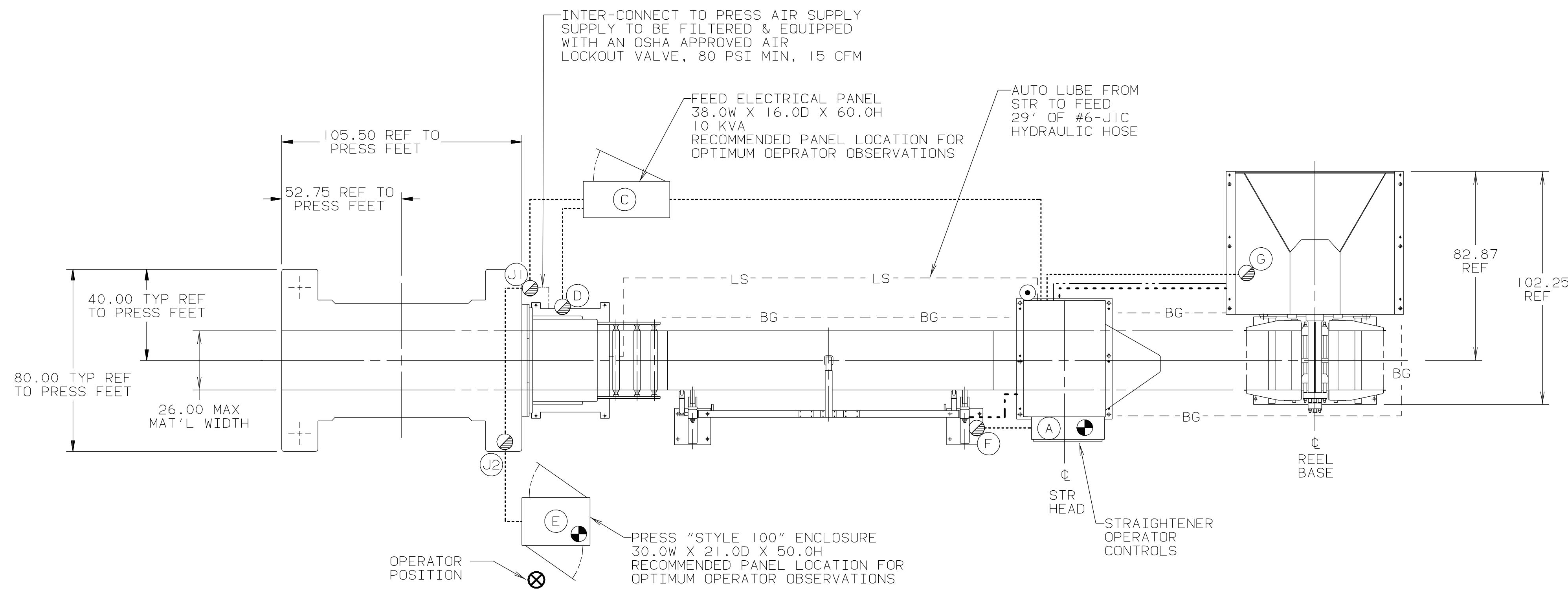


ITEM	DESCRIPTION	MODEL NUMBER	SERIAL NUMBER	REMARKS	ITEM	DESCRIPTION	MODEL NUMBER	SERIAL NUMBER	REMARKS
1	MINSTER "PIECE-MAKER" PRESS	P2-200-72	29121		4	MINSTER MACHINE STRAIGHTENER	MSH30-26-7	13-50393	PEELER TABLE, CLASS "A" LUBE SYS, CLASS 'A' LUBE TO FEED, DRN HOLD-DOWN ARM WITH END FLATTENER
2	MINSTER MACHINE SINGLE ROLL ELECTRIC FEED	MEF5-26	18-50671	CHROME BLAST ROLL FINISH, END OF STK DET, LUBE FROM STR & OMNILINK 5000 OPERATOR INTERFACE TERMINAL	5	MINSTER MACHINE SINGLE REEL	MR15-26S	13-70453	JOG DRIVE, HOLDING BRAKE & KEEPER ARMS
3	MINSTER MACHINE THREADING TABLE	MTT12-26S	13-81148						

ITEM	DESCRIPTION	REV'D.



- NOTES:
- ITEMS TO BE SUPPLIED BY USER:
TUBE FOR INTERCONNECTIONS, PIPE, HOSES, CONDUIT & WIRE.
- ELECTRICAL APPROXIMATIONS ARE AS FOLLOWS:
- A-C-J1 STRAIGHTENER ELECTRICAL PANEL TO PRESS "STYLE 100" ENCLOSURE (CONNECTIONS BETWEEN J1-J2-E SUPPLIED BY MMCO-O)
 - A-F STRAIGHTENER ELECTRICAL PANEL TO THREADING TABLE ELECTRICAL TERMINAL BOX
 - A-G STRAIGHTENER ELECTRICAL PANEL TO REEL ELECTRICAL TERMINAL BOX
 - C-D FEED ELECTRICAL PANEL TO FEED ELECTRICAL TERMINAL BOX
- INDICATES ELECTRICAL SUPPLY LINES
 - INDICATES PNEUMATIC SUPPLY LINES
 - INDICATES HYDRAULIC SUPPLY LINES
 - BG- INDICATES BARRIER GUARDING PER ANSI B11.18 TO BE SUPPLIED BY USER
 - LS-- INDICATES LUBE SUPPLY LINES, SUPPLIED BY MMCO-B, INSTALLED BY USER
- ⊖ INDICATES ELECTRICAL DROP 480V-3Ø-60HZ
 - ⊙ INDICATES PNEUMATIC DROP 80 PSI, 4 CFM
 - ⊗ INDICATES OPERATOR
 - ⊕ INDICATES ELECTRICAL TERMINAL BOX
- FOUNDATION ENGINEERING IS RESPONSIBILITY OF USER

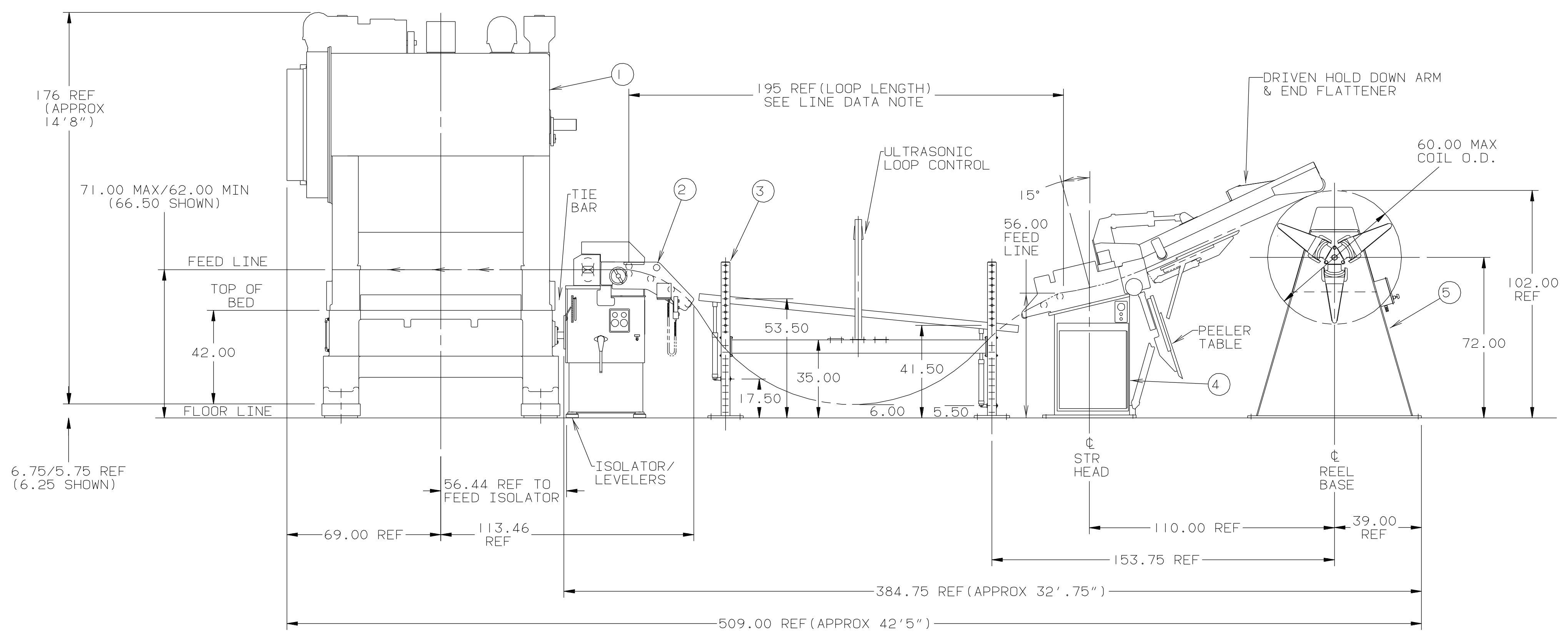
FEED LINE EQUIPMENT DATA

LINE DIRECTION: RIGHT-LEFT
 STROKES PER MINUTE (PRESS): 0-120
 LINE SPEED (I.P.M): 40-1200
 MAX STOCK WIDTH: 26"
 MIN STOCK THICKNESS: .020"
 MAX STOCK THICKNESS @ FULL WIDTH: .125" (FEED)
 MAX STOCK THICKNESS: .250" (FEED)
 MAX STOCK WIDTH @ FULL THICKNESS: 16" (FEED)
 MAX COIL WEIGHT: 15,000 LBS
 COIL I.D. RANGE: 20-24"

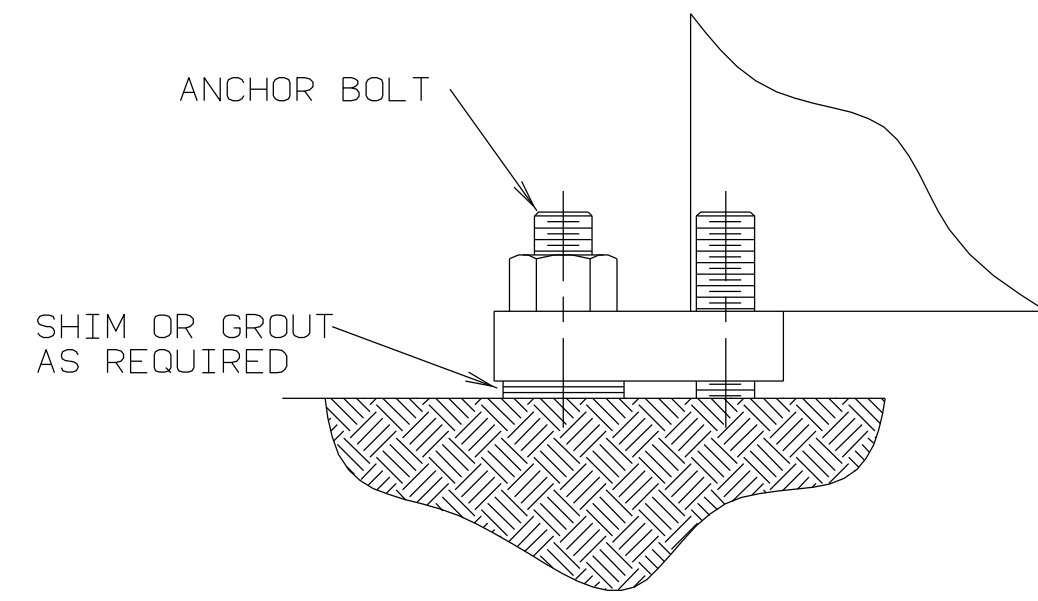
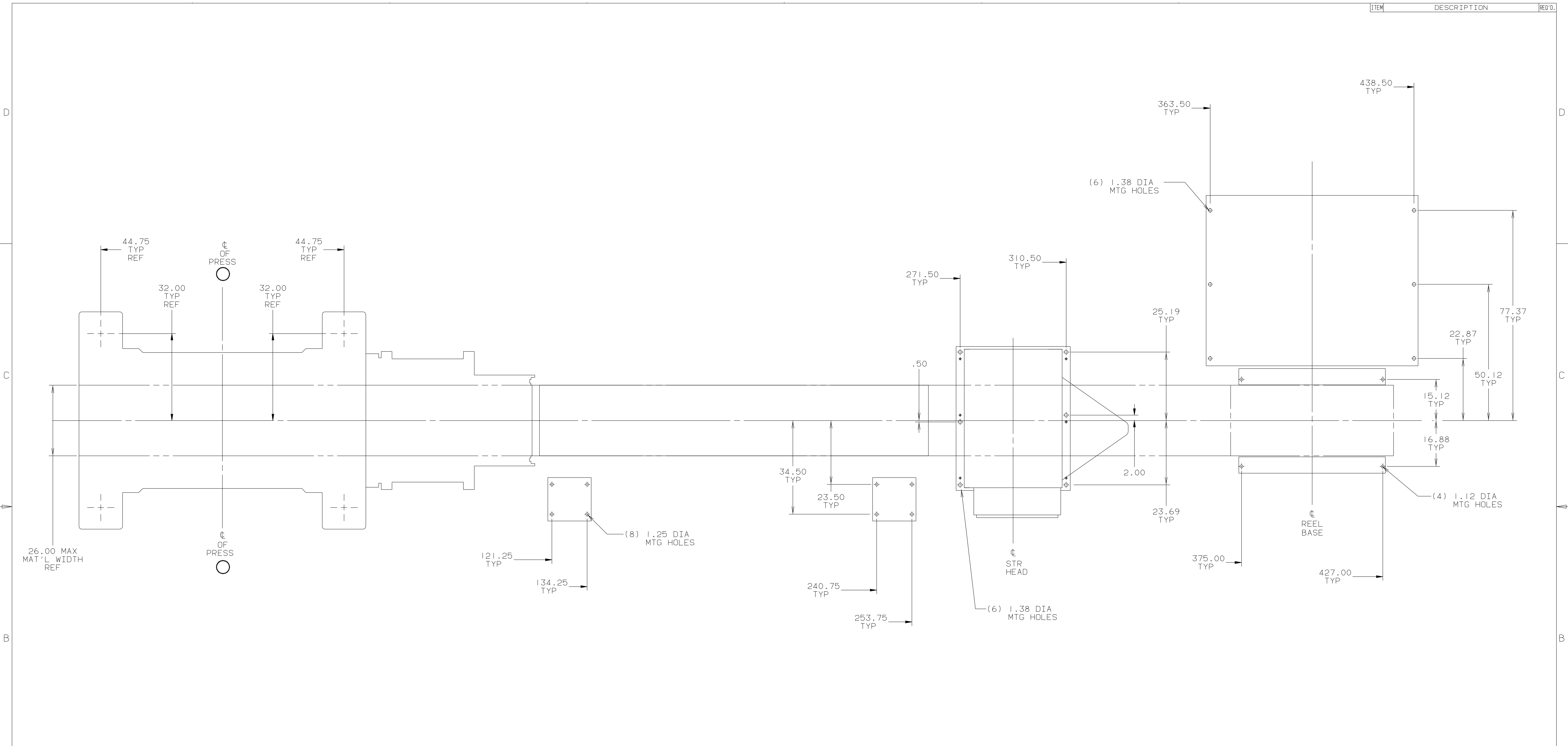
LINE DATA

LOOP STORAGE AVAILABLE OF APPROX. 39" IS BASED ON MAX. MAT'L THICKNESS OF .188" WITH A RECOMMENDED MAX. FEED PROGRESSION OF APPROX. 15"

NOTE: ALL LINE DATA IS CALCULATED FOR MILD STEEL



EST WEIGHT	RAW MATERIAL WEIGHT	UNLESS OTHERWISE SPECIFIED	THE MINSTER MACHINE CO.	LAST REV. DATE
		DIMENSION TOLERANCE	BEAUFORT, SOUTH CAROLINA	000
GROUP TECH NO		X AND X.X 0.100		CHANGED BY
REFERENCE NO		X.XX 0.010		
1204-171		X.XXX 0.001		
SUPERSEDED BY		X.XXXX 0.0005		
		FINISH 125 MICRONS	DATE	SCALE
		BREAK SHARP CORNERS 0.03	11-15-96	IDS
			DRAWN BY	IDS
			CHECKED BY	.031
			NAME OF PART	
			L/O, FLOOR PLAN	
			OMEGA MOTION INC.	
PATTERN FILE NO			MATERIAL	PART NO
				SHEET 1 OF 2
PATTERN BASIC NO			NO	REV'D
			D	PART NO 1193-884



LEVELING & ANCHORING DETAIL
 AFTER MACHINE HAS BEEN LEVELED, SHIM OR GROUT UNDER THE FOOT AT THE ANCHOR LOCATION AS SHOWN

ANCHORING SPECIFICATIONS FOR MATERIAL HANDLING EQUIPMENT

ANCHOR HOLE	ANCHOR SIZE	MINIMUM ULTIMATE PULLOUT
0.625	0.500	7,000 LBS
0.750	0.625	9,000 LBS
0.875	0.750	12,000 LBS
1.00	0.875	18,000 LBS
1.125-1.250	1.00	20,000 LBS
1.375-1.500	1.25	27,000 LBS

NOTE: IT IS THE CUSTOMERS RESPONSIBILITY TO FURNISH ADEQUATE FOUNDATION AND HARDWARE TO ANCHOR EQUIPMENT TO THE ABOVE SPECIFICATIONS. ABOVE SPECIFICATIONS ARE FOR MATERIAL HANDLING EQUIPMENT.
 FOR SPECIFICATIONS ON MOUNTING PRESSES REFER TO MINSTER PRESS INFORMATION.

EST. WEIGHT	RAW MATERIAL WEIGHT	UNLESS OTHERWISE SPECIFIED	THE MINSTER MACHINE CO.	LAST REV. DATE
GROUP TECH NO	DIMENSION TOLERANCE	X AND X.X	BEAUFORT, SOUTH CAROLINA	REV LEVEL
REFERENCE NO	X.XX	0.100	000	CHANGED BY
1204-171	X.XXX	0.010	© 1996 THE MINSTER MACHINE COMPANY. THIS DOCUMENT IS THE EXCLUSIVE PROPERTY OF THE MINSTER MACHINE COMPANY. ANY DISCLOSURE, DISTRIBUTION AND/OR REPRODUCTION WITHOUT THE EXPRESS WRITTEN CONSENT OF THE MINSTER MACHINE COMPANY IS PROHIBITED. ALL RIGHTS RESERVED.	
SUPERSEDED BY	X.XXXX	0.0005	DATE	DRAWN BY
SUPERSEDES	FINISH 125 MICRONS	11-15-96	IDS	IDS
PATTERN FILE NO	BREAK SHARP CORNERS 0.03	SCALE	NAME OF PART	
PATTERN BASIC NO		.062	L/O, FLOOR PLAN	
			OMEGA MOTION CO.	
			MATERIAL	PART NO
				SHEET 2 OF 2
			NO. REV'D	PART NO
			D	1193-884