



## MODEL AB250-12 PRESS BRAKE

TONNAGE FORMING/PUNCHING	250 / 175
DISTANCE BETWEEN HOUSINGS	10'-5"
BED/RAM LENGTH	12'
BELOW GRADE	no
WEIGHT ( <i>LBS.</i> )	34,000
TOP BED HEIGHT	38"
BED WIDTH	8"
THROAT DEPTH	10"
RAM STROKE ( <i>FULLY ADJUSTABLE</i> )	8"
OPEN HEIGHT	16"
CLOSED HEIGHT	8"
HORSEPOWER	20
RAM SPEEDS ( <i>IN INCHES PER MINUTE</i> )	
APPROACH	102
PRESS	16
RETURN	132

**AB250-12 w/ features listed above for \$111,500.00**

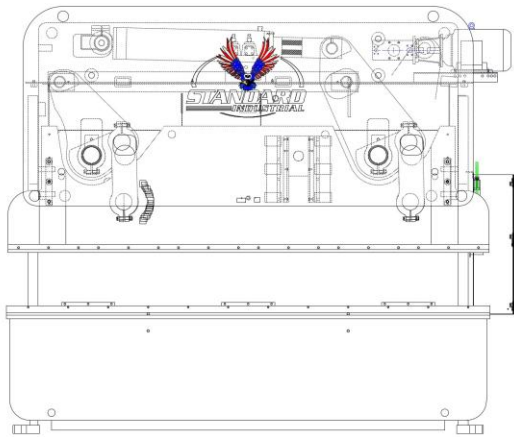
(fob Clarksdale, MS)

MADE IN THE U.S.A

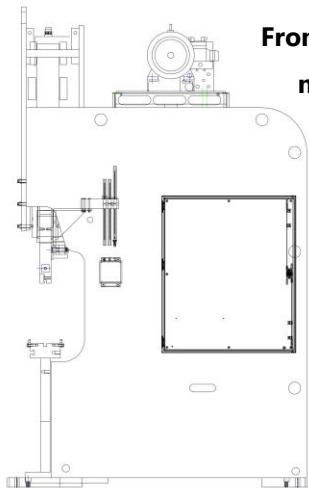


## Standard Features:

- ★ 100% Owned, 100% Operated & 100% Manufactured in U.S.A.
- ★ Off the shelf, non-proprietary parts from your local suppliers across all of North America
- ★ Complete parts manual listing all original manufacturer's name and part numbers so you will never have trouble locating parts
- ★ Groove in bed and ram clamps for American Style Tooling (*European optional*)
- ★ Three sets of extremely heavy duty gibbing for precision ram guidance
- ★ Hydraulic pressure tonnage control
- ★ Readily available service technicians across the U.S.A.
- ★ Perfect for precision full length forming + off-center loading applications
- ★ Continuous tonnage the full length of the bed due to hydra-mechanical drive
- ★ Simple mechanical limit switches control open height, speed change point and lower limit/angle of the bend (*Upgradable to 10+ axis of CNC gauging*)
- ★ Counterbalance for punching applications for to up to 2/3 of total tonnage
- ★ UL508A compliant
- ★ +, - .001" ram Repeatability (*Upgradable to +, - .0004"*)
- ★ 5 Year Parts Warranty + 5 Year Limited Onsite Labor Warranty
- ★ Lifetime Telephone Support at No Charge
- ★ (2) 24" Work Support Arms that slide l-r in t-slot across front of bed
- ★ Manifold centralized lube system for easy maintenance
- ★ OSHA approved Hand/Foot sequence w/footswitch for single operator
- ★ T-slot across front edge of brake bed
- ★ Forty years of reliable service & steadfast support for every single customer

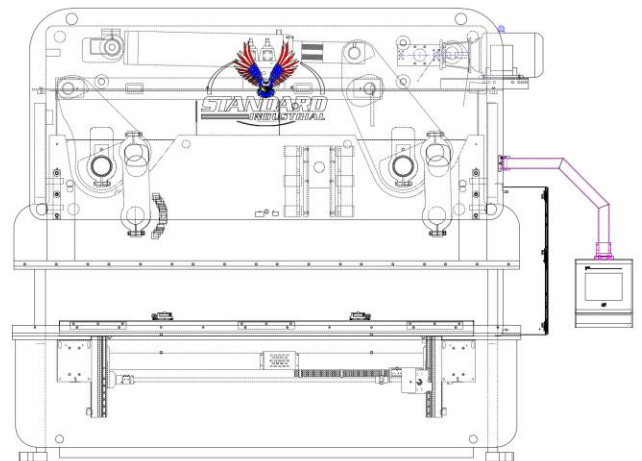


**Continuous full tonnage the entire length of bed via our simple, extremely heavy-duty, hydra-mechanical drive system**

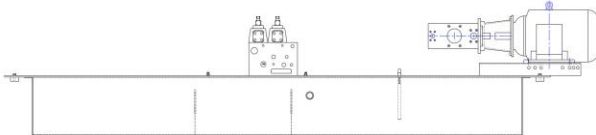


**From the base machine with (3) simple mechanical ram limit switches...**

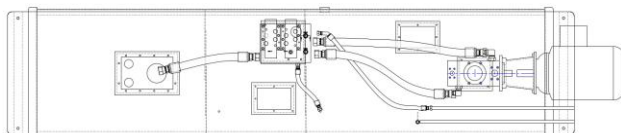
**... Up to state-of-the art 2D/3D CNC controls and up to 6 axis of servo gauging plus other CNC peripherals. Allowing you to customize your 100% U.S. manufactured machine to your exact requirements**



*Typical hydraulic system of base model AB press brake*



**The simplest hydraulic system available making maintenance and troubleshooting substantially easier than two cylinder machines.**



**All parts readily available everywhere, off the shelf across North America**

**BLANK PAGE**