



MODEL AS250-14 SHEAR

CAPACITY <i>(TO A36)</i>	½" x 14'
CAPACITY <i>(TO A572/STAINLESS STEEL)</i>	10 ga x 14'
SHEARING TONS AVAILABLE	36
RAKE <i>(IN INCHES PER FOOT)</i>	.250"
SHIPPING HEIGHT <i>(approx.)</i>	105"
WIDTH	200"
DEPTH <i>(w/36" backgauge)</i>	90"
TABLE HEIGHT	37"
NUMBER OF HOLD DOWN CYLINDERS	15
BORE OF HOLD DOWN CYLINDERS	2"
HOLD DOWN TONS OF FORCE	40
BLADE SIZE	1"x4"x172"
WEIGHT <i>(U.S. LBS.)</i>	36,000 lbs.
HORSEPOWER	25
STROKES PER MINUTE:	
FULL WIDTH CUT	12
12" WIDE CUT	40
BELOW GRADE	no

AS250-14 w/all features listed for \$133,500.00

(fob Clarksdale, MS)

All dimensions and weights subject to change

MADE IN THE U.S.A

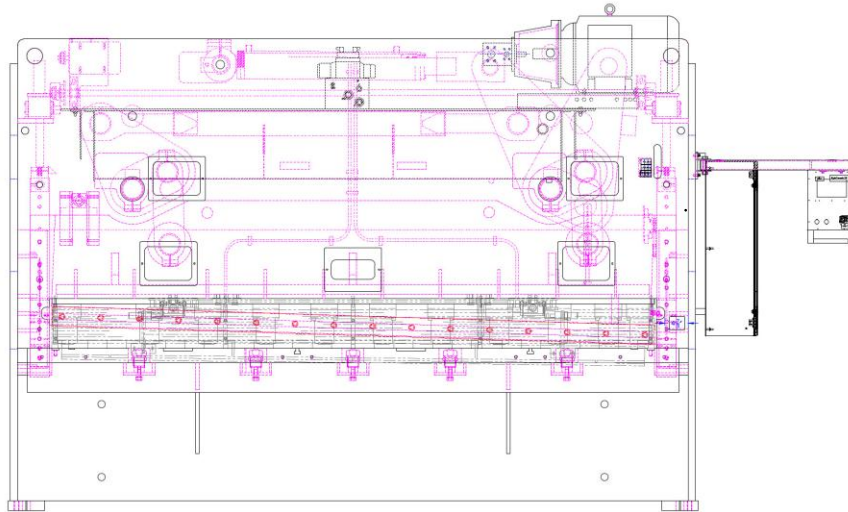


Features Include:

- ★ 100% Owned, 100% Operated & 100% Manufactured in U.S.A.
- ★ Off the shelf, non-proprietary parts from your local suppliers across all of North America
- ★ Complete parts manual listing all original manufacturer's name and part numbers so you will never have trouble locating parts
- ★ Precision Guillotine drive providing the best shearing system available
- ★ Highly visible, LED shadow lights for shearing line
- ★ Backgauge includes manual swing-away backstop (*Upgradeable to power*), + programmable X-retract + up to 200 programmable jobs via Cybelec control
- ★ Readily available service technicians across the U.S.A.
- ★ Power, quick-change blade gap adjustment that automatically sets desired material thickness
- ★ Continuous shearing tonnage full length of table due to hydra-mechanical drive system providing 80,000 PSI/44,000 Yield Capacity
- ★ Super heavy duty, 36" travel, precision ball screw backgauge with 400 IPM travel speed with +/- .005" repeatability.
- ★ Heavy duty ball transfers mounted in table for easier part handling
- ★ UL508A compliant
- ★ 5 Year Parts Warranty + 2 Year PLC + 5 Year Limited Onsite Labor Warranty
- ★ 4' squaring arm with scale (*2' off table*)
- ★ Lifetime Telephone Support at No Charge
- ★ (3) Hand slots + (2) T-slots in table
- ★ Manifold centralized lube system for easy maintenance
- ★ OSHA approved physical awareness barrier for operator protection
- ★ T-slot across front edge of brake bed
- ★ Forty years of reliable service & steadfast support for every single customer



- Automatic, quick change, power blade gap adjustment

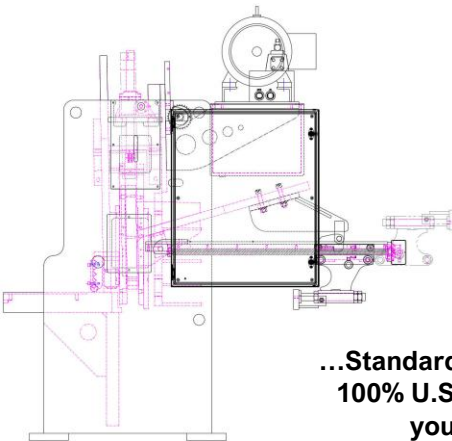


Cybtouch 8 Control

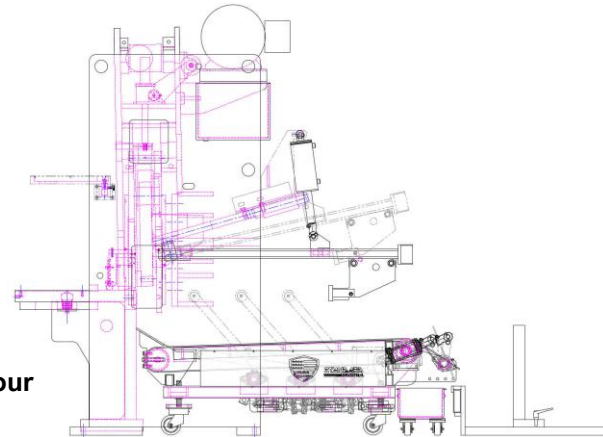


- 200 programmable jobs
- Programmable X retract
- Quick calibration
- Straightforward/easy to use
- Stroke length control
- Stroke counter and more
- Automatically sets desired material thickness

From the base machine to cover most customer's needs....

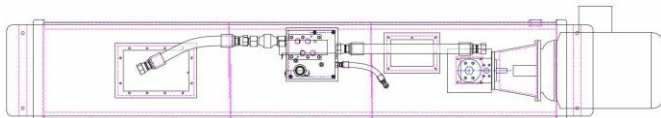


...To the latest in Automation that will substantially reduce inefficiencies in shearing applications....

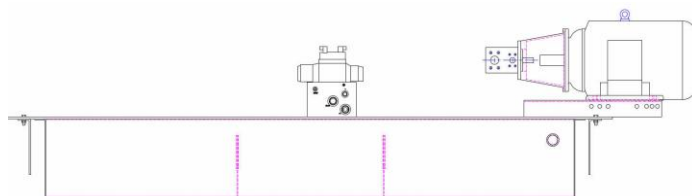


...Standard allows you to customize your 100% U.S. manufactured machine to your exact requirements

Typical hydraulic system of base model AS shear



The simplest hydraulic system available making maintenance and troubleshooting substantially easier.

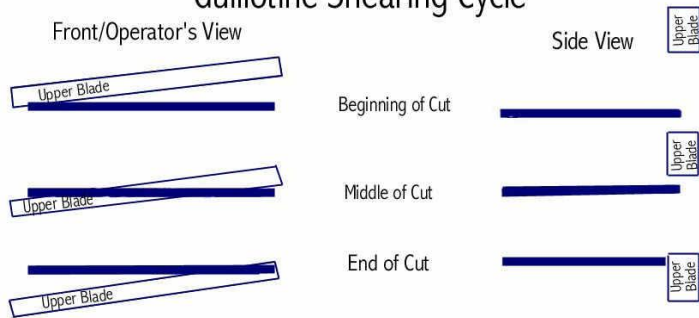


All parts readily available everywhere, off the shelf across North America.



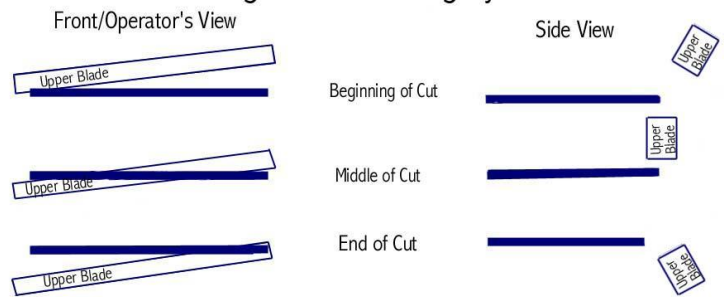
Guillotine VS. Swingbeam/Rocker Arm Comparison

Guillotine Shearing Cycle



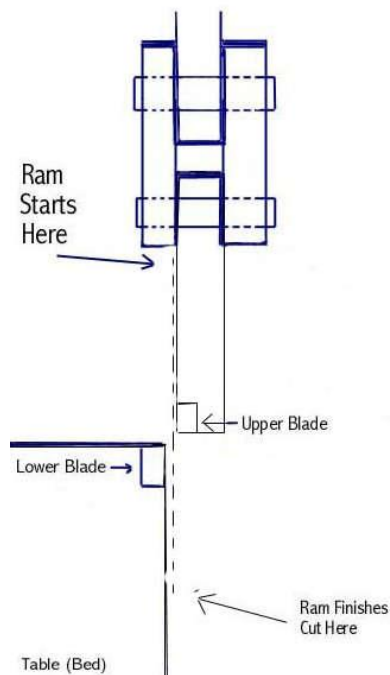
The relationship of the blade to workpiece NEVER changes

Swingbeam Shearing Cycle



The relationship of the blade to workpiece CONSTANTLY changes

Guillotine Straight Line Cutting Action



Swing-Beam/Rocker Arm "Arc" Cutting Action

