



MODEL AS250-12 SHEAR

| | |
|------------------------------------|-------------|
| CAPACITY (TO A36) | .250" x 12' |
| CAPACITY (TO A572/STAINLESS STEEL) | .135" X 12' |
| SHEARING TONS AVAILABLE | 36 |
| RAKE (IN INCHES PER FOOT) | .250" |
| SHIPPING HEIGHT | 90" |
| WIDTH | 174" |
| DEPTH | 90" |
| TABLE HEIGHT | 33" |
| NUMBER OF HOLD DOWN CYLINDERS | 13 |
| BORE OF HOLD DOWN CYLINDERS | 2" |
| HOLD DOWN TONS OF FORCE | 36 |
| BLADE SIZE | 1"x3"x148" |
| WEIGHT (U.S. LBS.) | 28,000 |
| HORSEPOWER | 25 |
| STROKES PER MINUTE: | |
| FULL WIDTH CUT | 14 |
| 12" WIDE CUT | 40 |
| BELOW GRADE | no |

AS250-12 w/features above for \$103,500.00

(fob Clarksdale, MS)

All dimensions and weights subject to change

MADE IN THE U.S.A



Features Include:

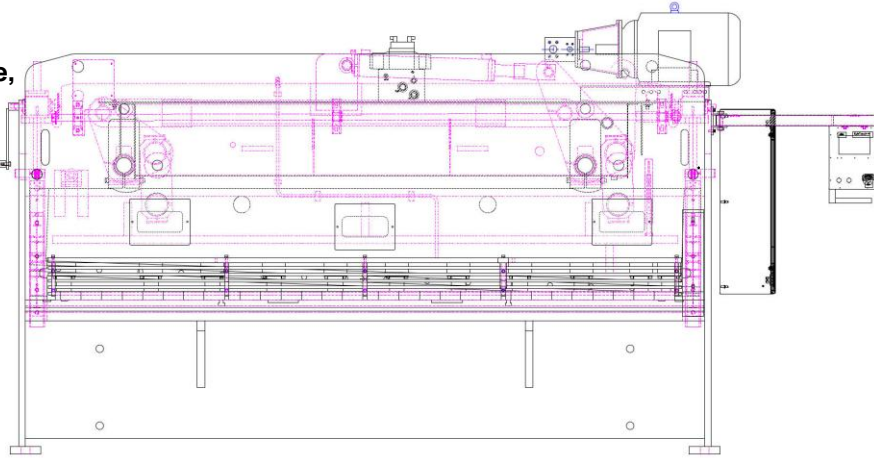
- ★ 100% Owned, 100% Operated & 100% Manufactured in U.S.A.
- ★ Off the shelf, non-proprietary parts from your local suppliers across all of North America
- ★ Complete parts manual listing all original manufacturer's name and part numbers so you will never have trouble locating parts
- ★ Precision Guillotine drive providing the best shearing system available
- ★ Highly visible, LED shadow lights for shearing line
- ★ Backgauge includes manual swing-away backstop (*Upgradeable to power*), + programmable X-retract + up to 200 programmable jobs via PLC control
- ★ Readily available service technicians across the U.S.A.
- ★ Manual, side adjustable, quick-change blade gap adjustment (*Upgradeable to Automatic power system*)
- ★ Continuous shearing tonnage full length of table due to hydra-mechanical drive system providing 80,000 PSI/44,000 Yield Capacity
- ★ Super heavy duty, 36" travel, precision ball screw backgauge with 400 IPM travel speed with +,- .005" repeatability.
- ★ Off the shelf Cybele shear control with 200 job programmability
- ★ UL508A compliant
- ★ 5 Year Parts Warranty + 2 Year PLC + 5 Year Limited Onsite Labor Warranty
- ★ 4' squaring arm with scale (*2' off table*)
- ★ Lifetime Telephone Support at No Charge
- ★ (3) Hand slots + (2) T-slots in table
- ★ Manifold centralized lube system for easy maintenance
- ★ OSHA approved physical awareness barrier for operator protection
- ★ T-slot across front edge of brake bed
- ★ Forty years of reliable service & steadfast support for every single customer

MADE IN THE U.S.A



Cybtouch 8 Control

- Simple, quick-change, manual blade gap adjustment (upgradeable to automatic)

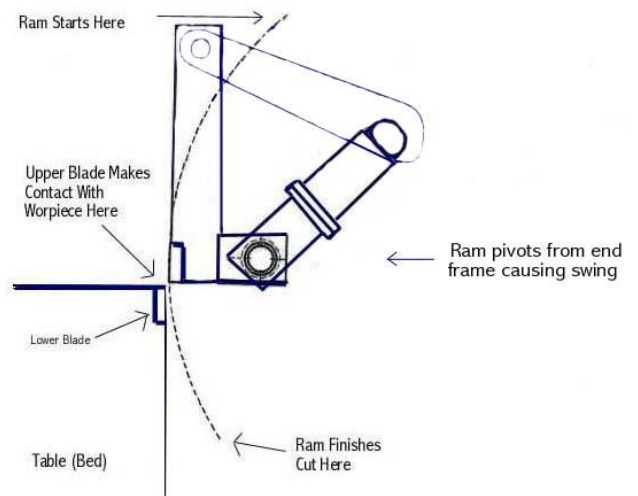
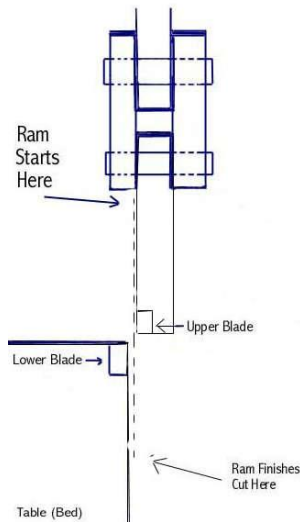


- 200 programmable jobs
- Programmable X retract
- Quick calibration
- Straightforward/easy to use
- Stroke length control
- Stroke counter and more

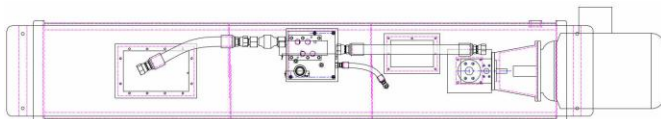
Guillotine Straight Line Cutting Action

VS

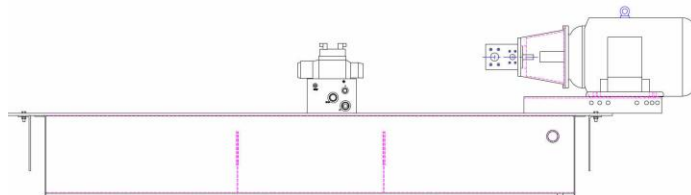
Swing-Beam/Rocker Arm "Arc" Cutting Action



Typical hydraulic system of base model AS shear



The simplest hydraulic system available making maintenance and troubleshooting substantially easier.



All parts readily available everywhere, off the shelf across North America