

MARATHON MACHINE TOOLS INC.

BARUFFALDI USA DIVISION

5515-B FM 1960 EAST

HUMBLE, TX 77346

PH: 281-812-2324

www.marathon-excel.com

March 23, 2011



**HEAVY DUTY DOUBLE CARRIAGE
TURRET LATHE**

Corry Forge Company

Daniel J. Fay

Production Manager

Corry, PA

Subject: Vantage PB-50-5A/T12-140" W&S style Turret Lathe with 12.5" Spindle Bore and 160" bed length

Dear Mr. Fay:

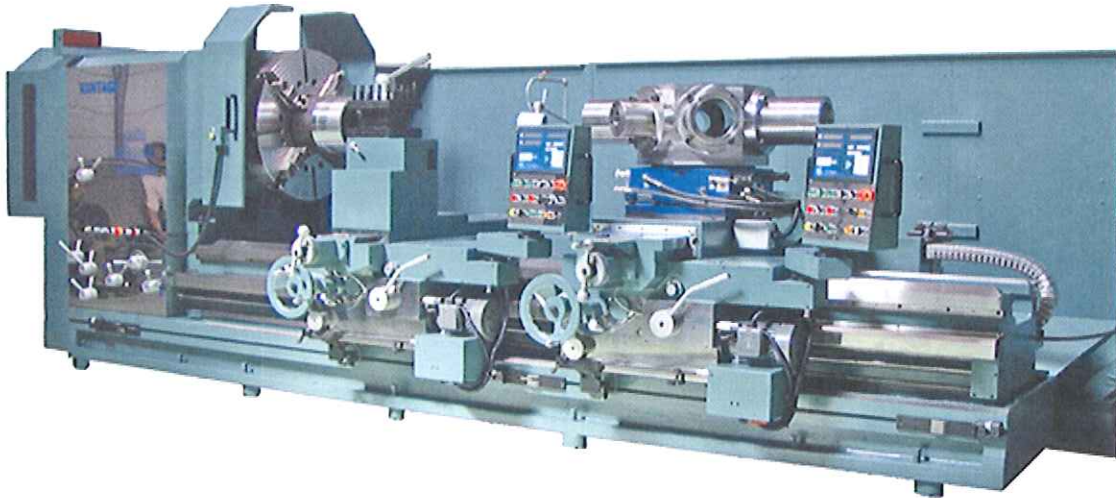
Thank you for your interest in our quality machine tools. According to your inquiry we are pleased to submit below proposal for your kind consideration for the following equipment:

One (1) **VANTAGE** Manual turret lathe with two carriages, rear hex turret and 12.5" spindle bore and 140" center distance

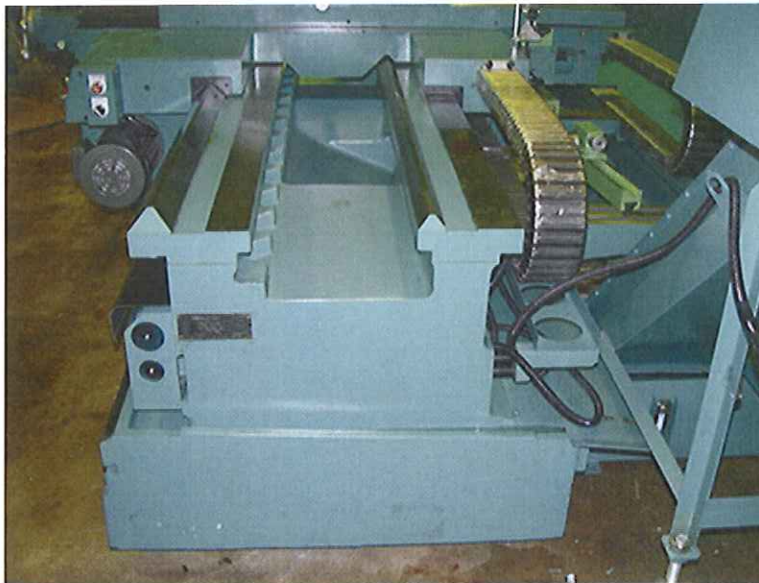
FEATURES:

- The Vantage heavy-duty lathes were designed to provide optimum performance with high cutting power and versatility for use in the most demanding applications
- Designed for easy operation and built to high accuracy standards
- Single piece bed casting resting entirely on the floor for maximum rigidity
- All gears and shafts are made of Cr-Ni steel, hardened and ground
- 4-speed Yaskawa variable spindle speed drive with pneumatic gear changer
- Spindle with electric brake

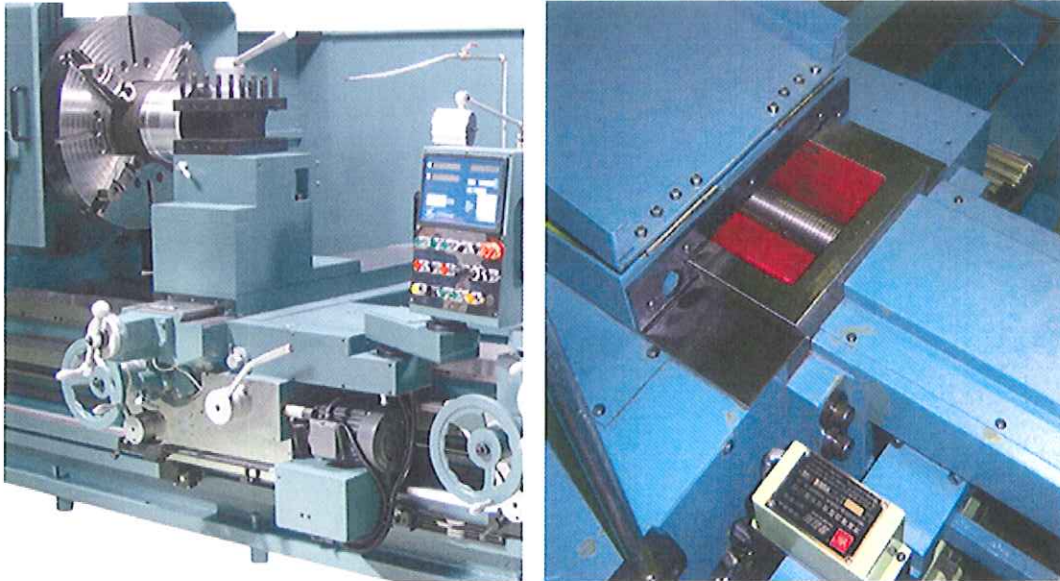
MACHINE AND EQUIPMENT



Massive cast iron bed with two V-way design preventing “fish tailing” of carriages



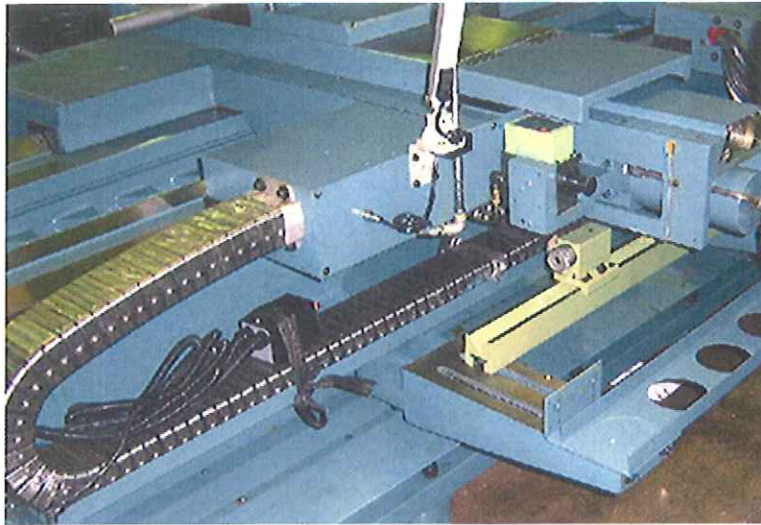
Wide spread front carriage with large 4-way tool post and oversized lead screw



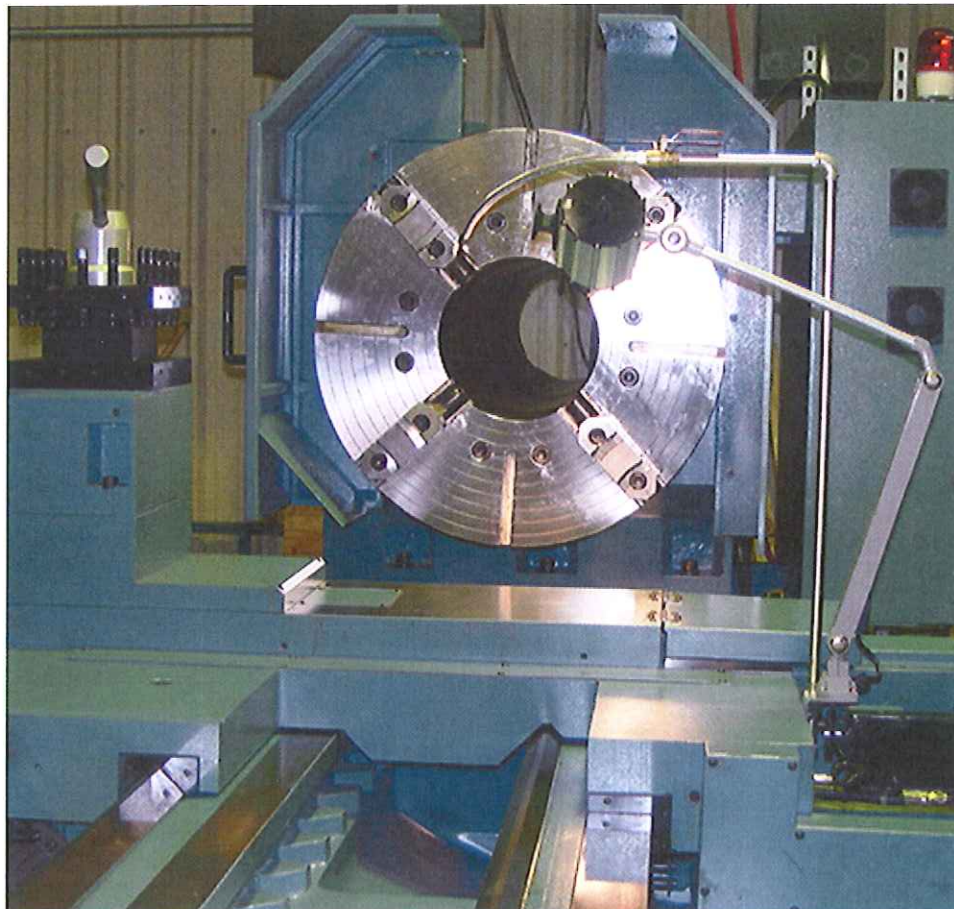
Rear carriage with large hex boring turret with a 10" high body, 20" across flats and thru boring bar stations for long bars, hydraulic indexing and clamping.



Two hydraulic taper turning attachments, one for each carriage (option)



Robust headstock with 28" steel body 4-jaw manual chuck



Heavy Duty PB series

ITEM / MODEL				PB-45		PB-50		PB-60		PB-70	
				mm	inch	mm	inch	mm	inch	mm	inch
CAPACITY											
Center height				505	22.5	638	25	764	30	895	35
Swing over bed				1010	45	1275	50	1527	60	1790	70
Swing over cross slide				686	32	950	37	1201	47	1460	57
Swing over gap				1524	65	1790	70	2040	80	2300	90
Gap width from headstock				600mm (24")							
Distance between chuck face and rear turret face	mm			1500,2000,2500,3000,3500,4000,5000,6000,7000,8000,9000,10000,11000,12000							
	inch			60,80,100,115,140,160,200,240,280,320,360,400,440,480							
Bed width	mm			712 (w/o Auxiliary guide), 812 (w/ Auxiliary guide)							
	inch			28 (w/o Auxiliary guide), 32 (w/ Auxiliary guide)							
HEADSTOCK											
Spindle nose				A2-11	A2-15	A2-20	A2-20	A2-20	A2-28	A2-28	A2-32
Spindle bore	mm			153	230	255	318	360	410	535	635
	inch			6.02	9.05	10.03	12.51	14.17	16.14	18	25.0
Spindle step				Auto 4 steps (with inverter)							
Spindle taper				1/20							
Gear transmission				4 - Step							
Spindle speed	1st range rpm			18-130,16-120,13-95,12-85,10-75,8-50,6-40,4-25							
	2nd range rpm			35-260,30-200,25-185,23-170,20-150,15-100,12-80,8-50							
	3rd range rpm			85-550,70-420,60-400,55-300,50-250,35-20,30-180,20-140,							
	4th range rpm			165-1000,150-700,120-600,110-400,95-350,65-300,50-250,40-220							
MOTOR											
Main spindle motor	KW (HP)			22.5(30)-STD. 30(40)/37(50)-OPT.							
FRONT CARRIGE with 4-way Tool Post											
Cross slide travel in X				31.5"							
Carriage travel in Z				120"							
Carriage spread on bed ways				35-1/4"							
Tool post size				8" x 8" square							
Swivel angle				± 45° (8 pos)							
REAR CARRIAGE with Hex Boring Turret											
Cross slide travel in X				31.5"							
Carriage travel in Z				144"							
Number of turret stations				6							
Maximum boring bar diameter				6"							
Turret head size between flats				20"							
Turret head height				10"							
Turret indexing				Bi-directional, hydraulic							
Diameter of lead screw				2"							

THREADS & FEEDS RNGE					
Longitudinal feeds mm/rpm(inch/rpm)		0.045-2.55 (0.0018-0.1)			
Cross feeds mm/rpm(inch/rpm)		0.023-1.28 (0.0009-0.05)			
Longit.rapid feeds mm/rpm(inch/rpm)		2000 (80)			
Cross rapid feeds mm/rpm(inch/rpm)		1000 (40)			
Metric thread mm (kinds)		1-56 (60)			
Inch thread TPI (kinds)		1/2-28 (60)			
Module thread MOD (kinds)		0.25-14 (60)			
Diametral pitch thread DP (kinds)		2-112 (60)			
Pitch of leadscrew mm(TPI)		12 (2)			
Machine weight kg (lb)	2000 mm (79") Center distance	13200(29040)	13600(29920)	14400(31680)	15200(33440)

Net Weight of PB-50-5A/T12-160 appr.**36,900 Lbs**



Variable speed spindle drive 4 step gear+infinite speed standard

STANDARD ACCESSORIES

- Hardened and ground bed and cross slide ways
- **Yaskawa** variable spindle speed drive, 4 speed ranges
- **Constant surface speed**
- One 28" steel body 4-jaw through hole chucks with 12.5" bore
- 4-way rapid traverses & power feed
- 8" x 8" 4-way tool post, 45° indexing increments
- 6-station rear boring turret with 6 boring bar holders (2", 4" 6" diam.)
- One manual steady rest 1" – 14" capacity, 3.15" diam. roller jaws
- Chuck guard-front and rear
- Automatic lubrication system with adjustable timer control
- Thread chasing dial
- Coolant system on each carriage
- Full length chip conveyor wit full length rear splash guard
- Halogen Work light
- Low voltage control
- Operator control panel on each slide, prepped for DRO

PB-50-5A PRICE FOB HOUSTON\$ 235,000.00

OPTIONAL ACCESSORIES

Special tall hard jaw set for chuck.....US\$ 4,800.00
NEWALL Digital read-out for one carriage (2-axis)US\$ 6,500.00 ea
Rear spindle adaptor for 2nd rear chuckUS\$ 3,500.00
Rear 28" manual 4-jaw steel body chuckUS\$ 7,800.00
Manual 3-jaw steady rest with 3" rollers and 14" – 32" capacityUS\$ 8,500.00

Machine made in Taiwan

Machine color: NAVY GRAY
Machine Power: 440V/3Ph/60Hz
Delivery: 4- 5 months from date of order and down payment
Terms: 30% down, balance due upon installation
Warranty: One-year parts & labor

If you have any questions, please do not hesitate to contact us. If you would like to see a machine similar in size in an end users shop, we can arrange that.

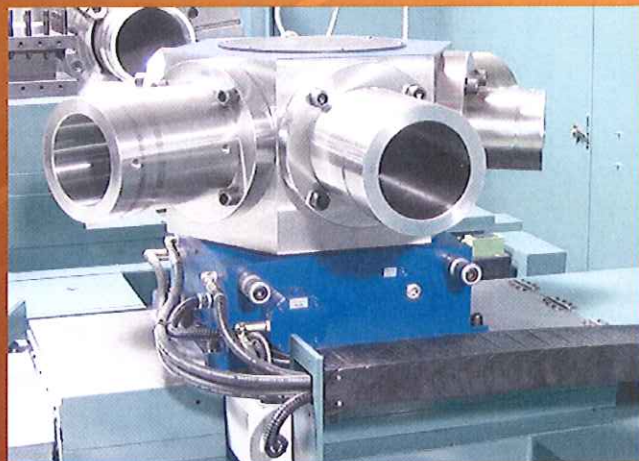
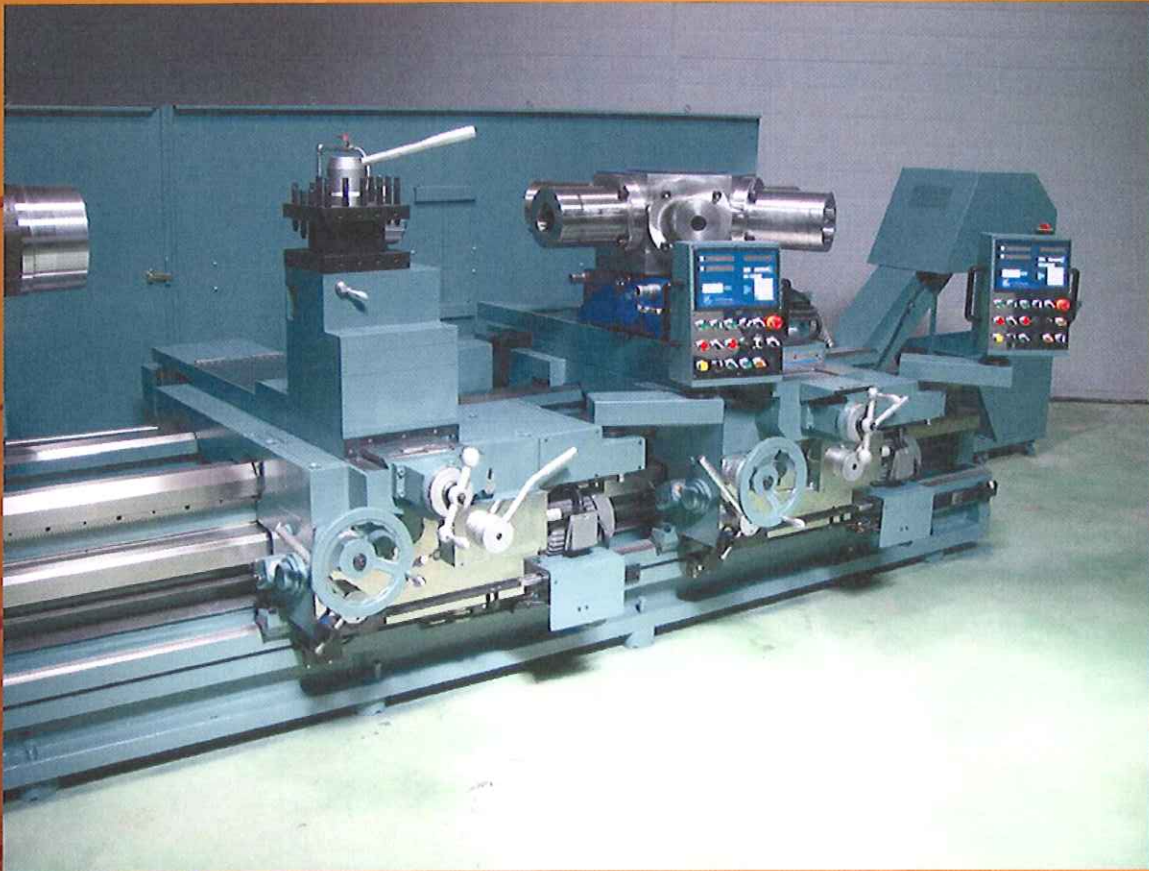
Respectfully yours,

Marathon Machine Tools, Inc.

**George T. Dabis
President**

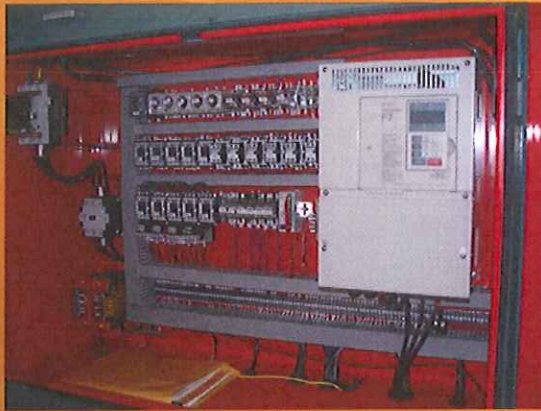
VANTAGE

PB-5A Double Carriage Turret Lathe
with rear cross sliding hex turret



The Only W&S Style Turret Lathe Today – Built in Taiwan

5A-Series Main Features



YASKAWA AC inverter for variable speed spindle drive providing constant surface speed capabilities



Robust headstock with Timken taper roller bearings and unique "goose neck" design



Large headstock with 4-jaw steel body front & rear chuck and spindle jog



Wide and robust front cross slide with 4-way rapid traverse & auto feed



Unique hydraulic taper turning attachment available for both carriages



Massive hydraulic cross sliding hex turret for long, up to 6" diam. boring bars thru the turret body and optional DRO

VANTAGE

Options



Manual steel body rear
4-jaw chuck



Hydraulic taper turning attachment
for either carriage



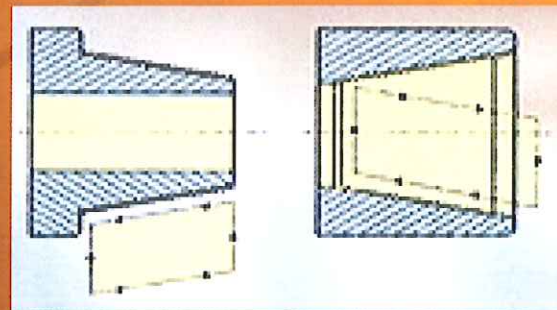
Chip conveyor
and chip cart



Full length splash guard,
only available with chip conveyor

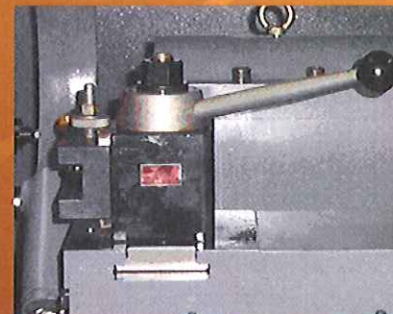


2-axis Digital Readout for
either carriage



Semi-auto turning and threading cycles

Aloris tool
post In lieu of
4-way tool
post



Specifications

ITEM / MODEL		PB-4A				PB-5A			
		mm	inch			mm	inch		
CAPACITY									
Center height		505	22.5			638	25		
Swing over bed		1010	45			1275	50		
Swing over cross slide		686	32			950	37		
Distance between chuck face and hex turret face									
	inch	120,140,160,180,200,240,280,320,360,400,440,480							
Bed width									
	inch	28 (w/o Auxiliary guide), 32 (w/ Auxiliary guide)							
HEADSTOCK									
Spindle nose			A2-15		A2-20		A2-20		A2-28
Spindle bore	mm		230		318		360		410
	inch		9.05		12.51		14.17		16.14
Spindle ranges		Auto 4 steps (with inverter)							
Spindle taper		1/20							
Gear transmission		4 - Step							
Spindle speed	1st range rpm	16-120,12-85,10-75,8-50							
	2nd range rpm	30-200,23-170,20-150,15-100							
	3rd range rpm	70-420,55-300,50-250,35-20							
	4th range rpm	150-700,110-400,95-350,65-300							
MOTOR									
Main spindle motor	KW (HP)	30(40)-STD., 37(50)-OPT.							
FRONT CARRIAGE with 4-way Tool Post									
Cross slide travel in X		31.5"							
Cross slide travel in Z		142"							
Compound slide travel		17.7"							
Carriage support surface on bed ways		35-1/4"							
Tool post size		8" x 8" square							
Swivel angle		± 45° (8 pos)							
REAR CARRIAGE with Hex Boring Turret									
Cross slide travel in X		31.5"							
Cross slide travel in Z		145"							
Number of turret stations		6							
Maximum boring bar diameter		6"							
Turret head size between flats		20"							
Turret head height		10"							
Turret indexing		Bi-directional, hydraulic							
Diameter of lead screw		2"							

Specifications are subject to change without notice.

Marathon Machine Tools, Inc.
 5515-B FM1960 East
 Humble, TX 77346
 Ph: 281-812-2324 Fx: 281-812-4160
marathon@marathon-excel.com
www.marathon-excel.com

