

## FIBER LASER CUTTING MACHINE

A6 plus Photo

Laser Power

12KW



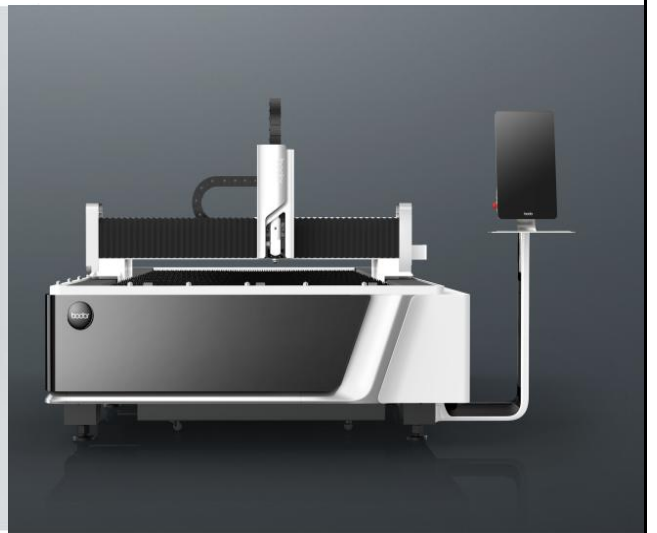
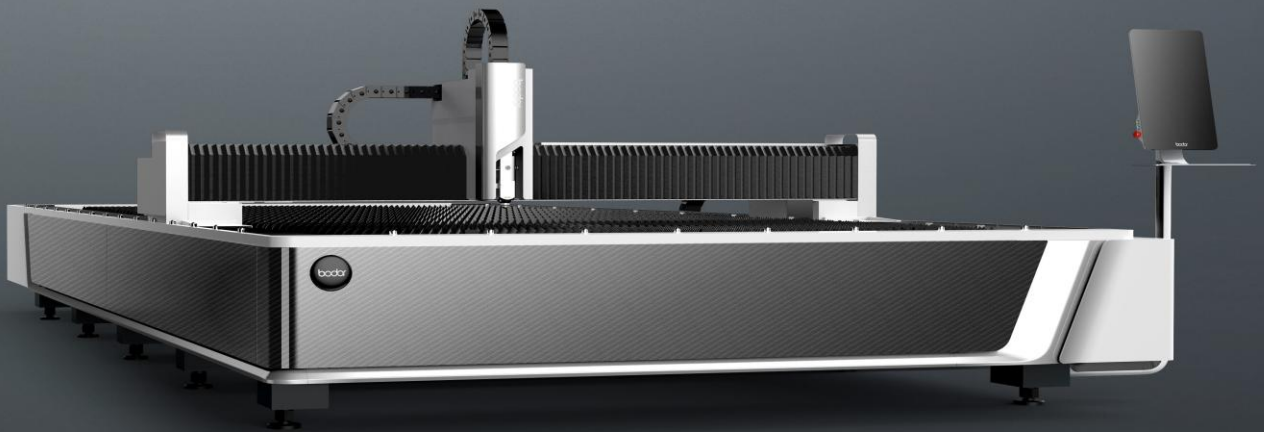
Centrifugal Fan	Included
Freight&Tariff	Included
Installation & Training Cost	Included
Spare laser headed	Included
Air Compressor	Included
Transportation	By Sea
explosion proof dust collector with spark trap	Included
consumable pack	Included
Loading Container	1*40'HQ
Payment Terms	50% down payment, 50% before shipment.
Warranty	Five years warranty for laser source and laser head Three years warranty for main parts One year free labor
<b>Basic Parameter</b>	
Working area	6100mm*2500mm
Max. linkage speed	100m/min (328ft/min)

Intelligent Function	
Bodor Lightning perforation technology	Yes
High Speed Cutting Expert Database	Yes
Remnant Typesetting	Yes
Automatic adjustment of cutting gas pressure	O2
Auto-focus of laser head	Yes
Laser cutting technology expert database	Yes
Ergonomic Remote Control (Bodor Mango®)	Yes
Active anti-collision function	Yes
Intelligent anti-shake of sheet edge	Yes
High quality Cutting Expert Database	Yes
Mineral casting anti burning	Yes
Gas-saving steady flow nozzle	Yes
Automatic lubrication	Yes
Intelligent maintenance reminder	Yes
WIFI internet connection	Yes
Bodor Cloud service	Yes
Performance	
Requirements for sheet	Plate thickness $\geq$ 0.8mm
Max. acceleration	1.5G
Table load bearing	12kW: 3595kg (30mm)
Machine overall dimensions	8188mm×3925mm×1890mm
Overall weight	3700kg
Positioning accuracy	$\pm$ 0.05mm/m
Repositioning accuracy	$\pm$ 0.03mm
Φ30mm roundness	$\leq$ 0.15mm
□30mm adjacent side dimension difference	$\leq$ 0.06mm
□190mm adjacent side dimension difference	$\leq$ 0.15mm
□190mm diagonal size difference	$\leq$ 0.20mm

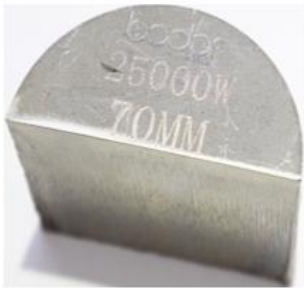
### Configuration

Laser source	Bodor Power
Laser head	BodorGenius
Machine bed	Mortise-and-tenon structure bed
Gantry structure	Stretched Aluminum gantry
Linear Rails	Bodor
Rack	Bodor
X-axis、Y-axis、Z-axis、A-axis Servo motor and driver	Bodor
Integral aluminum cantilever for high pressure steel mould casting	Yes
Control system	Bodor Thinker
Display size	21.5 inches
System identification file format	DXF、DWG、PLT、NC、G file
Intelligent alarm	Yes
Water Chiller	Yes
Power Requirements	220V/440V/480V 60HZ 3PHASE (Up to Clients Power Requirement)
Total power capacity/current with 3KW source (380V)	39.3KVA/59.6A

A6 plus Photo



## Cutting Samples



## Key Configuration Photos



**Mortise-and-tenon welding structure machine bed**



**Stretched Aluminum Gantry**



**21.5 inches Display**



**BodorPower Laser Source**



**BodorGenius Laser Cutting Head**



**BodorThinker Control System**



**Air Compressor (Optional)**



**Fume Filter (Optional)**

## Cutting Parameters

Power		Thickness (mm)	1	2	3(1/8")	4	5	6(1/4")	8	10	12(1/2")	14	16	18	20	25(1")	30	35	40	45	50(2")	60	70	80	90	100(4")	110
Carbon steel (Q235A) Q2	50kw	speed m/min	9-11	5-7.5	3.5-5.5	3.5-5	3.3-4.8	3-4.5	2.5-3.6	2.2-2.8	1.6-2.1	1.6-2.0	1.5-2.0	1.4-2.0	1.5-1.9	1.0-1.6	1.1-1.4	0.9-1.1	1.0-1.2	0.9-1.1	0.6-1.0	0.4-0.8	0.3-0.5	0.2-0.3	0.2-0.3	0.1-0.2	
	30kw		9-11	5-7.5	3.5-5.5	3.5-5	3.3-4.8	3-4.5	2.5-3.6	2.2-2.8	1.6-2.1	1.6-2.0	1.5-2.0	1.4-2.0	1.5-1.9	1.0-1.6	1.1-1.4	0.9-1.1	0.8-1.0	0.5-0.9	0.4-0.8	0.2-0.6	0.2-0.3	0.2-0.3	0.1-0.2		
	22kw		9-11	5-7.5	3.5-5.5	3.5-5	3.3-4.8	3.0-4.2	2.5-3.5	2.0-2.7	1.6-2.1	1.5-2.0	1.4-2.0	1.4-2.0	1.5-1.9	1.0-1.6	0.8-1.4	0.6-1	0.5-0.9	0.3-0.5	0.2-0.5	0.2-0.3	0.1-0.3				
	12kw		9-11	5-7.5	3.5-5.5	3.5-5	3.3-4.8	3.0-4.2	2.5-3.5	2.2-2.7	1.2-2.1	1.7-1.9	1.2-1.7	1.0-1.8	0.6-1.5	0.5-1.2	0.3-1.0	0.3-0.7	0.2-0.4	0.2-0.3	0.15-0.25						
	6000W		8-10	5-7.5	3.5-5	3.0-4.5	3.0-4.2	2.5-3.5	2.2-3.2	1.8-2.5	1.2-2.1	1.2-1.8	0.8-1.5	0.6-1.2	0.5-0.8	0.3-0.55	0.2-0.3										
	3000W		8.0-10	5.5-7.5	3.0-4.0	2.8-3.5	2.6-3.2	2.5-2.6	1.6-1.8	1.4-1.6	1.0-1.4	0.8-0.9	0.7-0.8	0.6-0.7	0.5-0.6												
Power	Thickness (mm)	1	2	3(1/8")	4	5	6(1/4")	8	10	12(1/2")	14	16	18	20	25(1")	30	35	40	45	50(2")	60	70	80	90	100(4")	110	
Stainless steel (201) #2	50kw	speed m/min	72-100	60-75	45-65	35-45	30-35	25-30	25-30	18-22	16-18	11-15	11-13	9-11	8-10	6-7	4-5	2.8-3.5	2-2.5	1-1.5	0.6-1	0.4-0.6	0.35-0.5	0.2-0.4	0.2-0.3	0.1-0.2	0.1-0.2
	30kw		72-100	50-75	38-55	30-40	25-32	20-29	15-20	12-17	9-14	7-11	5-9	3-6	3-7	2-4.5	1.5-3.2	1.0-1.5	0.8-1.7	0.6-1.0	0.25-0.5	0.2-0.3	0.17-0.3	0.15-0.3	0.1-0.2	0.07-0.1	0.07-0.1
	22kw		72-100	50-75	38-55	25-35	24-32	20-25	15-19	10-13.5	8.0-10	6.0-8.5	4.0-6.0	3.0-3.5	2.0-3.0	1.5-2.2	1.2-1.5	0.4-0.8	0.3-0.6	0.2-0.6	0.2-0.5	0.1-0.3	0.1-0.3	0.1-0.3	0.1-0.2		
	12kw		70-85	40-66	35-45	20-32	18-25	12-15	8-12	6.0-8.0	4.0-5.5	3.0-5.0	2.2-2.8	1.2-2.0	1.0-1.6	0.5-0.8	0.3-0.6	0.3-0.5	0.3-0.5	0.2-0.4	0.1-0.2						
	6000W		42-52	20-33	15-22	10-15	7.0-12	4.8-9.0	3.0-4.0	1.6-2.5	0.8-1.5	0.6-1.2	0.5-1.0	0.4-0.8	0.3-0.6	0.2-0.4											
	3000W		30-55	12-30	6.0-10.0	4.0-6.0	3.0-5.0	2.0-3.2	1.0-1.8	0.5-0.85	0.4-0.5																
Power	Thickness (mm)	1	2	3(1/8")	4	5	6(1/4")	8	10	12(1/2")	14	16	18	20	25(1")	30	35	40	45	50(2")	60	70	80	90	100(4")	110	
Aluminum #2	50kw	speed m/min	70-100	40-70	35-60	30-45	22-35	18-32	12-23	7-16	4.5-12	3-8	2.5-6	1.8-2.2	1.5-2	0.8-1.5	0.6-1.2	0.4-0.9	0.4-0.6	0.4-0.5	0.3-0.4	0.2-0.4	0.1-0.3	0.1-0.3	0.1-0.2	0.1-0.2	
	30kw		70-100	40-70	35-60	30-45	22-35	18-32	12-23	7-16	4.5-12	3-8	2.5-6	1.8-2.2	1.5-2	0.8-1.5	0.6-1.2	0.4-0.9	0.4-0.6	0.4-0.5	0.3-0.4	0.2-0.4	0.1-0.3	0.1-0.3	0.1-0.2	0.1-0.2	
	22kw		70-100	40-70	35-60	30-43	22-35	18-28	12-20	7.0-12.0	4.5-6.5	3.0-4.0	2.5-3.5	1.8-2.2	1.5-2.0	0.8-1.5	0.6-1.2	0.4-0.9	0.3-0.5	0.3-0.4	0.2-0.4	0.2-0.4	0.1-0.3				
	12kw		60-85	38-50	30-40	20-30	15-25	10-15	7.0-12	4.5-8.0	4.0-5.0	1.8-2.7	1.5-2.5	1.0-1.8	0.9-1.5	0.6-0.9	0.3-0.8	0.3-0.6	0.3-0.4	0.2-0.3	0.1-0.2						
	6000W		42-55	20-40	15-25	9.5-12	5.0-8.0	3.8-5.0	2.0-2.5	1.0-1.5	0.8-1.3	0.9-1.2	0.5-0.8	0.5-0.7	0.5-0.7	0.3-0.5											
	3000W		25-30	13-20	6.5-7.5	3.5-5.0	2.5-3.5	1.5-2.5	0.7-1.0																		
Power	Thickness (mm)	1	2	3(1/8")	4	5	6(1/4")	8	10	12(1/2")	14	16	18	20	25(1")	30	35	40	45	50(2")	60	70	80	90	100(4")	110	
Brass #2	50kw	speed m/min	65-75	40-60	30-45	25-38	22-31	15-25	12-18	8-14	5-10	4.5-8.5	4-6.5	3-5.5	2-4	1.5-3	1-1.5	0.5-1	0.5-0.8								
	30kw		65-75	40-60	30-45	25-38	22-31	15-25	12-18	8-14	5-10	4.5-8.5	4-6.5	3-5.5	2-4	1.5-3	1-1.5	0.5-1	0.5-0.8								
	22kw		65-75	40-60	25-40	20-35	20-28	12-20	9.0-12	6.0-10	3.0-4.5	1.8-4.0	1.5-3.0	1.0-2.5	0.4-2.0	0.3-0.5	0.2-0.4	0.1-0.2									
	12kw		55-65	38-42	18-30	15-20	10-15	6.0-8.0	5.0-7.0	4.5-6.0	2.4-4.0	0.8-1.5	0.6-1.2	0.4-0.6	0.3-0.5												
	6000W		35-45	20-30	12-18	8.0-12.0	6.0-8.0	3.0-6.5	1.6-2.2	0.8-1.2	0.3-0.5	0.3-0.5															
	3000W		20-30	6.0-10	3.0-8.0	2.5-4.0	1.5-2.0	1.0-1.8																			

## Packing Photos



Packing in Factory



In Container



In Container Yard

## ABOUT BODOR

A company of over 2,000 people only focusing on fiber laser cutting machines.

Local Sales & Engineer Service team in American.

Over 150 backbone researchers only into laser field.

Bodor Super Factory covers over 60,000 m<sup>2</sup>.

Exports of fiber laser cutting machine are No.1 in China.

Users of over 150 countries are happy with Bodor.

Bodor gains patents and certifications (CSA, cTUVus, CE, FDA, ISO 9001, BV, SGS, etc.)



Won the German IF Award at the International Industry Awards in 2019.  
Won the German Red Dot Award at the International Industry Awards in 2018.

Won the China Red Star Design Award, National High-tech Zone Gazelle Enterprise in 2016.

International awards 10+; industry awards 50+; patent certificates 130+.



**Leading Manufacturer**

**World Brand**

**Honors**



Bodor China



Bodor USA

