



## MODEL AB1000-24 PRESS BRAKE

TONNAGE FORMING/PUNCHING	1000/660
DISTANCE BETWEEN HOUSINGS	22'-5"
BELOW GRADE	yes
BED/RAM OVERALL LENGTH	24'
WEIGHT ( <i>APPROX. LBS.</i> )	230,000
BED WIDTH	14"
BED HEIGHT-This dim. is lowered with full machine pit	80"
OVERALL HEIGHT (approx. BEFORE going below grade)	240"
THROAT DEPTH	10"
RAM STROKE ( <i>FULLY ADJUSTABLE</i> )	12"
OPEN HEIGHT ( <i>MAXIMUM HEIGHT</i> )	24"
CLOSED HEIGHT ( <i>MINIMUM HEIGHT</i> )	12"
HORSEPOWER	100
RAM SPEEDS ( <i>IN INCHES PER MINUTE</i> )	
APPROACH	45
PRESS	17
RETURN	80

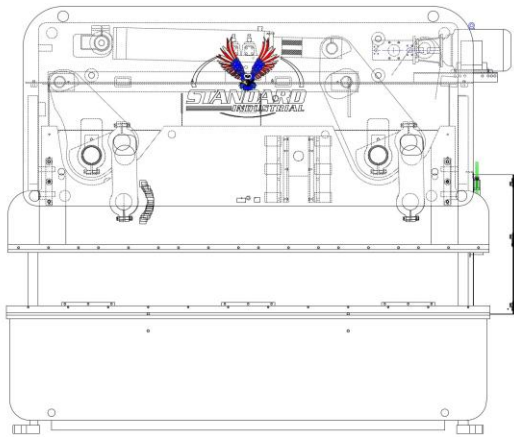
**AB1000-24 w/features above for \$745,900.00**

(fob Clarksdale, MS)

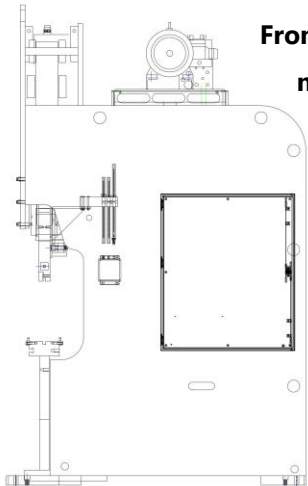


## Standard Features:

- ★ 100% Owned, 100% Operated & 100% Manufactured in U.S.A.
- ★ Off the shelf, non-proprietary parts from your local suppliers across all of North America
- ★ Complete parts manual listing all original manufacturer's name and part numbers so you will never have trouble locating parts
- ★ Groove in bed and ram clamps for American Style Tooling (*European optional*)
- ★ Three sets of extremely heavy duty gibbing for precision ram guidance
- ★ Hydraulic pressure tonnage control
- ★ Readily available service technicians across the U.S.A.
- ★ Perfect for precision full length forming + off-center loading applications
- ★ Continuous tonnage the full length of the bed due to hydra-mechanical drive
- ★ Simple mechanical limit switches control open height, speed change point and lower limit/angle of the bend (*Upgradable to 10+ axis of CNC gauging*)
- ★ Counterbalance for punching applications for to up to 2/3 of total tonnage
- ★ UL508A compliant
- ★ +, - .001" ram Repeatability (*Upgradable to +,- .0004"*)
- ★ 5 Year Parts Warranty + 5 Year Limited Onsite Labor Warranty
- ★ Lifetime Telephone Support at No Charge
- ★ (4) 24" Work Support Arms that slide l-r in t-slot across front of bed
- ★ Manifold centralized lube system for easy maintenance
- ★ Hand/Foot sequence w/Footswitch with (2) pedestal and (2) footswitch stations for up to 2 operators
- ★ T-slot across front edge of brake bed
- ★ Forty years of reliable service & steadfast support for every single customer

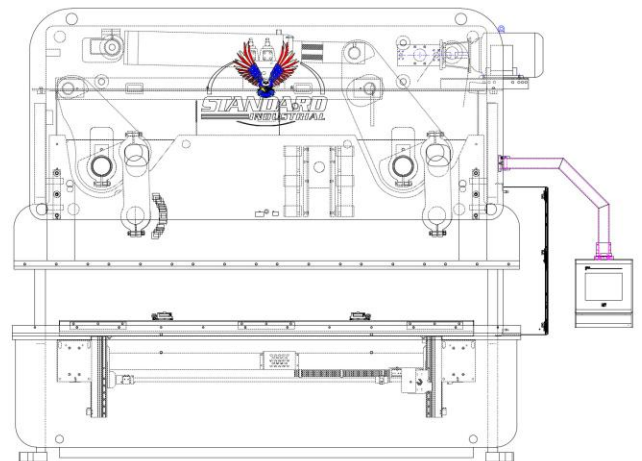


**Continuous full tonnage the entire length of bed via our simple, extremely heavy-duty, hydra-mechanical drive system**

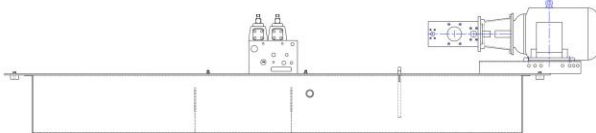


**From the base machine with (3) simple mechanical ram limit switches...**

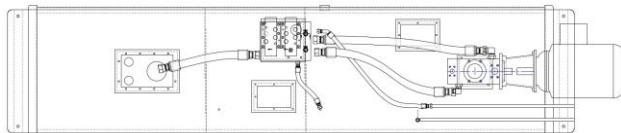
**... Up to state-of-the art 2D/3D CNC controls and up to 6 axis of servo gauging plus other CNC peripherals. Allowing you to customize your 100% U.S. manufactured machine to your exact requirements**



*Typical hydraulic system of base model AB press brake*



**The simplest hydraulic system available making maintenance and troubleshooting substantially easier than two cylinder machines.**



**All parts readily available everywhere, off the shelf across North America**

**BLANK PAGE**