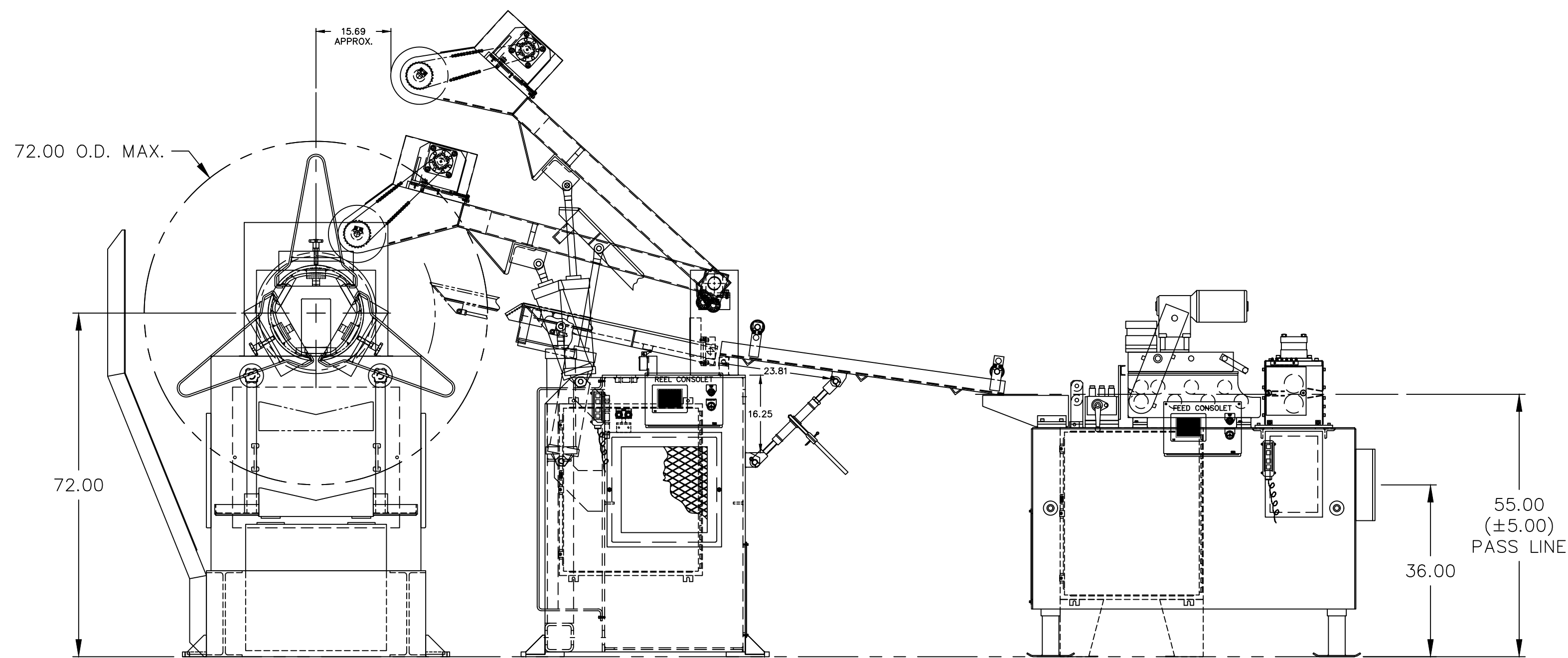
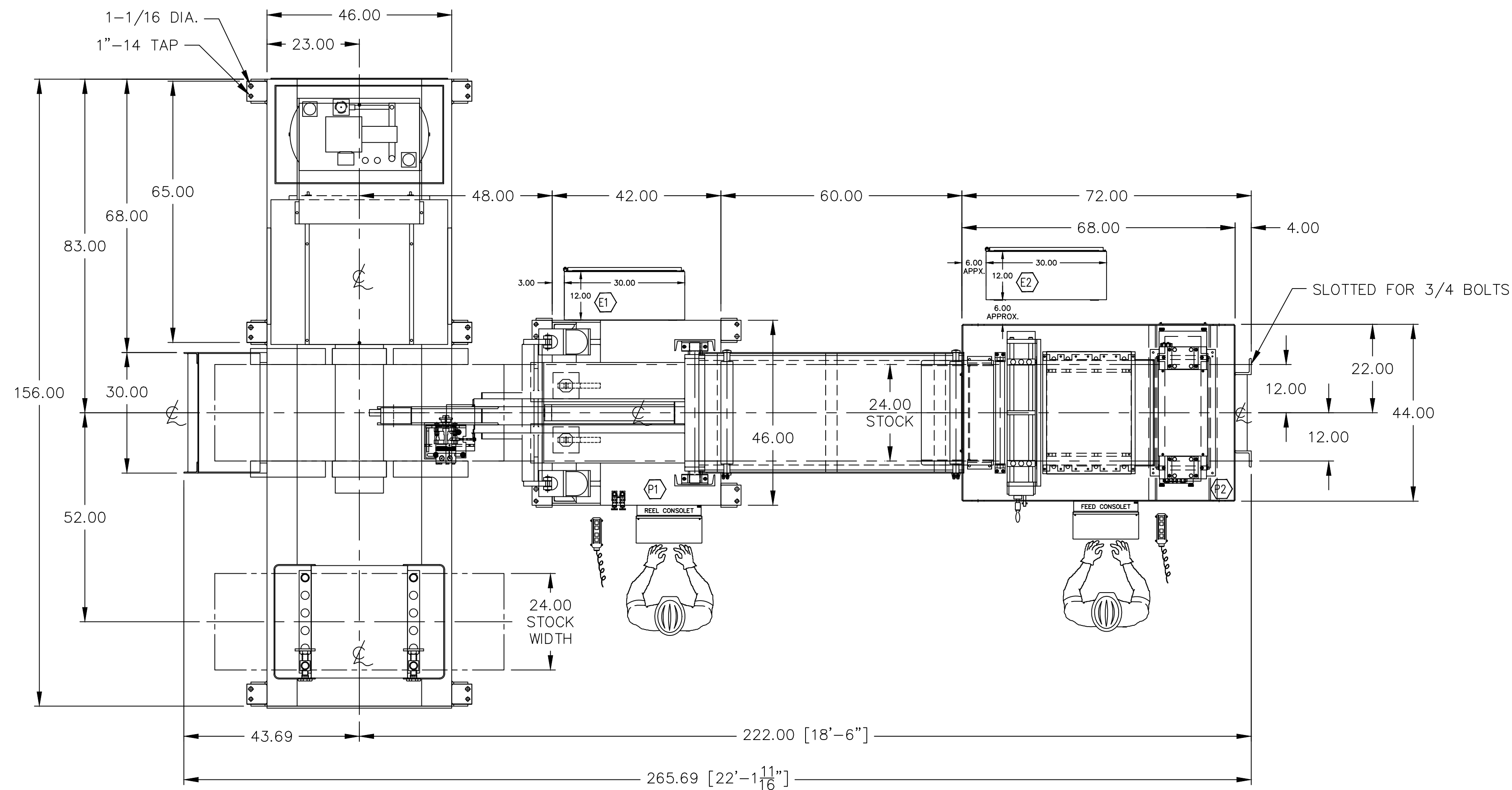


LOCATIONS SHOWN FOR AUXILIARY COMPONENTS ON THIS DRAWING ARE APPROXIMATE. LOCATIONS MAY VARY TO ACCOMMODATE BUILDING FEATURES OR APPLICABLE LOCAL CODES. EQUIPMENT MUST BE POSITIONED TO ALLOW NORMAL SERVICE. (RECOMMEND A MINIMUM OF 3 FEET AROUND COILRE MACHINE FOR OPERATOR CONVENIENCE AND FOR ROUTINE MAINTENANCE/SERVICE).



CENTERLINE OF UNCOILER, STRAIGHTENER ROLLS AND FEEDER ROLLS ARE TO BE PARALLEL TO EACH OTHER AND PERPENDICULAR TO THE CENTERLINE OF STOCK.
EQUIPMENT MUST BE POSITIONED TO ALLOW NORMAL SERVICE. (RECOMMEND A MINIMUM OF 3 FEET AROUND ENTIRE MACHINE FOR OPERATOR CONVENIENCE AND FOR ROUTINE MAINTENANCE/SERVICE).
CUSTOMER TO PROVIDE ADEQUATE SUPPORT UNDER ALL EQUIPMENT. A QUALITY NON-SHRINK GROUT/HARD PACK IS RECOMMENDED UNDER ALL SURFACE AREAS REQUIRING SUPPORT. (SEE DALLAS FORM NO. EN-1000-06).
CUSTOMER IS RESPONSIBLE FOR ALL ELECTRICAL & PNEUMATIC POWER CONNECTIONS TO EQUIPMENT.
DO NOT OPERATE EQUIPMENT PRIOR TO FILLING HYDRAULIC RESERVOIR WHEN APPLICABLE.
DO NOT OPERATE EQUIPMENT PRIOR TO PROPERLY SUPPORTING AND SECURING EQUIPMENT.

CHG. NO.	REVISION	DATE	BY

NOTES:
COIL WEIGHT MAX. = 10,000 LBS.
COIL WIDTH MAX. = 24"
COIL O.D. MAX. = 72"
COIL I.D. MIN. = 20"
COIL I.D. MAX. = 24"

RESTRICTOR:
COIL O.D. MIN. = 30"
COIL WIDTH MIN. = 9"

PEELER:
COIL O.D. MIN. = 50"

MATERIAL SPECIFICATIONS:
.160 X 24" MCRS
.250 X 10" MCRS

PLANT VOLTAGE:
460/3/60

FOR APPROVAL
BY 08/14/2006
APPROVED AS DRAWN
APPROVED AS NOTED

DATE ORDERED	DATE DUE
0	
JOB #	11609

R.K. INDUSTRIES, INC.

DIMENSIONAL TOLERANCES UNLESS OTHERWISE SPECIFIED XXX = ±.01 X.XXX = ±.005 FRACTIONAL = ±1/32 ANGULAR = ±1°	DO NOT SCALE DRAWING 3/4 ANGLE PROJECTION	DALLAS INDUSTRIES, INC. TROY, MICHIGAN	DATE 08-12-2006 SCALE 1/20 DRAWING NAME LAYOUT DRAWING DRAWING NO. 22492-22496	DETAILED BY BERNOR SHEET NO. 1 NO. OF SHEETS 1	CHECKED BY CEB	LAST REV. DATE	CHANGED BY
THIS DOCUMENT AND INFORMATION IT CONTAINS ARE THE EXCLUSIVE PROPERTY OF DALLAS INDUSTRIES, INC. ACCEPTANCE OF THIS DOCUMENT CONSTITUTES AN AGREEMENT OF CONFIDENTIALITY. THIS DRAWING AND INFORMATION IS NOT TO BE REPRODUCED, COPIED OR DISCLOSED IN ANY MANNER DETRIMENTAL TO DALLAS INDUSTRIES, INC. NOR IS THE INFORMATION TO BE MISUSED IN ANY WAY.			REV. LET.				