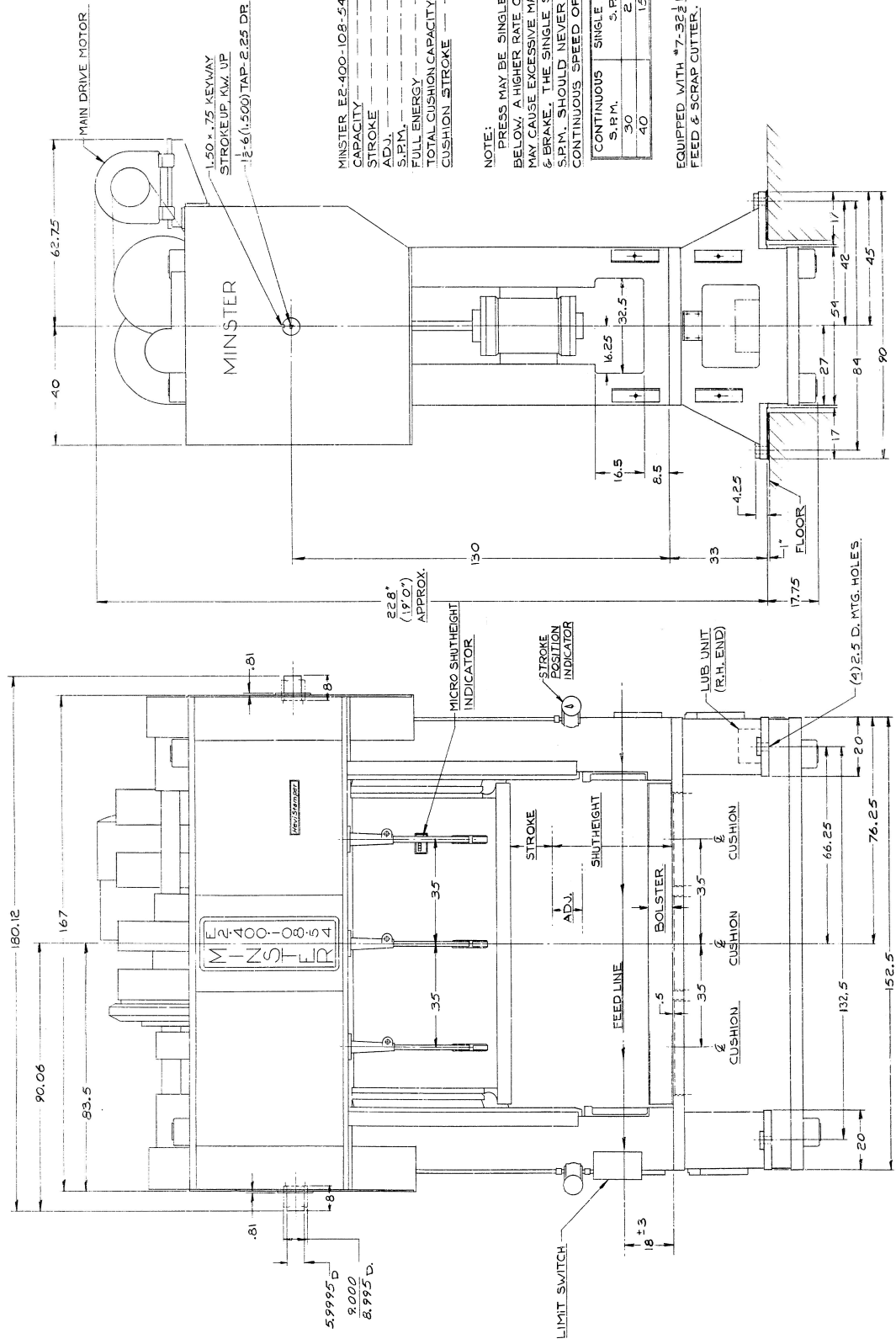


NO.	DESCRIPTION
1	
2	

MINSTER E-2-400-108-54
 V-1045-350



MINSTER E-2-400-108-54 PRESS
 CAPACITY ----- 400 TONS
 STROKE ----- 14 INS.
 ADJ. ----- 10 INS.
 S.P.M. ----- 20 TO 40
 FULL ENERGY ----- 28 S.P.M.
 TOTAL CUSHION CAPACITY-12 TONS @ 100 P.S.I.
 CUSHION STROKE ----- 7.5 INS.

NOTE:
 PRESS MAY BE SINGLE STROKE AS NOTED
 BELOW. A HIGHER RATE OF SINGLE STROKING
 MAY CAUSE EXCESSIVE MAINTENANCE OF CLUTCH
 & BRAKE. THE SINGLE STROKING SPEED IN
 S.P.M. SHOULD NEVER EXCEED 75% OF THE
 CONTINUOUS SPEED OF THE PRESS.

CONTINUOUS	SINGLE STROKE
S.P.M.	S.P.M.
30	21
40	15

EQUIPPED WITH #7-32 1/2 LITTELL DOUBLE ROLL
 FEED & SCRAP CUTTER.

THE MINSTER MACHINE CO. NUMBER
 12-27-66 VATERO 1085
 GENERAL ASSEMBLY
 V-1045-350