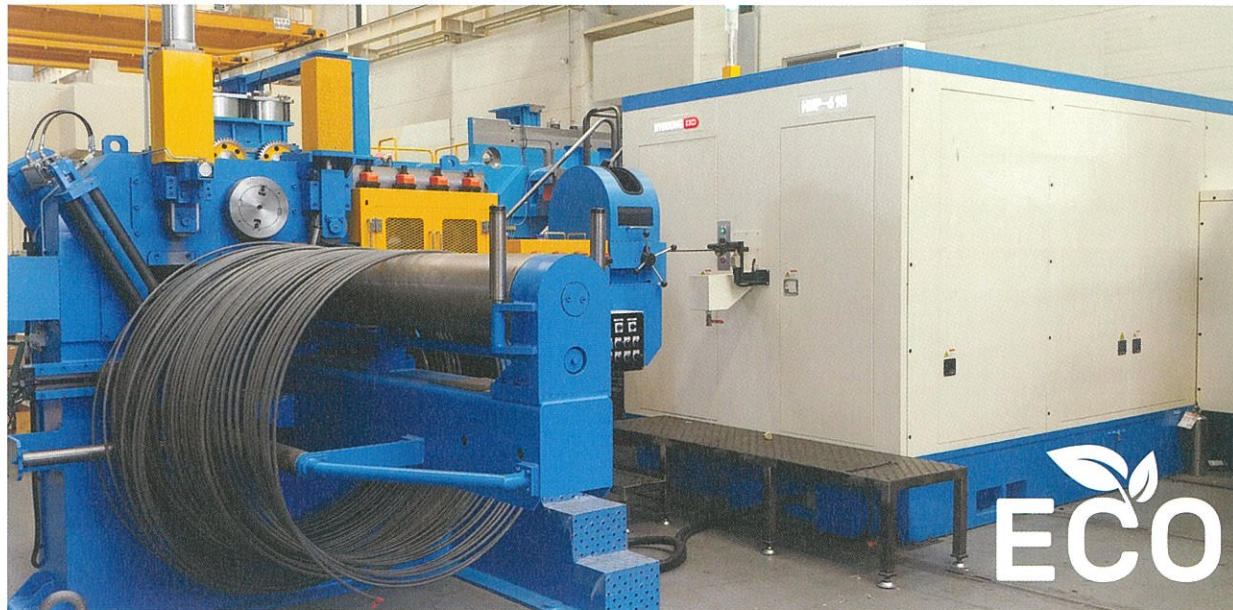


Link Former

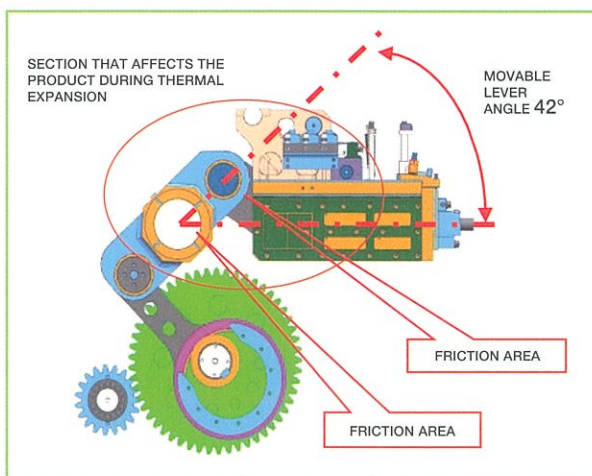
HL Series



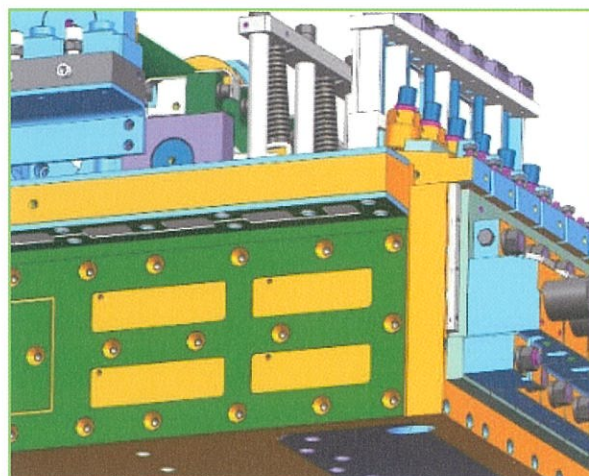
Link former is an innovative former with knuckle press structure developed for the first time in the world by Hyodong Machine. The forming time at the forward position of the ram is secured as long as possible and the plastic deformation time of the product is utilized as long as possible by using the knuckle mechanism instead of the crankshaft drive mechanism. It can minimize the spring back phenomenon of the product. This is how to improve the tooling quality and life effectively.


Link former adopts the power transmission structure of knuckle mechanism structure to overcome the tooling precision and limitations during the forging process of materials which is difficult to form. And this is a new concept former that realizes effects such as reducing tooling load and deformation resistance.

LINK FORMER RAM MECHANIS



INDIVIDUAL CONTROL SYSTEM OF SIMPLE STATIC PRESSURE

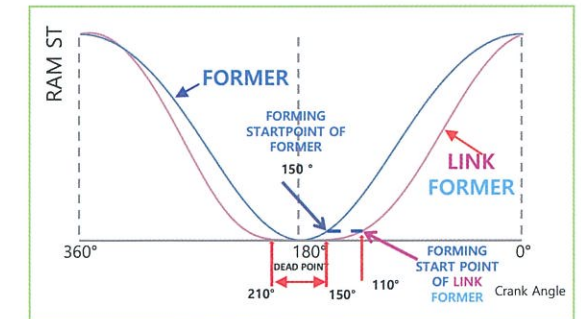


The link former can exert superior power compared to the existing former with minimal power by maximally applying the multi-link structure and gear reduction stage. Compared to the previous former, the motor power is reduced by 50%, which is advantageous for energy saving. 

FORMER vs LINK FORMER

	Former	Link Former
Forging Load	80 Ton	120 Ton
RPM range	110~180	30~180
Main motor	30kw x 6P	15kw x 6P

RAM TIMING OF LINK FORMER



LINK FORMER STOP POINT AT 60°

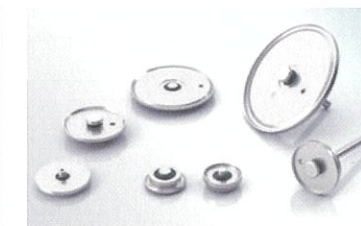
THE ERA OF ELECTRIC VEHICLE

In line with the changes in the automobile industry, the development of future electric vehicle parts is actively in progress.

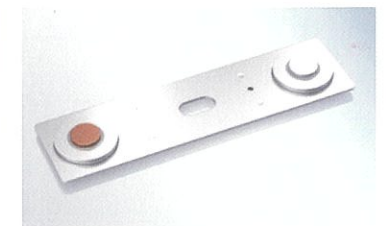
Link former is an optimized former for forming various materials and thin & high-precision parts.



Battery pack assembly of BMW i3



Lithium Primary Battery Cover



Lithium Primary Battery Cover

HL Series Specifications Link Former HL Series

MODEL	Cut-off (mm)	Open UP Dia MAX(mm)	KO (mm)	PKO (mm)	Forging Load (kN)	Main Motor (kW)	Output/ min	Machine weight (Aprox)(kg)	Machine Size (M)
HLNP-611	12x35	21	35	20	1,200	15	220	20,000	4.2x2.4x1.6
HLNP-615	15x50	22	50	20	1,500	15	200	30,000	4.2x2.4x2.2
HLNP-618	18x50	24.5	50	25	1,800	22	180	35,000	6.0x3.0x2.5

※ Specification subject to change without further notice