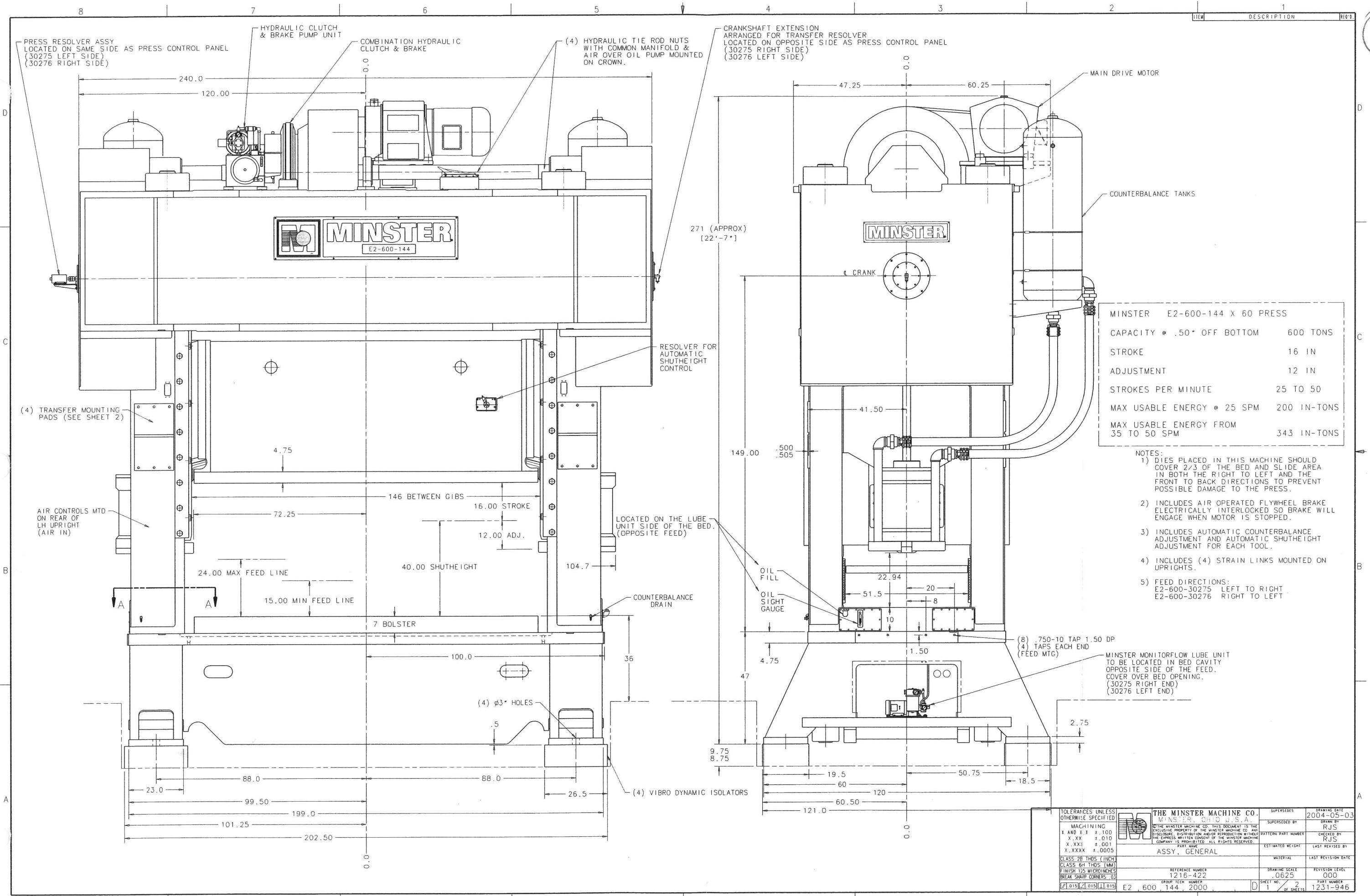


2



MINSTER E2-600-144 X 60 PRESS	
CAPACITY @ .50" OFF BOTTOM	600 TONS
STROKE	16 IN
ADJUSTMENT	12 IN
STROKES PER MINUTE	25 TO 50
MAX USABLE ENERGY @ 25 SPM	200 IN-TONS
MAX USABLE ENERGY FROM 35 TO 50 SPM	343 IN-TONS

- NOTES:
- 1) DIES PLACED IN THIS MACHINE SHOULD COVER 2/3 OF THE BED AND SLIDE AREA IN BOTH THE RIGHT TO LEFT AND THE FRONT TO BACK DIRECTIONS TO PREVENT POSSIBLE DAMAGE TO THE PRESS.
  - 2) INCLUDES AIR OPERATED FLYWHEEL BRAKE ELECTRICALLY INTERLOCKED SO BRAKE WILL ENGAGE WHEN MOTOR IS STOPPED.
  - 3) INCLUDES AUTOMATIC COUNTERBALANCE ADJUSTMENT AND AUTOMATIC SHUTHEIGHT ADJUSTMENT FOR EACH TOOL.
  - 4) INCLUDES (4) STRAIN LINKS MOUNTED ON UPRIGHTS.
  - 5) FEED DIRECTIONS:  
E2-600-30275 LEFT TO RIGHT  
E2-600-30276 RIGHT TO LEFT

TOLERANCES UNLESS OTHERWISE SPECIFIED	THE MINSTER MACHINE CO. MINSTER, OHIO U.S.A.	SUPERSEDES	DRAWING DATE
MACHINING	1216-422	SUPERSEDED BY	2004-05-03
F AND X .1 ± .100	ASSY. GENERAL	CHECKED BY	RJS
X .XX ± .010		PATTERN PART NUMBER	
X .XXI ± .001		ESTIMATED WEIGHT	
X .XXX ± .0005		LAST REVISION DATE	
CLASS 2B THOS (INCH)		MATERIAL	
CLASS 6H THOS (MM)		REVISION LEVEL	000
FINISH 125 MICRONS		DRAWING SCALE	.0625
BREAK SHARP CORNERS .03		SHEET NO.	2
		OF SHEETS	1
GROUP TECH NUMBER	E2 600 144 2000	PART NUMBER	1231-946