




REGUS
MACHINERY

LASER WELDER MACHINE

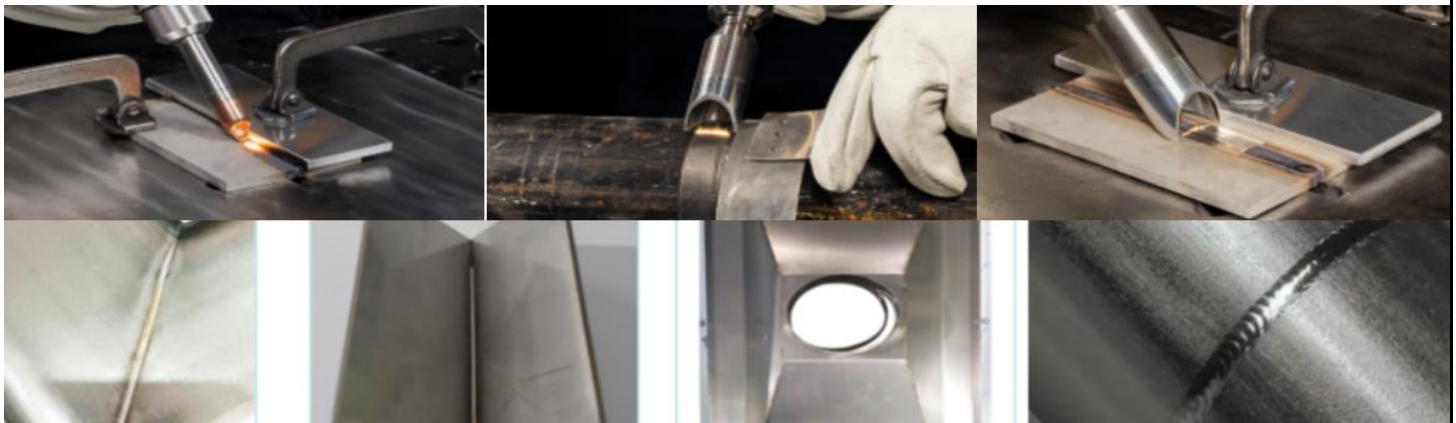
Laser welder Photo	Basic Info	
	<p>XH-LW-3kw Model Laser Welder with Welding/Clearning/Cutting functions</p>	
Transformer		
Protective lenses	unit	Included
Nozzles	unit	Included
Loading Container		LCL
Freight&Tariff		Included
Trade Term		DDP
Payment Terms		30% down payment,70% before shipment.
Warranty		Three years warranty for the machine
Basic Parameter		
Source		3000W MAX Laser Source
Function(3 in 1)		Welding/Clearning/Cutting
Technical Specification		
Laser wave length		1064nm
Welding speed range		0-150mm/s
Output fiber length		Standard 10 Meters/Maximum 15 Meters
Cooling Chiller		Industrial water chiller S&A / TongFei
Auxiliary gas		Nitrogen / Argon / Oxygen
Working environment temperature range		-20℃-45℃
Humidity range of working environment		<70% No condensation
Laser frequency		5000-10000Hz
Gross Weight		245 Kg
Machine dimensions		124*53*105 CM
Working voltage		1-2KW : 220V/SINGLE PHASE/50&60HZ 3KW : 380V/THREE PHASE/50&60HZ

Total power	1.5KW 8.2KVA/37.3A 2KW 10.6KVA/48.3A 3KW 24,6KVA/37.4A
Welding thickness	0.5-8mm
Welding gap requirements	≤8mm
Laser cleaning width	120mm

Configuration List

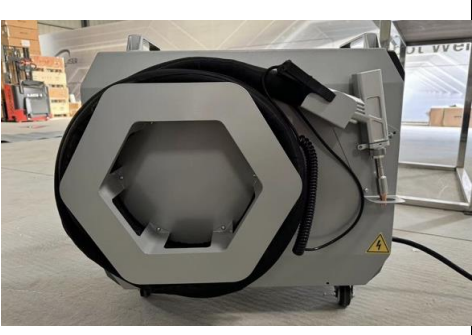
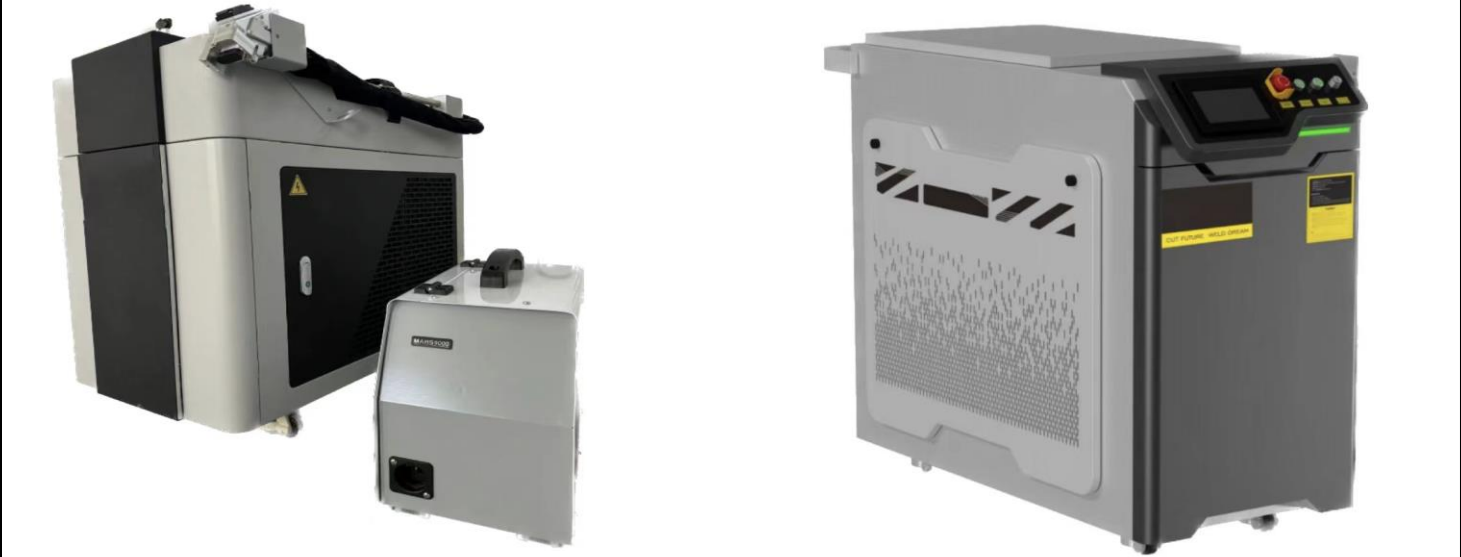
Laser head	XH-Ultra X
Machine body	XH-LASER
Control system	XH-Ultra X 3IN 1
Water chiller	S&A/TF
Control cabinet	XH LASER
Electrical parts	Schneider
Protective cover	XH LASER
Pneumatic components	AirTec
Consumable kit	XH LASER
Tools kit	XH LASER

WELDING PARAMETERS



Power	SS/CS	AL	GL
1000 W	0.5 mm-3mm	0.5 mm-2mm	0.5 mm-3mm
1500 W	0.5 mm-4mm	0.5 mm-3mm	0.5 mm-5mm
2000 W	0.5 mm-6mm	0.5 mm-4mm	0.5 mm-6mm
3000 W	0.5 mm-8mm	0.5 mm-6mm	0.5 mm-8mm

LASER WELDER PHOTOS



SAMPLES



PACKING PHOTOS



Packing in Factory



In Container



In Container Yard

Thank you for the cooperation