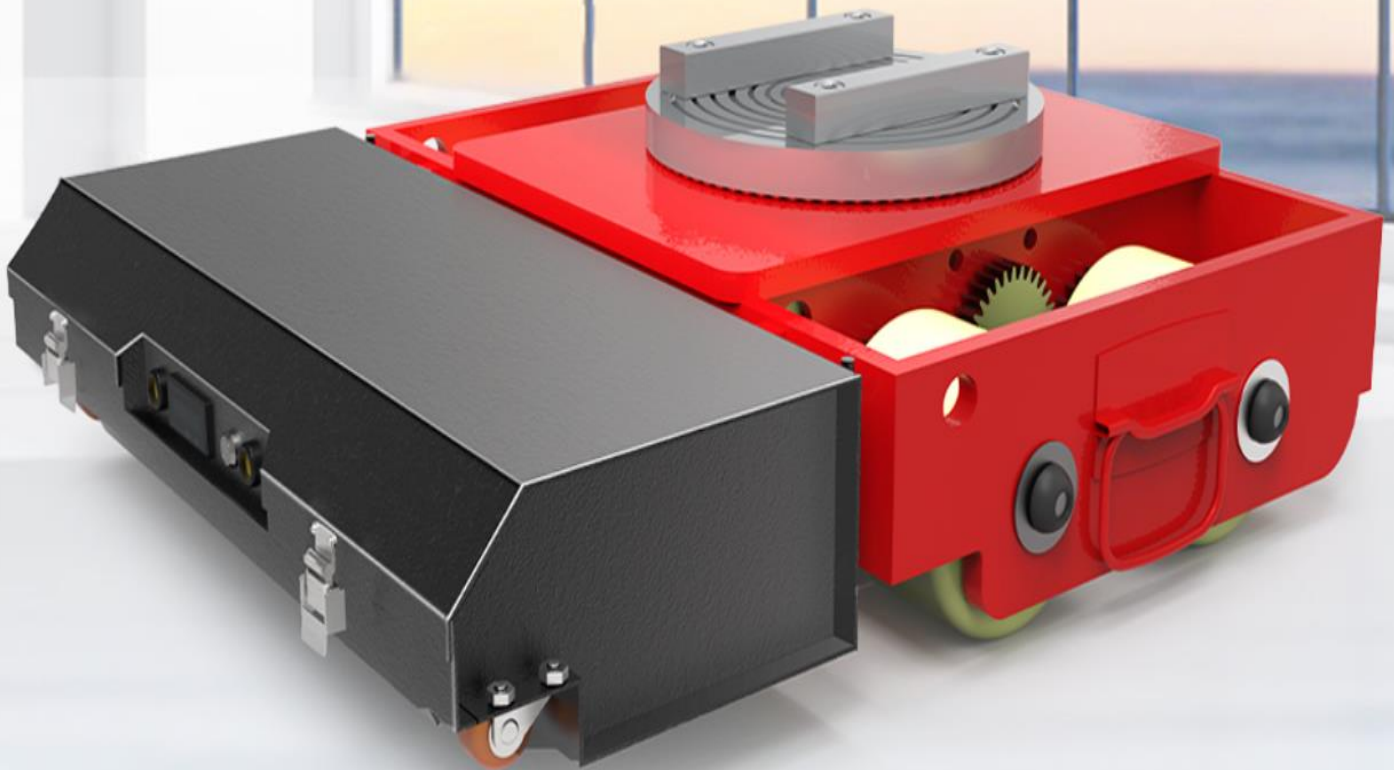


SMC

Smith Machinery
Company, Inc.



POWERED LOAD MOVING SKATE

MODELS

S10/S20/S30

S50/S80/S120

ISO/CE/ANSI/AS/CU-TR/KCS Certificates

S10 (10 Tons) Introduction

Power Strong

. High-power motors matching advanced precision reducers, provide powerful torque output.

Compact Design

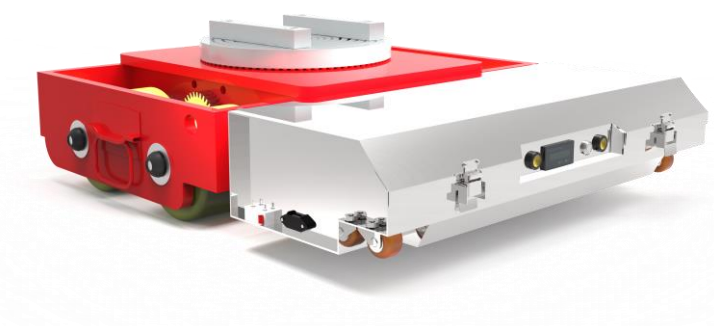
. Low-profile design with almost no turning radius provides superior maneuverability.
 . Wireless control is easy to operate.
 . Core components are under protection of protective case.

Lower Maintenance Cost

. Open structure design Shorten daily maintenance time.
 . Easily change Rechargeable batteries.

More Reliable Performance

. Large capacity lithium battery. Approximately 8 hours of battery life.
 . High strength alloy manganese steel material, resistant to compression without deformation.



Standard Configuration

. Motor: 2*750W	. Wireless control	. Lithium battery
. Speed proportional control	. Alloy metal gear transmission system	. Automatic braking system
. High strength manganese steel body	. LED lighting	. Advanced coating process
. 4x4 Drives	. Rotatable chuck	. Polyurethane drive wheel
. HARBIN axletree	. Quick-change batteries	. Protective plate
.Warranty: Five Years.		

Machine Parameters

. Length (mm) : 720	. Width (mm) : 650	. Height (mm) : 200
. Pulling (Ton) : 10	. Loading (Ton) : 10	. Weight (kg) : 120

Options

. Portable box for machine carrying	. Industrial remote	. 6-Wheel drive
. Electric hydraulic lifting	. Roller dollies	. Color

MODELS

S10/S20/S30
S50/S80/S120

ISO/CE/ANSI/AS/CU-TR/KCS Certificates

S20 (20 Tons) Introduction

Power Strong

. High-power motors matching advanced precision reducers, provide powerful torque output.

Compact Design

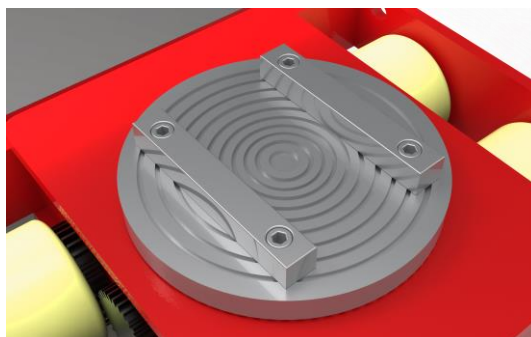
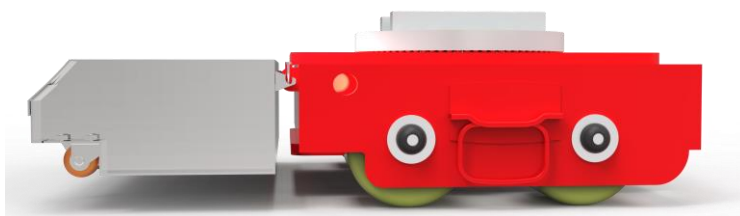
. Low-profile design with almost no turning radius provides superior maneuverability.
. Wireless control is easy to operate.
. Core components are under protection of protective case.

Lower Maintenance Cost

. Open structure design Shorten daily maintenance time.
. Easily change Rechargeable batteries.

More Reliable Performance

. Large capacity lithium battery. Approximately 8 hours of battery life.
. High strength alloy manganese steel material, resistant to compression without deformation.



Standard Configuration

. Motor: 2*1200W	. Wireless control	. Lithium battery
. Speed proportional control	. Alloy metal gear transmission system	. Automatic braking system
. High strength manganese steel body	. LED lighting	. Advanced coating process
. 4×4 Drives	. Rotatable chuck	. Polyurethane drive wheel
. HARBIN axletree	. Quick-change batteries	. Protective plate
. Warranty: Five Years.		

Machine Parameters

. Length (mm) : 720	. Width (mm) : 650	. Height (mm) : 200
. Pulling (Ton) : 20	. Loading (Ton) : 15	. Weight (kg) : 125

Options

. Portable box for machine carrying	. Industrial remote	. 6-Wheel drive
. Electric hydraulic lifting	. Roller dollies	. Color

MODELS

S10/S20/S30

S50/S80/S120

ISO/CE/ANSI/AS/CU-TR/KCS Certificates

S30 (30 Tons) Introduction

Strong Power with Multiple Motors

. High-power motors matching advanced precision reducers, provide powerful torque output.

Compact Design

. Low-profile design with almost no turning radius provides superior maneuverability.
. Wireless control is easy to operate.
. Core components are under protection of protective case.

Lower Maintenance Cost

. Open structure design Shorten daily maintenance time.
. Easily change Rechargeable batteries.

More Reliable Performance

. Large capacity lithium battery. Approximately 8 hours of battery life.
. High strength alloy manganese steel material, resistant to compression without deformation.



Standard Configuration

. Motor: 2*1500W	. Wireless control	. Lithium battery
. Speed proportional control	. Alloy metal gear transmission system	. Automatic braking system
. High strength manganese steel body	. LED lighting	. Advanced coating process
. 4×4 Drives	. Rotatable chuck	. Polyurethane drive wheel
. HARBIN axletree	. Quick-change batteries	. Protective plate
. Warranty: Five Years.		

Machine Parameters

. Length (mm) : 720	. Width (mm) : 650	. Height (mm) : 200
. Pulling (Ton) : 30	. Loading (Ton) : 15	. Weight (kg) : 130

Options

. Portable box for machine carrying	. Industrial remote	. 6-Wheel drive
. Electric hydraulic lifting	. Roller dollies	. Color

MODELS

S10/S20/S30
S50/S80/S120

ISO/CE/ANSI/AS/CU-TR/KCS Certificates

S50 (50 Tons) Introduction

Strong Power with Multiple Motors

. High-power motors matching advanced precision reducers, provide powerful torque output.

Compact Design

. Low-profile design with almost no turning radius provides superior maneuverability.
. Wireless control is easy to operate.
. Core components are under protection of protective case.

Lower Maintenance Cost

. Open structure shorten daily maintenance time.
. Easily change Rechargeable batteries.

More Reliable Performance

. Large capacity lithium battery. Approximately 8 hours of battery life.
. High strength alloy manganese steel material, resistant to compression without deformation.



Standard Configuration

. Motor: 2*2400W	. Wireless control	. Lithium battery
. Speed proportional control	. Alloy metal gear transmission system	. Automatic braking system
. High strength manganese steel body	. LED lighting	. Advanced coating process
. 4x4 Drives	. Rotatable chuck	. Polyurethane drive wheel
. HARBIN axletree	. Quick-change batteries	. Protective plate
. Warranty: Five Years.		

Machine Parameters

. Length (mm) : 820	. Width (mm) : 750	. Height (mm) : 220
. Pulling (Ton) : 50	. Loading (Ton) : 30	. Weight (kg) : 180

Options

. Portable box for machine carrying	. Industrial remote	. 6-Wheel drive
. Electric hydraulic lifting	. Roller dollies	. Color

MODELS

S10/S20/S30

S50/S80/S120

ISO/CE/ANSI/AS/CU-TR/KCS Certificates

S80 (80 Tons) Introduction

Strong Power with Multiple Motors

. High-power motors matching advanced precision reducers, provide powerful torque output.

Compact Design

. Low-profile design with almost no turning radius provides superior maneuverability.
. Wireless control is easy to operate.
. Core components are under protection of protective case.

Lower Maintenance Cost

. Open structure shorten daily maintenance time.
. Easily change Rechargeable batteries.

More Reliable Performance

. Large capacity lithium battery. Approximately 8 hours of battery life.
. High strength alloy manganese steel material, resistant to compression without deformation.



Standard Configuration

. Motor: 2*3000W	. Wireless control	. Lithium battery
. Speed proportional control	. Alloy metal gear transmission system	. Automatic braking system
. High strength manganese steel body	. LED lighting	. Advanced coating process
. 4x4 Drives	. Rotatable chuck	. Polyurethane drive wheel
. HARBIN axletree	. Quick-change batteries	. Protective plate
. Warranty: Five Years.		

Machine Parameters

. Length (mm) : 1250	. Width (mm) : 1050	. Height (mm) : 300
. Pulling (Ton) : 80	. Loading (Ton) : 35	. Weight (kg) : 550

Options

. Portable box for machine carrying	. Industrial remote	. 6-Wheel drive
. Electric hydraulic lifting	. Roller dollies	. Color

MODELS

S10/S20/S30
S50/S80/S120

ISO/CE/ANSI/AS/CU-TR/KCS Certificates

S120 (120 Tons) Introduction

Strong Power with Multiple Motors

. High-power motors matching advanced precision reducers, provide powerful torque output.

Compact Design

. Low-profile design with almost no turning radius provides superior maneuverability.
. Wireless control is easy to operate.
. Core components are under protection of protective case.

Lower Maintenance Cost

. Open structure shorten daily maintenance time.
. Easily change Rechargeable batteries.

More Reliable Performance

. Large capacity lithium battery. Approximately 8 hours of battery life.
. High strength alloy manganese steel material, resistant to compression without deformation.



Standard Configuration

. Motor 4*3000W	. Wireless control	. Lithium battery
. Speed proportional control	. Alloy metal gear transmission system	. Automatic braking system
. High strength manganese steel body	. LED lighting	. Advanced coating process
. 4x4 Drives	. Rotatable chuck	. Polyurethane drive wheel
. HARBIN axletree	. Quick-change batteries	. Protective plate
. Warranty: Five Years.		

Machine Parameters

. Length (mm) : 1450	. Width (mm) : 1250	. Height (mm) : 320
. Pulling (Ton) : 120	. Loading (Ton) : 40	. Weight (kg) : 650

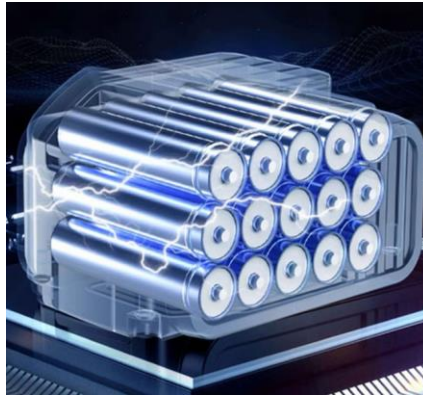
Options

. Portable box for machine carrying	. Industrial remote	. 6-Wheel drive
. Electric hydraulic lifting	. Roller dollies	. Color

COMPONENTS



High-Power Motors



Lithium Battery



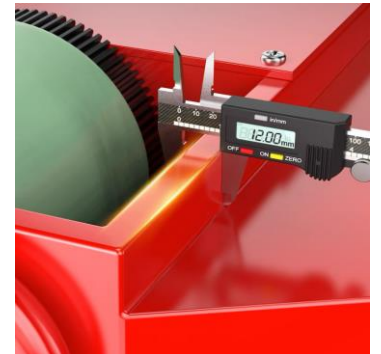
Wireless Remote Control



Wear-resistant rollers



LED Display



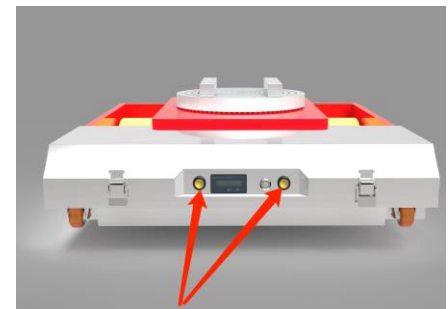
Thickened manganese steel



360 Degree Rotate Panel



Universal Wheels



LED Light

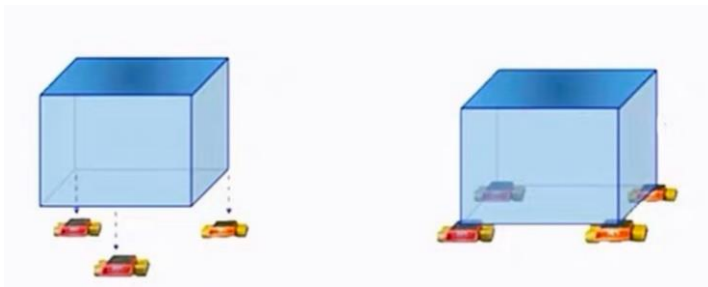
MOVING METHODS



Crowbar lifting



Toe Jack lifting



TANK KIT



Eco-Skate



Rotated Skate



Hydraulic Joe Jack



Crowbar



3-Point Skates

APPLICATION



Factory Moving



Oil Tank Moving



New Machine Installation



**Equipment Position
Adjusting**

MORE APPLICATION SCENARIOS





