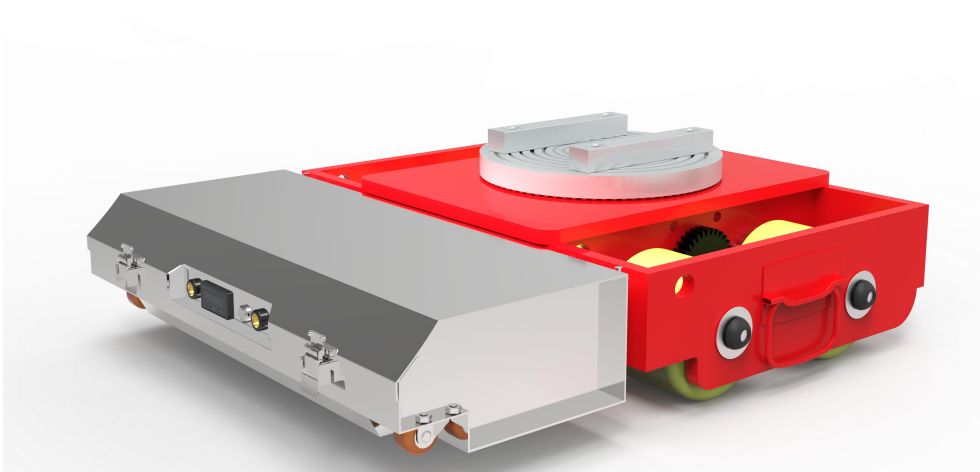




Powered Load Moving Skate User Manual



Contents

Introduction	3
Safety Precautions	3
Models Specification	3
Components Introduction	4
Operation Instructions	5
Remote control introduction	7
Maintenance and Care	8
Conclusion	8

Introduction

- Welcome to the user manual for our powered load moving skate. This manual will provide you with all the necessary information to safely and effectively operate this product.

Safety Precautions

- Always wear appropriate personal protective equipment, such as gloves and safety shoes, when operating the skate.
- Inspect the skate before each use for any signs of damage or malfunction. Do not use if damaged.
- Keep the work area clear of obstacles and ensure there is sufficient space for maneuvering the skate.
- Do not overload the skate. Refer to the specifications for the maximum load capacity.
- Follow all local safety regulations and guidelines.

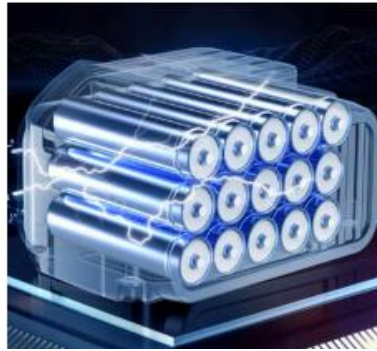
Models Specification

Products Basic Parameters				
Model	Pulling Capbility	Loading Capbility	Diamentions (length*width*height)	Weight(kg)
S10	10 Tons	10 Tons	720*650*200mm	120
S20	20 Tons	15 Tons	720*650*200mm	125
S30	30 Tons	15 Tons	720*650*200mm	130
S50	50Tons	30 Tons	820*750*220mm	185
S80	80Tons	35 Tons	1250*1050*300mm	550
S120	120Tons	40 Tons	1450*1250*320mm	650

Components Introduction



High-Power Motors:
Proving pulling power from 10 tons to 120 tons.



Lithium Battery:
Despite its compact size, this carrying tank offers an operational time of 6-8 hours.



Wireless Remote Control:
Please refer to Remote Control Introduction below.



Wear-resistant rollers:
It is equipped with strong bearing capacity, anti-slip and anti-corrosion characteristics.



LED Display:
Convenient to observe the power to remind timely charging.



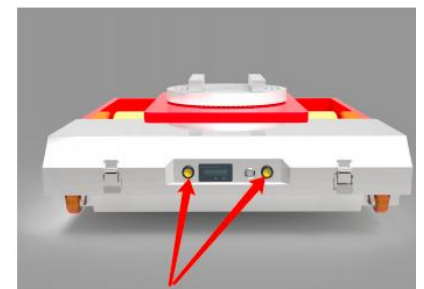
Thickened manganese steel:
Greatly improve the weighing capacity, the maximum load can reach up to 40Tons



360 Degree Rotate Panel :
360 degrees in place, using the buckle design to prevent goods from sliding.



Universal Wheels:
It ensures that the skate can turn smoothly while moving forward.



LED Light:
Provide lighting, let the skates can work in dark environment.

Operation Instructions

Here are the steps to use a powered load moving skate:

1. Preparation

- Check the condition of the skate to ensure it is in good working order. Look for any signs of damage or malfunction.
- Determine the weight and size of the load you will be moving. Make sure the skate is suitable for the specific load.

2. Loading

- Position the skate under the load. If possible, use appropriate lifting equipment or assistance to carefully place the load onto the skate.
- Ensure the load is centered and stable on the skate to prevent tipping or imbalance.
- Two recommended ways to load



Crowbar lifting



Toe Jack lifting

3. Recommended Tools with the Powered Load Moving Skate:



Eco-skate



Rotated skate



Hydraulic Toe Jack

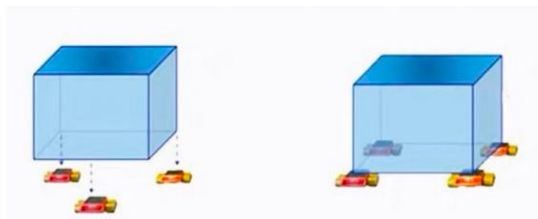
4.Moving Methods

- According to the size of the goods, we recommend the customer to use one tank and two skates.

In general, it is recommended that the weight of the cargo does not exceed the total load of the tank vehicle combination

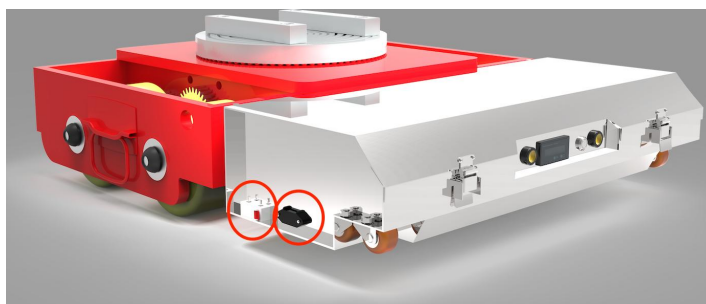
- According to the size of the goods, we recommend the customer to use two tanks and two skates.

In general, it is recommended that the weight of the cargo does not exceed the total load of the tank vehicle combination. please refer to the pictures below:



5.Operation

- Turn on the power source of the skate. This could be an electric motor or other power mechanism. Please refer to circled part on the Picuture below.



- Use the controls provided (such as a joystick or buttons) to move the skate forward, backward, left, or right.
- Operate the skate at a safe speed, taking into account the surrounding environment and any obstacles.

6.Unloading

- When you reach the destination, carefully remove the load from the skate. Again, use proper lifting techniques if necessary.
- Turn off the power to the skate and store it in a safe place when not in use.

Remember to always follow the manufacturer's instructions and safety guidelines when using a powered load moving skate to ensure proper operation and prevent accidents.

Remote control introduction



1. power switch
2. High and Low speed gear
3. Cruise control gear
4. Forward and backward joystick
5. left and right steering joystick
6. Motor fine tuning
7. menu
8. function Lock

Maintenance and Care

- Regularly inspect the skate for wear and tear. Replace any damaged parts promptly.
- Keep the skate clean and free from debris. Use a mild detergent and water to clean the surface.
- Lubricate the wheels and moving parts as recommended by the manufacturer.
- Store the skate in a dry and secure location when not in use.

Conclusion

Thank you for choosing our powered load moving skate. We hope this user manual has been helpful in ensuring your safe and efficient use of the product. If you have any further questions or need assistance, please contact our customer service department.

Remember to include clear illustrations and diagrams throughout the manual to enhance understanding. Also, make sure the language is simple and easy to understand for users with different levels of technical knowledge.



Version No. 202409

www.smithmachinery.com

Smith Machinery Company, Inc.
1287 W Ave. Ames, IA 50014
Toll Free: 800-237-6330
Office: 515-233-6330
smc@smithmachinery.com