

HYDRAULIC TIE ROD NUTS WITH COMMON MANIFOLD AND MANUAL PUMP

198.5 (16' 6.5") APPROX.

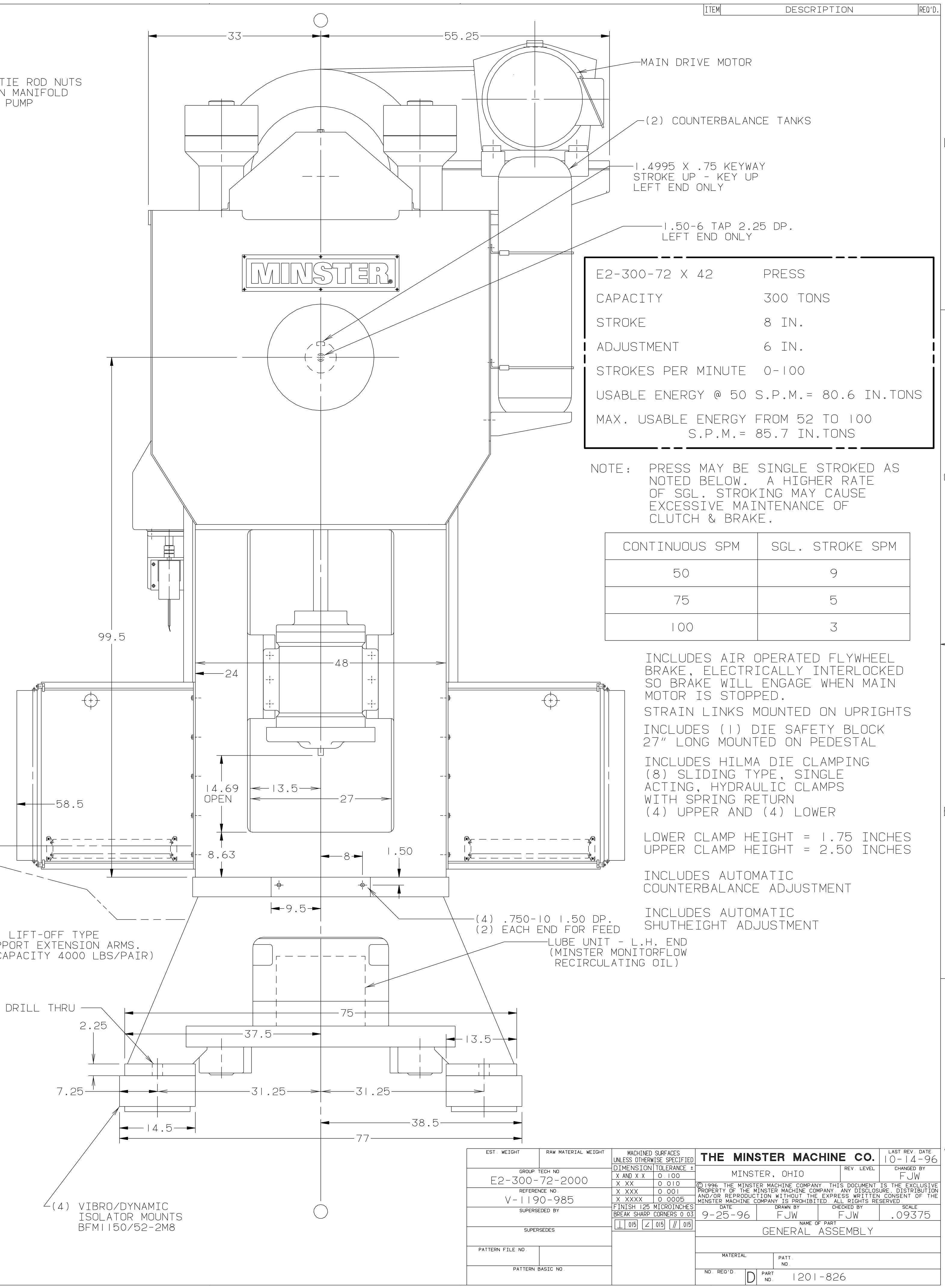
ARRANGED FOR MICRO SHUTHEIGHT INDICATOR (PARTS NOT FURNISHED)

"BLACK MAX" LIGHT CURTAIN 900276 LL-MAX 30AS 900285 LL-MAX-24RDS (FRONT AND REAR)

(2) OIL TROUGHS (1) FRONT & (1) REAR

(2) "HILMA" LIFT-OFF TYPE DIE SUPPORT EXTENSION ARMS. (MAX. CAPACITY 4000 LBS/PAIR)

(4) VIBRO/DYNAMIC ISOLATOR MOUNTS BFM1150/52-2M8



E2-300-72 X 42	PRESS
CAPACITY	300 TONS
STROKE	8 IN.
ADJUSTMENT	6 IN.
STROKES PER MINUTE	0-100
USABLE ENERGY @ 50 S.P.M.	= 80.6 IN.TONS
MAX. USABLE ENERGY FROM 52 TO 100 S.P.M.	= 85.7 IN.TONS

NOTE: PRESS MAY BE SINGLE STROKED AS NOTED BELOW. A HIGHER RATE OF SGL. STROKING MAY CAUSE EXCESSIVE MAINTENANCE OF CLUTCH & BRAKE.

CONTINUOUS SPM	SGL. STROKE SPM
50	9
75	5
100	3

INCLUDES AIR OPERATED FLYWHEEL BRAKE, ELECTRICALLY INTERLOCKED SO BRAKE WILL ENGAGE WHEN MAIN MOTOR IS STOPPED.

STRAIN LINKS MOUNTED ON UPRIGHTS INCLUDES (1) DIE SAFETY BLOCK 27" LONG MOUNTED ON PEDESTAL

INCLUDES HILMA DIE CLAMPING (8) SLIDING TYPE, SINGLE ACTING, HYDRAULIC CLAMPS WITH SPRING RETURN (4) UPPER AND (4) LOWER

LOWER CLAMP HEIGHT = 1.75 INCHES
UPPER CLAMP HEIGHT = 2.50 INCHES

INCLUDES AUTOMATIC COUNTERBALANCE ADJUSTMENT

INCLUDES AUTOMATIC SHUTHEIGHT ADJUSTMENT

EST. WEIGHT	RAW MATERIAL WEIGHT	MACHINED SURFACES UNLESS OTHERWISE SPECIFIED	THE MINSTER MACHINE CO.		LAST REV. DATE
		DIMENSION TOLERANCE 1	MINSTER, OHIO	REV. LEVEL	10-14-96
GROUP TECH NO	E2-300-72-2000	X AND X X 0 1.00	CHANGED BY FJW		
REFERENCE NO	V-1190-985	X XXX 0 0.10	PROPERTY OF THE MINSTER MACHINE COMPANY. THIS DOCUMENT IS THE EXCLUSIVE PROPERTY OF THE MINSTER MACHINE COMPANY. ANY DISCLOSURE, DISTRIBUTION AND/OR REPRODUCTION WITHOUT THE EXPRESS WRITTEN CONSENT OF THE MINSTER MACHINE COMPANY IS PROHIBITED. ALL RIGHTS RESERVED.		
SUPERSEDED BY		X XXXX 0 0.005	DATE	DRAWN BY	CHECKED BY
		FINISH 125 MICROINCHES	9-25-96	FJW	FJW
		BREAK SHARP CORNERS 0.03			SCALE .09375
		[1] [015] [Z] [015] [Z] [015]	NAME OF PART GENERAL ASSEMBLY		
PATTERN FILE NO			MATERIAL	PART NO	
PATTERN BASIC NO			NO	REV'D	D PART NO 1201-826