

ELEVATION VIEW

EQUIPMENT SPECIFICATIONS

- 1) CWP ULTRASONIC LOOP CONTROL UNIT
- 2) MODEL 18PTT12 HEAVY DUTY PNEUMATIC THREADING TABLE
- 3) MODEL 18-3.5 POWERED STOCK CRADLE / STRAIGHTENER WITH ANGLED HEAD CABINET, MODULATING DRIVE, HANDWHEEL ADJ. EDGE GUIDES AND EXIT CASCADE
- 4) MODEL 18HDP HOLD-DOWN THREADER PEELER SYSTEM. THIS SYSTEM INCLUDES: HOLD-DOWN ARM, POWERED RIDER ROLL, PEELER TABLE, PEELER BLADE, COMBINATION DEBENDER AND CONSOLIDATED CONTROLS
- 5) MODEL SMX-18 H6 HEAVY DUTY SERVO ROLLFEED WITH ADJUSTABLE HEIGHT CABINET ANTI-BACKUP ROLLS, HANDWHEEL EDGE GUIDES AND ENTRANCE CASCADE

NOTE: 1) LOOPING PIT DIMENSIONS BASED ON A MAXIMUM SYSTEM MATERIAL THICKNESS CAPACITY OF .250 WILL HAVE A MAXIMUM SLACK MATERIAL OF 20.00" WITH A FEED PASS LINE HEIGHT OF 46.50" AND A MATERIAL YIELD OF 37,000-97,000 PSI FOR .078 THICK MATERIAL, THE MAXIMUM SLACK MATERIAL IS 42.00".

- 2) OPERATOR CONTROL CONSOLE FOR SERVO ELECTRIC ROLL FEED NOT SHOWN IN ELEVATION VIEW FOR CLARITY
- 3) SAFETY GUARDS ON UNITS NOT SHOWN FOR CLARITY

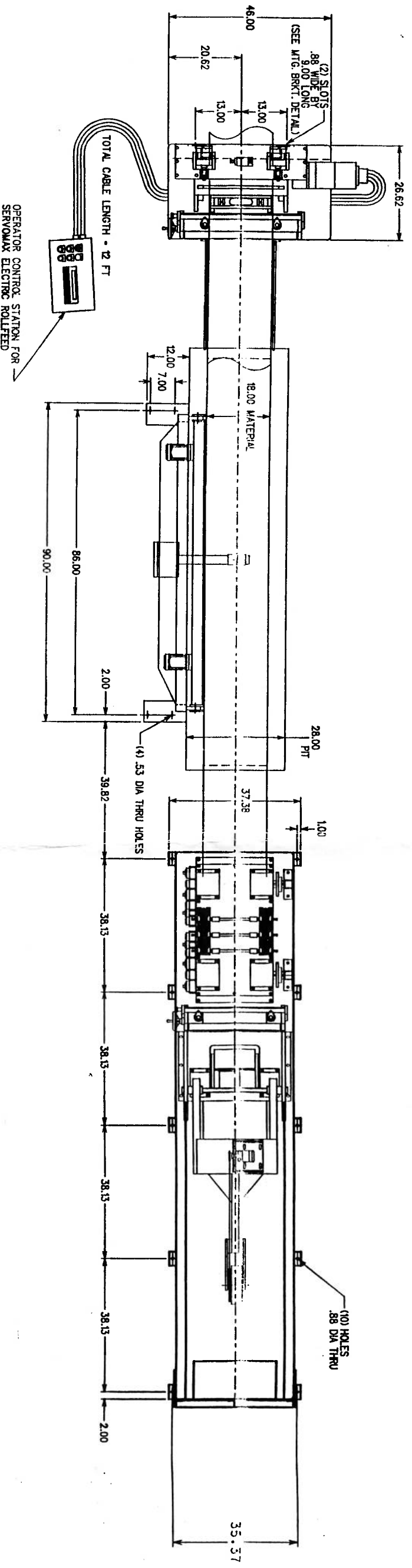
⚠ WARNING:
PERIMETER GUARDING IS NECESSARY AND THE EQUIPMENT SHOULD NOT BE USED WITHOUT IT.
IT IS THE USER'S RESPONSIBILITY TO PROVIDE SUCH GUARDING IN ACCORDANCE WITH APPLICABLE LAWS AND REGULATIONS

COOPER-WEYMOUTH, PETERSON
CLINTON, MAINE 04927

JOHN DEERE

FILE: \LINE-DWG\ DEERE1.DGN

DATE	BY	CHKD	REV	QTY	DWG SIZE
11/03/98	CGM	REF	1	1	B
DWG. NO.		DEERE1-A			



PLAN VIEW

WARNING:
 PERMETER GUARDING IS NECESSARY AND THE EQUIPMENT SHOULD NOT BE USED WITHOUT IT. IT IS THE USER'S RESPONSIBILITY TO PROVIDE SUCH GUARDING IN ACCORDANCE WITH APPLICABLE LAWS AND REGULATIONS

COOPER-WEYMOUTH, PETERSON			
CLINTON, MAINE 04927			
JOHN DEERE			
FILE: \LINE-DWG\ DEERE1.DGN			
DATE	BY	CHKD	SHT
11/03/98	CGM	REF	2
DWG. NO.	DEERE1-A	REV	OF
			2
			DWG SIZE
			B