

Neway CNC (USA), INC

9757 Stafford Centre Drive Stafford, Texas 77477.USA

Tel: 281-969-5800

Web: www.newaycnc.us



NEWAY NL-20050S

Heavy-duty 5 Meter Flatbed CNC Lathe

Neway CNC (USA), INC

9757 Stafford Centre Drive Stafford, Texas 77477.USA

Tel: 281-969-5800

Web: www.newaycnc.us

Mandrel taper hole: Metric 100

FEEDRATE

X/Z Axis Rapid: 236.4 / 236.4 IPM (6 / 6 m/min)

POWER & AIR REQUIREMENTS

220 Volts/ 3 Phase/ 60 Cycle

GENERAL

Machine Weight: 90,000 lbs. (45,000 Kg)

Floor space (L x W X H): 559" x 203.5" x 129.9" (14,200 x 5,170x 3,300 mm)

Standard Accessories

- FANUC Oi–TF Plus control
- 1,800 mm, 4-Jaw Manual chuck
- 4-station hydraulic turret
- 4-Jaw Manual chuck 1,800 mm
- A/C Electric cabinet
- Automatic Lubricating System
- Hydraulic system
- Coolant System & Air Gun
- Operation manual
- Hydraulic tailstock
- **Linear glass scale on X/Y axis**
- **Lift-up chip conveyor**
- Scrap cart
- 3-color cycle light
- Work light
- Foundation kit

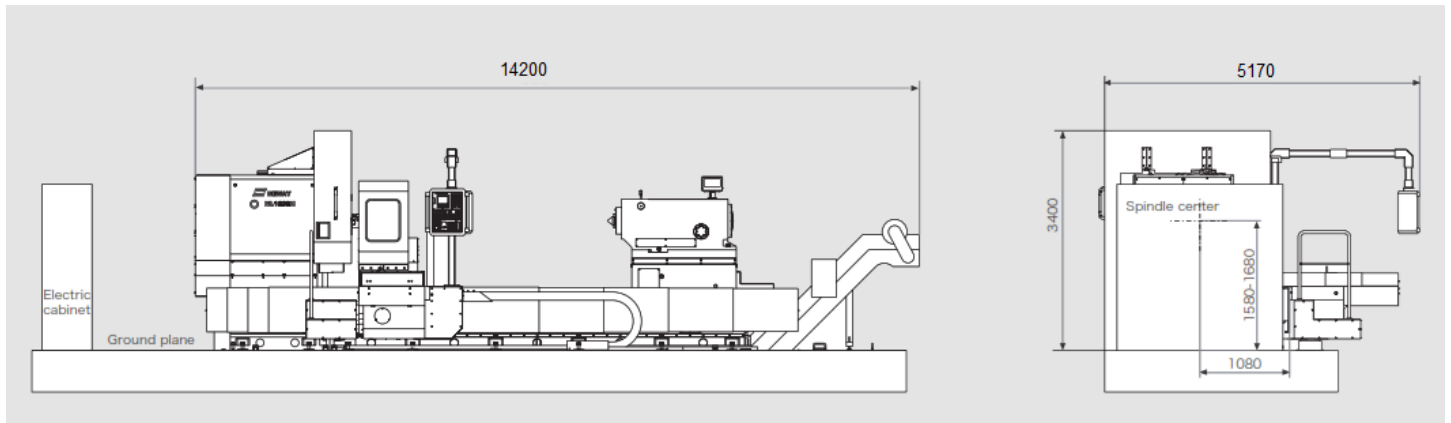
Warranty

1. One Year Full Neway Machine Warranty Parts and Labor
2. Two Years Full Fanuc Control Warranty

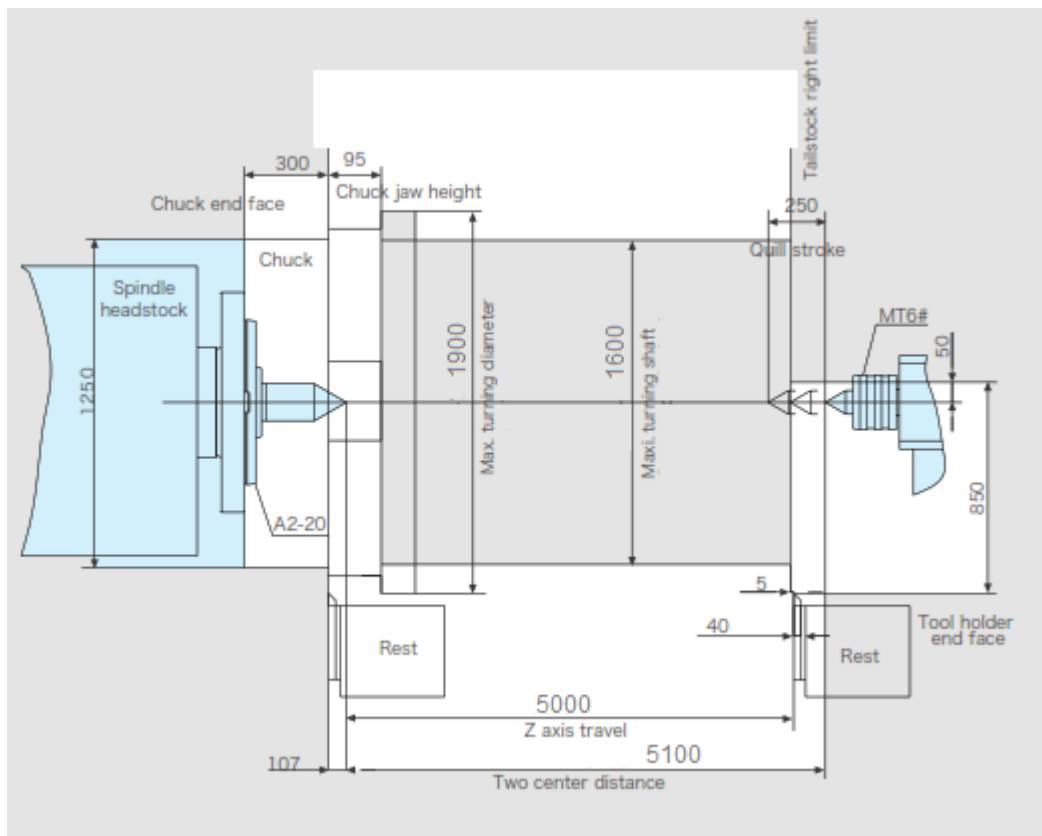
Options

Item	Price
Custom Made Open Top Steady rest	PUR
Custom Made Full Enclosed Steady rest	PUR

Machine Layout

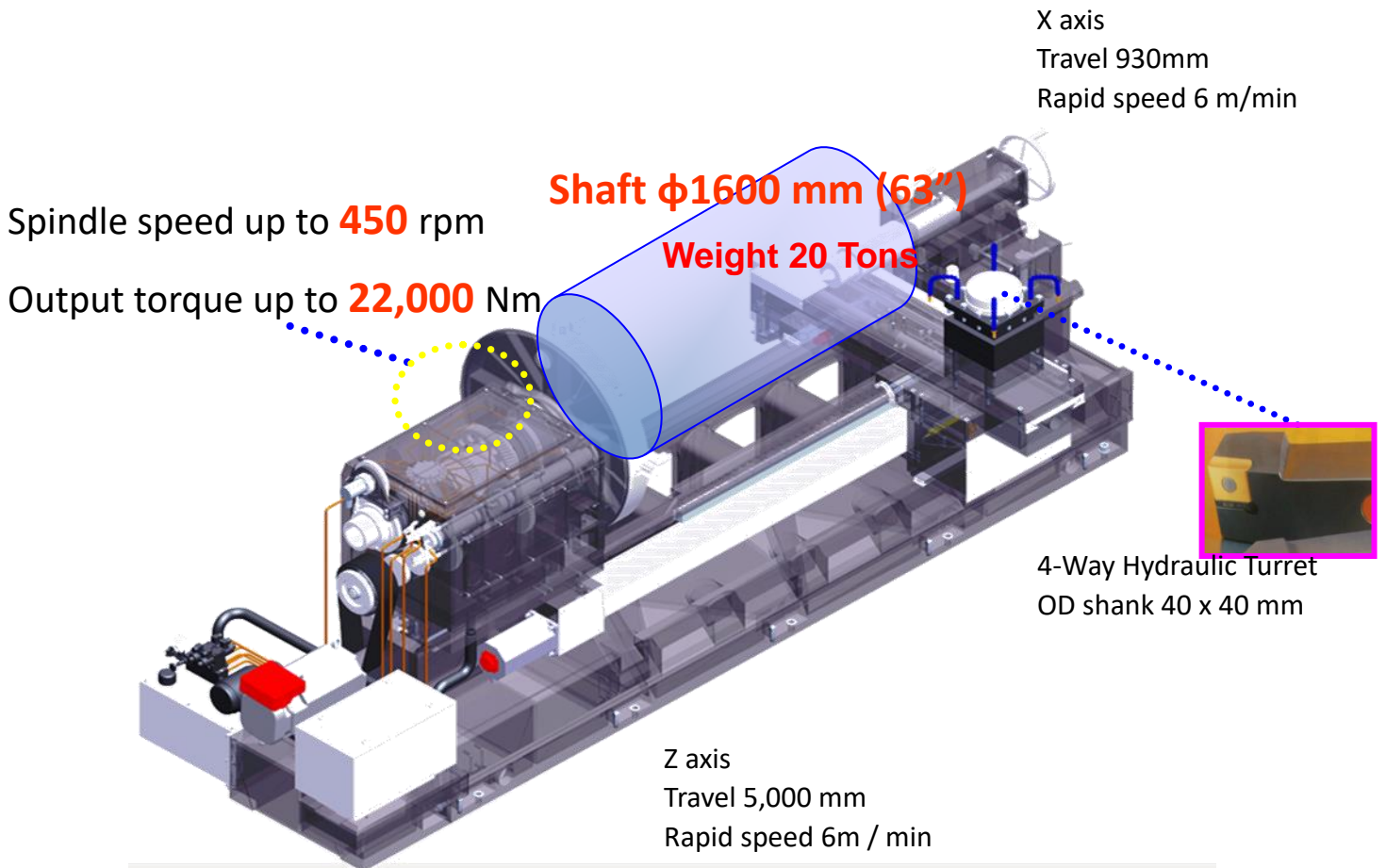


Work Range



Features

Single piece casting with larger wide span guide way



All Meehanite cast iron construction with ribbed torque tube design and wide stance machine base provide excellent support and damping character. The slant bed design at lower part of bed ensures the chips and coolant fall directly into the chip pan.

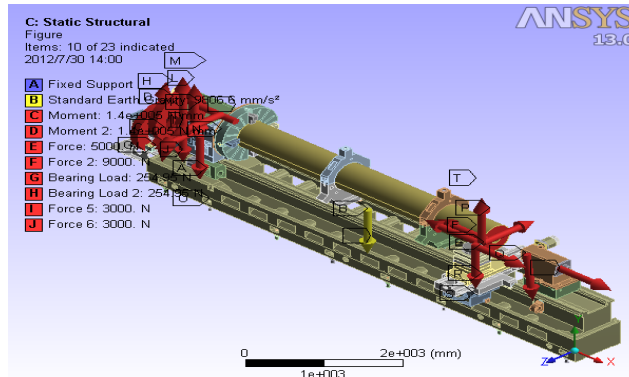
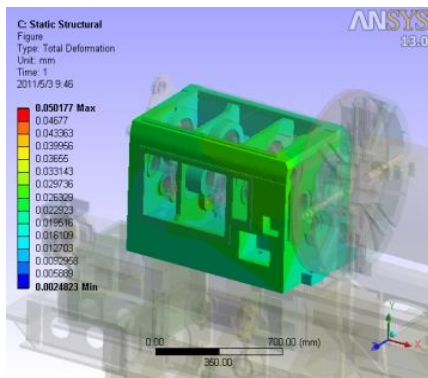
All guideways are rectangular type for unsurpassed long-term rigidity and accuracy. Each guideway is induction hardened and precision ground. The hardness is between 49 to 52 HRC. Turcite B is bonded to mating way surfaces and then hand scraped for perfect fit and center height. This material provides a low friction surface which virtually eliminates guideway wear. It also provides vibration dampening for better surface finishes. All guideways are fully protected by heavy gauge stainless steel covers on both sides of the carriage ways.

The bed casting has channels that collect lubes from the Z axis into a separate reservoir. Waste oil tanks can be conveniently drained.

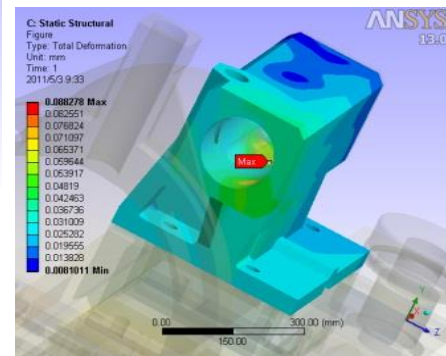
Finite Element Analysis

The computer optimal design guarantees integral rigidity with compact structure. All castings pass finite-element analysis (FEA) test, every part carrying capability is under reasonable scope.

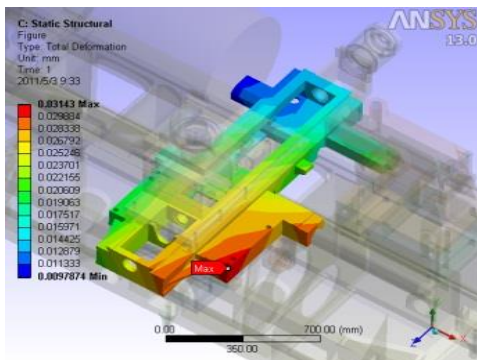
Headstock



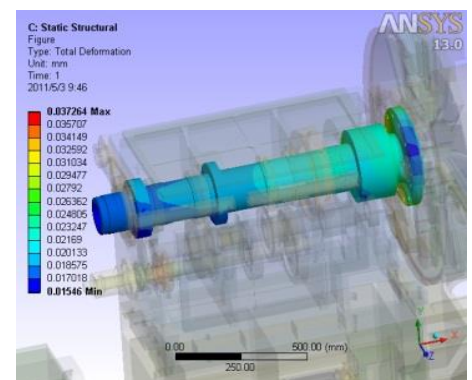
Tailstock



Carriage

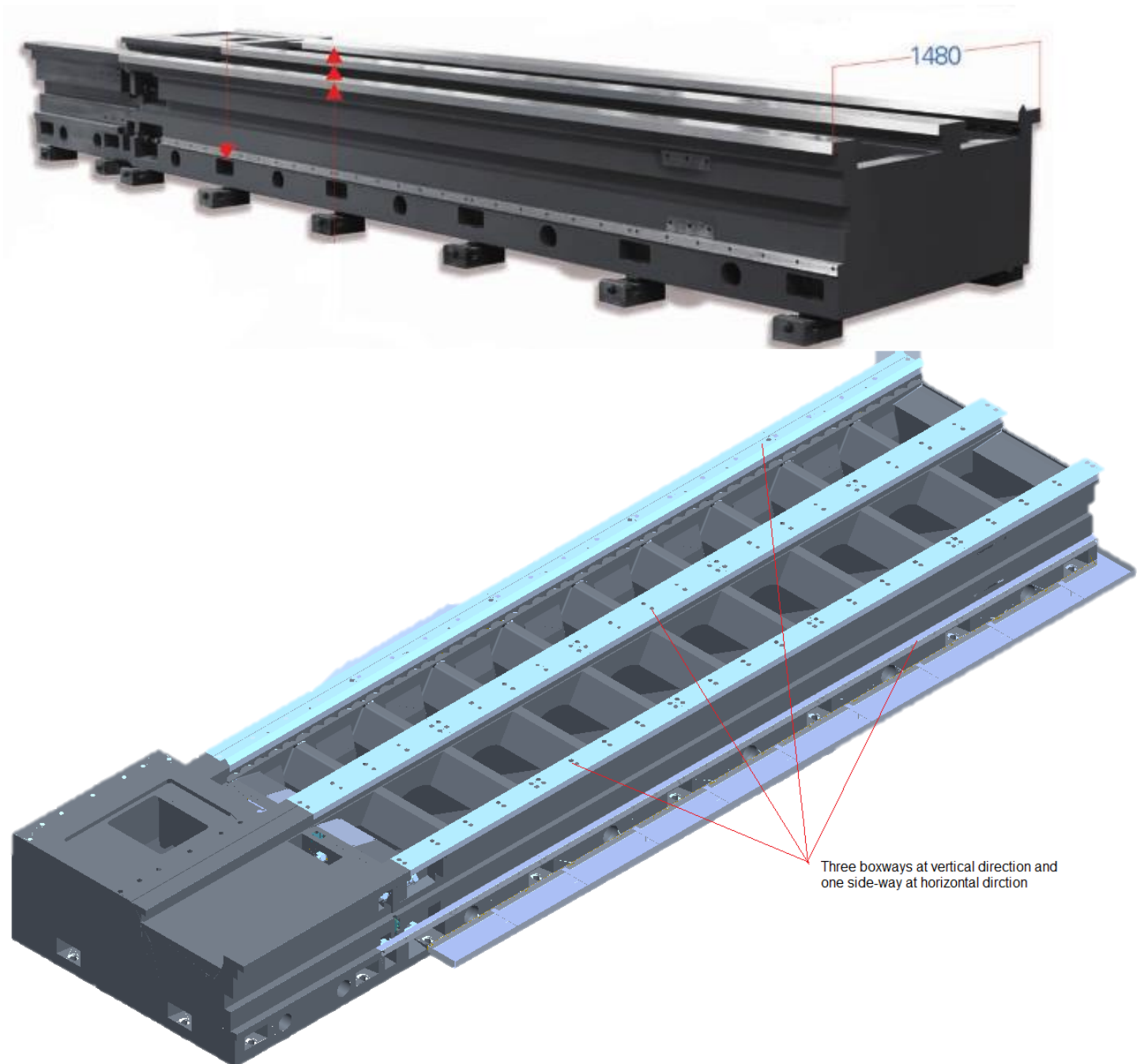


Spindle



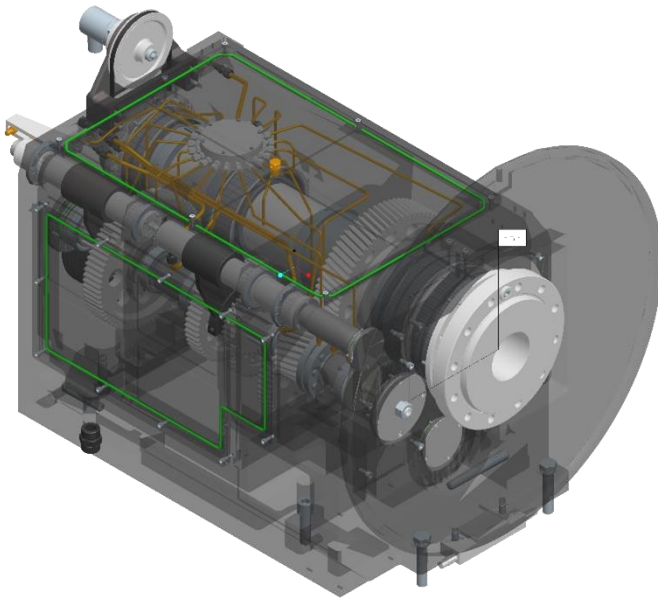
Machine bed

Anti-bending and anti-torque design increase machine rigidity with 1,480 mm bed width.

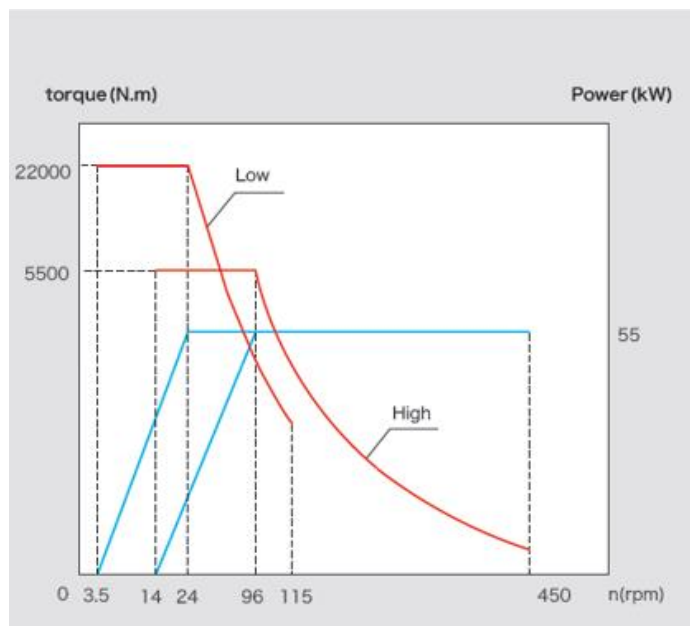


Patented 4-ways design for Stronger Support and Rigidity

Headstock



2-speed gear with automatic hydraulic gear shift that generates maximum 22,000 NM (16,227 ft-lb) of output torque. The spindle bearings are high-grade SKF cylindrical rollers type provide powerful cutting capability and support.



Neway CNC (USA), INC

9757 Stafford Centre Drive Stafford, Texas 77477.USA

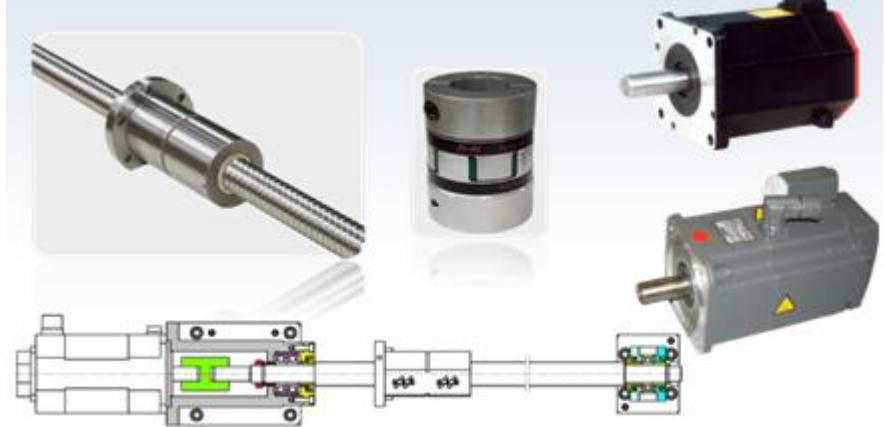
Tel: 281-969-5800

Web: www.newaycnc.us



Drive system

Each axis is driven by a large diameter HIWIN C3 double nuts ball screw with high rapid traverse rates and high feed thrust. The X & Z axis ball screws are preloaded for accurate positioning and thermal stability. The thrust bearings are precision class P4 NSK angular contact type. Ball screws are directly mounted to the AC servo motors without intermediate gears or belts to minimize backlash.



Each axis has an electric torque limiter to protect the ball screw and minimize damage in case of a crash.

Automatic Programmable Tailstock

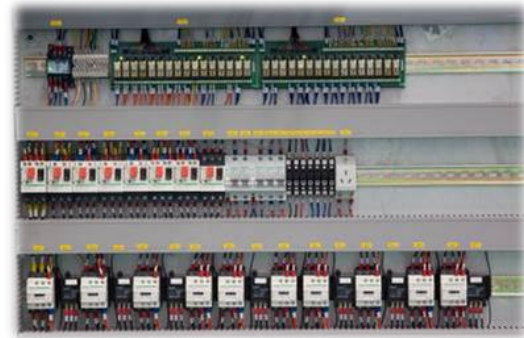
The heavy-duty hydraulic tailstock is programmable in positioning driven by hydraulic motor.

Quill taper is metric 100.



Accessories

Clear and easy maintenance with all CE standard components



electrical



Automatic oil pump provides lubrication to the guide ways, ball screws, quill which precisely controls the volume of oil to these critical components. A low-level alarm reminds operator before machine stop.

Air conditioner electrical cabinet maintains constant temperature and prevents the over-heat problem of drives.

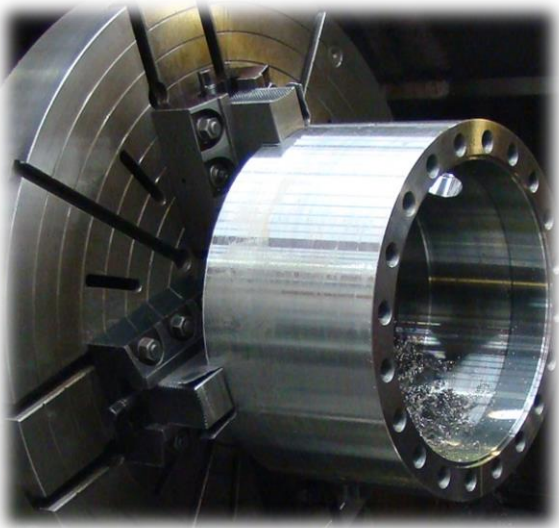


Neway CNC (USA), INC
9757 Stafford Centre Drive Stafford, Texas 77477.USA
Tel: 281-969-5800 Web: www.newaycnc.us



Chuck

Standard 4-Jaw, manual chuck, diameter 1,800mm (71") with top reversible jaws



4-Way Auto Hydraulic Turret

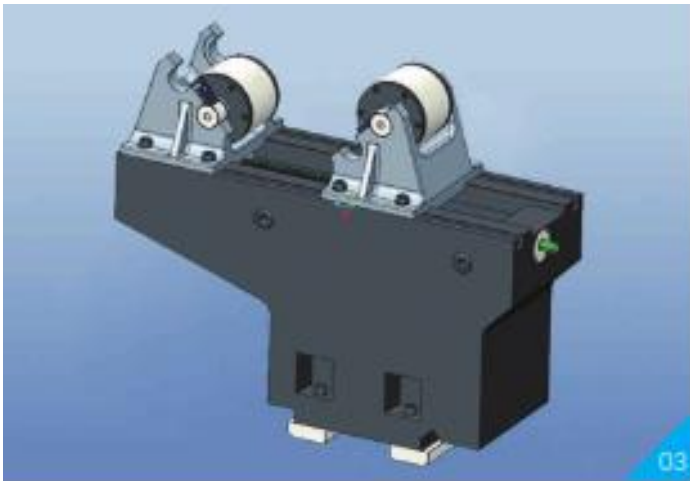


4-way auto hydraulic turret with 1.5 x 1.5" (40 x 40 mm) shank

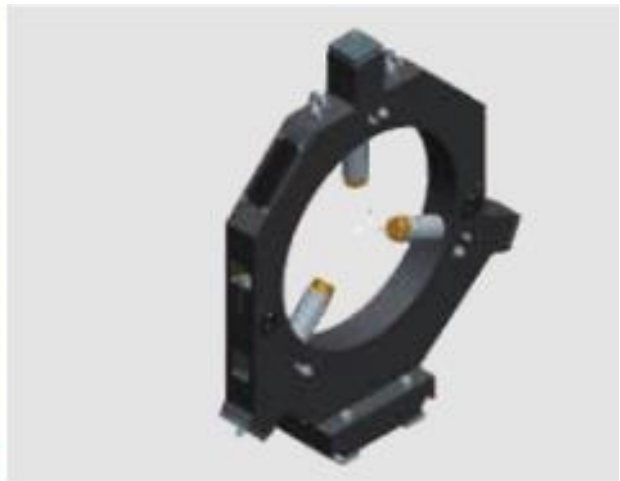
Options



Extended Boring Bar Holder



Open Top Steady Rest



Full Enclosed Steady Rest



The powerful FANUC Oi-TF PLUS control has a bundle software includes the multiple threading, built-in Canned cycle, spindle orientation, tool life management, program restart, are among the many standard features. An Ethernet connection, easy-access, front memory card slot, USB are among the many standard features also. This control provides the most popular function within his standard features. It is the most powerful and valuable control in his class.

Specification

Specification			
1	Controlled axis	Controlled axes	4
2		Axis control by PMC	●
3		Torque control	●
4		Inch/metric conversion	●
5		Stored limit check before move	●
6		Unexpected disturbance torque detection function	●
7		Position switch	●
8	Operation	DNC operation with memory card	●
9		Handle interruption	●
10		Manual handles retrace	○
11	Interpolation functions	Nano interpolation	●
12		Linear interpolation	●
13		Circular interpolation	●
14		Helical interpolation	X
15		Thread cutting, synchronous cutting	●
16		Thread cutting retract	●
17		Continuous threading	●
18	High-speed skip	Input signal is 8 points.	●
19	2nd reference position return	G30	●
20	Feed function	AI contour control I	○
21		AI contour control II	X
22		Rapid traverse block overlap	●
23	Program input	Optional block skip	9 pieces ○
24		Absolute/incremental programming	Combined use in the same block ●
25		Diameter/Radius programming	●
26		Automatic coordinate system setting	●
27		Workpiece coordinate system	G52 - G59 ●
28		Chamfering/Corner R	●
29		Custom macro	●
30	Addition of custom macro common variables	#100 - #199, #500 - #999 ●	

Neway CNC (USA), INC

9757 Stafford Centre Drive Stafford, Texas 77477.USA

Tel: 281-969-5800

Web: www.newaycnc.us

31		Interruption type custom macro		○
32		Canned cycle		●
33		Multiple repetitive cycles		●
34		Multiple repetitive cycles II	Pocket profile	●
35		Canned cycle for drilling		●
36		Coordinate system shift		●
37		Direct input of coordinate system shift		●
38		Pattern data input		○
39	Operation	Manual Guide i		X
40	Guidance Function	Manual Guide 0i		○
41	Auxiliary/ Spindle speed function	Constant surface speed control		●
42		Rigid tap		●
43		Arbitrary speed threading		○
44		Tool offset pairs	128-pairs	●
45		Tool offset pairs	200-pairs	X
46		Tool radius/Tool nose radius compensation		●
47		Tool geometry/wear compensation		●
48		Automatic tool offset		○
49		Direct input of offset value measured B		○
50		Tool life management		●
51	Accuracy compensation function	Backlash compensation for each rapid traverse and cutting feed		●
52		Stored pitch error compensation total value input		○
53	Editing operation	(Specify total of part program storage size of each path.)	2Mbyte	●
		Number of registerable programs	expansion 1 : Max. 1000 programs	●
54		Playback		●
55	Data input/ output	Fast data server		X
56		External data input		●
57		Memory card input/output		●
58		USB memory input/output		●
59		Automatic data backup		●
60	Interface function	Embedded Ethernet		●
61		Fast Ethernet		○
62	Others	Display unit	10.4" color LCD	●
63	Robot interface	Robot interface with PMC I/O module		○
64		Robot interface with PROFIBUS-DP/PROFINET-DP		○

● Standard ○ Option X N/A

Neway CNC (USA), INC
9757 Stafford Centre Drive Stafford, Texas 77477.USA
Tel: 281-969-5800 Web: www.newaycnc.us



Applications



Hydraulic valves



Windmill spindle shaft

Neway CNC (USA), INC
9757 Stafford Centre Drive Stafford, Texas 77477.USA
Tel: 281-969-5800 Web: www.newaycnc.us



State-of-the-Art Factory



Spindle precision grinding

Dynamic Balancing Test

Spindle temperature run-in Test



Neway CNC (USA), INC
9757 Stafford Centre Drive Stafford, Texas 77477.USA
Tel: 281-969-5800 Web: www.newaycnc.us



Machine Components

All NEWAY machines use world-wide famous and reliable brand.

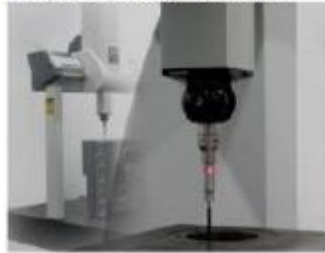


Neway CNC (USA), INC
 9757 Stafford Centre Drive Stafford, Texas 77477.USA
 Tel: 281-969-5800 Web: www.newaycnc.us

Quality Control

NEWAY inspection devices, all are world-wide famous and top one class. Such as coordinate measurement device is HEXAGON from Sweden, the roundness measuring device is MAHR from Germany, the ball bar tester and laser calibration are RENISHAW from the UK. All NEWAY machines must 100% pass our high standard inspection procedures before delivery.

Three-coordinate measuring device:
 Component accuracy measurement



Industry microscope

Profile measuring device:
 Work piece measurement



Roundness measuring device:
 Roundness measurement



All test reports include laser calibration, ball bar test, and test cut report in the USB flash disk come with the machine.

Laser interferometer:
 Positioning accuracy measurement



Ball bar: dynamic outline accuracy evaluation



Dynamic balancing



Spindle thermal test



Neway CNC (USA), INC

9757 Stafford Centre Drive Stafford, Texas 77477.USA

Tel: 281-969-5800

Web: www.newaycnc.us

TERMS AND CONDITIONS OF SALE

All orders for machines and other products (herein referred to as "Products") sold by Neway CNC (USA), INC. (herein referred to as "Seller") to Purchaser are sold upon the following terms and conditions of sale.

1. **DELIVERY.** Seller shall not be liable for delay in delivery caused by fires, floods, accidents, hazards or transportation, strikes, labor conditions, material shortage, including the delay of material from Seller's usual source of supply, federal and state legislation, and all other causes beyond Seller's control. In any such event, the date of delivery shall be correspondingly increased or extended. Purchaser assumes all risk of damage to or loss of the machine at any time after shipment from Seller's factory, and such damage or loss shall not operate in any way to release Purchaser from any of its obligations. Shipping dates are approximate and are subject to timely receipt of information. Every effort will be made to ship within the time estimated, but due to the nature of Seller's undertaking, notice is given that Seller shall have no liability for loss or damage (including incidental and consequential damages) resulting from Seller's delayed performance or shipment, for any reason whatsoever.

2. TAXES.

(a) Unless otherwise provided herein, all prices are exclusive of federal, state, local and other excise, sales, use, property, transportation, occupational and other taxes relating to the sale, now or hereafter imposed, together with penalties and expenses, all of which shall be paid by Purchaser. Purchaser shall be responsible for collecting and paying the taxes whether or not they are stated in any invoice for Products shipped and shall indemnify Seller concerning it. Seller, at its option, may, at any time separately bill Purchaser for any taxes not included in Seller's invoice and Purchaser shall pay said taxes, or in lieu thereof, shall provide Seller with a tax exemption certificate acceptable to the taxing authorities.

3. TERMS OF SALE AND DELINQUENCY CHARGE.

(a) Unless otherwise provided herein, shipment hereunder shall be FOB Port of Entry. Any additional conditions or specifications applying to the order must be stated on the face hereof.

(b) Partial shipment shall be accepted unless otherwise specifically agreed to in writing by Seller.

(c) Shipping dates are approximate only and are subject to timely receipt of all necessary information. Every effort will be made by Seller to ship within the time estimated, but due to the nature of Seller's undertaking, notice is given that Seller shall have no liability for loss or damage (including incidental or consequential damages) resulting from Seller's delayed performance or shipment for any reason whatsoever. In addition to the foregoing, if any shipment or delivery hereunder shall be delayed through the act or neglect of the carrier or any other person, including subcontractors and suppliers, or any embargo, hostility, war, civil disturbance, strike or other labor difficulties, shortages or inability to obtain raw materials, fuel, shipping space or transportation, fire, accident, government seizure or requisition, priorities which may be set by any government or its agencies, force majeure, or by reason of any cause whatsoever, whether domestic or foreign, whether direct or indirect, beyond the reasonable control of Seller, Seller shall not be responsible therefor and shipment and delivery may be postponed or canceled by Seller at its option without liability hereunder. In any such event, the date of delivery shall be correspondingly increased or extended. Risk of loss shall pass at the FOB point and is assumed by Buyers, and such damage or loss shall not operate in any way to release Buyer from any of its obligations under this Contract.

(d) Each shipment or delivery hereunder shall be construed and considered as a separate sale, and Purchaser agrees to accept and pay for each such shipment or delivery as provided herein. Should Purchaser fail to accept or pay for each shipment or delivery, Seller may, without prejudice to any other lawful remedy, defer further shipments or deliveries until acceptance hereof by Purchaser or payment is made by Purchaser, or at its option, Seller may without liability whatsoever terminate this Agreement as to any unaccepted or undelivered portion thereof, as well as any other outstanding agreement with Purchaser, and Purchaser shall be responsible for any expenses and/or losses sustained by Seller by so doing.

(e) Unless otherwise indicated herein all sums due Seller shall be due thirty (30) days after delivery of goods to the Purchaser. Seller reserves the right to charge one and one-half percent (1.5%) per month (but no more than the maximum percentage permitted by law) on all balances not paid by Purchaser within the designated net terms. Seller reserves the right at any time to revoke any credit extended to Purchaser because of Purchaser's failure to pay for any goods when due or for any other reason deemed good and sufficient by Seller. Seller shall make no sale or shipment of any Products to Purchaser on open account, or in any manner, if at any time the financial responsibility of the Purchaser becomes impaired or unsatisfactory to Seller, and the Purchaser does not provide full security to Seller, or if at time of such sale or shipment, Purchaser is delinquent in the payment of any account to Seller. In the event (a) Purchaser shall be in default of any of the terms and conditions hereof, (b) Purchaser becomes insolvent, (c) proceedings are instituted to declare Purchaser bankrupt, or (d) a receiver is appointed for Purchaser in any court, Seller may, at its option, terminate the Contract and upon such termination by Seller, any claims or demands against Purchaser held by Seller shall immediately become due and payable.

4. SECURITY INTEREST.

Purchaser hereby grants to Seller and Seller hereby retains a security interest in all of the Products and accessories or additions thereto sold by Seller and held by Purchaser, whether presently upon Purchaser's premises or after-acquired, all spare parts and components therefor, and all proceeds of their sale or other disposition, including but not limited to cash, accounts, contract rights, instruments and chattel paper. Purchaser shall join with Seller in executing one or more financing statements under the Uniform Commercial Code in force in the state of Purchaser's place of business in a form satisfactory to Seller to evidence Seller's security interest in the Products. Purchaser shall keep the Products free from any adverse lien, security interest or encumbrance and will not waste or destroy the Products or any part thereof or use the Products in violation of any statute or ordinance. In the event Purchaser shall be in default under this Contract, Seller shall have the remedies of a secured party under the Uniform Commercial Code in force in the State of Indiana. Seller may enter the premises of Purchaser and remove the Products or may require Purchaser to assemble the Products and make them available to Seller for repossession. Purchaser agrees to pay Seller's reasonable attorney's fees and costs for the collection of any amounts due hereunder or replevin of said Products.

5. ADDITIONAL CHARGES.

Except as otherwise explicitly provided herein, Seller shall not be responsible for freight, transportation, insurance, shipping, storage handling, demurrage or similar charges. If such costs are by the terms of sale included in a price, any increase in rates becoming effective after the date hereof shall be for the account of Purchaser.

6. LIMITATION OF WARRANTY.

Neway CNC (USA), INC

9757 Stafford Centre Drive Stafford, Texas 77477.USA

Tel: 281-969-5800

Web: www.newaycnc.us

(a) Except as otherwise explicitly provided herein, Seller warrants that the Product shall be free from defects in materials and workmanship for one year from the date that the Products are purchased.

(b) The warranty above is based upon one shift, eight (8) hour day use of the Products. If the Products are used in excess of the foregoing time limits, the warranty period shall be reduced proportionately (c) THE WARRANTY HEREIN CONTAINED IS instead of AND EXCLUDES IMPLIED WARRANTIES OF MERCHANTABILITY AND FITNESS FOR A PARTICULAR PURPOSE AND ALL OTHER WARRANTIES, EXPRESSED, IMPLIED OR STATUTORY. LIABILITY UNDER THIS WARRANTY SHALL BE LIMITED TO THE REPLACEMENT OR REPAIR AT ITS FACTORY (BUT NOT THE INSTALLATION) OF ANY DEFECTIVE PRODUCT AT SELLER'S OPTION. PARTS CLAIMED TO BE DEFECTIVE IN WARRANTY AND FOR WHICH REPAIR OR REPLACEMENT IS DESIRED SHALL BE, IF REQUESTED BY SELLER, RETURNED TRANSPORTATION PREPAID TO SELLER'S PLANT FOR INSPECTION. RESULTS OF ORDINARY WEAR AND TEAR, IMPROPER OPERATION OR MAINTENANCE, OR USE OF CORROSIVE OR ABRASIVE MATERIALS SHALL NOT BE CONSIDERED A DEFECT IN MATERIAL OR WORKMANSHIP. ANY PART MANUFACTURED BY ANOTHER IS NOT COVERED BY SELLER'S WARRANTY, BUT ONLY BY SUCH WARRANTY AS ITS MANUFACTURER GIVES. On the repair or replacement of a defective part, Seller's warranty will continue for the repaired or replacement part for the remainder of the one (1) year period for the original part.

7. LIMITATION OF REMEDY.

If any portion of the Products delivered to Purchaser is defective or otherwise not in accordance with contract specifications, Seller shall have the right in its discretion to either replace any defective part, or supply without charge FOB its works, a similar part to replace such defective part, or refund that portion of the purchase price applicable thereto. Seller shall have the option of requiring the return of these defective materials, transportation prepaid, to establish the claim. Seller and Purchaser acknowledge the Purchaser's sole and exclusive remedy against Seller shall be for the repair and replacement of defective parts as provided herein. IN NO EVENT, BE IT DUE TO A BREACH OF WARRANTY MADE IN CONNECTION WITH THIS AGREEMENT, THE NEGLIGENCE OF SELLER, OR NONPERFORMANCE OF THE PRODUCTS SOLD HEREUNDER, SHALL SELLER BE OBLIGATED OR LIABLE TO PURCHASER IN ANY MANNER FOR CONSEQUENTIAL OR INCIDENTAL DAMAGES, INCLUDING, BUT NOT LIMITED TO, LOST PROFITS, PLANT DOWNTIME, OR SUITS BY THIRD PARTIES.

8. INSTALLATION AND FIELD SERVICE.

Purchaser is to make, at his expense, all service connections necessary for operating the machine such as electricity, water, steam, and air. Seller will furnish a field serviceman to check final erection, instructing operators and starting the machine. Such service includes one (1) round trip from such base point as the Seller may determine and includes traveling and living expenses covering this specific period of service.

9. CANCELLATION OF ORDERS.

Purchaser shall not revoke or cancel any order or cause the work or shipment to be delayed, except with the written consent of, and upon terms agreed to by Seller, and with full compensation to Seller for any loss sustained because by reason of cancellation.

10. SAFETY PRECAUTIONS.

Purchaser shall require its employees to use all safety devices, guards, and proper safe operating procedures as set forth in manuals and instruction sheets furnished by Seller. Purchaser shall not remove or modify any such device, guard, or warning sign. It is the Purchaser's responsibility to provide all means that may be necessary to adequately protect all employees from serious bodily injury which otherwise may result from the method of particular use, operation, set up or service of the Products. The operator's or machine manual, ANSI safety standards, OSHA regulations, and other sources should be consulted. If Purchaser fails to comply with provisions of this paragraph or the applicable standards and regulations, and a person is injured as the result thereof, Purchaser agrees to indemnify and save Seller harmless from any liability or obligation incurred by Seller.

11. MISCELLANEOUS PROVISIONS.

(a) The foregoing comprises the Seller's and Purchaser's entire Agreement and constitutes the final expression of all terms of the Agreement between the Seller and Purchaser, and is a complete and exclusive statement of those terms. The provisions contained herein entirely supersede any prior oral or written correspondence, quotation or Agreement. There are no agreements between Seller and Purchaser concerning the Product herein except as set forth in writing and expressly made part of this Contract. Acceptance of this Contract is limited to the terms, conditions, specifications, and prices set forth herein or attached hereto and any additional terms, conditions specifications and prices are rejected by Seller unless expressly agreed to in writing by Seller.

(b) If any term or condition or a part contained herein is held invalid, the remaining terms and conditions of this Contract shall not be affected thereby.

(c) This Contract may be modified or rescinded only in writing signed by both parties or their duly authorized agents.

(d) No claim or right arising out of a breach of this Contract may be discharged in whole or in part by a waiver or renunciation of the claim or right unless the waiver or renunciation is in writing, signed by the aggrieved party.

(e) No delegation of any obligation owed, nor performance of any obligation by Purchaser shall be made without the written permission of Seller. Any attempted assignment or delegation shall be wholly void.

(f) All rights available to Seller under the Uniform Commercial Code, even though not specifically enumerated herein, are expressly reserved to Seller as remedies available to it in case of Purchaser's breach.

(g) This Contract shall be construed under the laws of the State of Texas.

12. This proposal and information contained herein are confidential and proprietary to Neway CNC (USA), INC. And maybe shared with customer personnel only, strictly on a need-to-know basis. Any disclosure of this document to a third party is expressly prohibited except as authorized in writing by Neway CNC (USA), INC

Neway CNC (USA), INC

9757 Stafford Centre Drive Stafford, Texas 77477.USA

Tel: 281-969-5800

Web: www.newaycnc.us



NEWAY CNC (USA). INC

9757 Stafford Centre Drive, Stafford, Texas 77477, USA

Tel: +1-281-969-5800 Fax: +1-281-969-5903

sales@newaycnc.us

www.newaycnc.us

