

FIBER LASER CUTTING MACHINE

Bodor welder photo

Trade Term

DDP



Freight&Tariff

Ship with Bodor Machine

Installation & Training Cost

Not Included

Transportation

By Sea

Loading Container

1 set, wooden box
≤24 sets, 20GP×1
≤72 sets, 40HQ×1

Payment Terms

100% before the Order

Warranty

18 months limited warranty for main parts.

Basic Parameter

| | |
|--------------------------------------|-------------------|
| Output Power | 1500W |
| Working mode | Continuous/Pulsed |
| Dimensions | 760mm×325mm×540mm |
| Overall weight | 55KG |
| Operating ambient temperature range | -20℃~60℃ |
| Operating environment humidity range | ≤90% |

Intelligent Function

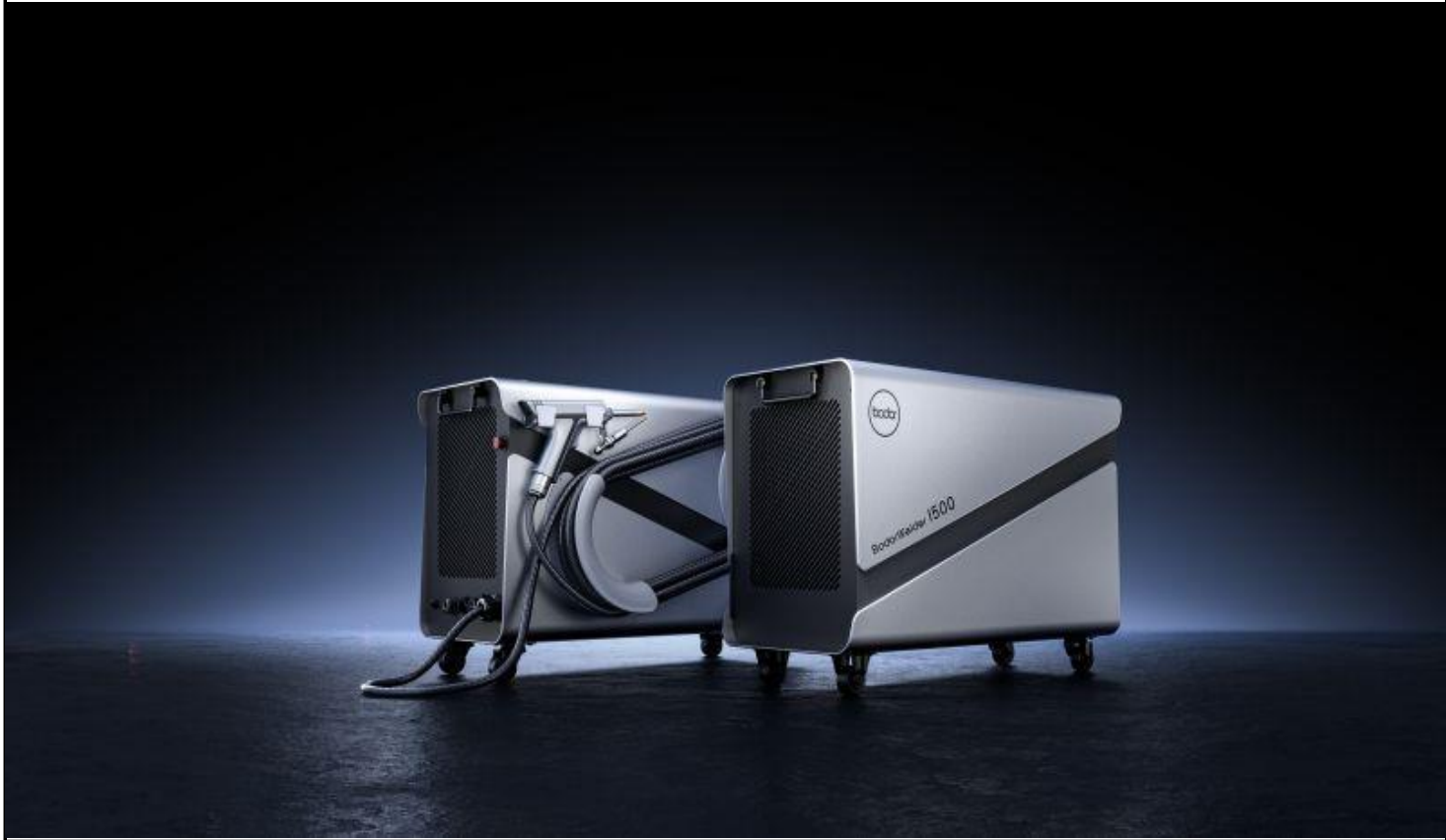
| | |
|--|---|
| Self-cooling - not afraid of high temperature and extreme cold | √ |
| Constant power continuous light output | √ |
| Smart control | √ |
| Laser welding process library | √ |

Performance

| | |
|--|--------------------------|
| Output power regulation range | 1%-100% |
| Power stability | < 3% |
| Maximum modulation frequency | 5k HZ |
| Indication of laser wavelength | 650nm |
| Indication of laser power adjustable range | < 1mW |
| Output laser wavelength | 1075nm±10nm |
| Laser response time | 10us |
| Interface type | QBH |
| Collimation focal length | 50mm |
| Focus focal length 150mm | 150mm |
| Length of optical fiber cable | 10m |
| Transmission length | Standard length 10m±0.5m |
| Output fiber core diameter | 50um |

| | |
|---------------------------------------|--|
| Bending radius of optical fiber cable | 175mm |
| Configuration | |
| laser head | Bodor |
| Laser source | Bodor |
| Wire feeder individually packed | Bodor |
| Maximum supported wire weight | 25KG |
| Cooling method | Self-cooling |
| Maximum supported wire feed diameter | 2mm |
| Control mode | Knob control |
| Laser protective glasses | √ |
| Copper muzzle box | Contains 7 copper nozzle,1cutting nozzle, 1 graduated tube |
| Total power capacity/current | 8.1KVA/21.1A |
| Length of optical fiber cable 5m | Optional |

Welder Photo





Cutting Samples



Packing Photos






Packing in Factory

In Container

In Container Yard

ABOUT BODOR

A company of over 2,000 people only focusing on fiber laser cutting machines.

| | |
|--|----------------------|
| Local Sales & Engineer Service team in American. | Leading Manufacturer |
| Over 150 backbone researchers only into laser field. | |
| Bodor Super Factory covers over 60, 000 m ² . | |
| Exports of fiber laser cutting machine are No.1 in China. | World Brand |
| Users of over 150 countries are happy with Bodor. | |
| Bodor gains patents and certifications (CSA, cTUVus, CE, FDA, ISO 9001, BV, SGS, etc.) | Honors |
| <div><div></div></div> | |
| Won the German IF Award at the International Industry Awards in 2019. Won the German Red Dot Award at the International Industry Awards in 2018. Won the China Red Star Design Award, National High-tech Zone Gazelle Enterprise in 2016. International awards 10+; industry awards 50+; patent certificates 130+. | |
| <div><div></div></div> | |
| Bodor China | |
|  | |
| Bodor USA | |

