

ITEM	DESCRIPTION	MODEL NUMBER	SERIAL NUMBER	REMARKS
1	MINSTER PRECISION STRAIGHT SIDE PRESS	P2H-100	27871	
2	MINSTER AUTOMATION SINGLE ROLL ELECTRIC FEED	MEF4-14	18-50331	SMOOTH CHROME ROLL FINISH & END OF STOCK DETECTOR
3	MINSTER AUTOMATION STRAIGHTENER	MS20-14-7	13-50151	ULTRASONIC LOOP CONTROL & CLASS 'A' LUBRICATION SYSTEM
4	MINSTER AUTOMATION DOUBLE REEL	MR6-14D	13-70204	NON-POWERED ADJUSTABLE BASE

ITEM DESCRIPTION REV'D.

NOTES:  
 1) ITEMS TO BE SUPPLIED BY USER:  
 TUBE FOR INTERCONNECTIONS, PIPE,  
 HOSES, CONDUIT & WIRE.

ELECTRICAL APPROXIMATIONS ARE AS FOLLOWS:

- A-B STRAIGHTENER ELECTRICAL PANEL TO STRAIGHTENER ELECTRICAL TERMINAL BOX 2 1/2" CONDUIT (AC) 1 1/2" CONDUIT (DC)
- A-C STRAIGHTENER ELECTRICAL PANEL TO FEED ELECTRICAL PANEL 1 1/2" CONDUIT
- A-F STRAIGHTENER ELECTRICAL PANEL TO ULTRASONIC LOOP CONTROL ELECTRICAL TERMINAL BOX 1" CONDUIT
- A-G STRAIGHTENER ELECTRICAL PANEL TO REEL ELECTRICAL TERMINAL BOX 1 1/2" CONDUIT
- C-D FEED ELECTRICAL PANEL TO FEED ELECTRICAL TERMINAL BOX 1 1/2" CONDUIT
- C-E FEED ELECTRICAL PANEL TO PRESS ELECTRICAL PANEL 1 1/2" CONDUIT

----- INDICATES ELECTRICAL SUPPLY LINES  
 - - - - - INDICATES PNEUMATIC SUPPLY LINES  
 --HZ-- INDICATES HAZARDOUS AREAS BARRIER GUARDING SUPPLIED BY USER

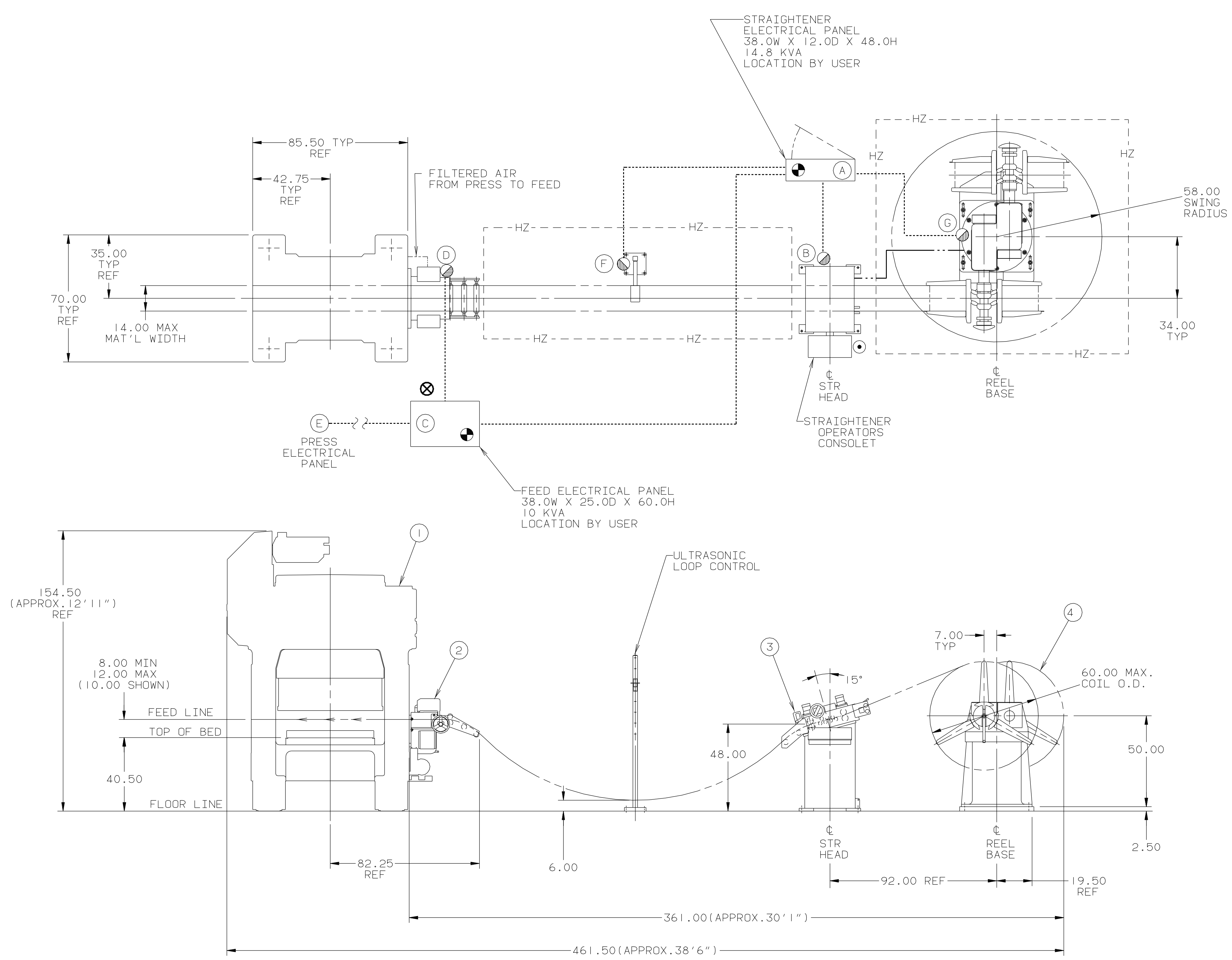
- ⊕ INDICATES ELECTRICAL DROP 220V-3Ø-60HZ
- ⊙ INDICATES 80 PSI, 1/2 NPT
- ⊗ INDICATES OPERATOR
- ⊚ INDICATES ELECTRICAL TERMINAL BOX

2) FOUNDATION ENGINEERING IS RESPONSIBILITY OF USER

LINE DATA

LINE DIRECTION: RIGHT-LEFT  
 LINE SPEED (I.P.M): 120-1200  
 MAX STOCK WIDTH: 14"  
 MIN STOCK THICKNESS: .006"  
 MAX STOCK THICKNESS @ FULL WIDTH: .120"  
 MAX STOCK THICKNESS: .187"  
 MAX STOCK WIDTH @ FULL THICKNESS: 4"  
 MAX COIL WEIGHT: 6,000 LBS  
 COIL I.D. RANGE: 16-20"  
 LOOP SIZE IS BASED ON .187" STOCK THICKNESS  
 LOOP STORAGE AVAILABLE: 23" APPROX.

NOTE: ALL LINE DATA IS CALCULATED FOR MILD STEEL

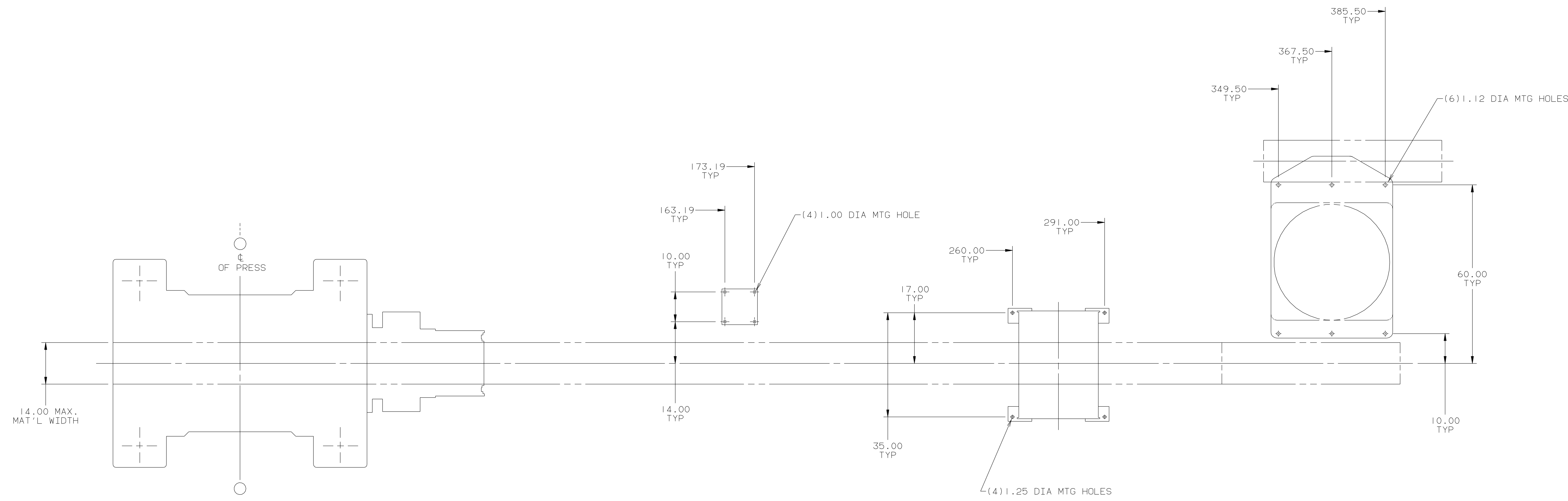


**X CERTIFIED**

ISSUED BY (ENG)/DATE:	IDS/07-07-92
ISSUE TO CUSTOMER/DATE:	RHL/07-07-92
CUSTOMER NAME:	INDUSTRIAL TOOL & DIE CO. INC.
CUSTOMER ORDER#:	1680
MINSTER ORDER#:	27871
REG. SALES MGR.:	DAVID C. WINCH
--- CUSTOMER TO RETURN APPROVED FLOOR PLAN TO --- MINSTER AUTOMATION WITHIN 7 DAYS	

**CUSTOMER APPROVED BY: MICHAEL TOFTE**  
**CUSTOMER APPROVAL DATE: 07-09-92**

EST. WEIGHT	RAW MATERIAL WEIGHT	MACHINED SURFACES UNLESS OTHERWISE SPECIFIED	DIMENSION TOLERANCE	DATE	SCALE	LAST REV. DATE
				06-30-92	.031	08-07-92
GROUP TECH NO				DRWN BY	CHKD BY	CHANGED BY
REFERENCE NO				IDS	RHL	IDS
SUPERSEDED BY				DATE	SCALE	
SUPERSEDES				06-30-92	.031	
PATTERN FILE NO				NAME OF PART		
PATTERN BASIC NO				L/O, FLOOR PLAN		
				MATERIAL	PART NO	
					SHEET 1 OF 2	
				NO. REV'D	PART NO	
				1	1166-214	



NOTE:  
1) ANCHOR BOLTS SUPPLIED BY USER

EST. WEIGHT	RAW MATERIAL WEIGHT	MACHINED SURFACES UNLESS OTHERWISE SPECIFIED	<b>THE MINSTER MACHINE CO.</b>		LAST REV. DATE
GROUP TECH NO		DIMENSION TOLERANCE 1	MINSTER, OHIO	REV. LEVEL	08-07-92
REFERENCE NO		X AND X X 0 1.00		CHANGED BY	IDS
		X XXX 0 0.10	<small>© 1992 THE MINSTER MACHINE COMPANY. THIS DOCUMENT IS THE EXCLUSIVE PROPERTY OF THE MINSTER MACHINE COMPANY. ANY DISCLOSURE, DISTRIBUTION AND/OR REPRODUCTION WITHOUT THE EXPRESS WRITTEN CONSENT OF THE MINSTER MACHINE COMPANY IS PROHIBITED. ALL RIGHTS RESERVED.</small>		
		X XXXX 0 0.01			
		FINISH 125 MICROINCHES			
		BREAK SHARP CORNERS 0.03			
SUPERSEDED BY		DATE	06-30-92	DRAWN BY	IDS
SUPERSEDES		DATE		CHECKED BY	RHL
		SCALE			.062
PATTERN FILE NO		NAME OF PART	L/O, FLOOR PLAN		
PATTERN BASIC NO		MATERIAL			
		PART NO	SHEET 2 OF 2		
		NO. REV'D	D	PART NO	1166-214