


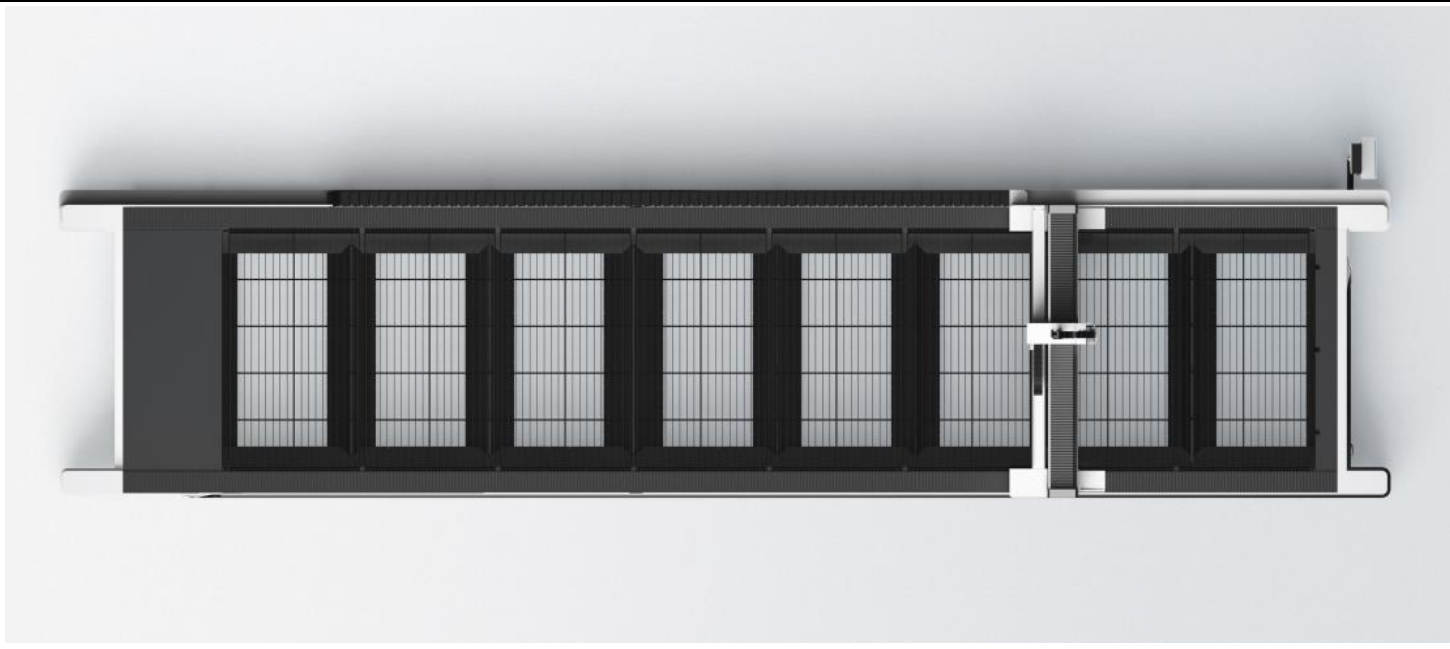
FIBER LASER CUTTING MACHINE

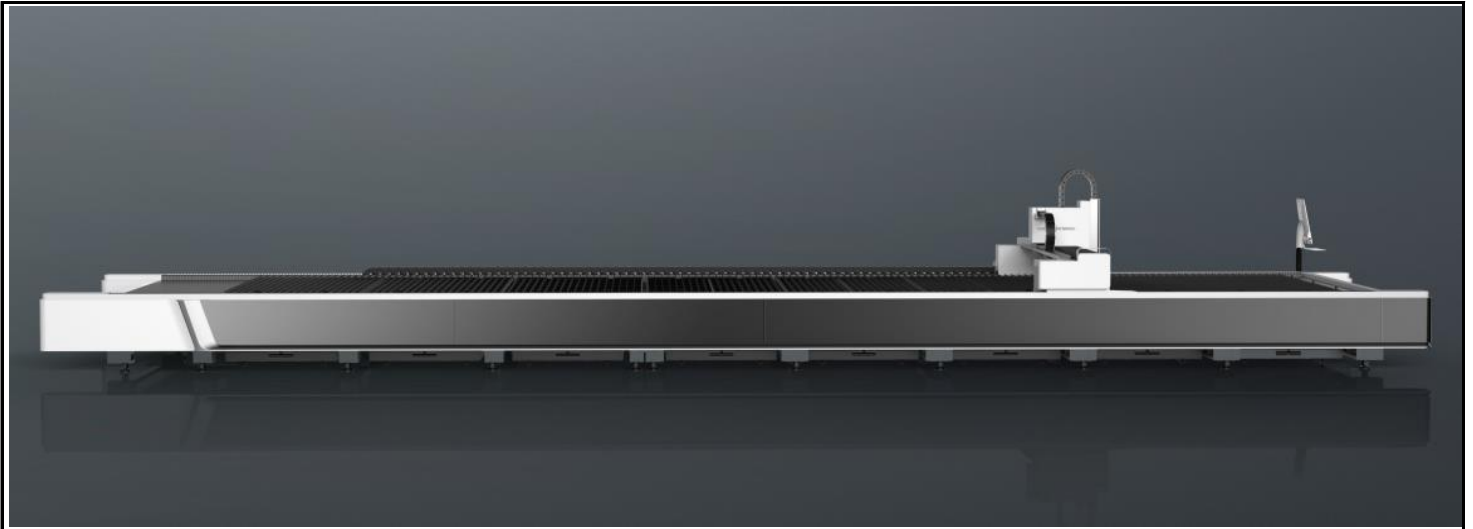
A12 Photo	Laser Power	
	30kw	
Centrifugal Fan	Included	
Freight&Tariff	Included	
Installation & Training Cost	Included	
Transportation	By Sea	
Loading Container	1*40'FR+1*40'HQ	
Payment Terms	30% down payment, 70% before shipment.	
Warranty	Five years limited warranty for main parts. One year free labor.	
Optional		
Fume Filter		
Air Compressor	12KW、22KW、24KW	
	30KW、	
Basic Parameter		
Working area	12200mm*2500mm (≈ 40'x8.2')	
Max. linkage speed	100m/min (328ft/min)	
Intelligent Function		
Bodor Lightning perforation technology	Yes	
High Speed Cutting Expert Database	Yes	
Remnant Typesetting	Yes	
Air pressure intelligent control	Yes	
Automatic adjustment of cutting gas pressure	O2、N2、air	
Gas filtration alarm device	Yes	
Auto-focus of laser head	Yes	
Laser cutting technology expert database	Yes	
Ergonomic Remote Control (Bodor Mango®)	Yes	
Active anti-collision function	Yes	
Intelligent anti-shake of sheet edge	Yes	
High quality Cutting Expert Database	Yes	
Anti-slag Protection	Yes	
Mineral casting anti burning	Yes	

Gas-saving steady flow nozzle	Yes
Automatic lubrication	Yes
Intelligent maintenance reminder	Yes
WiFi internet connection	Yes
Bodor Cloud sevice	Yes
Performance	
Requirements for sheet	Plate thickness \geq 0.8mm
Max. acceleration	1.5G
Table load bearing	5993KG(1-6KW) 7182kg(12KW) 9589KG(22-30KW)
Machine overall dimensions	15077mm*3950mm*1830mm (\approx 49.5'x13'x6')
Overall weight	10193kg
Z axis travel	100mm (\approx 3.9")
Positioning accuracy	\pm 0.05mm/m
Repositioning accuracy	\pm 0.03mm
Φ 30mm roundness	\leq 0.15mm
<input type="checkbox"/> 30mm adjacent side dimension difference	\leq 0.06mm
<input type="checkbox"/> 190mm adjacent side dimension difference	\leq 0.15mm
<input type="checkbox"/> 190mm diagonal size difference	\leq 0.20mm
Configuration	
Laser source	Bodor Power
Laser head	BodorGenius
Machine bed	Mortise-and-tenon structure bed
Gantry structure	Stretched Aluminum gantry
Linear Rails	Bodor
Rack	Bodor
X-axis、Y-axis、Z-axis、A-axis Servo motor and driver	Bodor
Integral aluminum cantilever for high pressure steel mould casting	Yes
Control system	Bodor Thinker
Display size	21.5 inches
System identification file format	DXF、DWG、PLT、NC、G file
Intelligent alarm	Yes
Water Chiller	Yes
Power Requirements	220V/440V/480V 60HZ 3PHASE (Up to Clients Power Requirement)
Total power capacity/current with 60KW source (380V)	325.0kVA/493.8A
Total power capacity/current with 40KW source (380V)	245.5kVA/373.0A
Total power capacity/current with 30KW source (380V)	190.5kVA/289.4A
Total power capacity/current with 24KW source (380V)	155.5kVA/236.3A

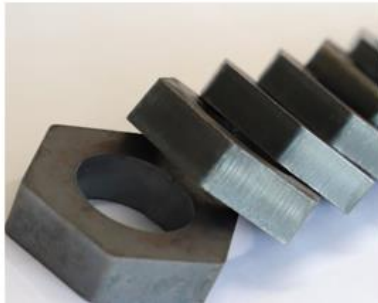
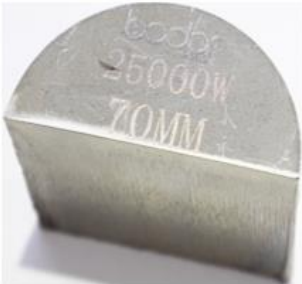
Total power capacity/current with 22KW source (380V)	148.0kVA/224.9A
Total power capacity/current with 20KW source (380V)	146.8kVA/223.0A
Total power capacity/current with 12KW source (380V)	100.5kVA/152.7A
Total power capacity/current with 6KW source (380V)	61.8KVA/94.0A

A12 Photo





Cutting Samples



Key Configuration Photos



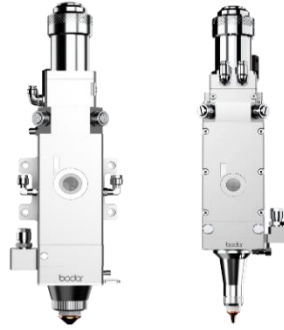
Mortise-and-tenon welding structure machine bed

Stretched Aluminum Gantry

21.5 inches Display



BodorPower Laser Source



BodorGenius Laser Cutting Head



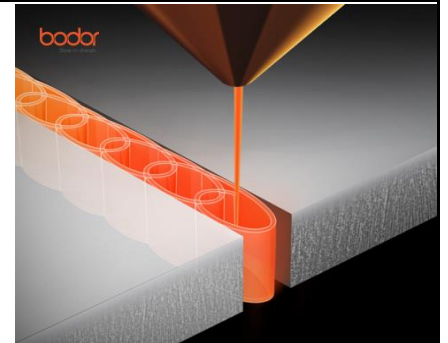
BodorThinker Control System



Air Compressor (Optional)



Fume Filter (Optional)



Scanning Cutting (Optional)

Cutting Parameters

Material	Power	Thickness (mm)	Thickness (mm)																								
			1	2	3(1/8")	4	5	6(1/4")	8	10	12(1/2")	14	16	18	20	25(1")	30	35	40	45	50(2")	60	70	80	90	100(4")	110
Carbon steel (Q235A) Q2	50kW	speed m/min	9-11	5-7.5	3.5-5.5	3.5-6	3.3-4.8	3-4.5	2.5-3.6	2.2-2.8	1.6-2.1	1.6-2.0	1.5-2.0	1.4-2.0	1.5-1.9	1.0-1.6	1.1-1.4	0.9-1.1	1.0-1.2	0.9-1.1	0.6-1.0	0.4-0.8	0.3-0.5	0.2-0.3	0.2-0.3	0.1-0.2	
	30kW		9-11	5-7.5	3.5-5.5	3.5-6	3.3-4.8	3-4.5	2.5-3.6	2.2-2.8	1.6-2.1	1.6-2.0	1.5-2.0	1.4-2.0	1.5-1.9	1.0-1.6	1.1-1.4	0.9-1.1	0.8-1.0	0.5-0.9	0.4-0.8	0.2-0.6	0.2-0.3	0.2-0.3	0.1-0.2		
	22kW		9-11	5-7.5	3.5-5.5	3.5-6	3.3-4.8	3.0-4.2	2.5-3.5	2.0-2.7	1.6-2.1	1.5-2.0	1.4-2.0	1.4-2.0	1.5-1.9	1.0-1.6	0.8-1.4	0.6-1	0.5-0.9	0.3-0.5	0.2-0.5	0.2-0.3	0.1-0.3				
	12kW		9-11	5-7.5	3.5-5.5	3.5-6	3.3-4.8	3.0-4.2	2.5-3.5	2.2-2.7	1.2-2.1	1.7-1.9	1.2-1.7	1.0-1.8	0.6-1.5	0.5-1.2	0.3-1.0	0.3-0.7	0.2-0.4	0.2-0.3	0.15-0.25						
	6000W		8-10	5-7.5	3.5-5	3.0-4.5	3.0-4.2	2.5-3.5	2.2-3.2	1.8-2.5	1.2-2.1	1.2-1.8	0.8-1.5	0.6-1.2	0.5-0.8	0.3-0.55	0.2-0.3										
	3000W		8.0-10	5.5-7.5	3.0-4.0	2.8-3.5	2.6-3.2	2.5-2.6	1.6-1.8	1.4-1.6	1.0-1.4	0.8-0.9	0.7-0.8	0.6-0.7	0.5-0.6												
Stainless steel (201) N2	50kW	speed m/min	72-100	60-75	45-65	35-45	30-35	25-30	25-30	18-22	16-18	11-15	11-13	9-11	8-10	6-7	4-5	2.8-3.5	2-2.5	1-1.5	0.6-1	0.4-0.6	0.35-0.5	0.2-0.4	0.2-0.3	0.1-0.2	0.1-0.2
	30kW		72-100	50-75	38-55	30-40	25-32	20-29	15-20	12-17	9-14	7-11	5-9	3-8	3-7	2-4.5	1.5-3.2	1.0-1.5	0.8-1.7	0.6-1.0	0.25-0.5	0.2-0.3	0.17-0.3	0.15-0.3	0.1-0.2	0.07-0.1	0.07-0.1
	22kW		72-100	50-75	38-55	25-35	24-32	20-25	15-19	10-13.5	8.0-10	6.0-8.5	4.0-6.0	3.0-3.5	2.0-3.0	1.5-2.2	1.2-1.5	0.4-0.8	0.3-0.6	0.2-0.6	0.2-0.5	0.1-0.3	0.1-0.3	0.1-0.3	0.1-0.2		
	12kW		70-85	40-65	35-45	20-32	18-25	12-15	8-12	6.0-8.0	4.0-5.5	3.0-5.0	2.2-2.8	1.2-2.0	1.0-1.6	0.5-0.8	0.3-0.6	0.3-0.5	0.3-0.5	0.2-0.4	0.1-0.2						
	6000W		42-52	20-33	15-22	10-15	7.0-12	4.8-9.0	3.0-4.0	1.6-2.5	0.8-1.5	0.6-1.2	0.5-1.0	0.4-0.8	0.3-0.6	0.2-0.4											
	3000W		30-55	12-30	6.0-10.0	4.0-6.0	3.0-5.0	2.0-3.2	1.0-1.8	0.5-0.85	0.4-0.5																
Aluminum N2	50kW	speed m/min	70-100	40-70	35-60	30-45	22-35	18-32	12-23	7-16	4.5-12	3-8	2.5-6	1.8-2.2	1.5-2	0.8-1.5	0.6-1.2	0.4-0.9	0.4-0.6	0.4-0.5	0.3-0.4	0.2-0.4	0.1-0.3	0.1-0.3	0.1-0.2	0.1-0.2	
	30kW		70-100	40-70	35-60	30-45	22-35	18-32	12-23	7-16	4.5-12	3-8	2.5-6	1.8-2.2	1.5-2	0.8-1.5	0.6-1.2	0.4-0.9	0.4-0.6	0.4-0.5	0.3-0.4	0.2-0.4	0.1-0.3	0.1-0.3	0.1-0.2	0.1-0.2	
	22kW		70-100	40-70	35-60	30-43	22-35	18-28	12-20	7.0-12.0	4.5-6.5	3.0-4.0	2.5-3.5	1.8-2.2	1.5-2.0	0.8-1.5	0.6-1.2	0.4-0.9	0.3-0.5	0.3-0.4	0.2-0.4	0.2-0.4	0.1-0.3				
	12kW		60-85	38-60	30-40	20-30	15-25	10-15	7.0-12	4.5-8.0	4.0-5.0	1.8-2.7	1.5-2.5	1.0-1.8	0.9-1.5	0.6-0.9	0.3-0.8	0.3-0.6	0.3-0.4	0.2-0.3	0.1-0.2						
	6000W		42-55	20-40	15-25	9.5-12	5.0-8.0	3.8-5.0	2.0-2.5	1.0-1.5	0.8-1.3	0.9-1.2	0.5-0.8	0.5-0.7	0.3-0.5												
	3000W		25-30	13-20	6.5-7.5	3.5-5.0	2.5-3.5	1.5-2.5	0.7-1.0																		
Brass N2	50kW	speed m/min	65-75	40-60	30-45	25-38	22-31	15-25	12-18	8-14	5-10	4.5-8.5	4-6.5	3-5.5	2-4	1.5-3	1-1.5	0.5-1	0.5-0.8								
	30kW		65-75	40-60	30-45	25-38	22-31	15-25	12-18	8-14	5-10	4.5-8.5	4-6.5	3-5.5	2-4	1.5-3	1-1.5	0.5-1	0.5-0.8								
	22kW		65-75	40-60	25-40	20-35	20-28	12-20	9.0-12	6.0-10	3.0-4.5	1.8-4.0	1.5-3.0	1.0-2.5	0.4-2.0	0.3-0.5	0.2-0.4	0.1-0.2									
	12kW		55-65	38-42	18-30	15-20	10-15	6.0-8.0	5.0-7.0	4.5-6.0	2.4-4.0	0.8-1.5	0.6-1.2	0.4-0.6	0.3-0.5												
	6000W		35-45	20-30	12-18	8.0-12.0	6.0-8.0	3.0-6.5	1.6-2.2	0.8-1.2	0.3-0.5	0.3-0.5															
	3000W		20-30	6.0-10	3.0-8.0	2.5-4.0	1.5-2.0	1.0-1.8																			

Packing Photos



Packing in Factory



In Container



In Container Yard

ABOUT BODOR

A company of over 2,000 people only focusing on fiber laser cutting machines.

Local Sales & Engineer Service team in American.

Over 150 backbone researchers only into laser field.

Bodor Super Factory covers over 60, 000 m².

Exports of fiber laser cutting machine are No.1 in China.

Users of over 150 countries are happy with Bodor.

Bodor gains patents and certifications (CSA, cTUVus, CE, FDA, ISO 9001, BV, SGS, etc.)



Won the German IF Award at the International Industry Awards in 2019. Won the German Red Dot Award at the International Industry Awards in 2018. Won the China Red Star Design Award, National High-tech Zone Gazelle Enterprise in 2016. International awards 10+; industry awards 50+; patent certificates 130+.



Leading Manufacturer

World Brand

Honors

Bodor China



Bodor USA

