


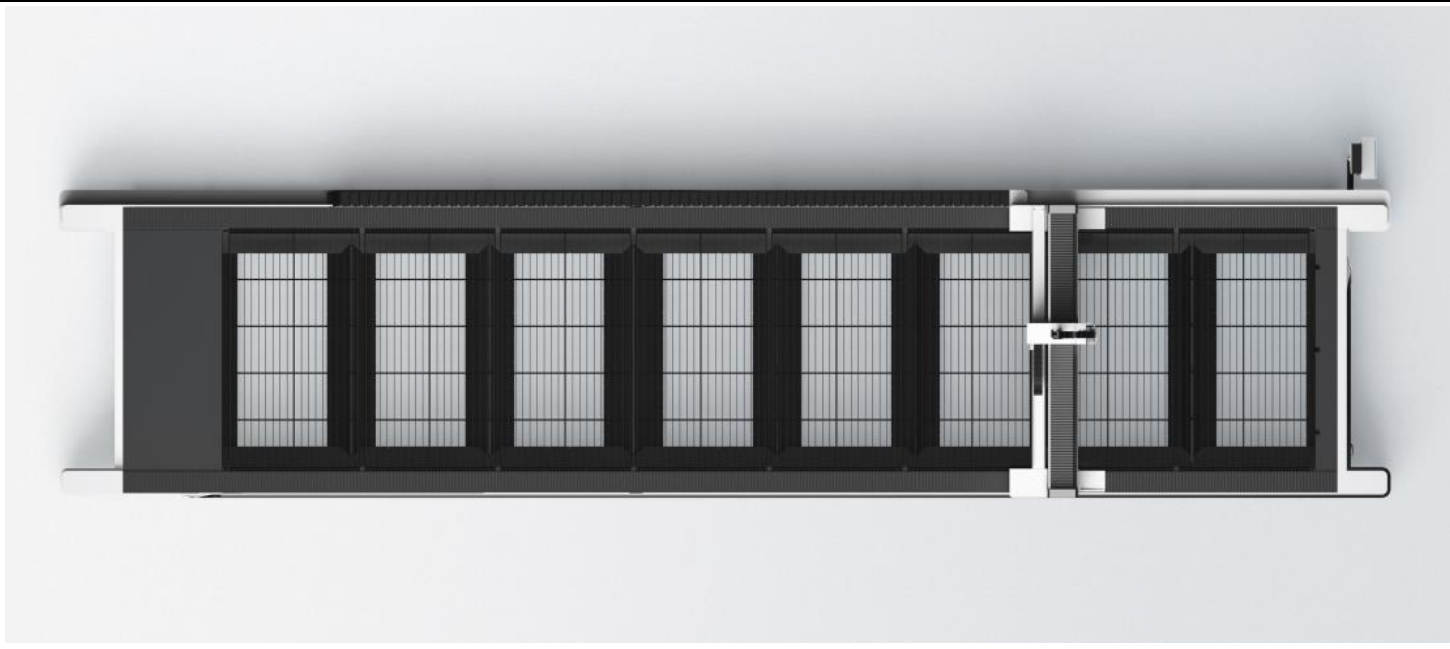
## FIBER LASER CUTTING MACHINE

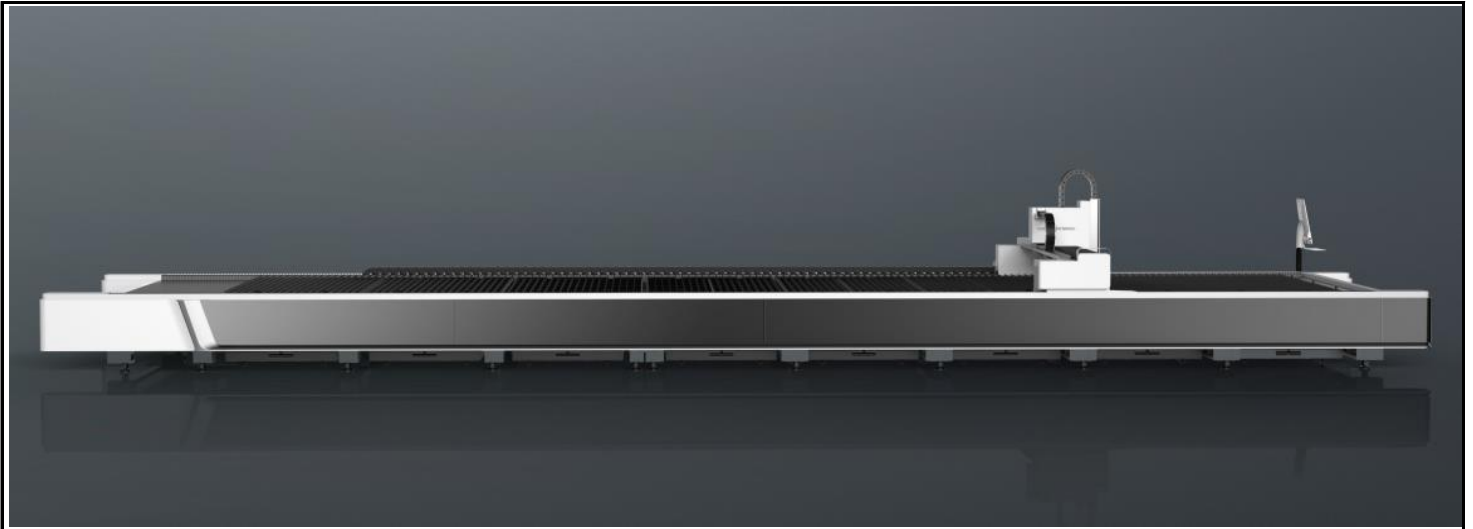
|  |   |  |
|--|---|--|
| <b>A12 Photo</b>   | <b>Laser Power</b>  |  |
|  | 60kw  |  |
| <b>Centrifugal Fan</b>   | <b>Included</b>   |  |
| <b>Freight&amp;Tariff</b>  | <b>Included</b>   |  |
| <b>Installation &amp; Training Cost</b>  | <b>Included</b>   |  |
| <b>Transportation</b>  | <b>By Sea</b>   |  |
| <b>Loading Container</b>   | <b>1*40'FR+1*40'HQ</b>  |  |
| <b>Payment Terms</b>   | <b>30% down payment, 70% before shipment.</b>                           |  |
| <b>Warranty</b>  | <b>Five years limited warranty for main parts. One year free labor.</b> |  |
| <b>Optional</b>  |   |  |
| <b>Fume Filter</b>   |   |  |
| <b>Air Compressor</b>  | 12KW、22KW、24KW  |  |
|  | 30KW、   |  |
| <b>Basic Parameter</b>   |   |  |
| Working area   | 12200mm*2500mm (≈ 40'x8.2')   |  |
| Max. linkage speed   | 100m/min (328ft/min)  |  |
| <b>Intelligent Function</b>  |   |  |
| Bodor Lightning perforation technology   | Yes   |  |
| High Speed Cutting Expert Database   | Yes   |  |
| Remnant Typesetting  | Yes   |  |
| Air pressure intelligent control   | Yes   |  |
| Automatic adjustment of cutting gas pressure                                     | O2、N2、air   |  |
| Gas filtration alarm device  | Yes   |  |
| Auto-focus of laser head   | Yes   |  |
| Laser cutting technology expert database   | Yes   |  |
| Ergonomic Remote Control (Bodor Mango®)  | Yes   |  |
| Active anti-collision function   | Yes   |  |
| Intelligent anti-shake of sheet edge   | Yes   |  |
| High quality Cutting Expert Database   | Yes   |  |
| Anti-slag Protection   | Yes   |  |
| Mineral casting anti burning   | Yes   |  |

|  |  |
|--|--|
| Gas-saving steady flow nozzle                                      | Yes  |
| Automatic lubrication  | Yes  |
| Intelligent maintenance reminder                                   | Yes  |
| WiFi internet connection   | Yes  |
| Bodor Cloud sevice   | Yes  |
| <b>Performance</b>   |  |
| Requirements for sheet   | Plate thickness $\geq$ 0.8mm                                 |
| Max. acceleration  | 1.5G   |
| Table load bearing   | 5993KG(1-6KW)<br>7182kg(12KW)<br>9589KG(22-30KW)             |
| Machine overall dimensions   | 15077mm*3950mm*1830mm ( $\approx$ 49.5'x13'x6')              |
| Overall weight   | 10193kg  |
| Z axis travel  | 100mm ( $\approx$ 3.9")                                      |
| Positioning accuracy   | $\pm$ 0.05mm/m   |
| Repositioning accuracy   | $\pm$ 0.03mm   |
| $\Phi$ 30mm roundness  | $\leq$ 0.15mm  |
| <input type="checkbox"/> 30mm adjacent side dimension difference   | $\leq$ 0.06mm  |
| <input type="checkbox"/> 190mm adjacent side dimension difference  | $\leq$ 0.15mm  |
| <input type="checkbox"/> 190mm diagonal size difference            | $\leq$ 0.20mm  |
| <b>Configuration</b>   |  |
| Laser source   | Bodor Power  |
| Laser head   | BodorGenius  |
| Machine bed  | Mortise-and-tenon structure bed                              |
| Gantry structure   | Stretched Aluminum gantry                                    |
| Linear Rails   | Bodor  |
| Rack   | Bodor  |
| X-axis、Y-axis、Z-axis、A-axis Servo motor and driver                 | Bodor  |
| Integral aluminum cantilever for high pressure steel mould casting | Yes  |
| Control system   | Bodor Thinker  |
| Display size   | 21.5 inches  |
| System identification file format                                  | DXF、DWG、PLT、NC、G file  |
| Intelligent alarm  | Yes  |
| Water Chiller  | Yes  |
| Power Requirements   | 220V/440V/480V 60HZ 3PHASE (Up to Clients Power Requirement) |
| Total power capacity/current with 60KW source (380V)               | 325.0kVA/493.8A  |
| Total power capacity/current with 40KW source (380V)               | 245.5kVA/373.0A  |
| Total power capacity/current with 30KW source (380V)               | 190.5kVA/289.4A  |
| Total power capacity/current with 24KW source (380V)               | 155.5kVA/236.3A  |

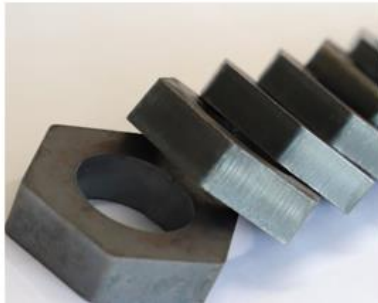
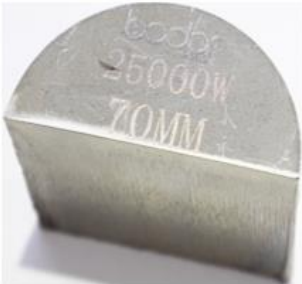
|  |                 |
|--|-----------------|
| Total power capacity/current with 22KW source (380V) | 148.0kVA/224.9A |
| Total power capacity/current with 20KW source (380V) | 146.8kVA/223.0A |
| Total power capacity/current with 12KW source (380V) | 100.5kVA/152.7A |
| Total power capacity/current with 6KW source (380V)  | 61.8KVA/94.0A   |

**A12 Photo**





**Cutting Samples**



**Key Configuration Photos**



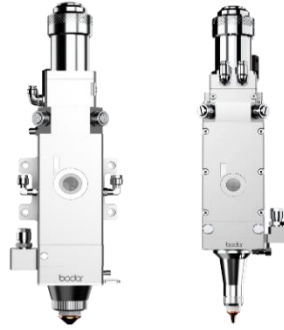
**Mortise-and-tenon welding structure machine bed**

**Stretched Aluminum Gantry**

**21.5 inches Display**



**BodorPower Laser Source**



**BodorGenius Laser Cutting Head**



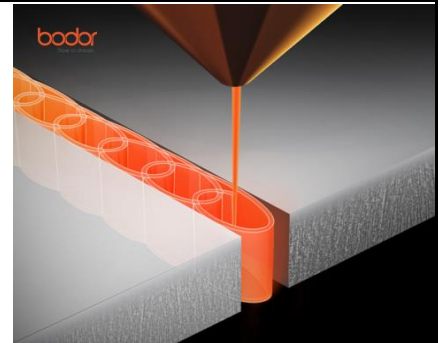
**BodorThinker Control System**



**Air Compressor (Optional)**



**Fume Filter (Optional)**



**Scanning Cutting (Optional)**

**Cutting Parameters**

| Material                 | Power | Thickness (mm) | Thickness (mm) |         |          |          |         |         |         |          |          |         |         |         |         |          |         |         |         |         |           |         |          |          |         |          |          |
|--------------------------|-------|----------------|----------------|---------|----------|----------|---------|---------|---------|----------|----------|---------|---------|---------|---------|----------|---------|---------|---------|---------|-----------|---------|----------|----------|---------|----------|----------|
|                          |       |                | 1              | 2       | 3(1/8")  | 4        | 5       | 6(1/4") | 8       | 10       | 12(1/2") | 14      | 16      | 18      | 20      | 25(1")   | 30      | 35      | 40      | 45      | 50(2")    | 60      | 70       | 80       | 90      | 100(4")  | 110      |
| Carbon steel (Q235A) Q2  | 50kW  | speed<br>m/min | 9-11           | 5-7.5   | 3.5-5.5  | 3.5-6    | 3.3-4.8 | 3-4.5   | 2.5-3.6 | 2.2-2.8  | 1.6-2.1  | 1.6-2.0 | 1.5-2.0 | 1.4-2.0 | 1.5-1.9 | 1.0-1.6  | 1.1-1.4 | 0.9-1.1 | 1.0-1.2 | 0.9-1.1 | 0.6-1.0   | 0.4-0.8 | 0.3-0.5  | 0.2-0.3  | 0.2-0.3 | 0.1-0.2  |          |
|                          | 30kW  |                | 9-11           | 5-7.5   | 3.5-5.5  | 3.5-6    | 3.3-4.8 | 3-4.5   | 2.5-3.6 | 2.2-2.8  | 1.6-2.1  | 1.6-2.0 | 1.5-2.0 | 1.4-2.0 | 1.5-1.9 | 1.0-1.6  | 1.1-1.4 | 0.9-1.1 | 0.8-1.0 | 0.5-0.9 | 0.4-0.8   | 0.2-0.6 | 0.2-0.3  | 0.2-0.3  | 0.1-0.2 |          |          |
|                          | 22kW  |                | 9-11           | 5-7.5   | 3.5-5.5  | 3.5-6    | 3.3-4.8 | 3.0-4.2 | 2.5-3.5 | 2.0-2.7  | 1.6-2.1  | 1.5-2.0 | 1.4-2.0 | 1.4-2.0 | 1.5-1.9 | 1.0-1.6  | 0.8-1.4 | 0.6-1   | 0.5-0.9 | 0.3-0.5 | 0.2-0.5   | 0.2-0.3 | 0.1-0.3  |          |         |          |          |
|                          | 12kW  |                | 9-11           | 5-7.5   | 3.5-5.5  | 3.5-6    | 3.3-4.8 | 3.0-4.2 | 2.5-3.5 | 2.2-2.7  | 1.2-2.1  | 1.7-1.9 | 1.2-1.7 | 1.0-1.8 | 0.6-1.5 | 0.5-1.2  | 0.3-1.0 | 0.3-0.7 | 0.2-0.4 | 0.2-0.3 | 0.15-0.25 |         |          |          |         |          |          |
|                          | 6000W |                | 8-10           | 5-7.5   | 3.5-5    | 3.0-4.5  | 3.0-4.2 | 2.5-3.5 | 2.2-3.2 | 1.8-2.5  | 1.2-2.1  | 1.2-1.8 | 0.8-1.5 | 0.6-1.2 | 0.5-0.8 | 0.3-0.55 | 0.2-0.3 |         |         |         |           |         |          |          |         |          |          |
|                          | 3000W |                | 8.0-10         | 5.5-7.5 | 3.0-4.0  | 2.8-3.5  | 2.6-3.2 | 2.5-2.6 | 1.6-1.8 | 1.4-1.6  | 1.0-1.4  | 0.8-0.9 | 0.7-0.8 | 0.6-0.7 | 0.5-0.6 |          |         |         |         |         |           |         |          |          |         |          |          |
| Stainless steel (201) N2 | 50kW  | speed<br>m/min | 72-100         | 60-75   | 45-65    | 35-45    | 30-35   | 25-30   | 25-30   | 18-22    | 16-18    | 11-15   | 11-13   | 9-11    | 8-10    | 6-7      | 4-5     | 2.8-3.5 | 2-2.5   | 1-1.5   | 0.6-1     | 0.4-0.6 | 0.35-0.5 | 0.2-0.4  | 0.2-0.3 | 0.1-0.2  | 0.1-0.2  |
|                          | 30kW  |                | 72-100         | 50-75   | 38-55    | 30-40    | 25-32   | 20-29   | 15-20   | 12-17    | 9-14     | 7-11    | 5-9     | 3-8     | 3-7     | 2-4.5    | 1.5-3.2 | 1.0-1.5 | 0.8-1.7 | 0.6-1.0 | 0.25-0.5  | 0.2-0.3 | 0.17-0.3 | 0.15-0.3 | 0.1-0.2 | 0.07-0.1 | 0.07-0.1 |
|                          | 22kW  |                | 72-100         | 50-75   | 38-55    | 25-35    | 24-32   | 20-25   | 15-19   | 10-13.5  | 8.0-10   | 6.0-8.5 | 4.0-6.0 | 3.0-3.5 | 2.0-3.0 | 1.5-2.2  | 1.2-1.5 | 0.4-0.8 | 0.3-0.6 | 0.2-0.6 | 0.2-0.5   | 0.1-0.3 | 0.1-0.3  | 0.1-0.3  | 0.1-0.2 |          |          |
|                          | 12kW  |                | 70-85          | 40-65   | 35-45    | 20-32    | 18-25   | 12-15   | 8-12    | 6.0-8.0  | 4.0-5.5  | 3.0-5.0 | 2.2-2.8 | 1.2-2.0 | 1.0-1.6 | 0.5-0.8  | 0.3-0.6 | 0.3-0.5 | 0.3-0.5 | 0.2-0.4 | 0.1-0.2   |         |          |          |         |          |          |
|                          | 6000W |                | 42-52          | 20-33   | 15-22    | 10-15    | 7.0-12  | 4.8-9.0 | 3.0-4.0 | 1.6-2.5  | 0.8-1.5  | 0.6-1.2 | 0.5-1.0 | 0.4-0.8 | 0.3-0.6 | 0.2-0.4  |         |         |         |         |           |         |          |          |         |          |          |
|                          | 3000W |                | 30-55          | 12-30   | 6.0-10.0 | 4.0-6.0  | 3.0-5.0 | 2.0-3.2 | 1.0-1.8 | 0.5-0.85 | 0.4-0.5  |         |         |         |         |          |         |         |         |         |           |         |          |          |         |          |          |
| Aluminum N2              | 50kW  | speed<br>m/min | 70-100         | 40-70   | 35-60    | 30-45    | 22-35   | 18-32   | 12-23   | 7-16     | 4.5-12   | 3-8     | 2.5-6   | 1.8-2.2 | 1.5-2   | 0.8-1.5  | 0.6-1.2 | 0.4-0.9 | 0.4-0.6 | 0.4-0.5 | 0.3-0.4   | 0.2-0.4 | 0.1-0.3  | 0.1-0.3  | 0.1-0.2 | 0.1-0.2  |          |
|                          | 30kW  |                | 70-100         | 40-70   | 35-60    | 30-45    | 22-35   | 18-32   | 12-23   | 7-16     | 4.5-12   | 3-8     | 2.5-6   | 1.8-2.2 | 1.5-2   | 0.8-1.5  | 0.6-1.2 | 0.4-0.9 | 0.4-0.6 | 0.4-0.5 | 0.3-0.4   | 0.2-0.4 | 0.1-0.3  | 0.1-0.3  | 0.1-0.2 | 0.1-0.2  |          |
|                          | 22kW  |                | 70-100         | 40-70   | 35-60    | 30-43    | 22-35   | 18-28   | 12-20   | 7.0-12.0 | 4.5-6.5  | 3.0-4.0 | 2.5-3.5 | 1.8-2.2 | 1.5-2.0 | 0.8-1.5  | 0.6-1.2 | 0.4-0.9 | 0.3-0.5 | 0.3-0.4 | 0.2-0.4   | 0.2-0.4 | 0.1-0.3  |          |         |          |          |
|                          | 12kW  |                | 60-85          | 38-60   | 30-40    | 20-30    | 15-25   | 10-15   | 7.0-12  | 4.5-8.0  | 4.0-5.0  | 1.8-2.7 | 1.5-2.5 | 1.0-1.8 | 0.9-1.5 | 0.6-0.9  | 0.3-0.8 | 0.3-0.6 | 0.3-0.4 | 0.2-0.3 | 0.1-0.2   |         |          |          |         |          |          |
|                          | 6000W |                | 42-55          | 20-40   | 15-25    | 9.5-12   | 5.0-8.0 | 3.8-5.0 | 2.0-2.5 | 1.0-1.5  | 0.8-1.3  | 0.9-1.2 | 0.5-0.8 | 0.5-0.7 | 0.3-0.5 |          |         |         |         |         |           |         |          |          |         |          |          |
|                          | 3000W |                | 25-30          | 13-20   | 6.5-7.5  | 3.5-5.0  | 2.5-3.5 | 1.5-2.5 | 0.7-1.0 |          |          |         |         |         |         |          |         |         |         |         |           |         |          |          |         |          |          |
| Brass N2                 | 50kW  | speed<br>m/min | 65-75          | 40-60   | 30-45    | 25-38    | 22-31   | 15-25   | 12-18   | 8-14     | 5-10     | 4.5-8.5 | 4-6.5   | 3-5.5   | 2-4     | 1.5-3    | 1-1.5   | 0.5-1   | 0.5-0.8 |         |           |         |          |          |         |          |          |
|                          | 30kW  |                | 65-75          | 40-60   | 30-45    | 25-38    | 22-31   | 15-25   | 12-18   | 8-14     | 5-10     | 4.5-8.5 | 4-6.5   | 3-5.5   | 2-4     | 1.5-3    | 1-1.5   | 0.5-1   | 0.5-0.8 |         |           |         |          |          |         |          |          |
|                          | 22kW  |                | 65-75          | 40-60   | 25-40    | 20-35    | 20-28   | 12-20   | 9.0-12  | 6.0-10   | 3.0-4.5  | 1.8-4.0 | 1.5-3.0 | 1.0-2.5 | 0.4-2.0 | 0.3-0.5  | 0.2-0.4 | 0.1-0.2 |         |         |           |         |          |          |         |          |          |
|                          | 12kW  |                | 55-65          | 38-42   | 18-30    | 15-20    | 10-15   | 6.0-8.0 | 5.0-7.0 | 4.5-6.0  | 2.4-4.0  | 0.8-1.5 | 0.6-1.2 | 0.4-0.6 | 0.3-0.5 |          |         |         |         |         |           |         |          |          |         |          |          |
|                          | 6000W |                | 35-45          | 20-30   | 12-18    | 8.0-12.0 | 6.0-8.0 | 3.0-6.5 | 1.6-2.2 | 0.8-1.2  | 0.3-0.5  | 0.3-0.5 |         |         |         |          |         |         |         |         |           |         |          |          |         |          |          |
|                          | 3000W |                | 20-30          | 6.0-10  | 3.0-8.0  | 2.5-4.0  | 1.5-2.0 | 1.0-1.8 |         |          |          |         |         |         |         |          |         |         |         |         |           |         |          |          |         |          |          |

**Packing Photos**



**Packing in Factory**



**In Container**



**In Container Yard**

**ABOUT BODOR**

A company of over 2,000 people only focusing on fiber laser cutting machines.

Local Sales & Engineer Service team in American.

Over 150 backbone researchers only into laser field.

Bodor Super Factory covers over 60, 000 m<sup>2</sup>.

Exports of fiber laser cutting machine are No.1 in China.

Users of over 150 countries are happy with Bodor.

Bodor gains patents and certifications (CSA, cTUVus, CE, FDA, ISO 9001, BV, SGS, etc.)



Won the German IF Award at the International Industry Awards in 2019. Won the German Red Dot Award at the International Industry Awards in 2018. Won the China Red Star Design Award, National High-tech Zone Gazelle Enterprise in 2016. International awards 10+; industry awards 50+; patent certificates 130+.



**Leading Manufacturer**

**World Brand**

**Honors**

**Bodor China**



**Bodor USA**

