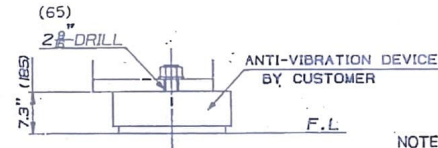
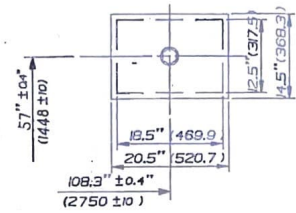
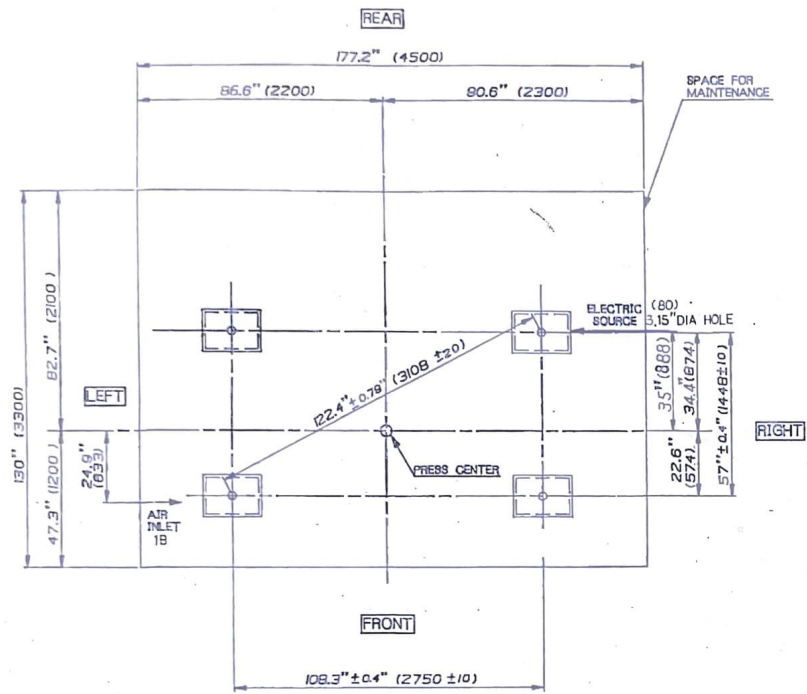


GENERAL TOLERANCE SHALL CONFORM TO KES P4.0B2.0

REVISION	DATE	BY	CHKD
△x			
△x			

A401-2

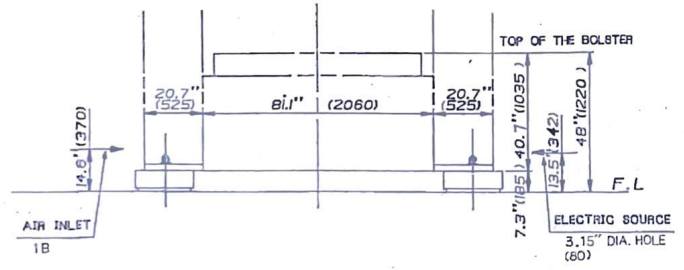
DIMENSION : inch
(mm)



DETAILS OF INSTALLATION
(1:15)

NOTE

- DESIGN, PROCUREMENT OF MATERIAL, AND WORKS OF THE FOUNDATION SHALL BE ACCOMPLISHED BY CUSTOMER.
- PIPING AND WIRING WORKS OUTSIDE THE MACHINE SHALL BE ACCOMPLISHED BY CUSTOMER.
- DIFFERENCE IN HEIGHT AMONG LEVEL PLATES SHOULD BE WITHIN 0.08inch, AND HORIZONTALITY OF A LEVEL PLATE SHOULD BE WITHIN 0.006inch PER LENGTH OF 39.37inch.
- WHEN DESIGNING THIS FOUNDATION, DYNAMIC FORCE (APPROX 60% OF THE MACHINE WEIGHT) SHOULD BE ADDED TO THE MACHINE WEIGHT.
- TOTAL WEIGHT OF THE MACHINE (EXCEPT DIES) IS 32 TON.



E2M-200W

3rd ANGLE P.	HEAT TREATMENT	MATERIAL	190M250
PRODUCTION NO. 190M250	APPROVE	DESIGN	NET WEIGHT
PART NAME FOUNDATION DRAWING	CHECK	DATE	PRODUCTION NO.
SIZE 2	SCALE 1:30	DATE 87-5-20	QTY
PART NO. 92-2-405605			

☪ KOMATSU LTD. Ⓞ