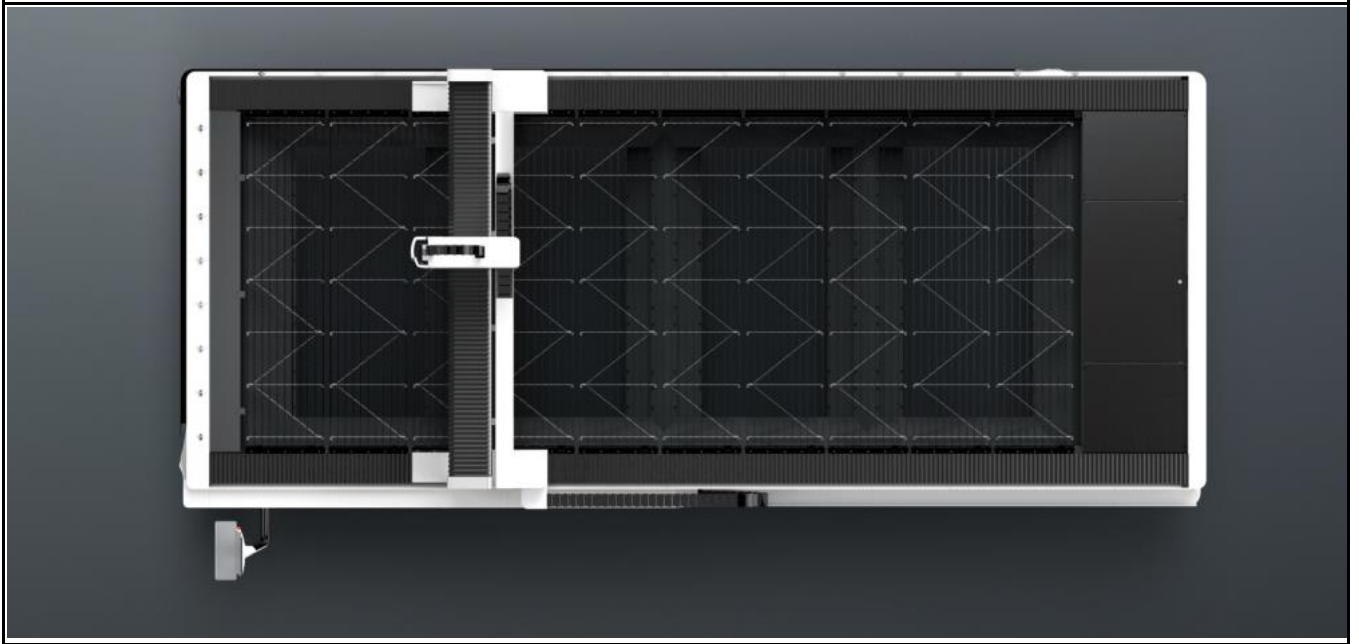
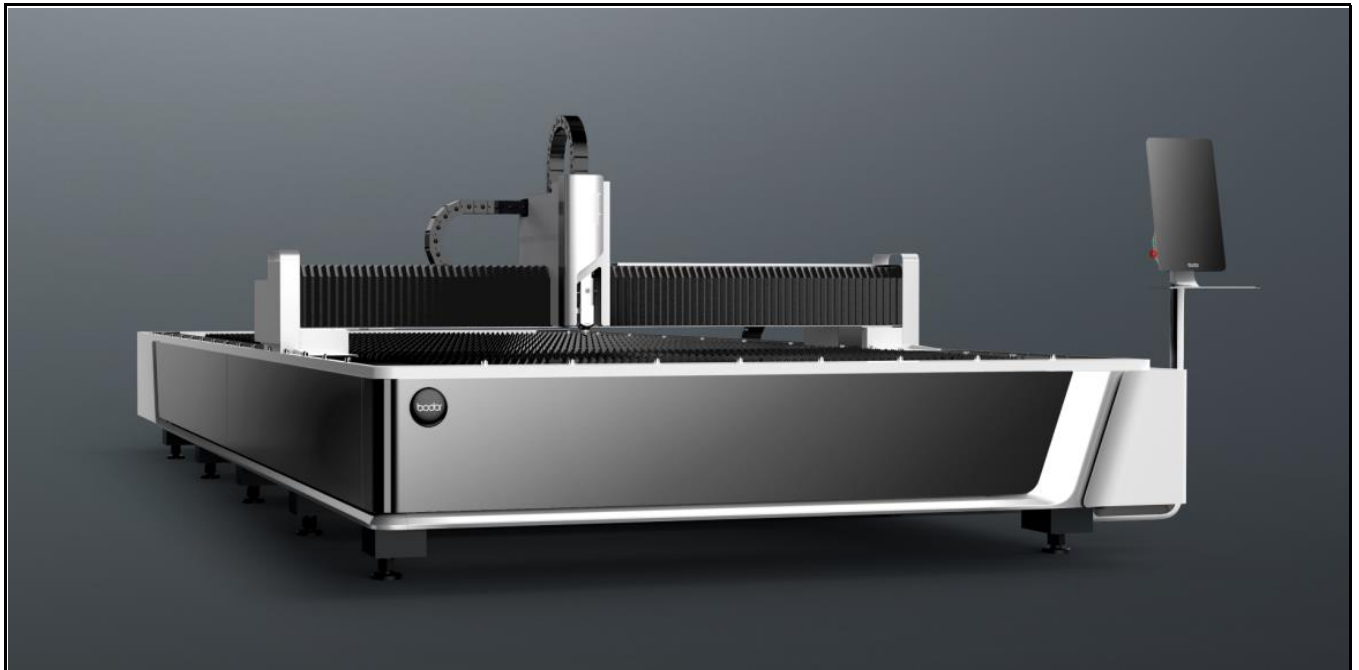


FIBER LASER CUTTING MACHINE

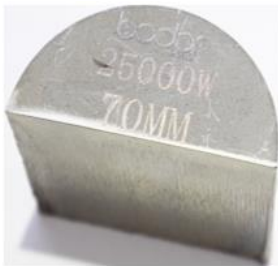
	Laser Power	
	6kw	
Centrifugal Fan	Included	
Freight & Tariff	Included	
Installation & Training Cost	Included	
Transportation	By Sea	
Loading Container	1*40'FR	
Payment Terms	30% down payment, 70% before shipment.	
Warranty	Three years limited warranty for main parts. One year free labor.	
Optional		
Scanning Cutting		
Fume Filter		
Air Compressor		
Basic Parameter		
Working area	6100mm*2500mm (≈ 20'x8.2')	
Max. linkage speed	100m/min (328ft/min)	
Intelligent Function		
Bodor Lightning perforation technology	Yes	
High Speed Cutting Expert Database	Yes	
Remnant Typesetting	Yes	
Air pressure intelligent control	12KW and above	
Automatic adjustment of cutting gas pressure	6kW and below: O2 above 6kW: O2, N2, air	
Gas filtration alarm device	12KW and above	
Auto-focus of laser head	Yes	
Laser cutting technology expert database	Yes	
Ergonomic Remote Control (Bodor Mango®)	Yes	
Active anti-collision function	Yes	
Intelligent anti-shake of sheet edge	Yes	
High quality Cutting Expert Database	Yes	
Anti-slag Protection	Yes	
Mineral casting anti burning	Yes	
Gas-saving steady flow nozzle	Yes	
Automatic lubrication	Yes	
Intelligent maintenance reminder	Yes	
WIFI internet connection	Yes	
Bodor Cloud service	Yes	
Performance		
Requirements for sheet	Plate thickness≥0.8mm	
Max. acceleration	1.5G	

Table load bearing	2992kg (1-6kw) 3595kg (12kw)
Machine overall dimensions	8121mm*3925mm*1830mm (\approx 26.6'x12.9'x6')
Overall weight	3530kg
Z axis travel	100mm (\approx 3.9")
Positioning accuracy	\pm 0.05mm/m
Repositioning accuracy	\pm 0.03mm
Φ30mm roundness	\leq 0.15mm
□30mm adjacent side dimension difference	\leq 0.06mm
□190mm adjacent side dimension difference	\leq 0.15mm
□190mm diagonal size difference	\leq 0.20mm
Configuration	
Laser source	Bodor Power
Laser head	BodorGenius
Machine bed	Mortise-and-tenon structure bed
Gantry structure	Stretched Aluminum gantry
Linear Rails	Bodor
Rack	Bodor
X-axis, Y-axis, Z-axis, A-axis Servo motor and driver	Bodor
Integral aluminum cantilever for high pressure steel mould casting	Yes
Control system	Bodor Thinker
Display size	21.5 inches
System identification file format	DXF, DWG, PLT, NC, G file
Intelligent alarm	Yes
Water Chiller	Yes
Power Requirements	220V/440V/480V 60HZ 3PHASE (Up to Clients Power Requirement)
Total power capacity/current with 12KW source (380V)	78.6KVA/119.5A
Total power capacity/current with 6KW source (380V)	48.1KVA/73.1A
Total power capacity/current with 3KW source (380V)	41.8KVA/63.4A
A6Plus Photo	





Cutting Samples



Key Configuration Photos



Mortise-and-tenon welding structure machine bed



Stretched Aluminum Gantry



21.5 inches Display



BodorPower Laser Source



BodorGenius Laser Cutting Head



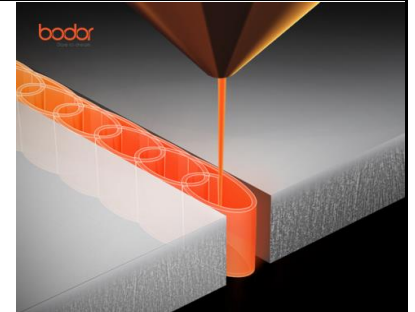
BodorThinker Control System



Air Compressor (Optional)



Fume Filter (Optional)



Scanning Cutting (Optional)

Cutting Parameters

		Power	Thickness (mm)	1	2	3(1/8")	4	5	6(1/4")	8	10	12(1/2")	14	16	18	20	25(1")	30	35	40	45	50(2")	60	70	80	90	100(4")	110
Carbon steel (Q235A) Q2	speed m/min	50kw	9-11	5-7.5	3.5-5.5	3.5-5	3.3-4.8	3-4.5	2.5-3.6	2.2-2.8	1.6-2.1	1.6-2.0	1.5-2.0	1.4-2.0	1.5-1.9	1.0-1.6	1.1-1.4	0.9-1.1	1.0-1.2	0.9-1.1	0.6-1.0	0.4-0.8	0.3-0.5	0.2-0.3	0.2-0.3	0.1-0.2		
		30kw	9-11	5-7.5	3.5-5.5	3.5-5	3.3-4.8	3-4.5	2.5-3.6	2.2-2.8	1.6-2.1	1.6-2.0	1.5-2.0	1.4-2.0	1.5-1.9	1.0-1.6	1.1-1.4	0.9-1.1	0.8-1.0	0.5-0.9	0.4-0.8	0.2-0.6	0.2-0.3	0.2-0.3	0.1-0.2			
		22kw	9-11	5-7.5	3.5-5.5	3.5-5	3.3-4.8	3.0-4.2	2.5-3.5	2.0-2.7	1.6-2.1	1.5-2.0	1.4-2.0	1.4-2.0	1.5-1.9	1.0-1.6	0.8-1.4	0.6-1	0.5-0.9	0.3-0.5	0.2-0.5	0.2-0.3	0.1-0.3					
		12kw	9-11	5-7.5	3.5-5.5	3.5-5	3.3-4.8	3.0-4.2	2.5-3.5	2.2-2.7	1.2-2.1	1.7-1.9	1.2-1.7	1.0-1.8	0.6-1.5	0.5-1.2	0.3-1.0	0.3-0.7	0.2-0.4	0.2-0.3	0.15-0.25							
		6000W	8-10	5-7.5	3.5-5	3.0-4.5	3.0-4.2	2.5-3.5	2.2-3.2	1.8-2.5	1.2-2.1	1.2-1.8	0.8-1.5	0.6-1.2	0.5-0.8	0.3-0.55	0.2-0.3											
		3000W	8-10	5.5-7.5	3.0-4.0	2.8-3.5	2.6-3.2	2.5-2.6	1.6-1.8	1.4-1.6	1.0-1.4	0.8-0.9	0.7-0.8	0.6-0.7	0.5-0.6													
		Power	Thickness (mm)	1	2	3(1/8")	4	5	6(1/4")	8	10	12(1/2")	14	16	18	20	25(1")	30	35	40	45	50(2")	60	70	80	90	100(4")	110
Stainless steel (201) #2	speed m/min	50kw	72-100	60-75	45-65	35-45	30-35	25-30	25-30	18-22	16-18	11-15	11-13	9-11	8-10	6-7	4-5	2.8-3.5	2-2.5	1-1.5	0.6-1	0.4-0.6	0.35-0.5	0.2-0.4	0.2-0.3	0.1-0.2	0.1-0.2	
		30kw	72-100	50-75	38-55	30-40	25-32	20-29	15-20	12-17	9-14	7-11	5-9	3-8	3-7	2-4.5	1.5-3.2	1.0-1.5	0.8-1.7	0.6-1.0	0.25-0.5	0.2-0.3	0.17-0.3	0.15-0.3	0.1-0.2	0.07-0.1	0.07-0.1	
		22kw	72-100	50-75	38-55	25-35	24-32	20-25	15-19	10-13.5	8.0-10	6.0-8.5	4.0-6.0	3.0-3.5	2.0-3.0	1.5-2.2	1.2-1.5	0.4-0.8	0.3-0.6	0.2-0.6	0.2-0.5	0.1-0.3	0.1-0.3	0.1-0.3	0.1-0.2			
		12kw	70-85	40-66	35-45	20-32	18-25	12-15	8-12	6.0-8.0	4.0-6.5	3.0-6.0	2.2-2.8	1.2-2.0	1.0-1.6	0.5-0.8	0.3-0.6	0.3-0.5	0.3-0.5	0.2-0.4	0.1-0.2							
		6000W	42-52	20-33	15-22	10-15	7.0-12	4.8-9.0	3.0-4.0	1.6-2.5	0.8-1.5	0.6-1.2	0.5-1.0	0.4-0.8	0.3-0.6	0.2-0.4												
		3000W	30-55	12-30	6.0-10.0	4.0-6.0	3.0-5.0	2.0-3.2	1.0-1.8	0.5-0.85	0.4-0.5																	
		Power	Thickness (mm)	1	2	3(1/8")	4	5	6(1/4")	8	10	12(1/2")	14	16	18	20	25(1")	30	35	40	45	50(2")	60	70	80	90	100(4")	
Aluminum #2	speed m/min	50kw	70-100	40-70	35-60	30-45	22-35	18-32	12-23	7-16	4.5-12	3-8	2.5-6	1.8-2.2	1.5-2	0.8-1.5	0.6-1.2	0.4-0.9	0.4-0.6	0.4-0.6	0.4-0.5	0.3-0.4	0.2-0.4	0.1-0.3	0.1-0.3	0.1-0.2	0.1-0.2	
		30kw	70-100	40-70	35-60	30-45	22-35	18-32	12-23	7-16	4.5-12	3-8	2.5-6	1.8-2.2	1.5-2	0.8-1.5	0.6-1.2	0.4-0.9	0.4-0.6	0.4-0.6	0.4-0.5	0.3-0.4	0.2-0.4	0.1-0.3	0.1-0.3	0.1-0.2	0.1-0.2	
		22kw	70-100	40-70	35-60	30-43	22-35	18-28	12-20	7.0-12.0	4.5-6.5	3.0-4.0	2.5-3.5	1.8-2.2	1.5-2.0	0.8-1.5	0.6-1.2	0.4-0.9	0.3-0.5	0.3-0.4	0.2-0.4	0.2-0.4	0.1-0.3					
		12kw	60-85	38-60	30-40	20-30	15-25	10-15	7.0-12	4.5-8.0	4.0-5.0	1.8-2.7	1.5-2.5	1.0-1.8	0.9-1.5	0.6-0.9	0.3-0.8	0.3-0.6	0.3-0.4	0.2-0.3	0.1-0.2							
		6000W	42-55	20-40	15-25	9.5-12	5.0-8.0	3.8-5.0	2.0-2.5	1.0-1.5	0.8-1.3	0.9-1.2	0.5-0.8	0.5-0.7	0.5-0.7	0.3-0.5												
		3000W	25-30	13-20	6.5-7.5	3.5-5.0	2.5-3.5	1.5-2.5	0.7-1.0																			
		Power	Thickness (mm)	1	2	3(1/8")	4	5	6(1/4")	8	10	12(1/2")	14	16	18	20	25(1")	30	35	40	45	50(2")	60	70	80	90	100(4")	
Brass #2	speed m/min	50kw	65-75	40-60	30-45	25-38	22-31	15-25	12-18	8-14	5-10	4.5-8.5	4-6.5	3-5.5	2-4	1.5-3	1-1.5	0.5-1	0.5-0.8									
		30kw	65-75	40-60	30-45	25-38	22-31	15-25	12-18	8-14	5-10	4.5-8.5	4-6.5	3-5.5	2-4	1.5-3	1-1.5	0.5-1	0.5-0.8									
		22kw	65-75	40-60	25-40	20-35	20-28	12-20	9.0-12	6.0-10	3.0-4.5	1.8-4.0	1.5-3.0	1.0-2.5	0.4-2.0	0.3-0.5	0.2-0.4	0.1-0.2										
		12kw	55-65	38-42	18-30	15-20	10-15	6.0-8.0	5.0-7.0	4.5-6.0	2.4-4.0	0.8-1.5	0.6-1.2	0.4-0.6	0.3-0.5													
		6000W	35-45	20-30	12-18	8.0-12.0	6.0-8.0	3.0-6.5	1.6-2.2	0.8-1.2	0.3-0.5	0.3-0.5																
		3000W	20-30	6.0-10	3.0-8.0	2.5-4.0	1.5-2.0	1.0-1.8																				

Packing Photos



Packing in Factory



In Container



In Container Yard

ABOUT BODOR

A company of over 2,000 people only focusing on fiber laser cutting machines.

Local Sales & Engineer Service team in American.

Over 150 backbone researchers only into laser field.

Bodor Super Factory covers over 60, 000 m².

Exports of fiber laser cutting machine are No.1 in China.

Users of over 150 countries are happy with Bodor.

Bodor gains patents and certifications (CSA, cTUVus, CE, FDA, ISO 9001, BV, SGS, etc.)



Won the German IF Award at the International Industry Awards in 2019. Won the German Red Dot Award at the International Industry Awards in 2018. Won the China Red Star Design Award, National High-tech Zone Gazelle Enterprise in 2016. International awards 10+; industry awards 50+; patent certificates 130+.



Leading Manufacturer

World Brand

Honors

Bodor China



Bodor USA



