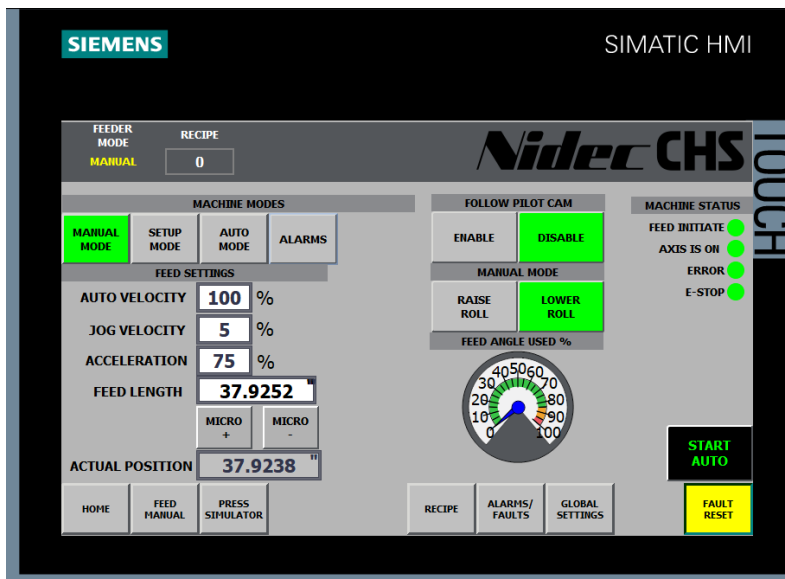


**NIDEC-CHS Servo Roll Feed Control Retrofit Package**



**COMPLETE SERVO ROLL FEED CONTROL PACKAGE:**

- SIMOTION Control platform with touch screen HMI
- Servo motor power cable & servo motor feedback cable **10-meter length**
- Free standing NEMA-12 sloped front electrical enclosure – including fused disconnect
- Full operator’s manuals and electrical schematics
  - Remote pendant for jog forward and reverse
  - All other hard button/switch functions are optional at an additional cost

**SIMO-450 AC Brushless Servo Control Package Specifications:**

Drive size .....	450 Inch / Lbs.
Voltage .....	480 V
Control voltage .....	24 V
Max feed length .....	999.999 Inches
Accuracy at motor output shaft within .....	+/- 0.001 Inches
Material feed accuracy within .....	0.003 Inches
Job memory .....	200

**Standard Features:**

- Operating modes (Parameter, Manual, Automatic, Setup)
- Press before feed (single stroke, continuous stroke)
- Emergency stop (hard button)
- Product counter
- Clear text diagnostics including fault log
  
- I/O status
- **Production Data:**
  - Feed angle utilization as %
  - Motor torque as a percentage
  - Strokes per minute
  - Average line speed (FPM)
  - Micro-adjust on the fly
  - Upper feed roll pilot and lift (Manual/Auto)
- **Data management for 200 products:**
  - Feed length
  - Speed
  - Acceleration / Deceleration
  - Piece counter / Batch counter
  - Reset product counter, piece counter
- **Communication (with preparation)**
  - Ethernet IP / PROFINET
  -

The console cabinet is a NEMA 12 enclosure with fusible disconnect. The feed will require one pole or two-24V DC signal from and the press rotary cam switch for automatic feed initiate and pilot pin release.

