

AC Surge Protector SPD APEX Panel 240 Vac 3-Phase Delta SASD 10 kA, UL 94-5V

1101-440-44
APEX IV X5 240DR



Features

- 100% SASD Protection
- SASD Only or SASD/MOV Hybrid Protection
- Power and Suppression Status LEDs
- Dry Contact Remote Annunciation Wire Leads
- Replaceable Suppression Modules
- NEMA 4X Enclosure

Applications

- Electrical Panelboards
- Industrial Automation
- Communications Base Stations
- IT & Data Centers
- Switchgear
- Motor Control Centers
- Automatic Transfer Switches
- Wastewater Treatment
- Oil & Gas
- LED Lighting
- Schools
- Hospitals

Description

AC surge protector (also known as SPD or lightning protector) 1101-440-44 from Transtector is a UL 94-5V panel style SPD that utilizes state of the art SASD technology to protect critical equipment that operates on a 240 Vac 3-Phase Delta electrical service. This surge protector provides effective protection against electrical transient surges that are generated both by external lightning events and by internal switching events and supports long-term system reliability by safely shunting high amounts of transient energy while maintaining a very low clamping voltage. Transtector AC surge protectors are available in stock with same day shipping.

Electrical Specifications

Description	Minimum	Typical	Maximum	Units
Service Voltages		240		Vac
Service Type		3-Phase Delta		
Maximum Continuous Operating Voltage (MCOV)				
L - L			275	Vac

Surge Protection Specification

Description	Minimum	Typical	Maximum	Units
Surge Protection Technology		SASD		
Protection Modes		L-L		
8/20 μ s Surge Current			10	kA
Nominal Discharge Current Rating (In)		10		kA

Click the following link (or enter part number in "SEARCH" on website) to obtain additional part information including price, inventory and certifications:
[AC Surge Protector SPD APEX Panel 240 Vac 3-Phase Delta SASD 10 kA, UL 94-5V 1101-440-44](#)

AC Surge Protector SPD APEX Panel 240 Vac
3-Phase Delta SASD 10 kA, UL 94-5V

1101-440-44
APEX IV X5 240DR



Vpl 8/20µs L-N	660 @ 500A	Vpk
Response Time		5 ns
SCCR (Short Circuit Current Rating)	65	kAIC

Mechanical Specifications

Size

Height	12.5 in	[317.5 mm]
Width	10.5 in	[266.7 mm]
Depth	6.5 in	[165.1 mm]
Weight	7.2 lbs	[3.27 kg]
Housing Material and Plating	Fiberglass	

Environmental Specifications

Temperature Range (Operational)	-30 to +65 deg C
Humidity	90% non-condensing

Installation

Mount Type	Panel
Service Wiring Terminal Terminals	#4 to #10 AWG
Status Indication Terminal 3-Pin Connector	#14 to #22 AWG

Compliance Certifications

UL Compliant Certifications	Yes UL 94-5V
-----------------------------	-----------------

Click the following link (or enter part number in "SEARCH" on website) to obtain additional part information including price, inventory and certifications:
[AC Surge Protector SPD APEX Panel 240 Vac 3-Phase Delta SASD 10 kA, UL 94-5V 1101-440-44](#)

AC Surge Protector SPD APEX Panel 240 Vac
3-Phase Delta SASD 10 kA, UL 94-5V

1101-440-44
APEX IV X5 240DR



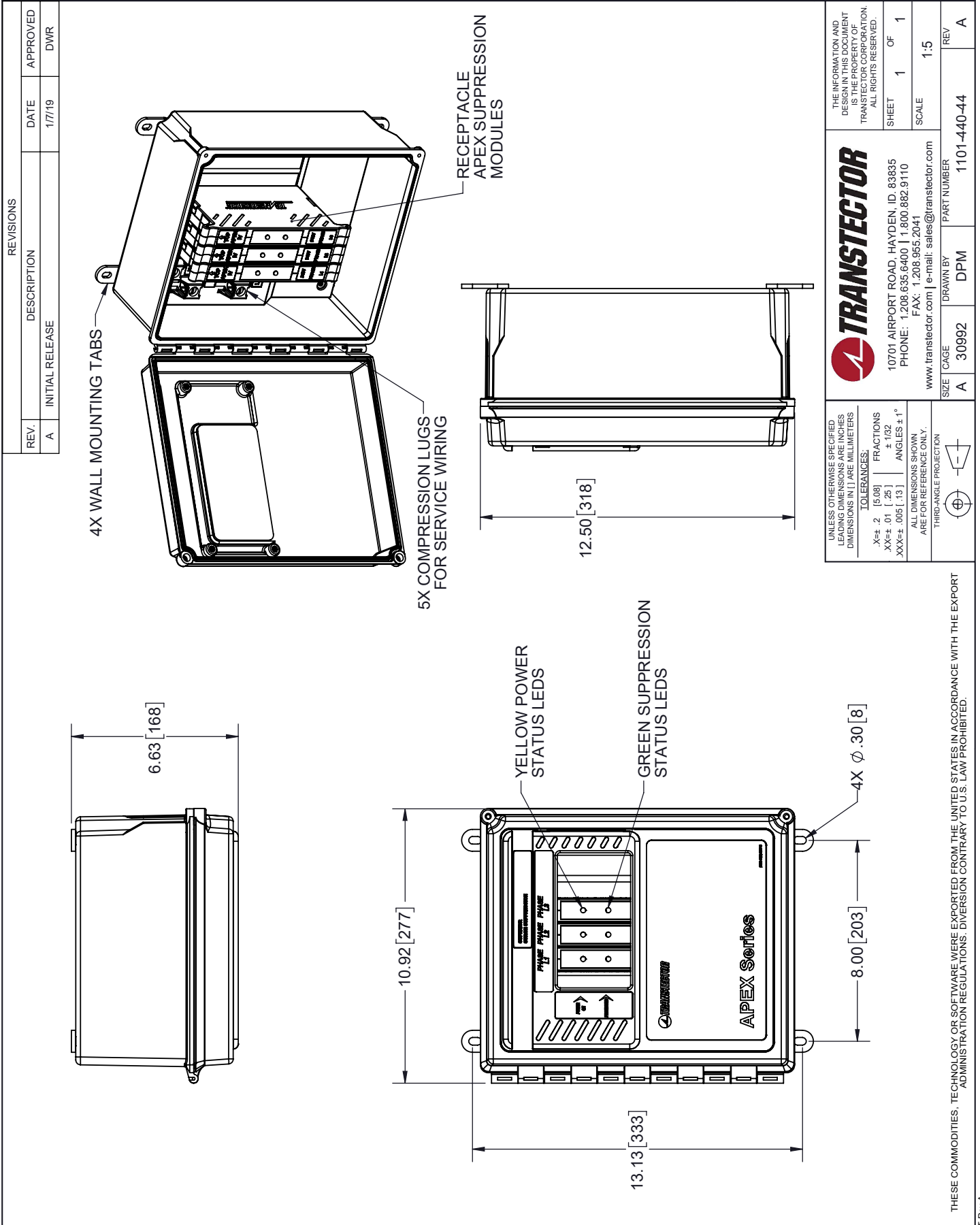
Transtector Systems specializes in protection of highly sensitive, low voltage equipment through its patented, non-degrading silicon diode technology and custom filters. Our power quality expertise translates into a diverse product offering including AC, DC, and signal applications as well as integrated cabinets, power distribution panels and EMP hardened devices.

Click the following link (or enter part number in "SEARCH" on website) to obtain additional part information including price, inventory and certifications: [AC Surge Protector SPD APEX Panel 240 Vac 3-Phase Delta SASD 10 kA, UL 94-5V 1101-440-44](#)

URL: <https://www.transtector.com/ac-surge-protector-spd-apex-panel-240-1101-440-44-p.aspx>

The information contained in this document is accurate to the best of our knowledge and representative of the part described herein. It may be necessary to make modifications to the part and/or the documentation of the part, in order to implement improvements. Transtector reserves the right to make such changes as required. Unless otherwise stated, all specifications are nominal. Transtector does not make any representation or warranty regarding the suitability of the part described herein for any particular purpose, and Transtector does not assume any liability arising out of the use of any part or documentation.

1101-440-44 CAD Drawing



REVISIONS			
REV.	DESCRIPTION	DATE	APPROVED
A	INITIAL RELEASE	1/7/19	DWR

UNLESS OTHERWISE SPECIFIED LEADING DIMENSIONS ARE INCHES DIMENSIONS IN [] ARE MILLIMETERS

TOLERANCES:
 .X±.2 [5.08] FRACTIONS ±.162
 XX±.01 [.25] ANGLES ±1°
 XXX±.005 [.13]

ALL DIMENSIONS SHOWN ARE FOR REFERENCE ONLY.
 THIRD-ANGLE PROJECTION

THE INFORMATION AND DESIGN IN THIS DOCUMENT IS THE PROPERTY OF TRANSTECTOR CORPORATION. ALL RIGHTS RESERVED.

TRANSTECTOR
 10701 AIRPORT ROAD, HAYDEN, ID, 83835
 PHONE: 1.208.635.6400 | 1.800.882.9110
 FAX: 1.208.955.2041
 www.transsector.com | e-mail: sales@transsector.com

SHEET 1 OF 1
 SCALE 1:5

SIZE CAGE DRAWN BY PART NUMBER REV
 A 30992 DPM 1101-440-44 A

THESE COMMODITIES, TECHNOLOGY OR SOFTWARE WERE EXPORTED FROM THE UNITED STATES IN ACCORDANCE WITH THE EXPORT ADMINISTRATION REGULATIONS. DIVERSION CONTRARY TO U.S. LAW PROHIBITED.

T-Rev A