

## FIBER LASER CUTTING MACHINE

	Laser Power	
	3kw	
Freight & Tariff	Included	
Installation & Training Cost	Included	
Transportation	By Sea	
Loading Container	2*40'HQ	
Payment Terms	30% down payment, 70% before shipment.	
Warranty	Three years limited warranty for main parts. One year free labor.	

## Optional list

iTrans (Automation)		
Fume filter		
Air Compressor	3kw, 6kw	
	12kw, 22kw	
	≥30kw	

## Basic Parameter

Working area	3048mm*1524mm (5'x10')
Max. linkage speed	200m/min (656'/min)

## Intelligent Function

One-click processing	Yes
Visual collision detection	Yes
Remnant Typesetting	Yes
One-second edge search	Yes
Bodor Lightning perforation technology	Yes
High Speed Cutting Expert Database	Yes
Automatic nozzle changer	8 Nozzles
Automatic nozzle cleaning	Yes
Touchscreen Display	Yes
Air pressure intelligent control	12KW and above
Automatic adjustment of cutting gas pressure	6KW below: O <sub>2</sub> 6KW and above: O <sub>2</sub> , N <sub>2</sub> , air
Gas filtration alarm device	12KW and above
Auto-focus of laser head	Yes
Laser cutting technology expert database	Yes
Ergonomic Remote Control (Bodor Mango®)	Yes
Active anti-collision function	Yes
Intelligent over-heat adaptation	Yes
Intelligent anti-shake	Yes
High quality Cutting Expert Database	Yes
Mineral casting anti burning	Yes
Anti-slag Protection	Yes
Gas-saving steady flow nozzle	Yes

Intelligent maintenance reminder	Yes
WIFI internet connection	Yes
Bodor Cloud service	Yes
<b>Performance</b>	
Requirements for sheet	Plate thickness $\geq$ 0.8mm
Max. acceleration	4.0G
Table load bearing	1090kg (3kw) 1450kg ( $\geq$ 6kw)
Machine overall dimensions	8840mm*2240mm*2520mm ( $\approx$ 29'x7.3'x8.3')
Overall weight	6500kg
Z axis travel	350mm ( $\approx$ 14")
Positioning accuracy	$\pm$ 0.05mm/m
Repositioning accuracy	0.02mm
$\Phi$ 30mm roundness	$\leq$ 0.15mm
<input type="checkbox"/> 30mm adjacent side dimension difference	$\leq$ 0.06mm
<input type="checkbox"/> 190mm adjacent side dimension difference	$\leq$ 0.15mm
<input type="checkbox"/> 190mm diagonal size difference	$\leq$ 0.20mm
<b>Configuration</b>	
Laser source	BodorPower
Laser head	Bodor Genius
Machine bed	Tenon and mortise structure bed
Gantry Structure	Stretched Aluminum gantry
Linear Rails	Bodor
Rack	Bodor
X-axis、Y-axis、Z-axis、A-axis Servo motor and driver	Bodor
Protective Enclosure	Yes
Enhanced-partition Dust Removal	Yes
Control system	BodorThinker
Display size	21.5 inches
Door-open Protection	Yes
Intelligent alarm	Yes
Water Chiller	Yes
Centrifugal fan	Yes
Power Requirements	220V/440V/480V 60HZ 3PHASE (Up to Clients Power Requirement)
Total power capacity/current with 60KW source (380V)	326.8KVA/496.5A
Total power capacity/current with 30KW source (380V)	192.3KVA/292.1A
Total power capacity/current with 24KW source (380V)	157.3kVA/238.9A
Total power capacity/current with 22KW source (380V)	149.8KVA/227.5A
Total power capacity/current with 12KW source (380V)	102.3KVA/155.4A
Total power capacity/current with 6KW source (380V)	63.6KVA/96.6A
Total power capacity/current with 3KW source (380V)	59.1KVA/89.8A

iTrans	
Working area	3000mm*1500mm (9.84' x 4.92')
Automatic Material Splitting	Yes
Adjustable suction cup frame	Yes
Material height identification	Yes
Bed position detection	Yes
Detection function of sheet metal	Yes
Automatic loading	Yes
Automatic blanking	Yes
Host security interlock	Yes
Table exchange interlock	Yes
Thickness measuring device	Yes
Intelligent Sheet Corner Separation	Yes
Maximum thickness of feeding plate	25mm ( $\approx 1''$ )
Number of laser cutting (host) machines connected	1
Maximum feeding plate size	3000mm*1500mm (9.84' x 4.92')
Minimum loading sheet size	1000mm*1000mm ( $\approx 3.3'\times 3.3'$ )
Maximum loading weight	900Kg
Minimum thickness of the feeding plate	0.8mm
Finished product trolley maximum load	3T
Maximum height of finished sheet	260mm ( $\approx 10''$ )
V-type guide mechanism for whole process	Yes
Module dimensions	10000mm*8500mm*2600mm ( $\approx 32.8'\times 27.9'\times 8.5'$ )
Total power capacity/current (380V)	11.25KVA/17.1A
Weight	4800kg
Continuous reloading time	110s
Operation method	Touch screen operation

### P3 Photo

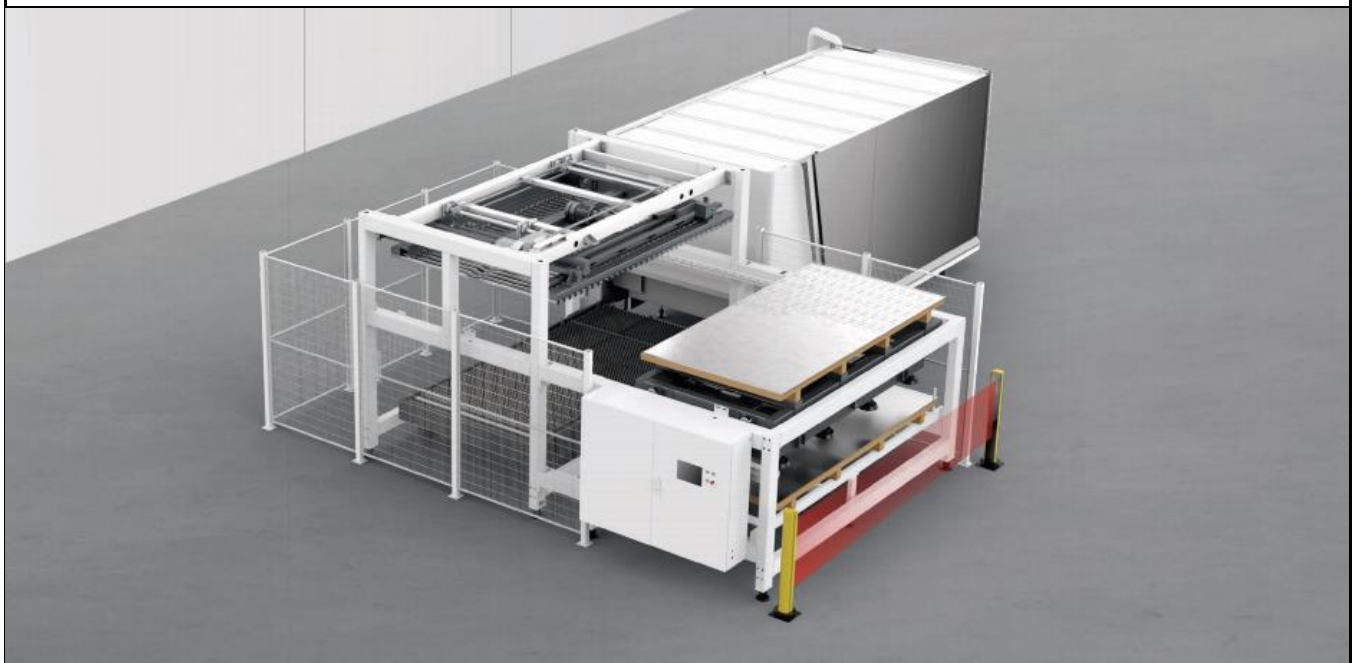




iLoader



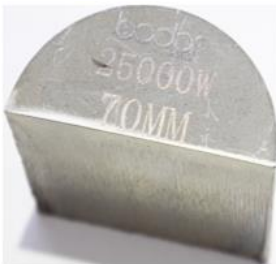
iTrans



iTrans Tower



**Cutting Samples**



**Key Configuration Photos**



**Mortise-and-tenon welding structure  
machine bed**



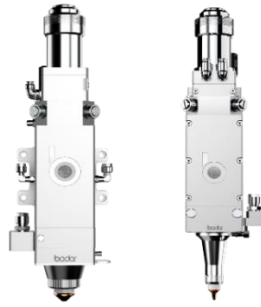
**Stretched Aluminum Gantry**



**21.5 inches Display**



BodorPower Laser Source



BodorGenius Laser Cutting Head



BodorThinker Control System



Air Compressor (Optional)



Fume Filter (Optional)



Automation (Optional)

## Cutting Parameters

		Power	Thickness (mm)	1	2	3(1/8")	4	5	6(1/4")	8	10	12(1/2")	14	16	18	20	25(1")	30	35	40	45	50(2")	60	70	80	90	100(4")	110
Carbon steel (Q235A) Q2	speed m/min	50kW	9-11	5-7.5	3.5-5.5	3.5-5	3.3-4.8	3-4.5	2.5-3.6	2.2-2.8	1.6-2.1	1.6-2.0	1.5-2.0	1.4-2.0	1.5-1.9	1.0-1.6	1.1-1.4	0.9-1.1	1.0-1.2	0.9-1.1	0.6-1.0	0.4-0.8	0.3-0.5	0.2-0.3	0.2-0.3	0.1-0.2		
		30kW	9-11	5-7.5	3.5-5.5	3.5-5	3.3-4.8	3-4.5	2.5-3.6	2.2-2.8	1.6-2.1	1.6-2.0	1.5-2.0	1.4-2.0	1.5-1.9	1.0-1.6	1.1-1.4	0.9-1.1	0.8-1.0	0.5-0.9	0.4-0.8	0.2-0.6	0.2-0.3	0.2-0.3	0.1-0.2			
		22kW	9-11	5-7.5	3.5-5.5	3.5-5	3.3-4.8	3.0-4.2	2.5-3.5	2.0-2.7	1.6-2.1	1.5-2.0	1.4-2.0	1.4-2.0	1.5-1.9	1.0-1.6	0.8-1.4	0.6-1	0.5-0.9	0.3-0.5	0.2-0.5	0.2-0.3	0.1-0.3					
		12kW	9-11	5-7.5	3.5-5.5	3.5-5	3.3-4.8	3.0-4.2	2.5-3.5	2.2-2.7	1.2-2.1	1.7-1.9	1.2-1.7	1.0-1.8	0.6-1.5	0.5-1.2	0.3-1.0	0.3-0.7	0.2-0.4	0.2-0.3	0.15-0.25							
		6000W	8-10	5-7.5	3.5-5	3.0-4.5	3.0-4.2	2.5-3.5	2.2-3.2	1.8-2.5	1.2-2.1	1.2-1.8	0.8-1.5	0.6-1.2	0.5-0.8	0.3-0.55	0.2-0.3											
		3000W	8-10	5.5-7.5	3.0-4.0	2.8-3.5	2.6-3.2	2.5-2.6	1.6-1.8	1.4-1.6	1.0-1.4	0.8-0.9	0.7-0.8	0.6-0.7	0.5-0.6													
		Power	Thickness (mm)	1	2	3(1/8")	4	5	6(1/4")	8	10	12(1/2")	14	16	18	20	25(1")	30	35	40	45	50(2")	60	70	80	90	100(4")	110
Stainless steel (201) #2	speed m/min	50kW	72-100	60-75	45-65	35-45	30-35	25-30	25-30	18-22	16-18	11-15	11-13	9-11	8-10	6-7	4-5	2.8-3.5	2-2.5	1-1.5	0.6-1	0.4-0.6	0.35-0.5	0.2-0.4	0.2-0.3	0.1-0.2	0.1-0.2	
		30kW	72-100	50-75	38-55	30-40	25-32	20-29	15-20	12-17	9-14	7-11	5-9	3-8	3-7	2-4.5	1.5-3.2	1.0-1.5	0.8-1.7	0.6-1.0	0.25-0.5	0.2-0.3	0.17-0.3	0.15-0.3	0.1-0.2	0.07-0.1	0.07-0.1	
		22kW	72-100	50-75	38-55	25-35	24-32	20-25	15-19	10-13.5	8.0-10	6.0-8.5	4.0-6.0	3.0-3.5	2.0-3.0	1.5-2.2	1.2-1.5	0.4-0.8	0.3-0.6	0.2-0.6	0.2-0.5	0.1-0.3	0.1-0.3	0.1-0.3	0.1-0.2			
		12kW	70-85	40-66	35-45	20-32	18-25	12-15	8-12	6.0-8.0	4.0-5.5	3.0-5.0	2.2-2.8	1.2-2.0	1.0-1.6	0.5-0.8	0.3-0.6	0.3-0.5	0.3-0.5	0.2-0.4	0.1-0.2							
		6000W	42-52	20-33	15-22	10-15	7.0-12	4.8-9.0	3.0-4.0	1.6-2.5	0.8-1.5	0.6-1.2	0.5-1.0	0.4-0.8	0.3-0.6	0.2-0.4												
		3000W	30-55	12-30	6.0-10.0	4.0-6.0	3.0-5.0	2.0-3.2	1.0-1.8	0.5-0.85	0.4-0.5																	
		Power	Thickness (mm)	1	2	3(1/8")	4	5	6(1/4")	8	10	12(1/2")	14	16	18	20	25(1")	30	35	40	45	50(2")	60	70	80	90	100(4")	
Aluminum #2	speed m/min	50kW	70-100	40-70	35-60	30-45	22-35	18-32	12-23	7-16	4.5-12	3-8	2.5-6	1.8-2.2	1.5-2	0.8-1.5	0.6-1.2	0.4-0.9	0.4-0.6	0.4-0.5	0.3-0.4	0.2-0.4	0.1-0.3	0.1-0.3	0.1-0.2	0.1-0.2		
		30kW	70-100	40-70	35-60	30-45	22-35	18-32	12-23	7-16	4.5-12	3-8	2.5-6	1.8-2.2	1.5-2	0.8-1.5	0.6-1.2	0.4-0.9	0.4-0.6	0.4-0.5	0.3-0.4	0.2-0.4	0.1-0.3	0.1-0.3	0.1-0.2	0.1-0.2		
		22kW	70-100	40-70	35-60	30-43	22-35	18-28	12-20	7.0-12.0	4.5-6.5	3.0-4.0	2.5-3.5	1.8-2.2	1.5-2.0	0.8-1.5	0.6-1.2	0.4-0.9	0.3-0.5	0.3-0.4	0.2-0.4	0.2-0.4	0.1-0.3					
		12kW	60-85	38-60	30-40	20-30	15-25	10-15	7.0-12	4.5-8.0	4.0-5.0	1.8-2.7	1.5-2.5	1.0-1.8	0.9-1.5	0.6-0.9	0.3-0.8	0.3-0.6	0.3-0.4	0.2-0.3	0.1-0.2							
		6000W	42-55	20-40	15-25	9.5-12	5.0-8.0	3.8-5.0	2.0-2.5	1.0-1.5	0.8-1.3	0.9-1.2	0.5-0.8	0.5-0.7	0.5-0.7	0.3-0.5												
		3000W	25-30	13-20	6.5-7.5	3.5-5.0	2.5-3.5	1.5-2.5	0.7-1.0																			
		Power	Thickness (mm)	1	2	3(1/8")	4	5	6(1/4")	8	10	12(1/2")	14	16	18	20	25(1")	30	35	40	45	50(2")	60	70	80	90	100(4")	
Brass #2	speed m/min	50kW	65-75	40-60	30-45	25-38	22-31	15-25	12-18	8-14	5-10	4.5-8.5	4-6.5	3-5.5	2-4	1.5-3	1-1.5	0.5-1	0.5-0.8									
		30kW	65-75	40-60	30-45	25-38	22-31	15-25	12-18	8-14	5-10	4.5-8.5	4-6.5	3-5.5	2-4	1.5-3	1-1.5	0.5-1	0.5-0.8									
		22kW	65-75	40-60	25-40	20-35	20-28	12-20	9.0-12	6.0-10	3.0-4.5	1.8-4.0	1.5-3.0	1.0-2.5	0.4-2.0	0.3-0.5	0.2-0.4	0.1-0.2										
		12kW	55-65	38-42	18-30	15-20	10-15	6.0-8.0	5.0-7.0	4.5-6.0	2.4-4.0	0.8-1.5	0.6-1.2	0.4-0.6	0.3-0.5													
		6000W	35-45	20-30	12-18	8.0-12.0	6.0-8.0	3.0-6.5	1.6-2.2	0.8-1.2	0.3-0.5	0.3-0.5																
		3000W	20-30	6.0-10	3.0-8.0	2.5-4.0	1.5-2.0	1.0-1.8																				

## Packing Photos



		
Packing in Factory	In Container	In Container Yard
ABOUT BODOR		
A company of over 2,000 people only focusing on fiber laser cutting machines.		Leading Manufacturer
Local Sales & Engineer Service team in American.		
Over 150 backbone researchers only into laser field.		
Bodor Super Factory covers over 60, 000 m².		World Brand
Exports of fiber laser cutting machine are No.1 in China.		
Users of over 150 countries are happy with Bodor.		Honors
Bodor gains patents and certifications (CSA, cTUVus, CE, FDA, ISO 9001, BV, SGS, etc.)		
		
Won the German IF Award at the International Industry Awards in 2019. Won the German Red Dot Award at the International Industry Awards in 2018. Won the China Red Star Design Award, National High-tech Zone Gazelle Enterprise in 2016. International awards 10+; industry awards 50+; patent certificates 130+.		
  		
Bodor China		





**Bodor USA**

