

FIBER LASER CUTTING MACHINE

| | | |
|------------------------------|---|--|
| | Laser Power | |
| | 6kw | |
| Freight & Tariff | Included | |
| Installation & Training Cost | Included | |
| Transportation | By Sea | |
| Loading Container | 2*40'HQ | |
| Payment Terms | 30% down payment, 70% before shipment. | |
| Warranty | Three years limited warranty for main parts. One year free labor. | |

Optional list

| | | |
|---------------------|------------|--|
| iTrans (Automation) | | |
| Fume filter | | |
| Air Compressor | 3kw, 6kw | |
| | 12kw, 22kw | |
| | ≥30kw | |

Basic Parameter

| | |
|--------------------|------------------------|
| Working area | 3048mm*1524mm (5'x10') |
| Max. linkage speed | 200m/min (656'/min) |

Intelligent Function

| | |
|--|---|
| One-click processing | Yes |
| Visual collision detection | Yes |
| Remnant Typesetting | Yes |
| One-second edge search | Yes |
| Bodor Lightning perforation technology | Yes |
| High Speed Cutting Expert Database | Yes |
| Automatic nozzle changer | 8 Nozzles |
| Automatic nozzle cleaning | Yes |
| Touchscreen Display | Yes |
| Air pressure intelligent control | 12KW and above |
| Automatic adjustment of cutting gas pressure | 6KW below: O ₂ 6KW and above: O ₂ , N ₂ , air |
| Gas filtration alarm device | 12KW and above |
| Auto-focus of laser head | Yes |
| Laser cutting technology expert database | Yes |
| Ergonomic Remote Control (Bodor Mango®) | Yes |
| Active anti-collision function | Yes |
| Intelligent over-heat adaptation | Yes |
| Intelligent anti-shake | Yes |
| High quality Cutting Expert Database | Yes |
| Mineral casting anti burning | Yes |
| Anti-slag Protection | Yes |
| Gas-saving steady flow nozzle | Yes |

| | |
|---|--|
| Intelligent maintenance reminder | Yes |
| WIFI internet connection | Yes |
| Bodor Cloud service | Yes |
| Performance | |
| Requirements for sheet | Plate thickness \geq 0.8mm |
| Max. acceleration | 4.0G |
| Table load bearing | 1090kg (3kw) 1450kg (\geq 6kw) |
| Machine overall dimensions | 8840mm*2240mm*2520mm (\approx 29'x7.3'x8.3') |
| Overall weight | 6500kg |
| Z axis travel | 350mm (\approx 14") |
| Positioning accuracy | \pm 0.05mm/m |
| Repositioning accuracy | 0.02mm |
| Φ 30mm roundness | \leq 0.15mm |
| <input type="checkbox"/> 30mm adjacent side dimension difference | \leq 0.06mm |
| <input type="checkbox"/> 190mm adjacent side dimension difference | \leq 0.15mm |
| <input type="checkbox"/> 190mm diagonal size difference | \leq 0.20mm |
| Configuration | |
| Laser source | BodorPower |
| Laser head | Bodor Genius |
| Machine bed | Tenon and mortise structure bed |
| Gantry Structure | Stretched Aluminum gantry |
| Linear Rails | Bodor |
| Rack | Bodor |
| X-axis、Y-axis、Z-axis、A-axis Servo motor and driver | Bodor |
| Protective Enclosure | Yes |
| Enhanced-partition Dust Removal | Yes |
| Control system | BodorThinker |
| Display size | 21.5 inches |
| Door-open Protection | Yes |
| Intelligent alarm | Yes |
| Water Chiller | Yes |
| Centrifugal fan | Yes |
| Power Requirements | 220V/440V/480V 60HZ 3PHASE (Up to Clients Power Requirement) |
| Total power capacity/current with 60KW source (380V) | 326.8KVA/496.5A |
| Total power capacity/current with 30KW source (380V) | 192.3KVA/292.1A |
| Total power capacity/current with 24KW source (380V) | 157.3kVA/238.9A |
| Total power capacity/current with 22KW source (380V) | 149.8KVA/227.5A |
| Total power capacity/current with 12KW source (380V) | 102.3KVA/155.4A |
| Total power capacity/current with 6KW source (380V) | 63.6KVA/96.6A |
| Total power capacity/current with 3KW source (380V) | 59.1KVA/89.8A |

| iTrans | |
|---|--|
| Working area | 3000mm*1500mm (9.84' x 4.92') |
| Automatic Material Splitting | Yes |
| Adjustable suction cup frame | Yes |
| Material height identification | Yes |
| Bed position detection | Yes |
| Detection function of sheet metal | Yes |
| Automatic loading | Yes |
| Automatic blanking | Yes |
| Host security interlock | Yes |
| Table exchange interlock | Yes |
| Thickness measuring device | Yes |
| Intelligent Sheet Corner Separation | Yes |
| Maximum thickness of feeding plate | 25mm ($\approx 1''$) |
| Number of laser cutting (host) machines connected | 1 |
| Maximum feeding plate size | 3000mm*1500mm (9.84' x 4.92') |
| Minimum loading sheet size | 1000mm*1000mm ($\approx 3.3'$ x3.3') |
| Maximum loading weight | 900Kg |
| Minimum thickness of the feeding plate | 0.8mm |
| Finished product trolley maximum load | 3T |
| Maximum height of finished sheet | 260mm ($\approx 10''$) |
| V-type guide mechanism for whole process | Yes |
| Module dimensions | 10000mm*8500mm*2600mm ($\approx 32.8'$ x27.9'x8.5') |
| Total power capacity/current (380V) | 11.25KVA/17.1A |
| Weight | 4800kg |
| Continuous reloading time | 110s |
| Operation method | Touch screen operation |

P3 Photo

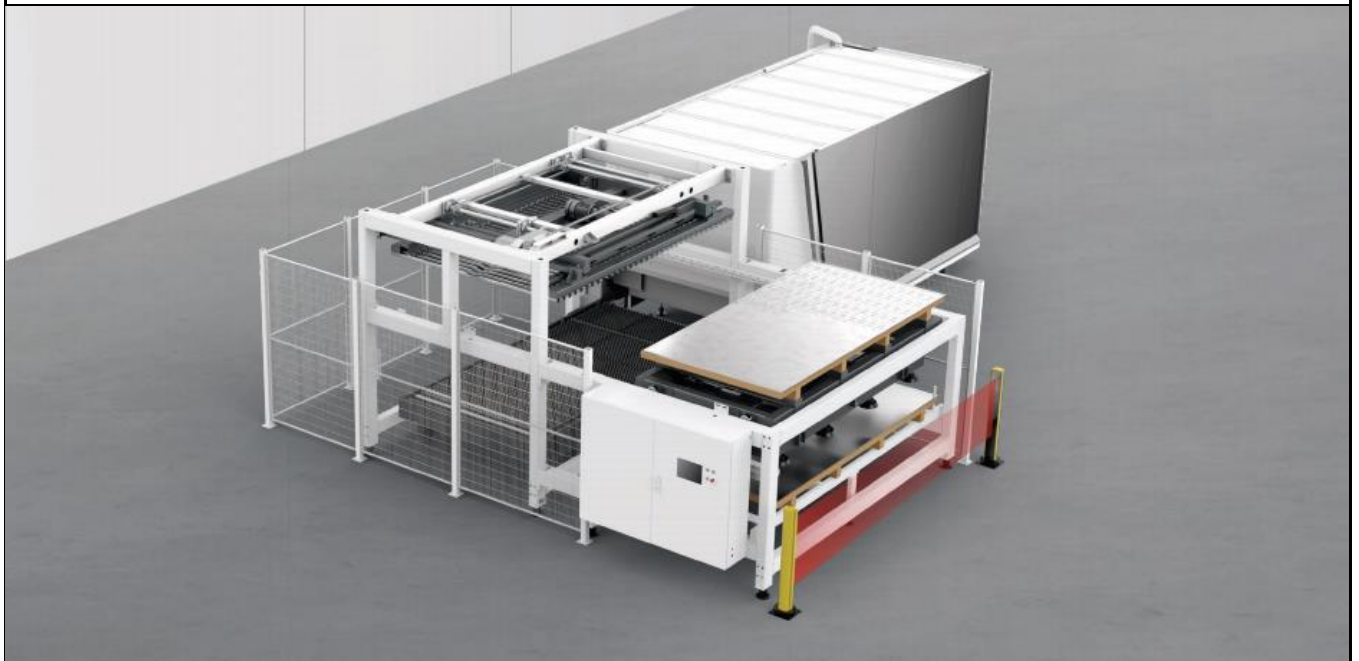




iLoader



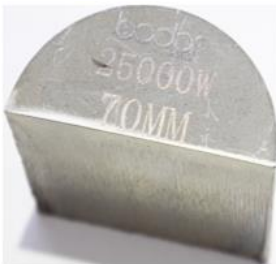
iTrans



iTrans Tower



Cutting Samples



Key Configuration Photos



**Mortise-and-tenon welding structure
machine bed**



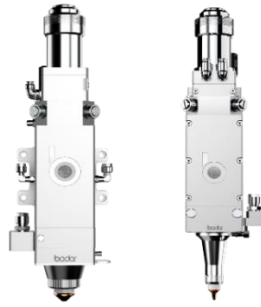
Stretched Aluminum Gantry



21.5 inches Display



BodorPower Laser Source



BodorGenius Laser Cutting Head



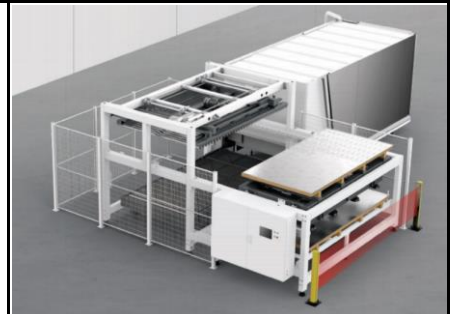
BodorThinker Control System



Air Compressor (Optional)



Fume Filter (Optional)



Automation (Optional)

Cutting Parameters

| | | Power | Thickness (mm) | 1 | 2 | 3(1/8") | 4 | 5 | 6(1/4") | 8 | 10 | 12(1/2") | 14 | 16 | 18 | 20 | 25(1") | 30 | 35 | 40 | 45 | 50(2") | 60 | 70 | 80 | 90 | 100(4") | 110 |
|-----------------------------------|----------------|-------|-------------------|---------|----------|----------|---------|---------|---------|----------|---------|----------|---------|---------|---------|----------|---------|---------|---------|---------|-----------|---------|----------|----------|---------|----------|----------|-----|
| Carbon steel (Q235A) Q2 | speed m/min | 50kW | 9-11 | 5-7.5 | 3.5-5.5 | 3.5-5 | 3.3-4.8 | 3-4.5 | 2.5-3.6 | 2.2-2.8 | 1.6-2.1 | 1.6-2.0 | 1.5-2.0 | 1.4-2.0 | 1.5-1.9 | 1.0-1.6 | 1.1-1.4 | 0.9-1.1 | 1.0-1.2 | 0.9-1.1 | 0.6-1.0 | 0.4-0.8 | 0.3-0.5 | 0.2-0.3 | 0.2-0.3 | 0.1-0.2 | | |
| | | 30kW | 9-11 | 5-7.5 | 3.5-5.5 | 3.5-5 | 3.3-4.8 | 3-4.5 | 2.5-3.6 | 2.2-2.8 | 1.6-2.1 | 1.6-2.0 | 1.5-2.0 | 1.4-2.0 | 1.5-1.9 | 1.0-1.6 | 1.1-1.4 | 0.9-1.1 | 0.8-1.0 | 0.5-0.9 | 0.4-0.8 | 0.2-0.6 | 0.2-0.3 | 0.2-0.3 | 0.1-0.2 | | | |
| | | 22kW | 9-11 | 5-7.5 | 3.5-5.5 | 3.5-5 | 3.3-4.8 | 3.0-4.2 | 2.5-3.5 | 2.0-2.7 | 1.6-2.1 | 1.5-2.0 | 1.4-2.0 | 1.4-2.0 | 1.5-1.9 | 1.0-1.6 | 0.8-1.4 | 0.6-1 | 0.5-0.9 | 0.3-0.5 | 0.2-0.5 | 0.2-0.3 | 0.1-0.3 | | | | | |
| | | 12kW | 9-11 | 5-7.5 | 3.5-5.5 | 3.5-5 | 3.3-4.8 | 3.0-4.2 | 2.5-3.5 | 2.2-2.7 | 1.2-2.1 | 1.7-1.9 | 1.2-1.7 | 1.0-1.8 | 0.6-1.5 | 0.5-1.2 | 0.3-1.0 | 0.3-0.7 | 0.2-0.4 | 0.2-0.3 | 0.15-0.25 | | | | | | | |
| | | 6000W | 8-10 | 5-7.5 | 3.5-5 | 3.0-4.5 | 3.0-4.2 | 2.5-3.5 | 2.2-3.2 | 1.8-2.5 | 1.2-2.1 | 1.2-1.8 | 0.8-1.5 | 0.6-1.2 | 0.5-0.8 | 0.3-0.55 | 0.2-0.3 | | | | | | | | | | | |
| | | 3000W | 8.0-10 | 5.5-7.5 | 3.0-4.0 | 2.8-3.5 | 2.6-3.2 | 2.5-2.6 | 1.6-1.8 | 1.4-1.6 | 1.0-1.4 | 0.8-0.9 | 0.7-0.8 | 0.6-0.7 | 0.5-0.6 | | | | | | | | | | | | | |
| | | Power | Thickness (mm) | 1 | 2 | 3(1/8") | 4 | 5 | 6(1/4") | 8 | 10 | 12(1/2") | 14 | 16 | 18 | 20 | 25(1") | 30 | 35 | 40 | 45 | 50(2") | 60 | 70 | 80 | 90 | 100(4") | 110 |
| Stainless steel (201) #2 | speed m/min | 50kW | 72-100 | 60-75 | 45-65 | 35-45 | 30-35 | 25-30 | 25-30 | 18-22 | 16-18 | 11-15 | 11-13 | 9-11 | 8-10 | 6-7 | 4-5 | 2.8-3.5 | 2-2.5 | 1-1.5 | 0.6-1 | 0.4-0.6 | 0.35-0.5 | 0.2-0.4 | 0.2-0.3 | 0.1-0.2 | 0.1-0.2 | |
| | | 30kW | 72-100 | 50-75 | 38-55 | 30-40 | 25-32 | 20-29 | 15-20 | 12-17 | 9-14 | 7-11 | 5-9 | 3-8 | 3-7 | 2-4.5 | 1.5-3.2 | 1.0-1.5 | 0.8-1.7 | 0.6-1.0 | 0.25-0.5 | 0.2-0.3 | 0.17-0.3 | 0.15-0.3 | 0.1-0.2 | 0.07-0.1 | 0.07-0.1 | |
| | | 22kW | 72-100 | 50-75 | 38-55 | 25-35 | 24-32 | 20-25 | 15-19 | 10-13.5 | 8.0-10 | 6.0-8.5 | 4.0-6.0 | 3.0-3.5 | 2.0-3.0 | 1.5-2.2 | 1.2-1.5 | 0.4-0.8 | 0.3-0.6 | 0.2-0.6 | 0.2-0.5 | 0.1-0.3 | 0.1-0.3 | 0.1-0.3 | 0.1-0.2 | | | |
| | | 12kW | 70-85 | 40-66 | 35-45 | 20-32 | 18-25 | 12-15 | 8-12 | 6.0-8.0 | 4.0-5.5 | 3.0-6.0 | 2.2-2.8 | 1.2-2.0 | 1.0-1.6 | 0.5-0.8 | 0.3-0.6 | 0.3-0.5 | 0.3-0.5 | 0.2-0.4 | 0.1-0.2 | | | | | | | |
| | | 6000W | 42-52 | 20-33 | 15-22 | 10-15 | 7.0-12 | 4.8-9.0 | 3.0-4.0 | 1.6-2.5 | 0.8-1.5 | 0.6-1.2 | 0.5-1.0 | 0.4-0.8 | 0.3-0.6 | 0.2-0.4 | | | | | | | | | | | | |
| | | 3000W | 30-55 | 12-30 | 6.0-10.0 | 4.0-6.0 | 3.0-5.0 | 2.0-3.2 | 1.0-1.8 | 0.5-0.85 | 0.4-0.5 | | | | | | | | | | | | | | | | | |
| | | Power | Thickness (mm) | 1 | 2 | 3(1/8") | 4 | 5 | 6(1/4") | 8 | 10 | 12(1/2") | 14 | 16 | 18 | 20 | 25(1") | 30 | 35 | 40 | 45 | 50(2") | 60 | 70 | 80 | 90 | 100(4") | |
| Aluminum #2 | speed m/min | 50kW | 70-100 | 40-70 | 35-60 | 30-45 | 22-35 | 18-32 | 12-23 | 7-16 | 4.5-12 | 3-8 | 2.5-6 | 1.8-2.2 | 1.5-2 | 0.8-1.5 | 0.6-1.2 | 0.4-0.9 | 0.4-0.6 | 0.4-0.5 | 0.3-0.4 | 0.2-0.4 | 0.1-0.3 | 0.1-0.3 | 0.1-0.2 | 0.1-0.2 | | |
| | | 30kW | 70-100 | 40-70 | 35-60 | 30-45 | 22-35 | 18-32 | 12-23 | 7-16 | 4.5-12 | 3-8 | 2.5-6 | 1.8-2.2 | 1.5-2 | 0.8-1.5 | 0.6-1.2 | 0.4-0.9 | 0.4-0.6 | 0.4-0.5 | 0.3-0.4 | 0.2-0.4 | 0.1-0.3 | 0.1-0.3 | 0.1-0.2 | 0.1-0.2 | | |
| | | 22kW | 70-100 | 40-70 | 35-60 | 30-43 | 22-35 | 18-28 | 12-20 | 7.0-12.0 | 4.5-6.5 | 3.0-4.0 | 2.5-3.5 | 1.8-2.2 | 1.5-2.0 | 0.8-1.5 | 0.6-1.2 | 0.4-0.9 | 0.3-0.5 | 0.3-0.4 | 0.2-0.4 | 0.2-0.4 | 0.1-0.3 | | | | | |
| | | 12kW | 60-85 | 38-60 | 30-40 | 20-30 | 15-25 | 10-15 | 7.0-12 | 4.5-8.0 | 4.0-5.0 | 1.8-2.7 | 1.5-2.5 | 1.0-1.8 | 0.9-1.5 | 0.6-0.9 | 0.3-0.8 | 0.3-0.6 | 0.3-0.4 | 0.2-0.3 | 0.1-0.2 | | | | | | | |
| | | 6000W | 42-55 | 20-40 | 15-25 | 9.5-12 | 5.0-8.0 | 3.8-5.0 | 2.0-2.5 | 1.0-1.5 | 0.8-1.3 | 0.9-1.2 | 0.5-0.8 | 0.5-0.7 | 0.5-0.7 | 0.3-0.5 | | | | | | | | | | | | |
| | | 3000W | 25-30 | 13-20 | 6.5-7.5 | 3.5-5.0 | 2.5-3.5 | 1.5-2.5 | 0.7-1.0 | | | | | | | | | | | | | | | | | | | |
| | | Power | Thickness (mm) | 1 | 2 | 3(1/8") | 4 | 5 | 6(1/4") | 8 | 10 | 12(1/2") | 14 | 16 | 18 | 20 | 25(1") | 30 | 35 | 40 | 45 | 50(2") | 60 | 70 | 80 | 90 | 100(4") | |
| Brass #2 | speed m/min | 50kW | 65-75 | 40-60 | 30-45 | 25-38 | 22-31 | 15-25 | 12-18 | 8-14 | 5-10 | 4.5-8.5 | 4-6.5 | 3-5.5 | 2-4 | 1.5-3 | 1-1.5 | 0.5-1 | 0.5-0.8 | | | | | | | | | |
| | | 30kW | 65-75 | 40-60 | 30-45 | 25-38 | 22-31 | 15-25 | 12-18 | 8-14 | 5-10 | 4.5-8.5 | 4-6.5 | 3-5.5 | 2-4 | 1.5-3 | 1-1.5 | 0.5-1 | 0.5-0.8 | | | | | | | | | |
| | | 22kW | 65-75 | 40-60 | 25-40 | 20-35 | 20-28 | 12-20 | 9.0-12 | 6.0-10 | 3.0-4.5 | 1.8-4.0 | 1.5-3.0 | 1.0-2.5 | 0.4-2.0 | 0.3-0.5 | 0.2-0.4 | 0.1-0.2 | | | | | | | | | | |
| | | 12kW | 55-65 | 38-42 | 18-30 | 15-20 | 10-15 | 6.0-8.0 | 5.0-7.0 | 4.5-6.0 | 2.4-4.0 | 0.8-1.5 | 0.6-1.2 | 0.4-0.6 | 0.3-0.5 | | | | | | | | | | | | | |
| | | 6000W | 35-45 | 20-30 | 12-18 | 8.0-12.0 | 6.0-8.0 | 3.0-6.5 | 1.6-2.2 | 0.8-1.2 | 0.3-0.5 | 0.3-0.5 | | | | | | | | | | | | | | | | |
| | | 3000W | 20-30 | 6.0-10 | 3.0-8.0 | 2.5-4.0 | 1.5-2.0 | 1.0-1.8 | | | | | | | | | | | | | | | | | | | | |

Packing Photos

| | | |
|--|--|---|
|  |  |  |
| Packing in Factory | In Container | In Container Yard |
| ABOUT BODOR | | |
| A company of over 2,000 people only focusing on fiber laser cutting machines. | | Leading Manufacturer |
| Local Sales & Engineer Service team in American. | | |
| Over 150 backbone researchers only into laser field. | | |
| Bodor Super Factory covers over 60, 000 m². | | World Brand |
| Exports of fiber laser cutting machine are No.1 in China. | | |
| Users of over 150 countries are happy with Bodor. | | Honors |
| Bodor gains patents and certifications (CSA, cTUVus, CE, FDA, ISO 9001, BV, SGS, etc.) | | |
|  | | |
| Won the German IF Award at the International Industry Awards in 2019. Won the German Red Dot Award at the International Industry Awards in 2018. Won the China Red Star Design Award, National High-tech Zone Gazelle Enterprise in 2016. International awards 10+; industry awards 50+; patent certificates 130+. | | |
|    | | |
| Bodor China | | |



Bodor USA

