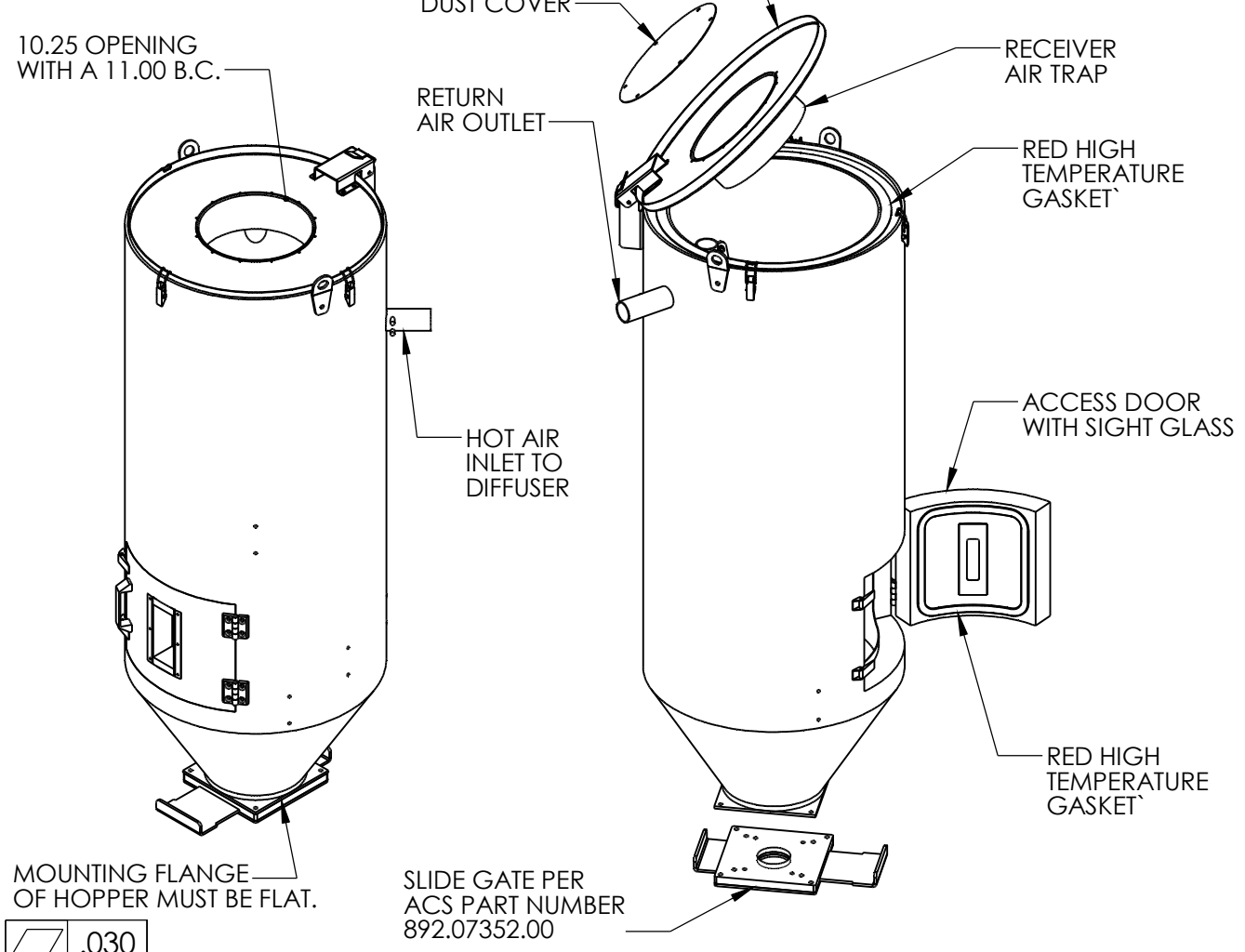
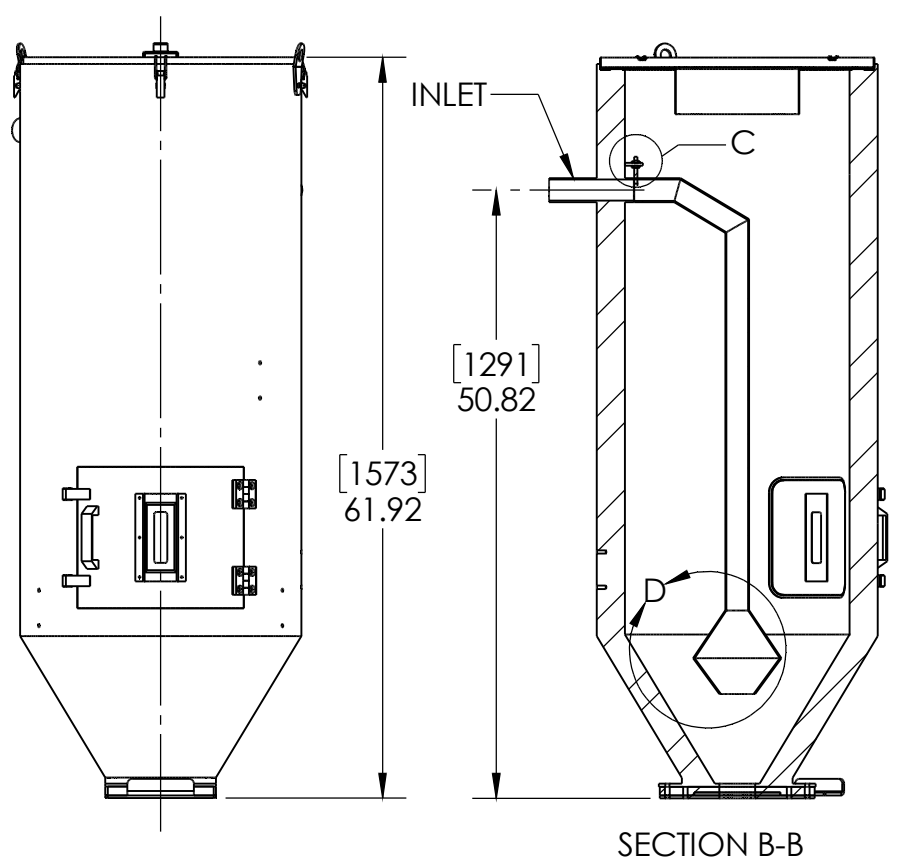
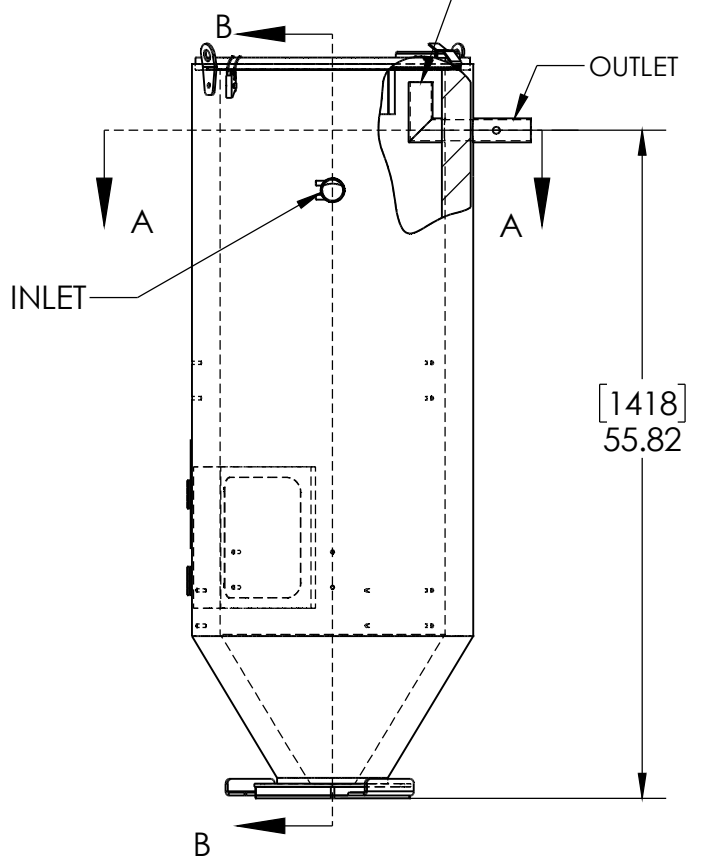
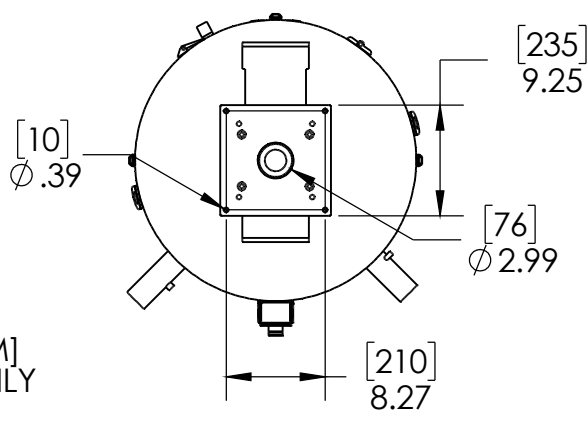
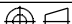



- NOTES:
1. PURCHASED COMPLETE INSULATED STAINLESS STEEL DRYING HOPPER DESIGNED AND BUILT SPECIFICALLY FOR ACS. REFERENCE YUDO DRAWING PD00-0500-A13(A). AS A PURCHASED COMPLETE HOPPER, NOT ALL OF THE COMPONENTS OR ASSEMBLY FEATURES ARE SHOWN ON THIS DRAWING.
 2. THE FOLLOWING PRODUCT CHARACTERISTICS ACS HAS IDENTIFIED AS REQUIRED:
 - NO INTERFERENCE OR CONTACT ALLOWED BETWEEN AIR TRAP AND INLET/OUTLET TUBES WHEN UNIT IS CLOSED.
 - ALL WELDS TO BE FULL, NO STITCH WELDING.
 - THE GAP BETWEEN THE HOPPER'S MOUNTING FLANGE AND THE SLIDE GATE CANNNOT EXCEED .030"(.76mm).
 3. THE FOLLOWING FEATURES ARE SPECIAL REQUEST FROM ACS:
 - SLIDE GATE DESIGN MUST BE IN ACCORDANCE WITH ACS PART NUMBER 892.07352.00. WHEN INSPECTED AS AN ASSEMBLED UNIT, THE MUST MUST SLIDE SMOOTHLY, WITHOUT BINDING, OVER THE FULL LENGTH OF THE BASE PLATE CHANNEL.
 - ADD BLUE LOCTITE 242 TO DIFFUSER HARDWARE AT INLET. SEE DETAIL -C-.
 - LOWER SECTION OF DIFFUSER MUST BE OPEN, WITHOUT A LEDGE FOR MATERIAL TO COLLECT. SEE DETAIL -D-.



- NOTES:
- DIMENSIONS IN BRACKETS ARE IN [MM]
 - DIMENSIONS ARE FOR REFERENCE ONLY



SEE NOTE 2				REV			DESCRIPTION			ECN	NAME	DATE	
				C			UPDATED DRAWING TO REFLECT INCOMING PRODUCT. ADDED SHEET 2				TFC	04/06/2017	
THIS DOCUMENT IS PROPRIETARY. NO DISCLOSURE, REPRODUCTION OR USE OF ANY PART THEREOF MAY BE MADE WITHOUT THE EXPRESSED WRITTEN PERMISSION OF ACS GROUP. (V-01)													
PART NO:				802.00222.00			NAME		DATE		<div> THIRD ANGLE PROJECTION</div> <div></div>		
MATERIAL		MACHINE TOLERANCES UNLESS OTHERWISE SPECIFIED: DIMENSIONS ARE IN INCHES		FABRICATION TOLERANCES UNLESS OTHERWISE SPECIFIED: DIMENSIONS ARE IN INCHES		DRAWN		TFC		02/26/2015			
FINISH						CHECKED		JEF		03/24/2015			
SIMILAR TO						ENG APPR.							
MADE FROM		TOLERANCES: ANGULAR: MACHINED SURFACE: ±0° - 15 SPECIFIED CHAMFERS ±5°		TOLERANCES: ANGULAR DIMENSIONS ±1° FRACTIONS ±1/32		PRODUCT FAMILY Drying		PRODUCT CATEGORY		TITLE HPR,WH200 PURCHASED COMPLETE			
HEAT TREAT		TWO PLACE DECIMAL ±0.01 THREE PLACE DECIMAL ±0.005 FOUR PLACE DECIMAL ±0.0005		TWO PLACE DECIMAL ±0.06 THREE PLACE DECIMAL ±0.030									
SHEET: 1 OF 2				WEIGHT 308.60		DRAWING MAY NOT BE PRINTED TO SCALE. SCALE: 1:16		DWG NO. 802.00222.00					REV C



HPR,WH200
PURCHASED
COMPLETE