

U. S. INDUSTRIAL MACHINERY

P.O. Box 2098 Memphis, TN 38101
 Phone: (800) 860-1850 Fax: (901) 526-2339
www.usindustrial.com

Dear Customer:

Thank you for the opportunity to quote. We are pleased to offer the following equipment for your consideration:

NEW – U.S. Industrial Model USG1224-SY TOOLROOM SURFACE GRINDER as configured below:

Description: This is a medium duty toolroom Surface Grinder with hydraulic reciprocation of table and electric motor power increment setting for crossfeed. There is power elevation to spindle. Grind depth is manually set by operator. This is a TWO-AXIS Automatic Surface Grinder

Standard Equipment:

- | | |
|---|-------------------------------|
| Grinding wheel | Wheel flange |
| Balancing base and arbor | Toolbox and tools |
| Over wheel dresser w/diamond | Coolant system |
| Manual one-shot lube | Sino Two-axis digital readout |
| Permanent Magnetic Chuck: 11.8" x 23.6" | |

Model USG1224-SY.....	\$	24,990.00
Semi Fine Pole Permanent Chuck, 11.8" x 23.6".....	Included	
Wet coolant system.....	Included	
Sino two axes DRO installed.....	Included	
Hydraulic reciprocation of table.....	Included	
Electric motorized crossfeed.....	Included	
Power elevation to spindle.....	Included	
Overwheel (Parallel) diamond dresser.....	Included	

TOTAL PRICE.....F.O.B. Memphis, TN.... \$ 24,990.00

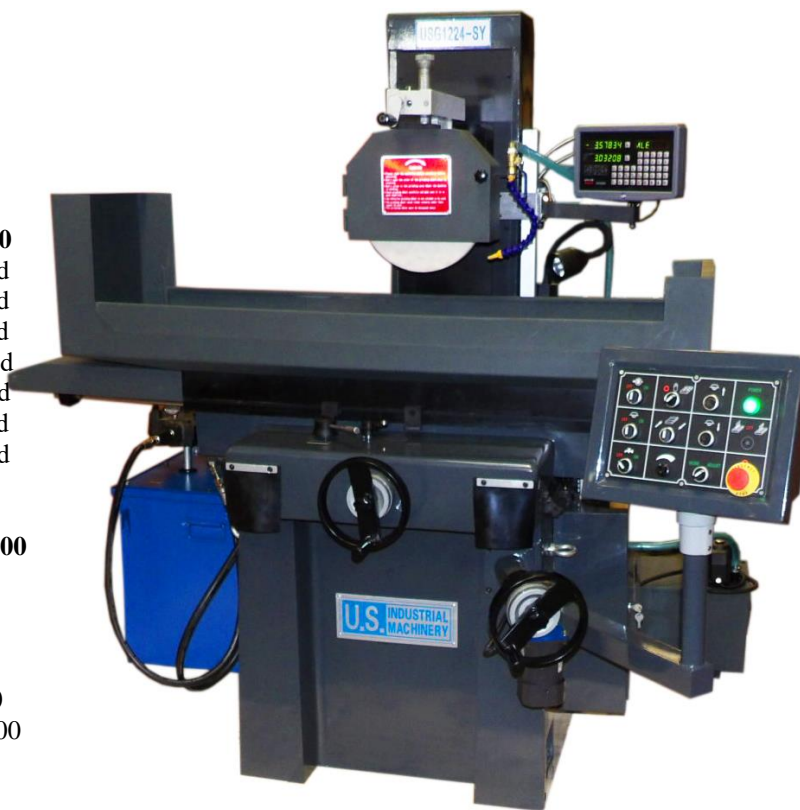
Voltage is 220 or 440 Volts, 3 phase, customer choice.

Options:

Extra general purpose factory grinding wheel.....	\$ 72.00
Extra wheel flange.....	\$ 120.00

MAIN SPECIFICATIONS

Parallelism & Flatness Accuracy:	<0.0008"
Max. Travel (Longitudinal x Cross):	24.8" x 12.6"
Max. Distance Spindle Center To Table:.....	20.5"
Max Grinding Wheel (ODxTxID):.....	300mm x 76.2mm x 30mm
(Supplied with one 12" x 1-1/4" grinding wheel)	
Grinding Wheel speed:.....	1680 rpm
Spindle Motor:.....	3 HP
Hyd. unit Motor.....	3 HP
Machine weight.....	3,400 lbs (Gross Shipping)
Dimension, crated for shipping.....	56"W x 72"L x 76"T



Page 2 – USG1224-SY Surface Grinder

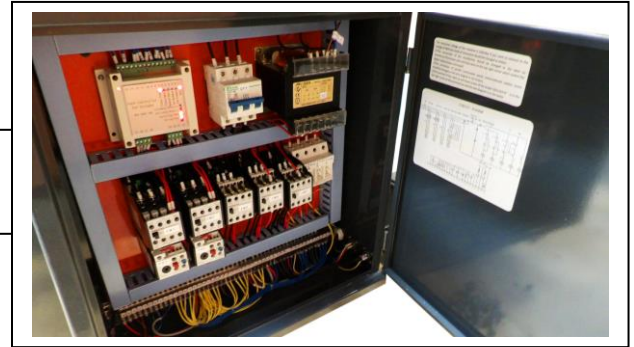


Detail showing permanent magnetic chuck, over wheel diamond dresser, 2-axis digital readout display, flood coolant nozzle



Detail of manual fine adjustment of downfeed with 0.0004" graduations. Wheelhead Elevation Motor shown.

Detail showing electrical cabinet, with disconnect and fuse holders.



Detail showing control panel with reciprocation and electric motor table crossfeed control selection. Also with motorized wheelhead elevation.



Thank you for the opportunity to quote. We look forward to serving you.

Sincerely,

U. S. Industrial Machinery

October 2021