

ENPROTECH TO APPROVE PRESS INFO & MOUNTING DIMENSIONS  
 APPROVED AND UNDERSTOOD TO BE IN COMPLIANCE WITH THE SPECIFICATIONS PROVIDED AND ANY CHANGES SO NOTED.  
 CO. NAME \_\_\_\_\_ DATE \_\_\_\_\_  
 BY \_\_\_\_\_ TITLE \_\_\_\_\_

NOTE: LUBRICATOR ADJUSTS UP TO 1.50" FOR CHAIN TAKE-UP

PRESS COLUMN  
 11.25\*  
 23.00  
 18.00  
 3.88\*  
 53.00 ±5.00 PLH  
 40.56\*  
 1-1/2" THICK TAPPED PAD ON COLUMN BY ENPROTECH  
 37.00\*

\*DIMENSIONS TO BE CONFIRMED BY CUSTOMER

SEE PRESS MOUNTING BRACKET DETAIL - PAGE 2

ELECTROLUX HOME PRODUCTS  
 APPROVED AND UNDERSTOOD TO BE IN COMPLIANCE WITH THE SPECIFICATIONS PROVIDED AND ANY CHANGES SO NOTED.  
 CO. NAME \_\_\_\_\_ DATE \_\_\_\_\_  
 BY \_\_\_\_\_ TITLE \_\_\_\_\_

ELEVATION VIEW OVERALL LENGTH 308.42

PRESS NUMBER	NEW FEED LINE NUMBER	FORMTEK SERIAL NUMBER	ORIGINAL FEED LINE NUMBER
PRS0010	FLN0010	C27389	FLN0010

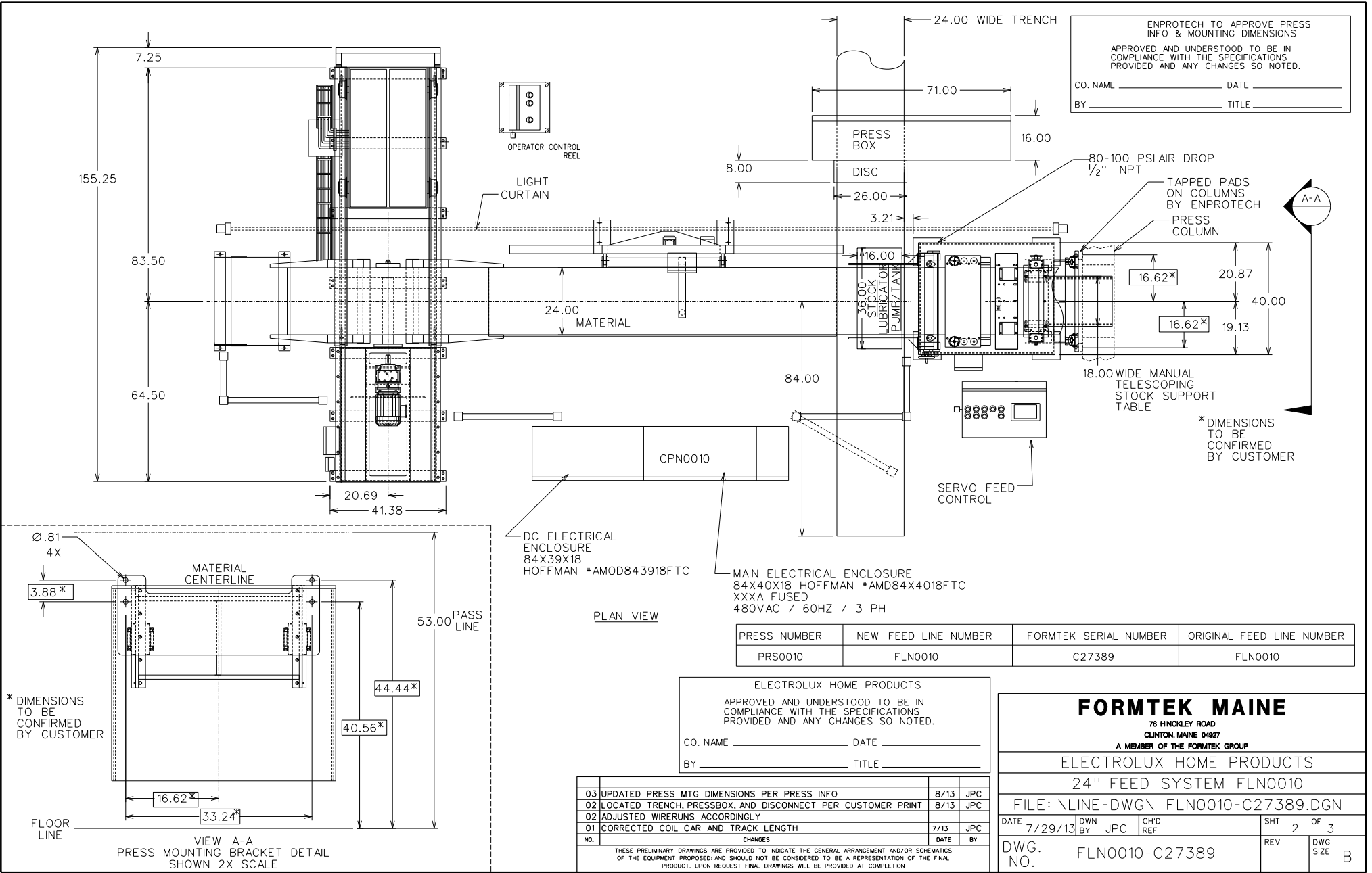
- EQUIPMENT SPECIFICATIONS** NOTE: SEE QUOTE FOR COMPLETE SPECIFICATIONS
- 1) MODEL SMX24 SERVO-ELECTRIC ROLLFEED WITH ADJUSTABLE HEIGHT CABINET, HANDWHEEL EDGE GUIDES, STOCK LUBRICATOR, AUTOLUBE, AND TELESCOPING STOCK SUPPORT TABLE
  - 2) MODEL SM5-24 PULL THRU STRAIGHTENER WITH SMOOTH CHROME STRA. ROLLS, MATTE CHROME PINCH ROLLS, AND 2" ROLL OPENING
  - 3) MODEL 4.5RM-24 PLAIN STOCK REEL WITH SPRING-SET BRAKE, EXPANSION RANGE OF 15.50-20.50", POSITIONING SCALE, AND CLOCKSRING GUARD
  - 4) MODEL 10036 COIL LOADING CAR WITH 24" LIFT
- CHANGES**
- 01) CORRECTED COIL CAR AND TRACK LENGTH 7/13 JPC
  - 02) LOCATED TRENCH, PRESSBOX, AND DISCONNECT PER CUSTOMER PRINT. ADJUST WIRE RUNS ACCORDINGLY 8/13 JPC
  - 03) UPDATED PRESS MOUNTING DIMENSIONS PER PRESS INFORMATION PROVIDED. 8/13 JPC

**FORMTEK MAINE**  
 78 HINCKLEY ROAD  
 CLINTON, MAINE 04927  
 A MEMBER OF THE FORMTEK GROUP

ELECTROLUX HOME PRODUCTS  
 24" FEED SYSTEM FLN0010

FILE: \LINE-DWG\ FLN0010-C27389.DGN

DATE	7/29/13	OWN BY	JPC	CH'D REF	SHT	1	OF	3
DWG. NO.	FLN0010-C27389			REV		DWG SIZE	B	



ENPROTECH TO APPROVE PRESS INFO & MOUNTING DIMENSIONS  
 APPROVED AND UNDERSTOOD TO BE IN COMPLIANCE WITH THE SPECIFICATIONS PROVIDED AND ANY CHANGES SO NOTED.  
 CO. NAME \_\_\_\_\_ DATE \_\_\_\_\_  
 BY \_\_\_\_\_ TITLE \_\_\_\_\_

\* DIMENSIONS TO BE CONFIRMED BY CUSTOMER

\* DIMENSIONS TO BE CONFIRMED BY CUSTOMER

PLAN VIEW

VIEW A-A  
 PRESS MOUNTING BRACKET DETAIL  
 SHOWN 2X SCALE

DC ELECTRICAL ENCLOSURE  
 84X39X18  
 HOFFMAN \*AMOD843918FTC

MAIN ELECTRICAL ENCLOSURE  
 84X40X18 HOFFMAN \*AMD84X4018FTC  
 XXXA FUSED  
 480VAC / 60HZ / 3 PH

PRESS NUMBER	NEW FEED LINE NUMBER	FORMTEK SERIAL NUMBER	ORIGINAL FEED LINE NUMBER
PRS0010	FLN0010	C27389	FLN0010

ELECTROLUX HOME PRODUCTS  
 APPROVED AND UNDERSTOOD TO BE IN COMPLIANCE WITH THE SPECIFICATIONS PROVIDED AND ANY CHANGES SO NOTED.  
 CO. NAME \_\_\_\_\_ DATE \_\_\_\_\_  
 BY \_\_\_\_\_ TITLE \_\_\_\_\_

**FORMTEK MAINE**  
 76 HINCKLEY ROAD  
 CLINTON, MAINE 04927  
 A MEMBER OF THE FORMTEK GROUP

ELECTROLUX HOME PRODUCTS  
 24" FEED SYSTEM FLN0010

FILE: \LINE-DWG\ FLN0010-C27389.DGN

DATE	7/29/13	DWN BY	JPC	CH'D REF		SHT	2	OF	3
DWG. NO.	FLN0010-C27389				REV		DWG SIZE	B	

NO.	CHANGES	DATE	BY
03	UPDATED PRESS MTC DIMENSIONS PER PRESS INFO	8/13	JPC
02	LOCATED TRENCH, PRESSBOX, AND DISCONNECT PER CUSTOMER PRINT	8/13	JPC
02	ADJUSTED WIRERUNS ACCORDINGLY		
01	CORRECTED COIL CAR AND TRACK LENGTH	7/13	JPC

THESE PRELIMINARY DRAWINGS ARE PROVIDED TO INDICATE THE GENERAL ARRANGEMENT AND/OR SCHEMATICS OF THE EQUIPMENT PROPOSED AND SHOULD NOT BE CONSIDERED TO BE A REPRESENTATION OF THE FINAL PRODUCT. UPON REQUEST FINAL DRAWINGS WILL BE PROVIDED AT COMPLETION