

# ESCO® Rigging Product Specifications

**WEIR**

ESCO









## Contents

---

Information for ESCO® rigging products .....	4
Definitions .....	5
Stainless steel swage sleeves .....	7
Plain carbon steel sleeves for Flemish eyes .....	10
Zinc chromate coated steel sleeves for Flemish eyes ...	11
Holerite® stainless steel cast swage sockets .....	12
ESCO open and closed galvanized spelter sockets .....	15
Big-D™ anchor pendant sockets .....	18
Cast and machined ferrules and end fittings .....	19
ESCO tractor logging hardware .....	23
ESCO logging and forestry hardware .....	24
Industrial rigging hardware .....	26
Socketfast® resin socketing media .....	28
Socketfast® reference volumes .....	29
Swaging dies .....	30
Die wear gauges .....	33
ESCO swagers .....	35

## Information for ESCO® rigging products

All ESCO rigging products are sold with the express understanding that the purchaser is thoroughly familiar with the correct application and safe use of the product. Responsibility for the use and application of the products rests with the user.

Any product will fail if it is abused, misapplied, worn out, or improperly maintained. Failure can cause loads to swing or fall out of control, and may result in personal injury or death, as well as property damage.

There is information contained in this catalog presented in the two formats shown below.

**⚠ WARNING:** *A statement preceded by “WARNING” is information that should be acted upon to prevent serious injury or death.*

**IMPORTANT:** *A statement preceded by the word “IMPORTANT” is information that possesses special significance.*

**⚠ WARNING:** *Do not weld or modify fittings. ESCO swage fittings are designed to be mechanically attached to the wire rope using ESCO Swage Dies and Procedures. For proper instruction refer to ESCO Swaging Instruction Manual (P6000RIG).*

**⚠ WARNING:** *All ESCO swage sleeves are designed for use with 6 x 19 class or 6 x 37 class, right regular lay, EIP, IWRC wire rope manufactured to US specifications. If other constructions of wire rope is used with these fittings, the fabricator should make up and test sample assemblies to make sure they will perform adequately in the intended application. For complete instructions on how to install and swage ESCO sleeves, refer to the ESCO Swaging Instruction Manual (P6000RIG).*

**⚠ WARNING:** *Never exceed the working load limit as stated by the wire rope manufacturer.*

*Refer to these two industry standard publications: Wire Rope Users Manual and Wire Rope Sling Users Manual (available at [www.wireropetechnicalboard.org](http://www.wireropetechnicalboard.org)).*

**⚠ WARNING:** *When recommended wire rope sizes are shown in this catalog, ESCO hardware is rated for use only with those sizes.*

**⚠ WARNING:** *Do not use ferrules for suspending loads. Ferrules are not intended for use in applications where loads are fully suspended overhead except in some log harvesting systems where adequate precautions are taken.*

**⚠ WARNING:** *All ESCO wedge-type ferrules with six strand wedges are designed for use with 6 x 19 class or 6 x 37 class; or with seven strand wedges are designed for use with 7 x 19 or 7 x 37 class, right regular lay, EIP, IWRC wire rope, manufactured to US specifications.*

**⚠ WARNING:** *Use drumline ferrules only in winchline-drum applications. Drumline ferrules are intended only for use in holding the winchline in the winch drum pocket. Drumline ferrules must not be used as choker ferrules or for any other purpose than intended. When using drumline ferrules, at least 3 windings of the winchline must remain on the winch drum to avoid direct strain on the drumline ferrules.*

**IMPORTANT:** *Magnetic Permeability – The magnetic permeability of ESCO 40SS alloy is in the range of 1.2-3.° yn/A2. The range being due to the change from unswaged to the swaged condition. ESCO 40SS alloy is a cast equivalent to AISI304.*

## Definition

**Sleeves** are fittings used to form eyes or loop terminations at the end of a piece of wire rope. They are designed to contain two parts of wire rope at the base of the eye or loop to hold the eye or loop in place.

**Duplex** refers to swage sleeves intended for use with double-back, fold back, returned loops, or turn back eyes formed by laying the wire rope on itself to form a loop.

**Single** refers to swage sleeves intended for use with rolled, Farmers, or Flemish eyes formed by unlaying the strands of wire rope, crossing the strands and relaying the strands around themselves to form a loop.

**Ferrules** are fittings used to form a holding point on a piece of wire rope. Ferrules are also called stops, buttons, knobs, or end fittings. Ferrules are designed to fit one part of wire rope and may be applied with zinc, with Socketfast, with wedges, or by swaging.

**Sockets** are bail, clevis, or pin eye terminals attached at the end of a single part of wire rope. Sockets are designed to fit one part of wire rope and may be applied with zinc, with SOCKETFAST, or by swaging.

**All ratings** refer to short tons of 2000 pounds unless otherwise noted.

**Working Load Limit** is the maximum force a new or as new product is authorized to support in service when the pull is uniformly applied in line with the centerline of the product.

**Proof Load** is the average force applied when performing a proof test (the average force to which a product may be subjected before deformation occurs). Proof Load is usually twice the working load limit.

**Ultimate Load** is the average force at which the product fails and no longer supports the load.

**Shock Load** is a force that results from a rapid application of a load (such as impacting or jerking). Shock loads add significantly to the force a product is subjected to and should be avoided.

**Design Factor** describes the relative reserve capacity of a load carrying component. It is usually expressed as the ratio of the **Ultimate Load** to the **Working Load**, i.e. 5 to 1 or 5:1.

ESCO Rigging products are designed to be used with and tested with Wire Rope conforming to the following description; new 6 x 19 or 6 x 37 Class, EIP, IWRC, Right Regular Lay, Wire Rope made to US specifications.

### Abbreviations

**OC** - Open Channel Die

**Taper** - Taper Die

**Forged** - Forged Socket Die

**FE Midget** - Front Entry Midget Pocket Die

**ST Midget** - Straight Thru Side Entry Pocket Die

**ST Dwarf** - Straight Thru Side Entry Pocket Die

**FE Bantam** - Front Entry Bantam Pocket Die

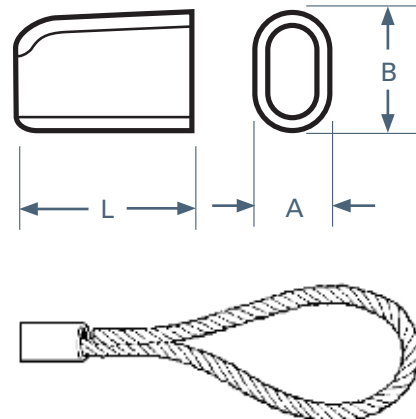
**ST Bantam** - Straight Thru Side Entry Pocket Die

**SE Light** - Side Entry Light Pocket Die

**SE Junior** - Side Entry Junior Pocket Die



## Stainless steel swage sleeves

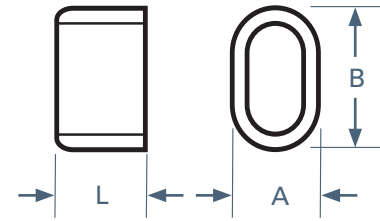
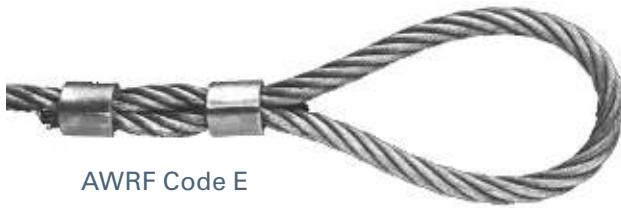


### One Piece Sleeves for Duplex Eyes

Part Number	Rope Size	Weight Each	Before Swage			After Swage		Die Description	Box Qty.
			Length (L)	Width (A)	Height (B)	Length	Diameter		
4005970*	1/8"	0.03	7/16"	1/4"	3/8"	1/2"	0.26	1/8" OC	100
4005961*	3/16"	0.03	1/2"	3/8"	9/16"	9/16"	0.38	3/16" OC	100
4005962*	1/4"	0.04	7/8"	1/2"	3/4"	1"	0.53	1/4" OC	100
5128245	1/4"	0.04	1"	1/2"	3/4"	1-1/8"	0.53	1/4" OC	100
5103273	5/16"	0.18	1-19/32"	25/32"	1-1/8"	1-9/16"	0.76	3/8" OC	100
5103270	3/8"	0.14	1-23/32"	13/16"	1-1/8"	1-7/8"	0.76	3/8" OC	100
5103262	7/16"	0.35	2-1/32"	1-1/32"	1-7/16"	1-15/16"	1.01	1/2" OC	100
5103261	1/2"	0.31	2"	1"	1-7/16"	2-1/4"	1.01	1/2" OC	100
5103272	9/16"	0.6	2-1/4"	1-1/4"	1-3/4"	2-1/2"	1.27	5/8" OC	50
5103269	5/8"	0.6	2-23/32"	1-1/4"	1-13/16"	2-5/8"	1.27	5/8" OC	50
5103271	3/4"	1	3"	1-7/16"	2-1/8"	3-3/8"	1.53	3/4" OC	25
5103263	7/8"	1.5	3-3/4"	1-23/32"	2 13/32"	4-13/64"	1.76	7/8" OC	25
5103268	1"	2	3-3/4"	2"	2 13/16	4-1/4"	2.04	1" OC	25

Swage in ESCO® open channel dies.

\*Formed tubing.



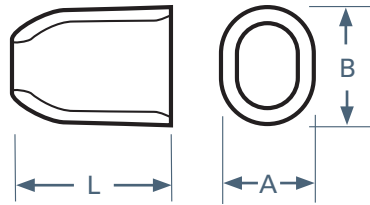
### Two Piece Sleeves for Duplex Eyes (sold each, NOT in pairs)

Part Number	Rope Size	Weight Each	Before Swage			After Swage		Die Description	Box Qty.
			Length (L)	Width (A)	Height (B)	Length	Diameter		
5108922	1/2"	0.2	1-1/16"	15/16"	1-3/8"	1-1/8"	1.01	1/2" OC	100
5108923	9/16"	0.3	1-1/4"	1-3/16"	1-11/16"	1-7/16"	1.27	5/8" OC	100
5103275	5/8"	0.3	1-1/16"	1-5/16"	1-13/16"	1-3/16"	1.27	5/8" OC	100
5108652	3/4"	0.5	1-3/16"	1-3/8"	2-1/8"	1-7/16"	1.53	3/4" OC	100
5103274	7/8"	0.7	1-3/8"	1-3/4"	2-1/2"	1-5/8"	1.76	7/8" OC	50
5103264	1"	1	1-9/16"	1-13/16"	2-3/4"	1-13/16"	2.04	1" OC	50
5103265	1-1/8"	1.5	1-7/8"	2"	3-3/16"	2-1/8"	2.26	1-1/8" OC	30
5104997	1-1/4"	2	2-1/8"	2-3/8"	3-3/8"	2-1/2"	2.51	1-1/4" OC	20
5105001	1-3/8"	2	2-1/8"	2-5/16"	3-9/16"	2-1/2"	2.51	1-1/4" OC	20
5104996	1-1/2"	2	2-1/4"	2-1/2"	3-7/8"	2-5/8"	2.70	1-1/2" OC	20
5105002	1-5/8"	3	2-3/8"	2-13/16"	4-5/16"	2-3/4"	3.08	1-3/4" OC	--
5105000	1-3/4"	3.3	2-1/2"	2-13/16"	4-7/16"	2-7/8"	3.08	1-3/4" OC	--
5105003	2"	4.3	2-7/8"	3-3/16"	5"	3-1/4"	3.52	2" OC	--
5105005	2-1/4"	6.5	3-1/8"	3-3/4"	5-11/16"	3-5/8"	4.02	2-1/4" OC	--
5105004	2-1/2"	7.5	3-1/8"	4"	6-3/8"	3-5/8"	4.39	2-1/2" OC	--

Swage in ESCO® open channel dies.

Two sleeves required per eye.





### Single Sleeves for Flemish Eyes

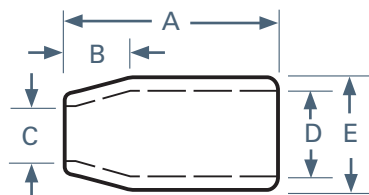
Part Number	Rope Size	Weight Each	Before Swage			After Swage		Die Description	Box Qty.
			Length (L)	Width (A)	Height (B)	Length	Diameter		
5103281	5/16"	0.2	1-5/8"	13/16"	1-1/16"	1-15/16"	0.76	3/8" OC	100
5135278	3/8"	0.2	1-7/8"	13/16"	1-1/16"	2-1/4"	0.76	3/8" OC	100
5103260	7/16"	0.3	1-7/8"	1-1/16"	1-5/16"	2-1/16"	1.01	1/2" OC	100
5103259	1/2"	0.3	2-1/2"	1-1/16"	1-3/8"	2-11/16"	1.01	1/2" OC	100
5103248	5/8"	0.8	2-3/8"	1-7/16"	1-11/16"	2-9/16"	1.27	5/8" OC	50
5103247	3/4"	1	2-3/4"	1-11/16"	2-3/16"	3"	1.53	3/4" OC	50
5103249	7/8"	1.5	3-1/4"	1-7/8"	2-3/8"	3-3/4"	1.76	7/8" OC	25
5103250	1"	2.2	3-9/16"	2-1/8"	2-11/16"	3-3/4"	2.04	1" OC	20
5103266	1-1/8"	2.8	3-3/4"	2-5/16"	3-3/16"	4-3/8"	2.26	1-1/8" OC	15
5103290	1-1/4"	2.5	3-7/8"	2-5/16"	2-15/16"	4-5/8"	2.26	1-1/8" OC	15
5104994	1-3/8"	3.5	4-1/8"	2-13/16"	3-5/16"	4-7/8"	2.51	1-1/4" OC	--
5104992	1-1/2"	3.8	4-7/16"	2"	3-7/16"	5-1/4"	2.70	1-1/2" OC	--
5104993	1-3/4"	7	5-1/4"	3-1/8"	4-3/16"	6-1/8"	3.08	1-3/4" OC	--
5104995	2"	8	6"	3-9/16"	4-7/8"	6-5/8"	3.52	2" OC	--

Swage in ESCO® open channel dies.

## Plain carbon steel sleeves for Flemish eyes



AWRF Code E



### Plain Carbon Steel Sleeves for Flemish Eyes

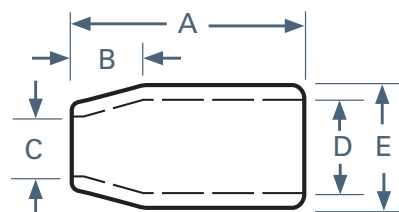
Part Number	Rope Size	Weight Each	Before Swage					After Swage Diameter	Die Description	Box Qty.
			A	B	C	D	E			
4058006	1/4"	0.05	1"	1/4"	3/8"	7/16"	11/16"	0.57	1/4" Taper	100
4058007	5/16"	0.17	1-1/2"	7/16"	7/16"	5/8"	15/16"	0.77	3/8" Taper	100
4058008	3/8"	0.14	1-1/2"	7/16"	1/2"	11/16"	15/16"	0.77	3/8" Taper	100
4058009	7/16"	0.32	2"	5/8"	9/16"	7/8"	1-1/4"	1.02	1/2" Taper	100
4058010	1/2"	0.24	2"	5/8"	5/8"	7/8"	1-1/4"	1.02	1/2" Taper	100
4058011	9/16"	0.42	2-3/4"	11/16"	11/16"	1"	1-1/2"	1.23	5/8" Taper	50
4058012	5/8"	0.5	2-3/4"	11/16"	3/4"	1-1/8"	1-1/2"	1.23	5/8" Taper	50
4017630	3/4"	0.9	3-3/16"	13/16"	15/16"	1-5/16"	1-3/4"	1.45	3/4" Taper	50
4015387	7/8"	1.4	3-9/16"	15/16"	1-1/16"	1-1/2"	2"	1.70	7/8" Taper	25
4015388	1"	2	4"	1-1/4"	1-1/8"	1-3/4"	2-5/16"	1.89	1" OC/1" Taper	20
4015389	1-1/8"	2.6	4-5/8"	1-5/16"	1-1/4"	1-15/16"	2-1/2"	2.10	1-1/8" OC/1-1/8" Taper	10
4015390	1-1/4"	3.4	5-1/4"	1-3/8"	1-7/16"	1-3/16"	2-13/16"	2.30	1-1/4" OC/1-1/4" Taper	10
4015391	1-3/8"	4	5-7/8"	1-9/16"	1-1/2"	2-3/8"	3"	2.52	1-1/2" OC/1-3/8" Taper	--
4015392	1-1/2"	5.2	6-5/16"	1-3/4"	1-11/16"	2-5/8"	3-1/4"	2.67	1-1/2" OC/1-1/2" Taper	--
4015393	1-3/4"	8.1	7-1/4"	1-15/16"	2"	3-1/8"	3-7/8"	3.08	2" OC/1-3/4" Taper	--
4015394	2"	11.25	8-1/2"	2-1/4"	2-3/16"	3-5/8"	4-3/8"	3.52	2-1/4" OC/2" OC	--
4015395	2-1/2"	23.5	10-1/2"	2-3/4"	2-7/8"	4-1/2"	5-1/2"	4.46	1st Stage OC/2nd Stage OC	--

Swage in ESCO® tapering dies.

## Zinc chromate coated steel sleeves for Flemish eyes



AWRF Code E

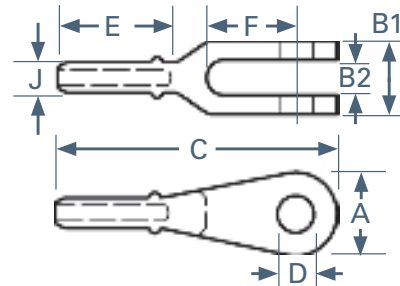


### Zinc Chromate Coated Carbon Steel Sleeves For Flemish Eyes

Part Number	Rope Size	Weight Each	Before Swage					After Swage Diameter	Die Description	Box Qty.
			A	B	C	D	E			
4134034	1/4"	0.05	1"	1/4"	3/8"	7/16"	11/16"	0.57	1/4" Taper	100
4134035	5/16"	0.17	1-1/2"	7/16"	7/16"	5/8"	15/16"	0.77	3/8" Taper	100
4134036	3/8"	0.14	1-1/2"	7/16"	1/2"	11/16"	15/16"	0.77	3/8" Taper	100
4134037	7/16"	0.32	2"	5/8"	9/16"	7/8"	1-1/4"	1.02	1/2" Taper	100
4134038	1/2"	0.24	2"	5/8"	5/8"	7/8"	1-1/4"	1.02	1/2" Taper	100
4134039	9/16"	0.42	2-3/4"	11/16"	11/16"	1"	1-1/2"	1.23	5/8" Taper	50
4134040	5/8"	0.5	2-3/4"	11/16"	3/4"	1-1/8"	1-1/2"	1.23	5/8" Taper	50
4134041	3/4"	0.9	3-3/16"	13/16"	15/16"	1-5/16"	1-3/4"	1.45	3/4" Taper	50
4134042	7/8"	1.4	3-9/16"	15/16"	1-1/16"	1-1/2"	2"	1.70	7/8" Taper	25
4134043	1"	2	4"	1-1/4"	1-1/8"	1-3/4"	2-5/16"	1.89	1" OC/1" Taper	20
4134044	1-1/8"	2.6	4-5/8"	1-5/16"	1-1/4"	1-15/16"	2-1/2"	2.10	1-1/8" OC/1-1/8" Taper	10
4134045	1-1/4"	3.4	5-1/4"	1-3/8"	1-7/16"	1-3/16"	2-13/16"	2.30	1-1/4" OC/1-1/4" Taper	10
4134046	1-3/8"	4	5-7/8"	1-9/16"	1-1/2"	2-3/8"	3"	2.52	1-1/2" OC/1-3/8" Taper	--
4134047	1-1/2"	5.2	6-5/16"	1-3/4"	1-11/16"	2-5/8"	3-1/4"	2.67	1-1/2" OC/1-1/2" Taper	--
4134048	1-3/4"	8.1	7-1/4"	1-15/16"	2"	3-1/8"	3-7/8"	3.08	2" OC/1-3/4" Taper	--
4134049	2"	11.25	8-1/2"	2-1/4"	2-3/16"	3-5/8"	4-3/8"	3.52	2-1/4" OC/2" OC	--
4134050	2-1/2"	23.5	10-1/2"	2-3/4"	2-7/8"	4-1/2"	5-1/2"	4.46	1st Stage OC/2nd Stage OC	--

Swage in ESCO® tapering dies.

## Holerite® stainless steel cast swage socket



### Open Sockets

Part Number	Rope Size	Weight Each	Pin Weight	Pin Diameter	A	B1	B2	Overall Length C	Pin Hole D	E*	F	Die Description
4002382	5/16"	1.7	0.50	13/16"	1-11/16"	1-5/8"	13/16"	6"	7/8"	2	1-3/4"	3/8" OC
4181353	3/8"	1.7	0.50	13/16"	1-11/16"	1-5/8"	13/16"	6"	7/8"	2	1-3/4"	3/8" OC
4181354	7/16"	3	0.75	1"	2"	2"	1"	7-5/16"	1-1/16"	3	2"	1/2" OC
4179732	1/2"	3	0.75	1"	2"	2"	1"	7-5/16"	1-1/16"	3	2"	1/2" OC
4002388	9/16"	5	1	1-3/16"	2-1/2"	2-3/8"	1-1/4"	8-7/8"	1-1/4"	3-5/8"	2-1/4"	5/8" OC
4002391	5/8"	5	1	1-3/16"	2-1/2"	2-3/8"	1-1/4"	8-7/8"	1-1/4"	3-5/8"	2-1/4"	5/8" OC
4002393	3/4"	9	1.50	1-3/8"	3"	2-3/4"	1-7/16"	10-3/8"	1-7/16"	4-1/8"	2-3/4"	3/4" OC
4002395	7/8"	11.5	2.50	1-5/8"	3-1/2"	3-1/4"	1-3/4"	12-1/2"	1-11/16"	5-1/2"	3-1/4"	3/4" OC
4002397	1"	19	4.50	2"	4"	3-3/4"	2"	14-1/4"	2-1/16"	6-1/2"	3-3/4"	7/8" OC
4002400	1-1/8"	24	6	2-1/4"	4-1/2"	4-1/4"	2-1/4"	17-7/8"	2-5/16"	9"	4-1/4"	1" OC

\*E - Minimum rope insertion length. Swage in ESCO® Open Channel Dies.

**NOTE:** "Before" and "After" swage dimensions (J) are identical to the dimensions shown in the Closed Socket chart shown on page 13.

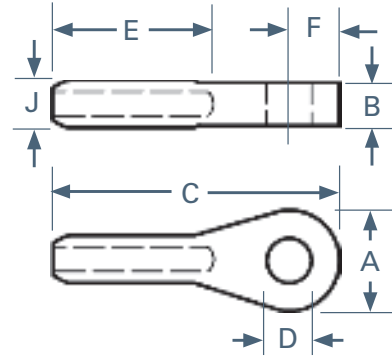
## Swage socket pins

### Open Socket Pins

Part Number Cotter/Pin	Rope Size	Weight Each
4002381-4010572	5/16"-3/8"	0.5
4057865-4010573	7/16"-1/2"	0.8
4002389-4010574	9/16"-5/8"	1
4002389-4010575	3/4"	1.5
4056618-4010576	7/8"	2.5
4056618-4010577	1"	4.5
4002398-4010578	1-1/8"	5

**IMPORTANT:** ESCO cast stainless steel products are cast from a proprietary alloy- 40SS (equivalent to AISI 304).

ESCO cast stainless steel products have an industrial grade finish. External surfaces may discolor in use due to exposure to steel and iron residue in processing. If cast stainless steel fittings are to be used in architectural or decorative applications, additional surface preparation is necessary to prevent discoloration.



### Closed Sockets

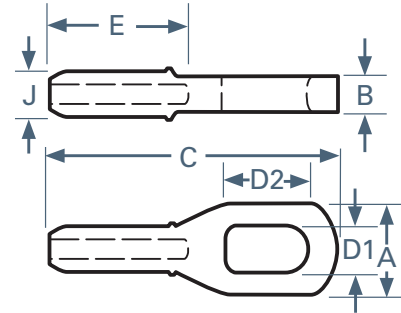
Part Number	Rope Size	Weight Each	A	B	Overall Length C	Pin Hole D	E*	F	Shank Diameter Before J	Shank Diameter After J	Die Description
5102784	5/16"	1	1-11/16"	11/16"	4-5/8"	7/8"	2	7/8"	7/8"	0.76	3/8" OC
5130291	3/8"	1	1-11/16"	11/16"	4-5/8"	7/8"	2	7/8"	7/8"	0.76	3/8" OC
5130293	7/16"	1.5	2"	13/16"	5-7/8"	1-1/16"	3	1-1/8"	1-1/8"	1.01	1/2" OC
5111839	1/2"	1.5	2"	13/16"	5-7/8"	1-1/16"	3	1-1/8"	1-1/8"	1.01	1/2" OC
5102808	9/16"	2.5	2-1/2"	1-1/8"	7-1/4"	1-1/4"	3-5/8"	1-3/8"	1-7/16"	1.27	5/8" OC
5102814	5/8"	2.5	2-1/2"	1-1/8"	7-1/4"	1-1/4"	3-5/8"	1-3/8"	1-7/16"	1.27	5/8" OC
5102820	3/4"	3	3"	1-5/16"	8-3/8"	1-7/16"	4-1/8"	1-5/8"	1-23/32"	1.53	3/4" OC
5102826	7/8"	6	3-1/2"	1-1/2"	10-1/8"	1-11/16"	5-1/2"	1-7/8"	1-23/32"	1.53	3/4" OC
5102832	1"	10	4"	1-3/4"	11-9/16"	2-1/16"	6-1/2"	2-3/16"	1-31/32"	1.76	7/8" OC
5112070	1-1/8"	16	4-1/2"	2"	14-3/4"	2-5/16"	9"	2-7/16"	2-1/4"	2.04	1" OC

\*E - Minimum rope insertion length.  
Swage in ESCO® Open Channel Dies.

**IMPORTANT:** ESCO cast stainless steel products are cast from a proprietary alloy— 40SS (equivalent to AISI 304).

ESCO cast stainless steel products have an industrial grade finish. External surfaces may discolor in use due to exposure to steel and iron residue in processing. If cast stainless steel fittings are to be used in architectural or decorative applications, additional surface preparation is necessary to prevent discoloration.





### Bail Sockets

Part Number	Rope Size	Weight Each	A	B	Overall Length C	Pin Hole D	E*	F	Shank Diameter Before J After J		Die Description
5111792	7/16"	1.8	2"	7/8"	7-3/8"	1-1/8"	2-3/8"	3-5/16"	1-1/8"	1.01	1/2" OC
5111790	1/2"	1.8	2"	15/16"	7-3/8"	1-1/8"	2-3/8"	3-5/16"	1-1/8"	1.01	1/2" OC

\*E - Minimum rope insertion length.  
Swage in ESCO® Open Channel Dies.

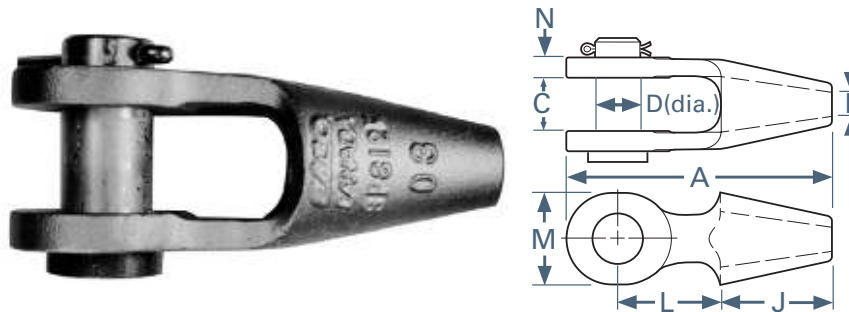
**IMPORTANT:** ESCO cast stainless steel products are cast from a proprietary alloy— 40SS (equivalent to AISI 304).

ESCO cast stainless steel products have an industrial grade finish. External surfaces may discolor in use due to exposure to steel and iron residue in processing. If cast stainless steel fittings are to be used in architectural or decorative applications, additional surface preparation is necessary to prevent discoloration.

## ESCO® open and closed galvanized spelter sockets

- ESCO Cast Spelter Sockets meet the requirements of ASTM A148 Gr 105/85.
- ESCO Spelter Socket Pins meet the requirements of ASTM A434 Grades BC/BD.
- ESCO Spelter Sockets shown are galvanized to ASTM A153 (painted or self colored available on request).
- ESCO Spelter Socket terminations have an ultimate load rating equal to the catalog strength of ASTM A 586-98 Class A manufactured strand and are recommended for use with 6x7, 6x19, 6x37, EIP, RRL, FC or IWRC, wire rope or strand.
- Open Sockets L-7000G to L-7005G and Closed Sockets L -7032G to L -7037G are supplied with grooves.
- Apply with Socket Metal or ESCO SOCKETFAST® Resin.
- ESCO offers a wide range of high strength structural sockets designed for specific rope and strand applications.
- Contact ESCO with your inquiry.

### Open galvanized spelter socket



**⚠ WARNING:** All spelter socket assemblies used as boom pendants must be proof loaded. Maximum proof load not to exceed 40% of rope or strand catalog break strength. ANSI B30.9-2.6.

### Closed galvanized spelter socket



**⚠ WARNING:** All spelter socket assemblies used as boom pendants must be proof loaded. Maximum proof load not to exceed 40% of rope or strand catalog break strength. ANSI B30.9-2.6.

### Galvanized Open Spelter Sockets

Item Number	Pattern Number	Rope Diameter in / mm	Strand Diameter in / mm	Weight lb / kg	Dimension A in / mm	Dimension C in / mm	Dimension D in / mm	Dimension F in / mm	Dimension J in / mm	Dimension L in / mm	Dimension M in / mm	Dimension N in / mm
4043941	L-7000G	0.56-0.63	0.50	4	6.75	1.25	1.19	0.69	3	2.56	2.25	0.56
		14-16	13	1.8	172	32	30	18	76	65	57	14
4043942	L-7001G	0.75	0.56-0.63	7	7.94	1.5	1.36	0.81	3.5	3	2.63	0.69
		17-19	14-16	3.2	202	38	35	21	89	76	967	18
4043943	L-7002G	0.88	0.69-0.75	10	9.25	1.75	1.63	1	4	3.5	3.25	0.81
		20-22	17-19	4.5	235	44	41	25	102	89	83	21
4043944	L-7003G	1	0.81-0.88	15	10.56	2	2	1.13	4.5	4	3.75	0.94
		23-26	20-22	6.8	268	51	51	29	114	102	95	24
4043945	L-7004G	1.13	0.94-1.00	23	11.88	2.25	2.25	1.25	5.06	4.5	4.13	1
		27-30	23-25	10.4	302	57	57	32	129	114	105	25
4043946	L-7005G	1.25-1.38	1.06-1.13	33	13.06	2.5	2.5	1.5	5.38	5	4.63	1.13
		31-36	26-29	15	332	64	64	38	137	127	118	29
4043947	L-7006G	1.5	1.19-1.25	43	15.13	3	2.75	1.63	6	6	5.38	1.19
		37-39	30-32	19.5	384	76	70	41	152	152	137	30
4043948	L-7007G	1.63	1.31-1.38	52	16.25	3	3	1.75	6.5	6.5	5.75	1.31
		40-42	33-35	23.6	413	76	76	44	165	165	146	33
4043949	L-7008G	1.75-1.88	1.44-1.63	83	18.38	3.5	3.5	2	7.5	7	6.5	1.63
		43-48	36-42	37.6	467	89	89	51	191	178	165	41
4043951	L-7009G	2.00-2.13	1.69-1.75	127	21.75	4	3.75	2.25	8.5	9	7.25	1.81
		49-54	43-45	57.6	552	102	95	57	216	229	184	46
4043952	L-7010G	–	1.81-1.88	130	21.75	4	4	2.25	8.5	9	7.25	1.81
			46-48	59	552	102	102	57	216	229	184	46
4043953	L-7011G	2.25-2.38	1.94-2.00	178	23.75	4.5	4.25	2.5	9	10	8	2.13
		55-60	49-51	80.7	603	114	108	64	229	254	203	54
4043955	L-7013G	2.50-2.63	2.19-2.25	236	26	5	4.75	2.88	9.75	11	8.5	2.38
		61-68	55-57	107	660	127	121	73	248	279	216	60
4043956	L-7014G	2.75-2.88	2.31-2.38	315	28.25	5.25	5	3.13	11.5	11.5	9	2.88
		69-75	58-61	143	718	133	127	80	292	292	229	73
4044236	L-7015G	3.00-3.13	2.44-2.56	424	29.75	5.75	5.25	3.38	12.5	11.5	9.5	3
		76-80	62-65	192	756	146	133	86	318	292	241	76
1086553	L-7016G	3.25	263-275	484	30.5	6	5.75	3.5	12.5	12	9.75	3
		81-83	66-70	220	775	152	146	89	318	305	248	76
1089510	L-7017G	3.38	2.88-3.00	558	31.75	6.25	6	3.63	12.5	12	12	3.13
		84-86	71-76	253	806	159	152	92	318	305	305	80
1089820	L-7018G	3.5	3.13-3.25	627	32.5	6.75	6.5	3.88	13.25	12.5	11.25	3.25
		87-89	77-83	284	826	171	165	99	337	318	286	83
1089838	L-7019G	3.63	3.38-3.50	734	34.75	7.25	6.75	4	14	13	11.75	3.38
		90-93	84-89	333	883	184	171	102	356	330	298	86
1089846	L-7020G	3.75-4.00	3.63-3.75	836	36.25	7.5	7	4.25	15	13.5	12.5	3.5
		95-102	92-95	379	921	191	178	108	381	343	318	89

Self colored available. Price on request. Use with SOCKETFAST® Resin or with socket metal.

### Galvanized Closed Spelter Sockets

Item Number	Pattern Number	Rope Diameter in / mm	Strand Diameter in / mm	Weight lb / kg	Dimension A in / mm	Dimension C in / mm	Dimension D in / mm	Dimension F in / mm	Dimension H in / mm	Dimension J in / mm	Dimension K in / mm	Dimension L in / mm
4124439	L-7032G	0.56-0.63	0.5	3	6.38	2.63	1.38	0.69	2.38	3	1	2.5
		14-16	13	1.4	162	67	35	18	60	76	25	64
4111726	L-7033G	0.75	0.56-0.63	5	7.63	3	1.63	0.81	2.75	3.5	1.25	3.06
		17-19	14-16	2.3	194	76	41	21	70	89	32	78
4060012	L-7034G	0.88	0.69-0.75	9	8.88	3.63	1.88	1	3.13	4	1.5	3.56
		20-22	17-19	4.1	226	92	48	25	80	102	38	90
4060013	L-7035G	1	0.81-0.88	12	10	4.13	2.25	1.13	3.75	4.5	1.75	4.06
		23-26	20-22	5.4	254	105	57	29	95	114	45	103
4058967	L-7036G	1.13	0.94-1.00	17	11.13	4.5	2.5	1.25	4.13	5	2	4.56
		27-30	23-25	7.7	283	114	64	32	105	127	51	116
1085018	L-7037G	1.25-1.38	1.06-1.13	22	12.31	5	2.75	1.5	4.75	5.5	2.19	4.94
		31-36	26-29	10	313	127	70	38	121	140	56	126
4048218	L-7038G	1.5	1.19-1.25	30	14	5.38	3.13	1.63	5.25	6	2.5	6
		37-39	30-32	13.6	356	137	80	41	133	152	64	152
1085034	L-7039G	1.63	1.31-1.38	35	15.13	5.75	3.25	1.81	5.5	6.5	2.75	6.5
		40-42	33-35	15.9	384	146	83	46	140	165	70	165
4051221	L-7040G	1.75-1.88	1.44-1.63	52	17.38	6.69	3.69	2.13	6.38	7.38	3	7.88
		43-48	36-42	23.6	442	170	94	54	162	187	76	200
1085051	L-7041G	2.00-2.13	1.69-1.75	86	19.75	7.63	3.81	2.25	7.38	8.5	3.25	8.81
		49-54	43-45	39	502	194	97	57	187	216	83	224
1085077	L-7043G	2.25-2.38	1.81-1.88	116	21.63	8.5	4.38	2.56	8.25	9	3.69	9.75
		55-60	46-48	52.6	549	216	111	65	210	229	94	248
1085093	L-7045G	2.50-2.63	1.94-2.13	170	24.75	9.75	5.5	2.63	9.25	10.5	4	10.69
		61-68	49-54	77.1	629	248	140	67	235	267	102	272
1085115	L-7047G	2.75-2.88	2.19-2.44	228	26.25	10.75	6.25	3.25	10	11.5	4.88	11
		69-75	55-62	104	667	273	159	82	254	292	124	279
1089692	L-7049G	3.00-3.13	2.50-2.63	297	28	11.75	6.75	3.63	10.75	12.5	5.25	11.38
		76-80	63-68	135	711	298	171	92	273	318	133	289
1089706	L-7050G	3.25-3.38	2.75-2.88	326	28.5	12.25	7.25	3.88	11.5	12.5	5.75	11.63
		81-86	69-75	148	724	311	184	98	292	318	146	295
1089714	L-7051G	3.50-3.63	3.00-3.13	410	30.75	13	7.75	4	12.5	13.5	6.25	12.63
		87-93	76-80	186	781	330	197	102	318	343	159	321
1089722	L-7052G	3.75-4.00	3.25-3.63	535	33.25	14.25	8.5	4.5	12.75	15	7	12.94
		94-102	81-93	243	845	362	216	114	324	381	178	329

Self colored available. Price on request. Use with SOCKETFAST® Resin or with socket metal.

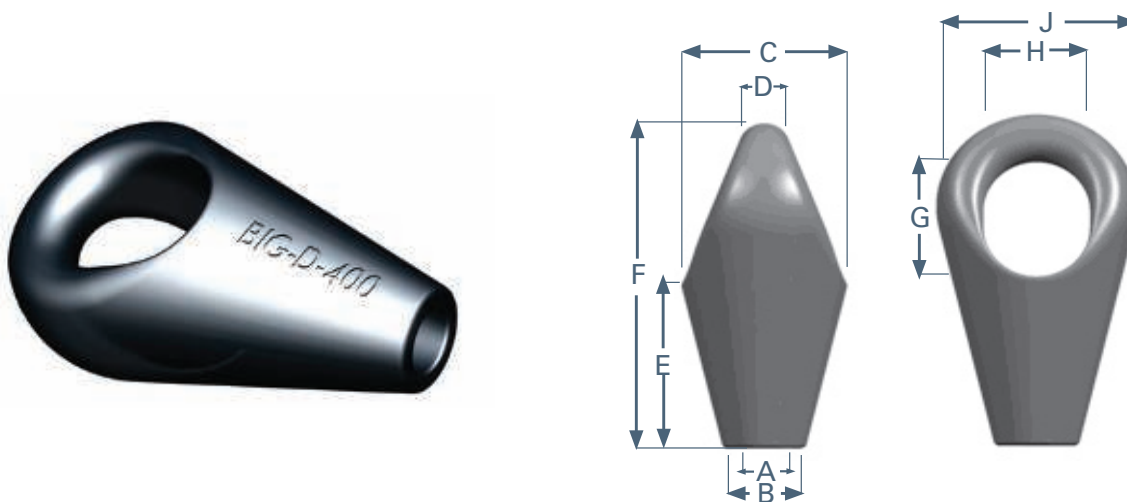
## Big-D™ anchor pendant sockets – painted

ESCO's complete line of BIG-D Anchor Pendant Sockets are designed and manufactured to withstand the toughest offshore applications – in anchor lines, mooring lines, chain chaser lines, pendant lines, and other tough rigging requirements.

All sockets are made from ESCO® AOD refined cast steel, with mechanical properties meeting or exceeding RQ4 requirements. All parts are available painted or galvanized.

BIG-D sockets are sized to fit standard chain connecting links and shackles. All sockets are 100% magnetic particle and ultrasonically inspected and individually serialized for quality verification.

Proofloading, and DnV or ABS certification available upon request.



### Anchor Pendant Sockets - Painted

Part Number	Description	Rope Size	Dimensions									Weight Each
			A	B	C	D	E	F	G	H	J	
5129987	BIG-D-100	2" - 2-1/8"	2-3/8"	3-3/4"	7-5/8"	2-5/16"	8-7/16"	15-3/4"	5-1/8"	4-11/16"	8-5/8"	75
5129988	BIG-D-200	2-1/4" - 2-3/8"	2-5/8"	4-3/16"	8-1/2"	2-5/8"	9-3/8"	17-5/8"	5-3/4"	5-1/4"	9-3/4"	105
5129989	BIG-D-300	2-1/2" - 2-5/8"	2-7/8"	4-5/8"	9-3/8"	2-7/8"	10-3/8"	19-1/2"	6-5/16"	5-7/8"	10-3/4"	142
5129990	BIG-D-400	2-3/4" - 2-7/8"	3-1/8"	5-1/8"	10-1/4"	3-3/16"	11-1/8"	21-3/4"	7-7/16"	7-1/2"	12"	181
5129991	BIG-D-500	3" - 3-1/8"	3-3/8"	5-1/2"	11-1/8"	3-7/16"	12"	23-5/8"	8-1/8"	8"	13-1/8"	234
5129947	BIG-D-600	3-1/4" - 3-5/8"	3-3/4"	6-1/8"	12-1/2"	3-3/4"	13-1/2"	26-1/2"	9"	7-3/4"	14-3/4"	338
5129992	BIG-D-700	3-3/4" - 4"	4-1/4"	7"	14-1/4"	4-3/8"	15-7/8"	29-5/8"	9-5/8"	8-7/8"	16-3/8"	502

Galvanized available. Price on request.



## Cast and machined ferrules and end fittings



### Cast Stainless Steel Screwy® Chocker Ferrules

Part Number	Rope Size	Size	Weight Each	Before Swage Length	Diameter	After Swage		Die Description	Box Qty.
						Length	Diameter		
5128336	1/2"	M 4 P	0.30	1-1/2"	1-3/16"	1-11/16"	1	Midget/FE Midget	50
5128321	9/16"	D9/16P	0.80	2"	1-9/16"	2-1/4"	1 4/9	ST Dwarf/FE Dwarf	50
5128320	5/8"	D 5 P	0.80	2"	1-9/16"	2-1/4"	1 4/9	ST Dwarf/FE Dwarf	50
5128318	5/8"	D B 5 P	0.9	1-3/4"	1-3/4"	2"	1 1/2	3/4" Open	50
5128312	5/8"	B 5 P	1.2	2-1/4"	1-3/4"	2-1/2"	1 3/5	ST Bantam/FE Bantam	50
5128314	3/4"	B 6 P	1.10	2-1/4"	1-3/4"	2-1/2"	1 3/5	ST Bantam/FE Bantam	50
5128330	3/4"	L 6 P	2.40	2-7/16"	2-1/4"	3"	2	1" Open/SE Light	25
5128332	7/8"	L 7 P	2.30	2-7/16"	2-1/4"	3"	2	1" Open/SE Light	10
5128335	1"	L 8 P	2.3	2-7/16"	2-1/4"	3"	2	1" Open/SE Light	10
5128323	7/8"	J 7 P	3	2-5/8"	2-1/2"	3"	2 1/4	1-1/8" Open/SE Junior	10
5128325	1"	J 8 P	2.80	2-5/8"	2-1/2"	3"	2 1/4	1-1/8" Open/SE Junior	10
5128327	1-1/8"	J 9 P	2.60	2-5/8"	2-1/2"	3"	2 1/4	1-1/8" Open/SE Junior	10

Swage in ESCO® Ferrule Dies.



### Cast Stainless Screwy Drumline™ Ferrules

Part Number	Rope Size	Size	Weight Each	Before Swage Length	Diameter	After Swage		Die Description	Box Qty.
						Length	Diameter		
5128313	3/4"	B 6DL	0.80	1-3/4"	1-3/4"	2"	1 1/2	3/4" OC	50
5128329	3/4"	L 6DL	2.00	2"	2-5/16"	2-1/4"	2	1" OC	25
5128331	7/8"	L 7DL	2	2"	2-5/16"	2-1/4"	2	1" OC	25
5128334	1"	L 8DL	2	2"	2-5/16"	2-1/4"	2	1" OC	25
5128324	1"	J 8DL	2.20	2-1/8"	2-9/16"	2-3/8"	2 1/4	1-1/8" OC	10
5128326	1-1/8"	J 9DL	2.20	2-1/8"	2-9/16"	2-3/8"	2 1/4	1-1/8" OC	10
5128322	1-1/4"	J 10DL	2.20	2-1/8"	2-9/16"	2-3/8"	2 1/4	1-1/8" OC	10

Swage in ESCO® Open Channel Dies.



AWRF Code F

### Machined Choker Ferrules

Part Number	Rope Size	Size	Weight Each	Before Swage Length	Diameter	After Swage		Die Description	Box Qty.
						Length	Diameter		
4006106	3/8"	MM 3 P	0.33	1-3/8"	1-1/4"	1-11/16"	1	ST Midget/FE Midget	100
4006107	7/16"	MM 7/16 P	0.33	1-3/8"	1-1/4"	1-11/16"	1	ST Midget/FE Midget	100
4006108	1/2"	MM 4 P	0.33	1-3/8"	1-1/4"	1-11/16"	1	ST Midget/FE Midget	100
4089829	9/16"	MM 9/16 P1	0.33	1-3/8"	1-1/4"	1-11/16"	1	ST Midget/FE Midget	100
4008150	5/8"	D5M	0.80	2"	1-9/16"	2-1/4"	1 4/9	ST Dwarf/FE Dwarf	50
4008152	3/4"	B6M	1.10	2-1/4"	1-3/4"	2-1/2"	1 3/5	ST Bantam/FE Bantam	50

Swage in ESCO® Ferrule Dies.

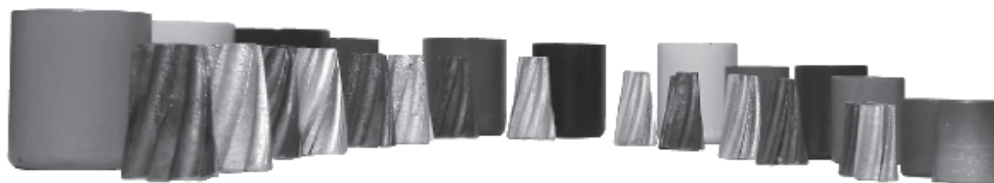


AWRF Code F

### Machined End Fittings

Part Number	Rope Size	Size	Weight Each	Before Swage Length	Diameter	After Swage		Die Description	Box Qty.
						Length	Diameter		
4134053	3/16"	3/16" DE	0.12	5/8"	5/8"	13/16"	1/2	1/4" OC	50
4005964	1/4"	1/4" DE	0.17	7/8"	5/8"	1-1/8"	1/2	1/4" OC	50
4005965	5/16"	5/16" DE	0.2	1"	7/8"	1-1/4"	3/4	3/8" OC	50
4005957	3/8"	3/8" DE	0.25	1-1/4"	7/8"	1-9/16"	3/4	3/8" OC	50
4005960	7/16"	7/16" DES	0.25	1-1/2"	1"	1-3/4"	8/9	7/16" OC	25
4005958	7/16"	7/16" DE	0.33	1-1/2"	1-1/8"	1-3/4"	1	1/2" OC	25
4134054	1/2"	1/2" DE	0.33	1-5/8"	1-1/8"	1-7/8"	1	1/2" OC	25
4017636	1/2"	1/2" TW	0.4	1-11/32"	1-5/16"	1-1/2"	1 1/7	9/16" OC	25
4017637	9/16"	9/16" TW	0.4	1-11/32"	1-5/16"	1-1/2"	1 1/7	9/16" OC	25

Swage in ESCO® Open Channel Dies.



## Wedge-Type Ferrules

Rope Size	Part Number	Ferrule Size	Color	Outside Diameter	Length	Weight	Wedge Size
3/8", 7/16"	4017601	M3 Midget	Silver	1-1/8"	1-3/8"	0.25	#4
1/2", 9/16"	4017602	M4 Midget	Lt . Blue			0.25	#4
9/16", 5/8"	4017603	D5 Dwarf	Pink	1-1/2"	1-3/4"	0.5	#5
9/16", 5/8"	4017604	B5 Bantam	Maroon	1-5/8"	2"	0.75	#5
3/4"	4017605	B6 Bantam	Grey			0.75	#6
3/4"	4005822	L6 Light	White	2-1/8"	2-5/8"	1.75	#6
7/8"	4005820	L7 Light	Black			1.75	#7
1"	4017616	L8 Light	Green			2.75	#8
7/8"	4017606	J7 Junior	Red	2-1/2"	2-3/4"	1.5	#7
1"	4017607	J8 Junior	Navy			2	#8
1-1/8"	4017608	J9 Junior	Yellow			2	#9
1-1/4"	4017609	J10 Junior	Orange			2.22	#10

**IMPORTANT:** Wedge Ferrules may be used with SOCKETFAST® Resin.

## Six Strand Wedges

Wedge Size	Weight	Material	Part Number
#4	0.1	Bronze	4076278
#4	0.1	Aluminum	4163075
#5	0.15	Bronze	4162746
#5	0.15	Aluminum	4006838
#6	0.2	Bronze	4162747
#6	0.2	Aluminum	4005821
#7	0.2	Bronze	4162748
#7	0.2	Aluminum	4005819
#8	0.3	Bronze	4076282
#8	0.3	Aluminum	4156813
#9	0.6	Bronze	4060008
#9	0.6	Aluminum	4173099
#10	0.7	Bronze	4060009
#10	0.7	Aluminum	4173100

## Seven Strand Wedges

Wedge Size	Weight	Material	Part Number
#5	0.15	Bronze	4176375
#5	0.15	Aluminum	4176368
#6	0.2	Bronze	4176376
#6	0.2	Aluminum	4176370
#7	0.2	Bronze	4176377
#7	0.2	Aluminum	4176371
#8	0.3	Bronze	4176378
#8	0.3	Aluminum	4176372
#9	0.6	Bronze	4176379
#9	0.6	Aluminum	4176373
#10	0.7	Bronze	4176381
#10	0.7	Aluminum	4176374

**IMPORTANT:** Ferrules and wedges sold separately.

**IMPORTANT:** Ferrules and wedges sold separately.

**⚠ WARNING:** All ESCO® wedge-type ferrules with six strand wedges are designed for use with 6 x 19 class or 6 x 37 class; or with seven strand wedges are designed for use with 7 x 19 or 7 x 37 class, right regular lay, EIP, IWRC wire rope, manufactured to US specifications.

**⚠ WARNING:** Do not use ferrules for suspending loads. Ferrules are not intended for use in applications where loads are fully suspended overhead except in some log harvesting systems where adequate precautions are taken. Other fittings, such as sleeves and sockets, should be used for overhead work.



### Zinc Pour Ferrules

Part Number	Rope Size	Item	Weight Each	Ferrule Length	Outside Diameter	Hook Size
4152315	5/8"	D-5	0.40	1-3/4"	1-1/2"	Dwarf
4183015	3/8", 1/2"	B-4	0.50	2"	1-5/8"	Bantam
4183016	5/8"	B-5	0.5	2"	1-5/8"	Bantam
4183017	3/4"	B-6	0.5	2"	1-5/8"	Bantam
4152316	3/4"	L-6	1.10	2-5/8"	2-1/8"	Light
4183018	7/8"	L-7	1.10	2-5/8"	2-1/8"	Light
4183019	1"	L-8	1.10	2-5/8"	2-1/8"	Light
4152317	7/8"	J-7	1.8	2-3/4"	2-3/8"	Junior
4183020	1"	J-8	1.8	2-3/4"	2-3/8"	Junior
4183021	1-1/8"	J-9	1.80	2-3/4"	2-3/8"	Junior
4152318	1-1/4"	J-10	1.80	2-3/4"	2-3/8"	Junior
4152319	1", 1-1/8"	S-9	2	3-3/16"	2-13/16"	Standard
4152320	1-1/4"	S-10	2	3-3/16"	2-13/16"	Standard
4152321	1-3/8"	S-11	2.00	3-3/16"	2-13/16"	Standard
4152322	1-1/2"	S-12	2.00	3-3/16"	2-13/16"	Standard

**⚠ WARNING: DO NOT USE WITH RESIN.** Use only with socket metal.

## ESCO® logging and forestry hardware for chokers and winchline

### Winchline

### Choker Options

### Sliding Hook Options

Rope Size	Ferrule (Wedge)	Linender™ Hook	Rope Size	Ferrule (Wedge)	Bardon® Choker Hook	Ring-type Holdrite® Light Weight	Heavy-Duty	Sleeve-type Holdrite®
9/16"	B5 (No. 5)	Bantam/Midget	3/8" or 7/16"	M3 (No.3)	Midget or Micro-Midget	Lt. Wt. Midget	--	1/2" Midget
--	--	--	1/2"	M4 (No.4)	Midget or Micro-Midget	Lt. Wt. Midget	Midget	1/2" and 9/16" Midget
5/8"	B5 (No. 5)	Bantam/Midget	9/16"	M4 (No.4)	Midget or Micro-Midget	Lt. Wt. Midget	Midget	9/16" Midget
3/4"	B6 (No. 6)	Bantam/Midget	9/16"	M4 (No.4)	Midget or Micro-Midget	Not recommended	Midget	9/16" Midget
7/8"	L7 (No. 7)	Light Bantam	5/8"	B5 (No.5)	Bantam or Lt. Wt. Bantam	Not recommended	Dwarf	Dwarf
--	--	--	3/4"	B6 (No. 6)	Bantam or Lt. Wt. Bantam	Not recommended	Bantam	Dwarf

Note: ST Holdrite Hooks can be replaced with appropriate size Linender Hooks



AWRF Code LH

### Bardon® Choker Hooks

Part Number	Hook (Ferrule) Size	Weight Each	Designed for the following size Choker Ropes	May also be used with these sizes	Box Qty.
5108904	Micro-Midget*	0.75	1/2"	3/8", 7/16", 9/16"	25
5108661	Midget	1.5	1/2"	3/8", 7/16", 9/16"	25
5108679	Dwarf	3.25	5/8"	1/2", 9/16"	10
1015885	Bantam	4	3/4"	5/8", 1/2"	--
1016016	Light	9.8	7/8"	3/4", 1"	--

\*Uses Midget ferrules



## ESCO® logging and forestry hardware



### Ring-Type Holdrite® Hooks

Part Number	Size	Weight Each	Winchline Opening	Recommended Winchline Size	Box Qty.
1012606	Lt Wt Midget	1.75	Approx. 2" Dia.	1/2", 9/16"	15
1012665	Midget	3			10



### Sleeve-Type Holdrite Hooks

Part Number	Size	Weight Each	Recommended Choker Size	Recommended Winchline Size	Box Qty.
1012703	9/16" Midget	2.25	1/2", 9/16"	9/16", 5/8", 3/4"	15



### Twitch Hook

Part Number	Hook (Ferrule) Size	Weight Each	Winchline Opening	Recommended Choker Size	Box Qty.
5128059	Midget Twitch Hook	3	Approx. 2"	1/2", 9/16"	15

### ESCO Import Logging Hooks Made in China to ESCO Specifications

Part Number	Hook (Ferrule) Size	Weight Each
5114062	Micro midget	0.85
5114938	Midget	1.5
5126113	Dwarf	3.25
5114937	Midget Ring-Type Holdrite	2.25
5126114	Midget Sleeve-Type Holdrite	2.25
5126115	Twitch Hook	2.3

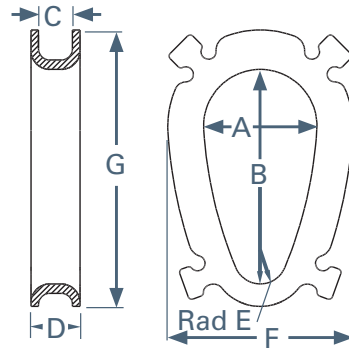


### Hazel Hoe

Item	Weight Each	Standard Package	Part Number
Hazel Hoe	3	--	5103258

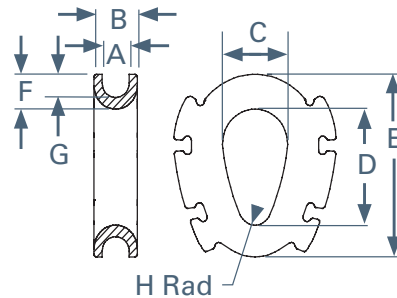


## Industrial rigging hardware



### Slip Through Thimbles

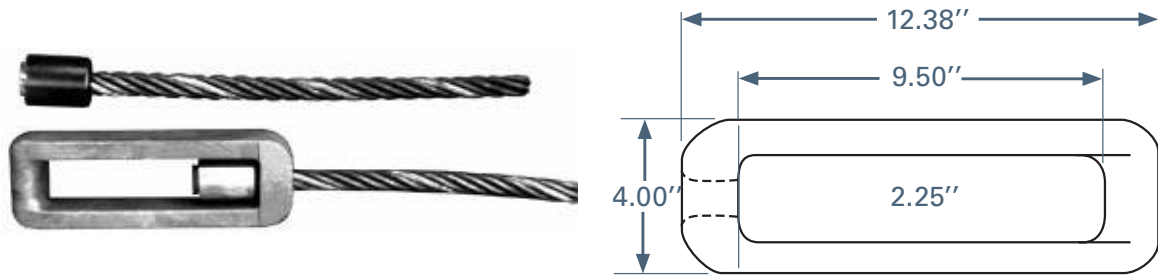
ESCO Part No	Description	Sling Size		Dimensions							Weight Each
		Single	8 pts.	A	B	C	D	E	F	G	
5125593	ST2	3/8	3/32 - 1/8	2-1/8"	4-1/8"	7/16"	13/16"	9/16"	3-1/4"	5-1/4"	1
5125594	ST3	9/16	0.1875	2-3/8"	4-3/8"	5/8"	1"	5/8"	3-7/8"	5-15/16"	1.3
5125595	ST4	3/4	0.25	3-3/8"	6-5/8"	13/16"	1-7/16"	5/8"	5-3/8"	8-1/4"	3.8
5125596	ST5	1	0.3125	3-3/4"	7-1/8"	1-1/8"	1-5/8"	7/8"	6-1/8"	9-3/16"	5
5125597	ST6	1-1/4	0.375	4-3/8"	8-3/8"	1-3/8"	1-7/8"	1"	7-1/8"	11"	7.8
5125598	ST7	1-1/2	7/16 - 1/2	5"	9-1/2"	1-5/8"	2-1/8"	1-1/4"	7-3/4"	12-1/4"	7.8



### Casing / Choker Thimbles

ESCO Part No	Description	Sling Size		Dimensions								Weight Each
		6 pts.	8 pts.	A	B	C	D	E	F	G	H	
5125647	NO.2	1/8	1/8	1/2"	7/8"	1-1/4"	2-1/8"	3-3/16"	5/8"	3/8"	5/16"	0.7
5125648	NO.3	1/4	3/16	5/8"	1"	1-1/2"	2-1/2"	3-15/16"	3/4"	1/2"	3/8"	1.1
5125649	NO.4	5/16	1/4	13/16"	1-3/16"	1-3/4"	2-7/8"	4-7/16"	15/16"	11/16"	7/16"	1.96
5125650	NO.5	3/8	5/16	15/16"	1-7/16"	2"	3-1/4"	4-15/16"	1-1/16"	13/16"	1/2"	2.77
5125651	NO.6	7/16	3/8	1-1/8"	1-11/16"	2-1/4"	3-5/8"	5-13/16"	1-5/16"	15/16"	9/16"	3.8
5125652	NO.7	1/2	7/16	1-3/8"	1-15/16"	2-3/4"	4-1/16"	6-7/16"	1-7/16"	1-1/16"	11/16"	5.25

**IMPORTANT:** ESCO casing and choker thimbles can be proof tested to 2 times WLL with no deformation.



### Roll-off Hook

Part Number	Item	Unit Weight	Rope Size	Exterior Length	Exterior Width	Thickness	Interior Length	Interior Width
5121573	Roll-off Hook	13.25	7/8"	12-3/8"	4"	2-1/4"	9-1/2"	2-1/4"

**NOTE:** Use only one of the following ferrules: L7P Cast Stainless Steel Screwy® Choker Ferrule; 5128332  
L7 Wedge-type Ferrule; 4005820

## Socketing media

ESCO® SOCKETFAST® resin is a convenient two-part liquid system. Installations can be done in a variety of locations; at the shop, on a ship deck, or on the job site. Uniform blending of the two-part liquid system ensures a homogenous mixture and allows horizontal pouring if necessary.

- ESCO SOCKETFAST Resin has a 1-year life from date of manufacture (each container is dated) The resin should be stored at temperatures less than 29°C/85°F.
- ESCO SOCKETFAST Resin may be used with Wedge Ferrules (without wedges)
- Recommend using SOCKETFAST Resin in Sockets without grooves or with grooves filled prior to SOCKETFAST Resin application
- **ESCO SOCKETFAST Resin must not be used with zinc ferrules – USE SOCKET METAL ONLY**
- See application instructions (P3001RIG) for proper procedures

### SOCKETFAST Resin Provides

- Suitable for on-site wire rope assembly
- Easy to use with a quick cure time
- 100% of the rated wire rope strength
- Available in 3 convenient sizes

### ESCO SOCKETFAST Resin

Part Number	Type	Case Wt.	Standard Case
4241297	500 Gram Kit	22.2	16-cans
4055377	1,000 Gram Kit	33.5	11-cans
4055378	4,000 Gram Kit	41	4-cans

*SOCKETFAST resin sold in case lots only.*



500 Grams (17.5 cu.in. / 287 cc)  
16 per Case



1000 Grams (35.1 cu.in. / 575 cc)  
11 per Case



4000 Grams (140.3 cu.in. / 2,299 cc)  
4 per Case



## ESCO® SOCKETFAST® Resin Volumes

### SOCKETFAST Resin Kits

Three sizes of pre-measured kits are available for convenience and to minimize waste. The charts below provide volume information to assist in ordering the right amount of SOCKETFAST resin.

Volume of SOCKETFAST Resin required for  
ESCO spelter sockets

Rope or Strand Size	Rope Fitting Volume		
	in. <sup>3</sup>	grams	cc
1/4"	0.5	15	9
5/16"	1.1	30	17
3/8"	1.1	30	17
7/16"	2.1	60	35
1/2"	2.1	60	35
9/16"	3.2	90	52
5/8"	3.2	90	52
3/4"	5.3	150	86
7/8"	7.5	215	125
1"	9.7	275	160
1-1/8"	13	365	210
1-1/4"	21.5	610	350
1-3/8"	21.5	610	350
1-1/2"	26	735	420
1-5/8"	30	860	495
1-3/4"	43	1220	700
1-7/8"	43	1220	700
2"	78	2200	1265
2-1/8"	78	2200	1265
2-1/4"	86	2450	1410
2-3/8"	86	2450	1410
2-1/2"	112	3180	1830
2-5/8"	112	3180	1830
2-3/4"	137	3910	2250
3"	193	5500	3160
3-1/4"	232	6600	3795
3-1/2"	300	8560	4920
3-3/4"	365	10,400	5980
4"	472	13,450	7730

Volume of SOCKETFAST Resin required for  
elevator shackles

Rope or Strand Size	Elevator Shackle Volume		
	in. <sup>3</sup>	grams	cc
3/8"	1.1	32	19
1/2"	2.1	60	35
9/16"	2.1	60	35
5/8"	3.5	100	58
11/16"	4.6	130	75
3/4"	5.1	145	84



## Swaging dies

Tapering dies



Open channel dies



Ferrule dies



Forged socket dies



### 2 x 3-1/2" Mark 75 and Mark 87 Swagers

Swage Die Part No.	ESCO Stainless Steel Sleeves				2-piece Duplex	Single	Carbon Steel Single Sleeves	Cast SS SKTS Open/ Closed./ Bail	Ferrules	Forged Swage Sockets
	Swage Die Description	Maximum Die Diameter	Weight Each	1-piece Duplex						
Open Channel Dies										
4016518	1/8" Combination*	0.25"	13	1/8"	—	—	—	—	—	—
	1/2" Combination	1.00"	--	1/2" & 7/16"	1/2"	1/2" & 7/16"	—	1/2" & 7/16"	7/16" & 1/2"	—
4186796	3/16" Combination	0.38"	13	3/16"	—	—	—	—	—	—
	5/16" Combination	0.63"	--	—	—	—	—	—	—	—
4016519	3/16" Combination	0.38"	13	3/16"	—	—	—	—	—	—
	7/16" Combination	0.88"	—	—	—	—	—	—	7/16"SPL	—
4016520	1/4" Combination	0.52"	13	1/4"	—	—	—	—	1/4" & 3/16"	—
	3/8" Combination	1.75"	--	3/8" & 5/16"	—	3/8" & 5/16"	—	3/8" & 5/16"	3/8" & 5/16"	—
4016521	5/16" Single Channel	0.63"	13	—	—	—	—	—	—	—
4097396	9/16" Single Channel	1.13"	12	—	—	—	—	—	1/2"TW-9/16"TW	—
4016522	5/8" Single Channel	1.27"	14	5/8" & 9/16"	5/8" & 9/16"	5/8"	—	5/8" & 9/16"	—	—
4016523	3/4" Single Channel	1.52"	14	—	3/4"	—	—	—	DB4P	—
4091003	7/8" Single Channel	1.75"	14	—	—	—	—	—	—	—
Taper Dies for Carbon Steel Sleeves										
4089196	1/4" Dual Channel	0.56"	12	—	—	—	1/4"	—	—	—
4079211	3/8" Dual Channel	0.76"	14	—	—	—	3/8" & 5/16"	—	—	—
4016223	1/4" Combination*	0.56"	13	—	—	—	1/4"	—	—	—
	3/8" Combination	0.76"	14	—	—	—	3/8" & 5/16"	—	—	—
4016224	1/2" Single Channel	1.01"	13	—	—	—	1/2" & 7/16"	—	—	—
4016225	5/8" Single Channel	1.23"	14	—	—	—	5/8" & 9/16"	—	—	—
4016226	3/4" Single Channel	1.45"	16	—	—	—	3/4"	—	—	—
Ferrule Dies										
4016782	Midget Front Entry	1.07"	13	—	—	—	—	—	M4P, MM3P -	—
	—	—	—	--	--	--	--	--	MM9/16"	--
4069623	Midget Side Entry	1.07"	13	—	—	—	—	—	M4P, MM3P -	—
	—	—	—	—	—	—	—	—	MM9/16"	—
Forged Socket Dies										
4005874	1/4" Combination	0.44"	15	—	—	—	—	—	—	1/4"
	3/8" Combination	0.69"	15	—	—	—	—	—	—	3/8"
4005876	1/2" Single Channel	0.88"	17	—	—	—	—	—	—	1/2"
4005877	5/8" Single Channel	1.13"	22	—	—	—	—	—	—	5/8"

\*Combination dies have multiple channels in one die block.  
All maximum die diameters are for reference only.

**IMPORTANT:** If you are swaging non-ESCO fittings be sure to contact the fitting manufacturer to determine proper diameter and swaging techniques.

## 2-1/2" x 5" for Mark 100 and 150 Swagers

Swage Die Part No.	Swage Die Description	Maximum Die Diameter	Weight Each	SS 1-pc Duplex	SS 2-pc Duplex	SS Single	CS Single Sleeves	Cast SS SKTS Open/ Closed./ Bail	Ferrules	Forged Swage Sockets
<b>Open Channel Dies for Stainless Steel Products</b>										
4003337	1/8" Combination	0.25"	27	1/8"	—	—	—	—	—	—
—	3/16" Combination	0.38"	—	3/16"	—	—	—	—	—	—
4003338	1/4" Combination	0.52"	27	1/4"	—	—	—	—	—	—
—	3/8" Combination	0.75"	—	5/16" - 3/8"	—	—	—	—	—	—
4003339	7/16" Optional Combination	0.88"	26	—	—	—	—	—	7/16"	—
—	5/16" Optional Combination	0.63"	—	—	—	—	—	—	—	—
4003340	1/2" Single Channel	1.01"	28	7/16" - 1/2"	—	7/16" - 1/2"	—	7/16" - 1/2"	7/16" - 1/2"	—
4003341	9/16" Optional Single Channel	1.13"	26	—	—	—	—	—	TH4, TH 7/16"	—
4003342	5/8" Single Channel	1.27"	28	9/16" - 5/8"	5/8"	5/8"	—	3/8" & 5/16"	1/2"TW - 9/16"TW	—
4003343	3/4" Single Channel	1.52"	29	3/4"	3/4"	3/4"	—	3/4" - 7/8"	DB 5P, B6 D/L	—
4003344	7/8" Single Channel	1.75"	30	7/8"	7/8"	7/8"	—	1"	—	—
4003345	1" Single Channel	2.03"	32	1"	1"	1"	1"-1st Stg.*	1-1/8"	Light Ferrules	—
4003346	1-1/8" Single Channel	2.25"	37	—	1-1/8"	1-1/8" - 1-1/4"	1-1/8"-1st Stg.*	—	Junior Ferrules	—
4003347	1-1/4" Single Channel	2.50"	36	—	1-1/4" & 1-3/8"	1-3/8"	1-1/4"-1st Stg.*	—	—	—
4003348	1-1/2" Single Channel	2.69"	39	—	1-1/2"	1-1/2"	1-3/8"-1st Stg.*	—	—	—
4006473	1-1/2" Special 1st Stage	3.01"	37	—	—	—	1-1/2"-1st Stg.*	—	—	—
<b>Taper Dies for Carbon Steel Flemish Eye Applications</b>										
4089194	1/4" Combination	0.56"	27	—	—	—	1/4"	—	—	—
4089195	3/8" Combination	0.76"	27	—	—	—	3/8" & 5/16"	—	—	—
4003349	1/4" Combination	0.56"	—	—	—	—	1/4"	—	—	—
—	3/8" Combination	0.76"	28	—	—	—	3/8"	—	—	—
4003350	1/2" Single Channel	1.01"	27	—	—	—	1/2" & 7/16"	—	—	—
4003351	5/8" Single Channel	1.23"	26	—	—	—	5/8" & 9/16"	—	—	—
4003352	3/4" Single Channel	1.45"	29	—	—	—	3/4"	—	—	—
4003353	7/8" Single Channel	1.70"	34	—	—	—	7/8"	—	—	—
4003354	1"-2nd Stage Taper	1.89"	38	—	—	—	1"-2nd Stg.*	—	—	—
4003355	1-1/8"-2nd Stage Taper	2.09"	42	—	—	—	1-1/8"-2nd Stg.*	—	—	—
4003356	1-1/4"-2nd Stage Taper	2.29"	42	—	—	—	1-1/4"-2nd Stg.*	—	—	—
4003357	1-3/8"-2nd Stage Taper	2.51"	43	—	—	—	1-3/8"-2nd Stg.*	—	—	—
4003358	1-1/2"-2nd Stage Taper	2.67"	44	—	—	—	1-1/2"-2nd Stg.*	—	—	—
<b>Forged Socket Dies</b>										
4005864	1/4" Combination	0.44"	27	—	—	—	—	—	—	1/4"
—	3/8" Combination	0.69"	—	—	—	—	—	—	—	5/16", 3/8"
4005865	1/2" Single Channel	0.88"	30	—	—	—	—	—	—	7/16", 1/2"
4005866	5/8" Single Channel	1.13"	36	—	—	—	—	—	—	9/16", 5/8"
4005867	3/4" Single Channel	1.38"	42	—	—	—	—	—	—	3/4"
4005868	7/8" Single Channel	1.51"	44	—	—	—	—	—	—	7/8"
4005869	1" Single Channel	1.76"	43	—	—	—	—	—	—	1"
4005870	1-1/8" Single Channel	2.01"	43	—	—	—	—	—	—	1-1/8"
4003582	1-1/4" Single Channel	2.26"	34	—	—	—	—	—	—	1-1/4"
<b>Ferrule Dies</b>										
4016528	Midget Front Entry	1.07"	27	—	—	—	—	—	M4P, MM3P- MM9/16"P	—
4016530	Dwarf Front Entry	1.45"	26	—	—	—	—	—	D9/16"P, D5P	—
4016532	Bantam Front Entry	1.60"	26	—	—	—	—	—	B5P, B6P	—
4069624	Midget Thru Channel	1.07"	27	—	—	—	—	—	M4P, MM3P- MM9/16"P	—
4069625	Drawf Thru Channel	1.45"	35	—	—	—	—	—	D9/16"P, D5P	—
4069626	Bantam Thru Channel	1.60"	34	—	—	—	—	—	B5P, B6P	—
4069627	Light Side Entry Pocket Die	2.03"	32	—	—	—	—	—	L6, L7, L8	—
4069628	Junior Side Entry Pocket Die	2.26"	30	—	—	—	—	—	J7, J8, J9	—

2nd stage tapering dies should be used in conjunction with 1st stage open channel dies.

All maximum die diameters are for reference only.

**IMPORTANT:** If you are swaging non-ESCO fittings be sure to contact the fitting manufacturer to determine proper diameter and swaging techniques.

#### 4" x 7" Dies for ESCO Mark 200 and 250 Swagers

Swage Die Part No.	Swage Die Description	Maximum Die Diameter	Weight Each	SS 2-pc Duplex	SS Single	CS Single Sleeves	Forged Swage Sockets
<b>Open Channel Dies for SS and CS Sleeves</b>							
4048572	1-3/4" Single Channel	3.07"	134	1-3/4"	1-3/4"	—	—
4048598	2" Single Channel	3.51"	128	2"	2"	1-3/4"-1st Stg.* 2"-2nd Stg	—
4048599	2-1/4" Single Channel	4.01"	120	2-1/4"	2-1/4"	2"-1st Stg.*	—
4048600	2-1/2" Single Channel	4.39"	113	2-1/2"	—	—	—
<b>Taper Dies for CS Sleeves</b>							
4048598	1 3/4" 1st Stage	3.51"	128	2"	2"	1-3/4"-1st Stg.* 2"-2nd Stg	—
4070864	1-3/4"-2nd Stage	3.07"	136	—	—	1-3/4"-2nd Stg	—
4048599	2" - 1st Stage	4.01"	120	2-1/4"	2-1/4"	2"-1st Stg.*	—
4048598	2" 2nd Stage	3.51"	128	2"	2"	1-3/4"-1st Stg.* 2"-2nd Stg	—
4070866	2-1/2"-1st stage	4.83"	126	—	—	2-1/2"-1st Stg.*	—
4070865	2-1/2"-2nd stage	4.45"	134	—	—	2-1/2"-2nd Stg.*	—
<b>Forged Socket Dies</b>							
4003254	1-1/4"	2.26"	134	—	—	—	1-1/4"
4003255	1-3/8"	2.51"	126	—	—	—	1-3/8"
4003256	1-1/2"	2.76"	137	—	—	—	1-1/2"
4003257	1-3/4"	3.01"	154	—	—	—	1-3/4"
4003258	2"	3.51"	151	—	—	—	2"
4008539	Die Adapter for 2-1/2" Dies	—	70	—	—	—	—

2nd stage tapering dies should be used in conjunction with 1st stage open channel dies.

All maximum die diameters are for reference only.

**IMPORTANT:** If you are swaging non-ESCO fittings be sure to contact the fitting manufacturer to determine proper diameter and swaging techniques.

## Die wear gauges



### Open Channel Die Gauges

ESCO Die		ESCO Die Wear Gauges		Weight Each	Gauge Kit No.
Description		"GO" Diameter	"NO-GO" Diameter		
1/8"	OPEN	0.24"	0.25"	0.1	-
3/16"	OPEN	0.37"	0.38"	0.1	-
1/4"	OPEN	0.52"	0.52"	0.2	-
5/16"	OPEN	0.62"	0.63"	0.2	-
3/8"	OPEN	0.75"	0.75"	0.3	-
7/16"	OPEN	0.87"	0.88"	0.3	-
1/2"	OPEN	1.00"	1.00"	0.4	-
9/16"	OPEN	1.12"	1.13"	0.4	-
5/8"	OPEN	1.26"	1.27"	0.8	-
3/4"	OPEN	1.52"	1.52"	1.1	-
7/8"	OPEN	1.75"	1.75"	1.1	-
1"	OPEN	2.02"	2.03"	1.3	-
1-1/8"	OPEN	2.25"	2.25"	1.6	-
1-1/4"	OPEN	2.49"	2.50"	1.8	-
1-1/2"	OPEN	2.68"	2.69"	2	-
Set-15 Gauges and Case				12	4002557

**NOTE:** Contact your distributor for calibration.

### Open Channel and Staging Die Gauges

ESCO Die		ESCO Die Wear Gauges		Weight Each	Gauge Kit No.
Description		"GO" Diameter	"NO-GO" Diameter		
1-3/4"	OPEN	--	3.07"	3.8	4002536
1-3/4"	TAPER				
1-3/4"	STAGING				
2"	OPEN	--	3.51"	5.0	4002537
2"	STAGING				
2-1/4"	OPEN	--	4.01"	6.7	4002538
2-1/2"	OPEN	--	4.39"	8.1	4002539
2-1/2"	STAGING	--	4.45"	8.3	4002540
Handle: Must be ordered with each gauge above				2	4002574

**NOTE:** Only "NO-GO" gauges are used on larger dies.  
Continued on the next page.

**IMPORTANT:** Using die gauges is the only reliable way to measure the necessary close tolerances.  
Please refer to Swage Die Wear Gauges Instruction Manual (P3000RIG)

### Tapering Die Gauges

ESCO Die		ESCO Die Wear Gauges		Weight Each	Gauge Kit No.
Description		"GO" Diameter	"NO-GO" Diameter		
1/4"	TAPER	0.54"	0.56"	0.2	-
3/8"	TAPER	0.74"	0.76"	0.2	-
1/2"	TAPER	0.99"	1.01"	0.4	-
5/8"	TAPER	1.21"	1.23"	0.5	-
3/4"	TAPER	1.43"	1.43"	0.8	-
7/8"	TAPER	1.68"	1.70"	1.1	-
1"	TAPER	1.87"	1.89"	1.4	-
1-1/8"	TAPER	2.07"	2.09"	2.2	-
1-1/4"	TAPER	2.28"	2.29"	2.7	-
1-3/8"	TAPER	2.49"	2.51"	3.2	-
1-1/2"	TAPER	2.65"	2.67"	3.7	-
Set-11 Gauges and Case				18	4002535

### Ferrule Die Gauges

ESCO Die		ESCO Die Wear Gauges		Weight Each	Gauge Kit No.
Description		"GO" Diameter	"NO-GO" Diameter		
MIDGET	-	1.06"	1.07"	1.1	-
DWARF	-	1.44"	1.45"	1.5	-
BANTAM	-	1.59"	1.60"	1.6	-
Set (Midget, Dwarf, Bantam) and Case				5	4002523
LIGHT	-	2.02"	2.03"	1.9	4003488
JUNIOR	-	2.25"	2.26"	2	4003489

**NOTE:** Light and Junior Die Gauges are sold individually.

### Forged Socket Die Gauges

ESCO Die		ESCO Die Wear Gauges		Weight Each	Gauge Kit No.
Description		"GO" Dia.	"NO-GO" Dia.		
1/4"	FRG. SKT.	0.43"	0.44"	0.2	-
3/8"	FRG. SKT.	0.68"	0.69"	0.2	-
1/2"	FRG. SKT.	0.87"	0.88"	0.4	-
5/8"	FRG. SKT.	1.12"	1.13"	0.5	-
3/4"	FRG. SKT.	1.37"	1.38"	0.8	-
7/8"	FRG. SKT.	1.50"	1.51"	1.1	-
1"	FRG. SKT.	1.75"	1.76"	1.4	-
1-1/8"	FRG. SKT.	1.99"	2.01"	2.2	-
1-1/4"	FRG. SKT.	2.24"	2.26"	2.7	-
1-3/8"	FRG. SKT.	2.49"	2.51"	3.2	-
1-1/2"	FRG. SKT.	2.74"	2.76"	3.5	-
1-3/4"	FRG. SKT.	2.99"	3.01"	4.0	-
2"	FRG. SKT.	3.49"	3.51"	4.5	-
Set-13 Gauges and Case					4051382

# ESCO® swagers

## Mark 87 Swager



Electrically operated foot controls provide precise control. Controls can be positioned for maximum operator comfort.



Sight glass indicates the hydraulic oil level and temperature.



To simplify maintenance, the power unit features a filter gauge to indicate when the filter should be changed.

### Specifications:

#### Mark 87 Swager (Part No. 4090087)

Weight	2100 lb / 953 kg
Swager height	51" / 1295mm
Swager width	27" / 686mm
Swager length	45.5" / 1130mm
Die work height from floor	33.5" / 851mm
Cylinder diameter	5.5" / 140mm
Recommended floor area (Swager and Power Unit)	5' x 9' / 1.5m x 2.75m

#### Hydraulic Power Unit

Weight (dry)	470 lb / 213 kg
Power unit length	36" / 915mm
Power unit width	24" / 610mm
Power unit height	45" / 1143mm
Motor	10HP / 7.5kW
Electrical service	230-460V, 3 phase, 60HZ
Rated current	26.8amps @ 230 / 13.4amps @ 460
Reservoir	30 US Gal / 113 liters
Output - single vane pump	12 GPM - 2150 PSI / 45.5 LPM - 145 BAR



Dies for ESCO® Mark 87 swager:

**Die Size:** 2" x 3½"

**Open Channel Dies for SS Fittings:** 1/8" - 7/8"

**Tapering Dies for Carbon Steel Sleeves:** ¼" - ¾"

**Ferrule Dies:** Midget

**Forged Socket Dies:** ¼" - 5/8"

**NOTE:** Dies are not included with the swager. ESCO Mark 87 dies are only interchangeable with other ESCO Mark 87 and Mark 75 swager dies.

**NOTE:** See ESCO Swage Instruction Manual (P6000RIG) for proper die selection and swage techniques.

Swaging Capabilities Sleeves	Ferrules
SS 1pc ¾"	Midget
SS 2pc 7/8"	
SS Sing. 5/8"	Sockets
CS Sing. ¾"	



## Mark 100 Swager



Electrically operated foot controls provide precise control. Controls can be positioned for maximum operator comfort.



Sight glass indicates the hydraulic oil level and temperature.



Convenient, easy-to-read gauge indicates when oil filter needs service.

### Specifications:

#### Mark 100 Swager (Part No. 4090045)

Weight	3120 lb / 1415 kg
Swager height	54" / 1372mm
Swager width	42" / 1067mm
Swager length	52.5" / 1334mm
Die work height from floor	38" / 965mm
Cylinder diameter	6.5" / 165mm
Recommended floor area (Swager and Power Unit)	6' x 10' / 1.8m x 3.0m

#### Hydraulic Power Unit

Weight (dry)	470 lb / 213 kg
Power unit length	36" / 915mm
Power unit width	24" / 610mm
Power unit height	45" / 1143mm
Motor	10HP / 7.5kW
Electrical service	230-460V, 3 phase, 60HZ
Rated current	26.8amps @ 230 / 13.4amps @ 460
Reservoir	30 US Gal / 113 liters
Output - single vane pump	12 GPM - 2150 PSI / 45.5 LPM - 145 BAR

#### Swaging Capabilities Sleeves

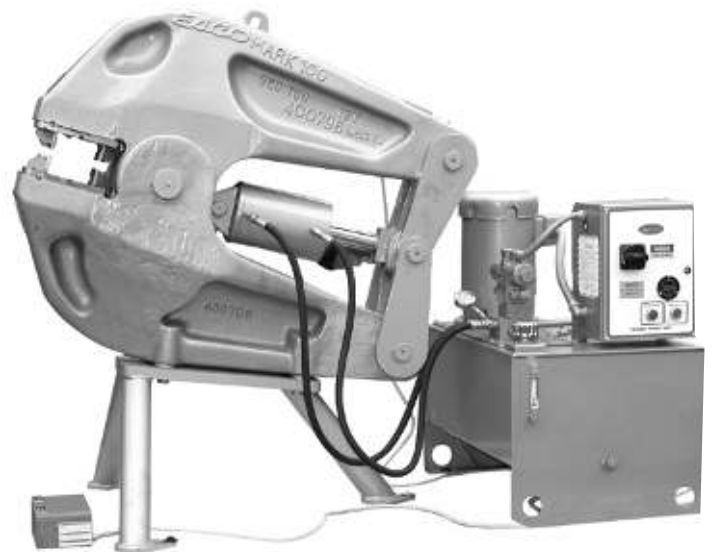
SS 1pc 1"	Midget, Dwarf, Bantam
SS 2pc 1"	
SS Sing. ¾"	Sockets
CS Sing. 1"	

#### Ferrules

Midget, Dwarf, Bantam

#### Sockets

SS ¾"



Dies for ESCO® Mark 100 swager:

**Die Size:** 2½" x 5"

**Open Channel Dies for SS Fittings:** 1/8" - 1"

**Tapering Dies for Carbon Steel Sleeves:** ¼" - 1"

**Ferrule Dies:** Midget, Dwarf, Bantam

**Forged Socket Dies:** ¼" - ¾"

**NOTE:** Dies are not included with the swager. ESCO Mark 100 dies are only interchangeable with other ESCO Mark 100 and Mark 150 swager dies.

**NOTE:** See ESCO Swage Instruction Manual (P6000RIG) for proper die selection and swage techniques.

## Mark 150 Swager



Electrically operated foot controls provide precise control. Controls can be positioned for maximum operator comfort.



Sight glass indicates the hydraulic oil level and temperature.



To simplify maintenance, the power unit features a filter gauge to indicate when the filter should be changed.



Autolube system is standard eliminating manual lubrication.

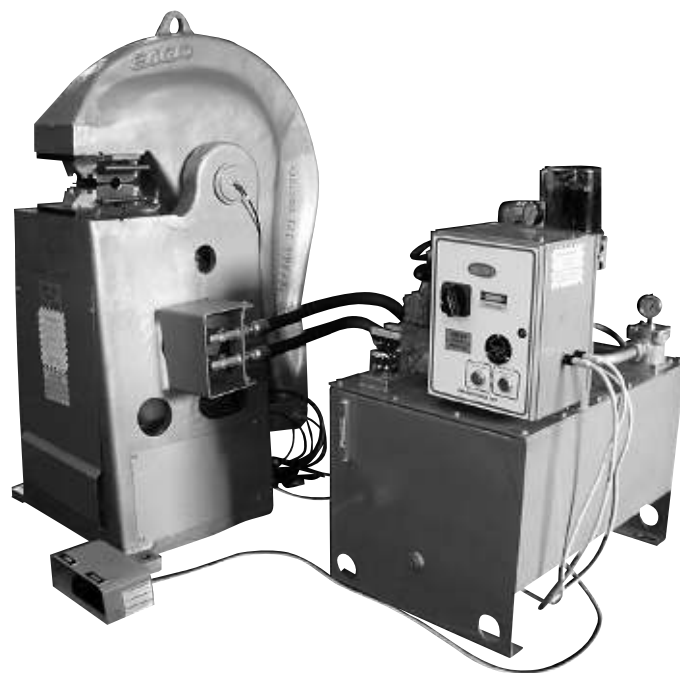
### Specifications:

#### Mark 150 Swager (Part No. 4134030)

Weight	6344 lb / 2878 kg
Swager height	61" / 1549mm
Swager width	43" / 1092mm
Swager length	45" / 1143mm
Die work height from floor	43" / 1092mm
Cylinder diameter	6.5" / 165mm
Recommended floor area (Swager and Power Unit)	10' x 10' / 3.0m x 3.0m

#### Hydraulic Power Unit

Weight (dry)	610 lb / 277 kg
Power unit length	36" / 915mm
Power unit width	24" / 610mm
Power unit height	45" / 1143mm
Motor	10HP / 7.5kW
Electrical service	230-460V, 3 phase, 60HZ
Rated current	26.8amps @ 230 / 13.4amps @ 460
Reservoir	50 US Gal / 189 liters
Output - single vane pump	12 GPM - 2150 PSI / 45.5 LPM - 145 BAR



**Dies for ESCO® Mark 150 swager:**

**Die Size:** 2½" x 5"

**Open Channel Dies for SS Fittings:** 1/8" - 1½"

**Tapering Dies for Carbon Steel Sleeves:** ¼" - 1½"\*

*\*Carbon steel sleeves 1" and larger should be pressed in standard open channel dies before being pressed in tapering dies.*

**Ferrule Dies:** Midget, Dwarf, Bantam, Light & Junior

**Forged Socket Dies:** ¼" - 1¼"

**NOTE:** Dies are not included with the swager. ESCO Mark 150 dies are only interchangeable with other ESCO Mark 150 and Mark 100 swager dies.

**NOTE:** See ESCO Swage Instruction Manual (P6000RIG) for proper die selection and swage techniques.

Swaging Capabilities Sleeves	Ferrules
SS 1pc 1"	Midget, Dwarf,
SS 2pc 1½"	Bantam, Light & Junior
SS Sing. 1¼"	<b>Sockets</b>
CS Sing. 1½"	SS 1-1/8"

## Mark 250 Swager



Electrically operated foot controls provide precise control. Controls can be positioned for maximum operator comfort.



Sight glass indicates the hydraulic oil level and temperature.



To simplify maintenance, the power unit features a filter gauge to indicate when the filter should be changed.

<b>Specifications:</b>	
<b>Mark 250 Swager (Part No. 4062217)</b>	
Weight	19,500 lb / 8845 kg
Swager height	74" / 1880mm
Swager width	54" / 1372mm
Swager length	96" / 2438mm
Die work height from floor	44¼" / 1124mm
Cylinder diameter	10" / 254mm
Recommended floor area (Swager and Power Unit)	12' x 12' / 3.6m x 3.6m
Standard die block size	4" x 7" / 102mm x 178mm
Optional die size	2½" x 5" / 64mm x 127mm
<b>Hydraulic Power Unit</b>	
Weight (dry)	610 lb / 277 kg
Power unit length	36" / 915mm
Power unit width	24" / 610mm
Power unit height	48" / 1219mm
Motor	10HP / 7.5kW
Electrical service	230-460V, 3 phase, 60HZ
Rated current	26.8amps @ 230 / 13.4amps @ 460
Reservoir	50 US Gal / 189 liters
Output - single vane pump	27 / 8 GPM - 2100 PSI / 102 / 30 LPM - 145 BAR

<b>Swaging Capabilities Sleeves</b>	<b>Ferrules</b>
SS 1pc 1"	Midget, Dwarf, Bantam, Light & Junior
SS 2pc 2½"	
SS Sing. 2¼"	
	<b>Sockets</b>
CS Sing. 2½"	SS 2" Forged 2"



Dies for ESCO® Mark 250 swager:

**Die Size:** 4" x 7"

**Open Channel Dies for SS Fittings:** 1-5/8" - 2½"

**Tapering Dies for Carbon Steel Sleeves:** 1¾" - 2½"\*

*\*Carbon steel sleeves 1" and larger should be pressed in standard open channel dies before being pressed in tapering dies.*

**Forged Socket Dies:** 1¼" - 2"

**Optional Die Size:** 2½" x 5"

**Note:** A die adapter is required in order to use 2-1/2" x 5" dies, and system hydraulic pressure needs to be reduced to 1150PSI.

**Open Channel Dies for SS Fittings:** 1/8" - 1½"

**Tapering Dies for Carbon Steel Sleeves:** ¼" - 1½"

**Ferrule Dies:** Midget, Dwarf, Bantam, Light & Junior

**Forged Socket Dies:** ¼" - 1-1/8"

**NOTE:** Dies are not included with the swager. ESCO Mark 250 dies are only interchangeable with other ESCO Mark 250 and Mark 200 swager dies.

**NOTE:** See ESCO Swage Instruction Manual (P6000RIG) for proper die selection and swage techniques.





**ESCO Group LLC – A Weir Group Division**  
2141 NW 25th Ave,  
Portland, OR 97210  
USA

**[www.esco.weir](http://www.esco.weir)**

P7001RIG-ENG-L0521

Copyright © 2020, 2021 ESCO Group LLC. All rights reserved.