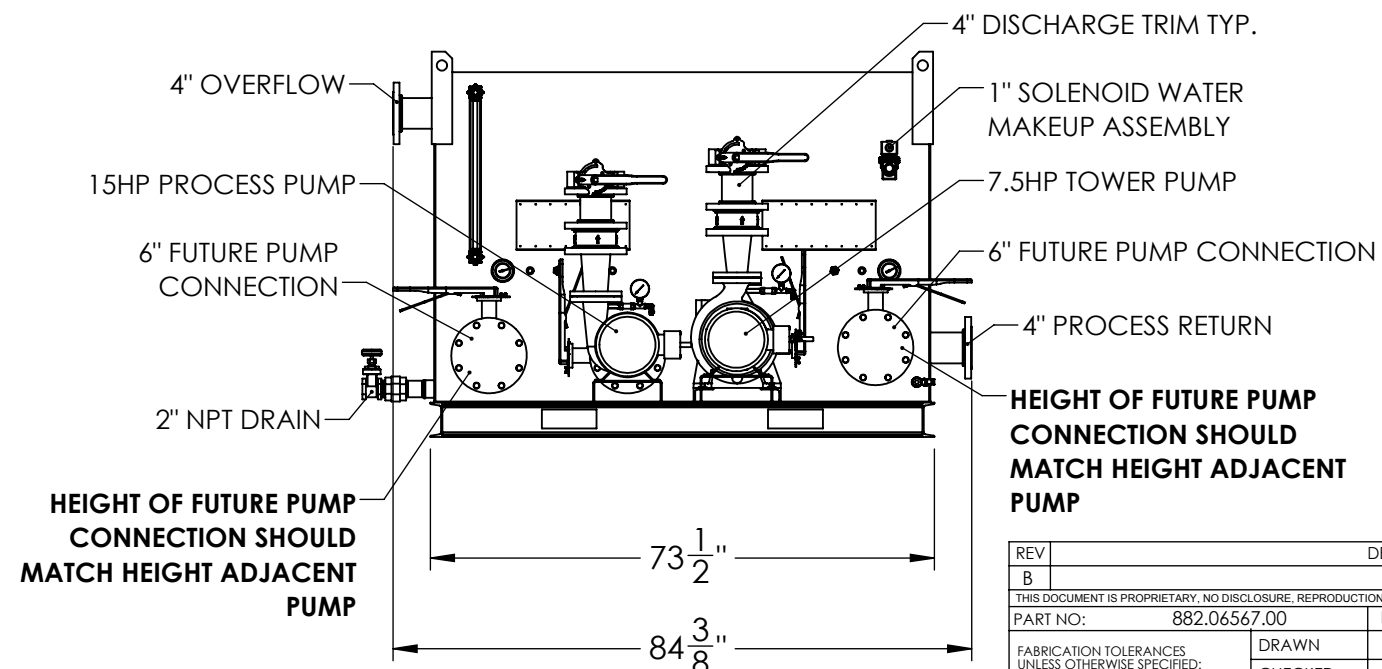
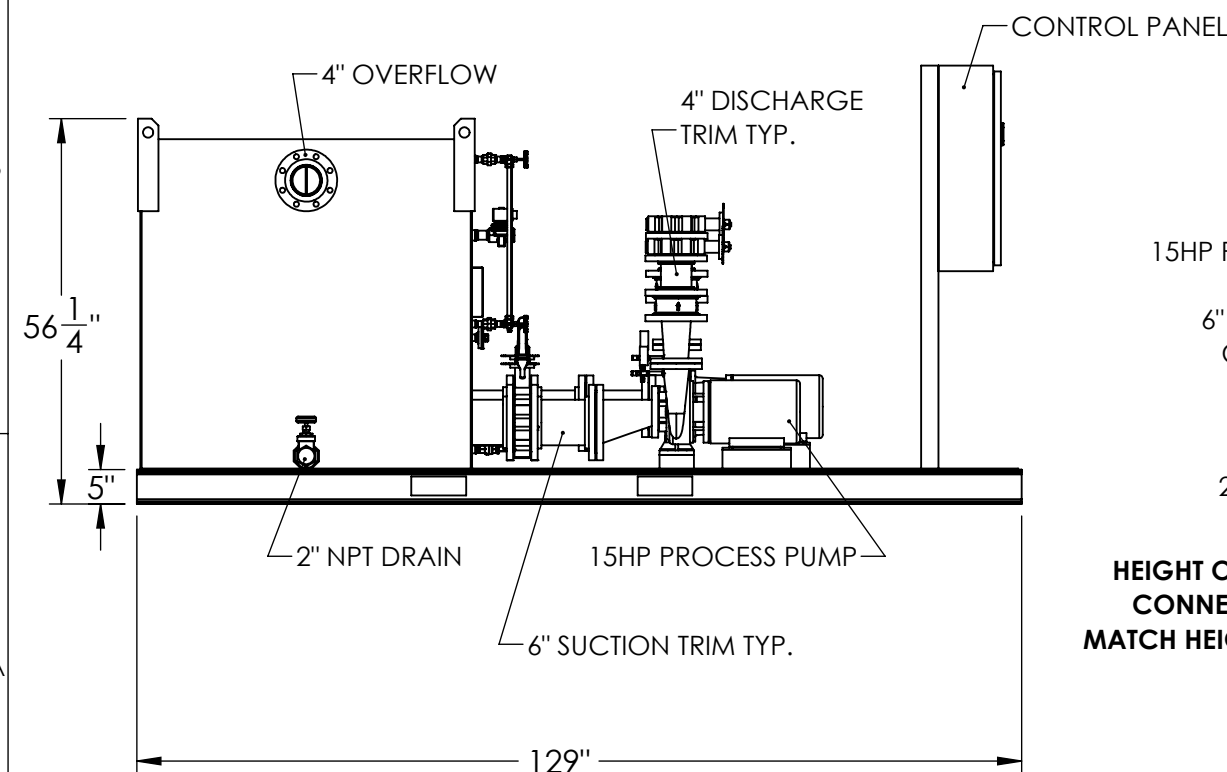
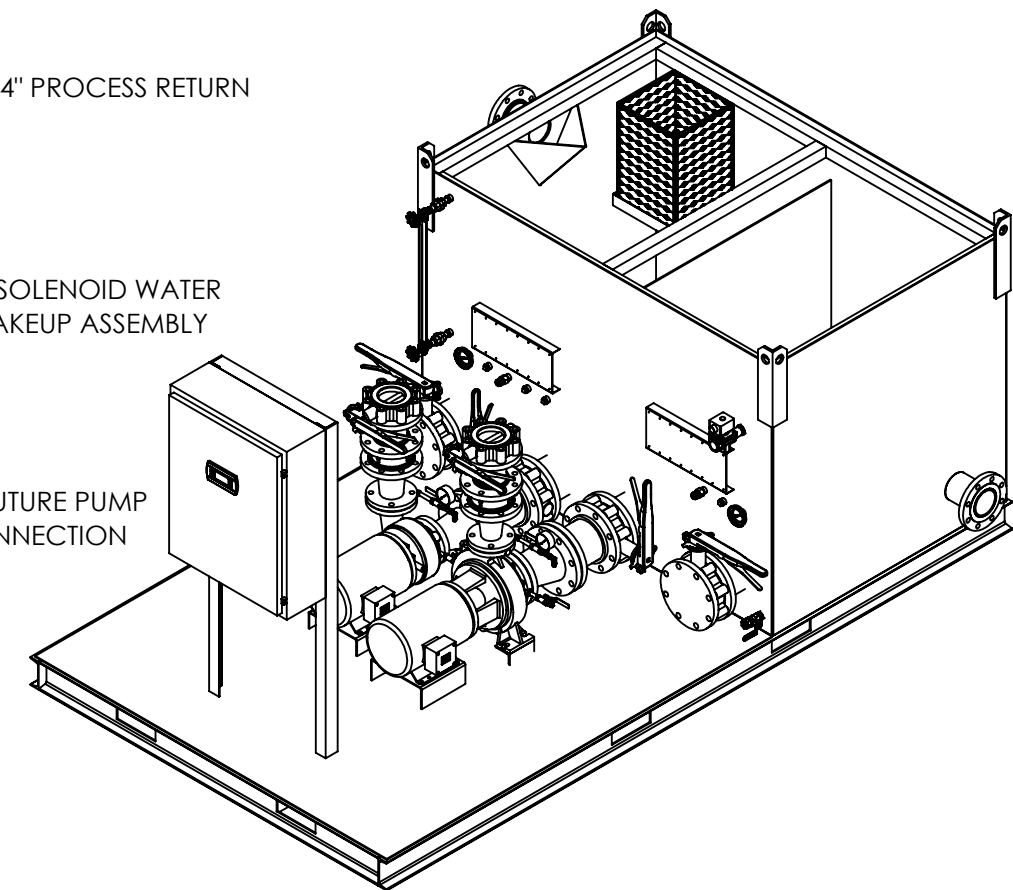
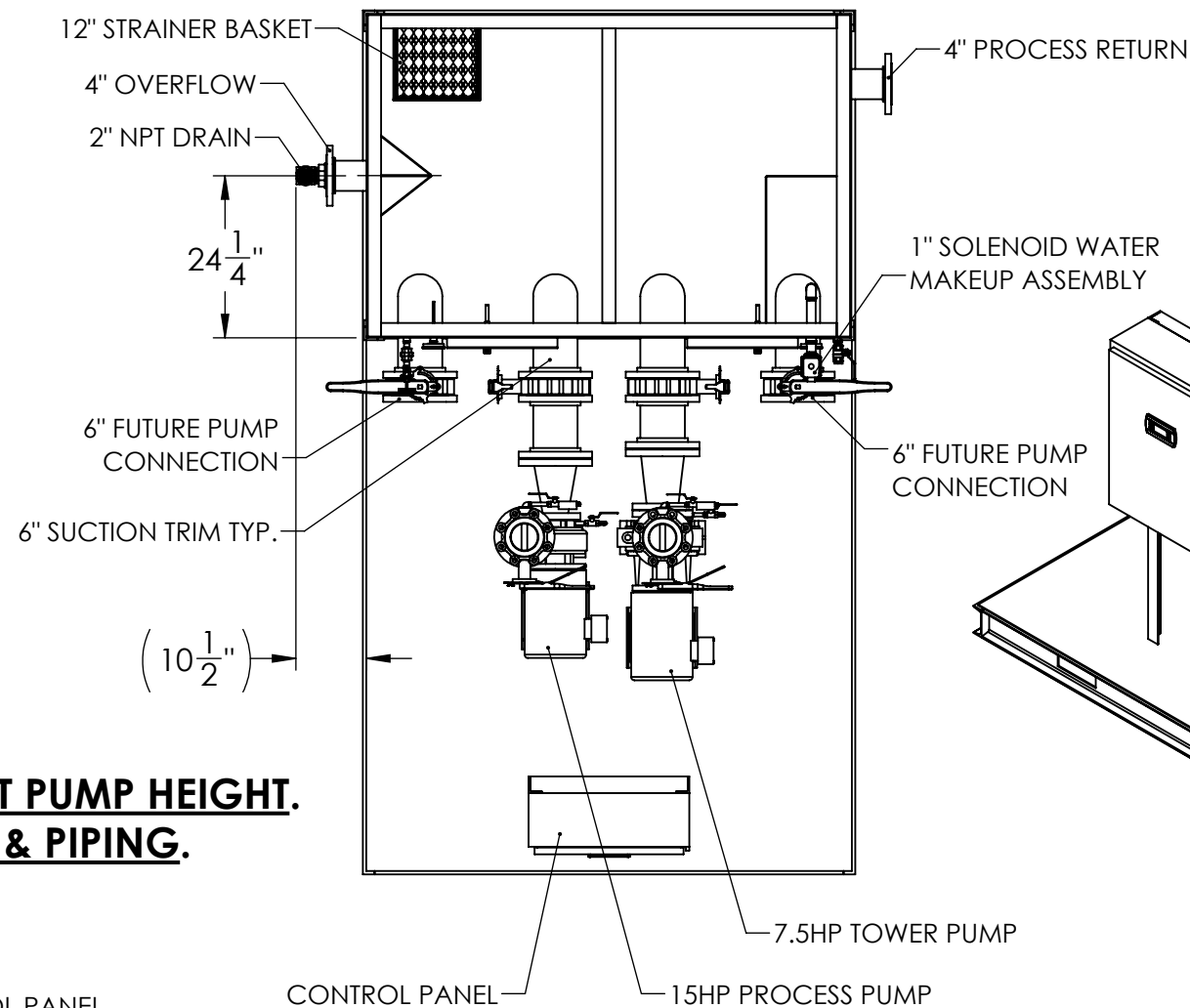


NOTES:

1. TANK IS CONSTRUCTED OF 3/16" THICK 304 STAINLESS STEEL PLATES.
2. TANK SUPPORT FRAME AND PUMP LEDGE ARE CONSTRUCTED OF CARBON STEEL C-CHANNELS WITH 3/16" THICK DIAMOND PLATE DECKING.
3. TANK INCLUDES A TWO PIECE COMPOSITE COVER WITH CUT OUT FOR 12" STRAINER BASKET.
4. TANK INCLUDES ONE TEMPERATURE GAUGES.
5. PRESSURE GAUGES ARE INSTALLED ON EACH PUMP.
6. CLOSE COUPLED PUMPS ARE SCOT #55F WITH A 15HP ODP MOTOR AND A 6.0" CAT IRON IMPELLER (075.01562.00) FOR THE PROCESS AND A SCOT #103 WITH A 7.5HP ODP MOTOR AND A 8.0" CAST IRON IMPELLER (A0544833) FOR THE TOWER PUMP. PUMPS WILL BE OPERATING ON 460/3/60 POWER.
7. TANK INCLUDES A 1" SOLENOID MAKE-UP ASSEMBLY AND A 2" DRAIN VALVE ASSEMBLY.
8. TANK FRAME, DECK PLATE, PUMPS, PIPING, AND TANK EXTERIOR IS TO BE PAINTED SATIN BLACK. DO NOT PAINT THE TANK INTERIOR.
9. MATCH FUTURE PUMP CONNECTIONS TO ADJACENT PUMP HEIGHT.
10. PROVIDE ENOUGH SPACE FOR FUTURE PUMPS.

- MATCH FUTURE PUMP CONNECTIONS TO ADJACENT PUMP HEIGHT.
- PROVIDE ENOUGH SPACE FOR FUTURE PUMPS & PIPING.



CONTROL PANEL HIDDEN IN
FRONT VIEW TO SHOW DETAIL

ORDER# 773524
ITEM# 335790Q

REV	DESCRIPTION	ECN	NAME	DATE
B			TAD	8/7/2018
THIS DOCUMENT IS PROPRIETARY. NO DISCLOSURE, REPRODUCTION OR USE OF ANY PART THEREOF MAY BE MADE WITHOUT THE EXPRESSED WRITTEN PERMISSION OF ACS GROUP. (V-01)				
PART NO:	882.06567.00	NAME	DATE	
FABRICATION TOLERANCES UNLESS OTHERWISE SPECIFIED: DIMENSIONS ARE IN INCHES	DRAWN	TAD	08/01/2018	
TOLERANCES: ANGULAR DIMENSIONS ±1° FRACTIONS ±1/32	CHECKED		-	
TWO PLACE DECIMAL ±0.06 THREE PLACE DECIMAL ±0.030	ENG APPR.		-	
	PRODUCT FAMILY			
	PRODUCT CATEGORY			
SHEET: 1 OF 2	WEIGHT	DRAWING MAY NOT BE PRINTED TO SCALE.	DWG NO.	REV
		SCALE: 1:28	882.06567.00	B

TNK,PMP,SS,T700D,
15-7.5,460/3/60,
POLYMER SCIENCES

