

# S series

## Single phase hopper loaders

The Piovan range of single phase hopper loaders allows for automatic granule conveying to drying hoppers, volumetric and gravimetric blenders, and processing machines.

### Benefits:

- No risk of material contamination or corrosion
- Absence of granule stagnation
- Maximum performance at every loading cycle
- Total safety
- Easy of cleaning
- Handling of all granular materials
- Soft start function
- Warning signals



The S single phase hopper loaders incorporate the vacuum motor. They can convey up to 200 kg/h of material and the distance can reach 20 m. The S series loaders are equipped with a new keypad control which includes a

powerful microprocessor.

The display and keyboard grant a simple and quick access to all the functions. The RS485 serial communication port (modbus protocol) is included as standard.

**Wf** Winfactory 4.0  
4.0 R E A D Y

The high reliability of the Piovan single phase loaders is ensured by two devices included in the standard configuration, considerably increasing the vacuum pump's life:

- Soft start function, which reduces the wear out of the brushes and the risk of damaging the motor.
- Warning signals indicating the necessity to replace the brushes.

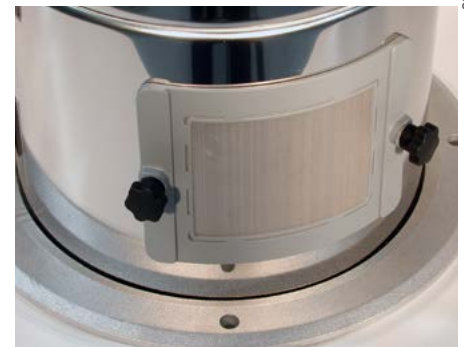
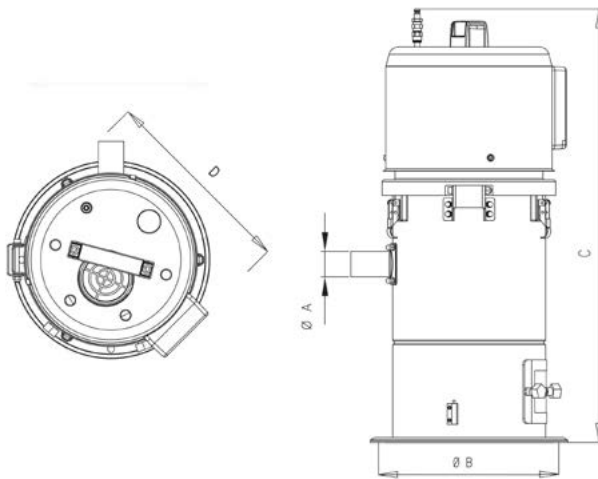
### Standard version

- 1 kW double step vacuum motor.
- Paper or fabric filter.
- Automatic filter cleaning device (by means of compressed air).

- Filter cleaning air exhaust and inspection door with stainless steel mesh protection.
- Magnetic level sensor.
- Control box with keypad, including the serial port and LEDs for the indication of working status and alarms.
- Aluminum flange which allows the 360° rotation for a flexible positioning.

### Options

- VP proportioning valve.
- Acoustic alarm.



991A020 - Disclaimer: data in this document may be out of date. Please consult technical data sheet

TECHNICAL DATA		S 50	S 52	S 55
Voltage / Frequency	V/Hz	230/50-60		
Motor power	W	1000		
Volume	dm <sup>3</sup>	1.5	5	10
Static vacuum	kPa	21		
Maximum noise level	dB(A)	83		
Dimension A	mm	40	40	40
Dimension B	mm	185	280	280
Dimension C	mm	450	595	680
Dimension D	mm	245	310	310
Weight	kg	9	11.5	12