


From: Bodor Laser Inc.	To: PJ	Oct 17th ,2022
Address: 1690 Plum Grove Road Schaumburg IL	Company: SMC	NO.: 20221017004
Phone:630-339-9088		Validity:in 20 days

FIBER LASER CUTTING MACHINE A3T

A3T Photo	Laser Power	Price
	6KW	

Loading Container	1* 40HQ
Freight&Tariff	Included
Installation & Training Cost	Included
Transportation	By Sea
Accessories	Centrifugal fan,Water Chiller
	Laser protective glasses,Transformer
Payment Terms	30% down payment,70% before shipment.
Warranty	Three years limited warranty for main parts.One year free labor.

Basic Parameter

Working area	3048mm*1524mm(10'x5')
Max. linkage speed	100m/min(328ft/min)
Tube size range	Round tube $\Phi 20\text{-}\Phi 230\text{mm}$ Square tube $\square 20 - \square 160\text{mm}$ Rectangular tube : 170mm \geq Side length \geq 20mm, Circumscribed circle diameter \leq 230mm
pneumatic chuck maximum load	200kg 33.4kg/m
Maximum Tube length	6m (20')

Configuration

Laser source	Bodor Power
laser head	BodorGenius

Machine bed	Mortise-and-tenon type plate welded segmented bed
Chuck drive types	pneumatic chuck
Max. length of tube	6m (20')
X-axis、Y-axis、Z-axis Servo motor and driver	Bodor
Linear Rails	Made in Taiwan
Rack	Made in Taiwan
Control system	Bodor Thinker
Display size	21.5 inches
Intelligent alarm	Yes
Acceptable file formats, sheet cutting	G file、DXF、DWG、PLT、ENG
Acceptable file formats, pipe/tube cutting	IGS
Water Chiller	Yes
Dust removal	Optional
Power Requirements	220V/440V/480V 60HZ 3PHASE (Up to Clients Power Requirement)
Total power capacity/current with 6KW source	50.6KVA/76.9A
Total power capacity/current with 3KW source	44.3KVA/67.2A
Total power capacity/current with 1.5KW source	32.9KVA/49.9A
Intelligent Function	
Bodor Lightning perforation technology	Yes
High Speed Cutting Expert Database	Yes
Automatic adjustment of cutting gas pressure	O2
Automatic tube inspection	Edge-seeking, center-finding
Auto-focus of laser head	Yes
Laser cutting technology expert database	Yes
Ergonomic Remote Control (Bodor Mango®)	Yes
Touchscreen Display	No
Active obstacle avoidance function	Yes
Angle steel, channel steel cutting	Yes
High quality Cutting Expert Database	Yes
Anti-slag Protection	Yes
Linear rail self-lubrication	Yes

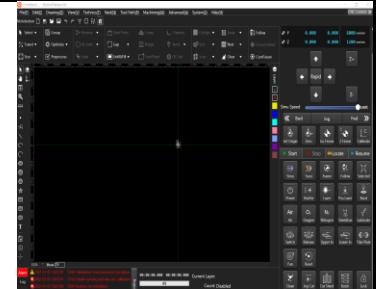
Gas-saving steady flow nozzle	Yes
Intelligent maintenance reminder	Yes
BodorCloud sevice	Yes
WIFI internet connection	Yes
Operating parameters	
Table load bearing	750kg
Machine overall dimensions	8641*3870*1861mm
Overall weight	3900kg
Z axis travel	315mm
Max. acceleration	1.5G
Positioning accuracy	±0.05mm
Repositioning accuracy	±0.03mm
Requirements for tubes	<p>Diameter<φ50mm Wall thickness of tubes≥1.2mm ; Diameter≥φ50mm≥1/40 Wall thickness≥2.5% of Diameters of tubes</p>
Min. tube material surplus	150mm
W axis rotation angle	Unlimited n*360
Max. rotational speed of W axis	60RPM
A-T6U axis positioning accuracy	0.05mm
A-T6U axis repositioning accuracy	0.03mm
U axis maximum moving speed	25m/min
□20mm square position size difference	≤0.50mm
A3T INTRODUCTION	



Samples



Key Configuration Photos



Laser resonator

Cast iron bed

Bodor thinekr 3.0



Bodor Genius Laser heads

Screen Display

Water Chiller



Chuck



【Option】 Laser fume filter



【Option】 Air Compressor

Cutting Parameters

Reference table of laser cutting process parameters

bodor

	Power	(mm)	1mm	2	3(1/8")	4	5	6(1/4")	8	10	12(1/2")	14	16	18	20	25	30	35	40
Carbon steel (Q235A) 02	22kW	speed m/min (1m=3.3ft) (1m=39.3in)	9—11	5—7.5	3.5—5.5	3.5—5	3.3—4.8	3.0—4.2	2.5—3.9	2.0—3.8	1.6—3.8	1.5—3.8	1.4—3.7	1.4—3.6	1.5—3.5	1.0—3.0	0.8—2.2	0.6—1.0	0.5—1.1
	12kW		9—11	5—7.5	3.5—5.5	3.5—5	3.3—4.8	3.0—4.2	2.5—3.8	2.2—3.6	1.2—3.5	1.7—3.3	1.2—3.1	1.0—2.7	0.6—2.4	0.5—1.6	0.3—1.0	0.3—0.7	0.2—0.4
	6kW		8—10	5—7.5	3.5—5	3.0—4.5	3.0—4.2	2.5—3.5	2.2—3.2	1.8—2.5	1.2—2.1	1.2—1.8	0.8—1.5	0.6—1.2	0.5—0.8	0.3—0.55			
	3kW		8.0—10	5.5—7.5	3.0-4.0	2.8-3.5	2.6-3.2	2.5-2.6	1.6-1.8	1.4-1.6	1.0-1.4	0.8-0.9	0.7-0.8	0.6-0.7	0.5-0.6				
	2kW		8.0—10	4.0—6.0	3.0—4.0	2.8-3.3	2.2—2.8	1.8-2.3	1.2-1.7	1.0-1.2	0.8-1.0	0.6-0.85	0.6-0.75	0.5-0.6					
	1.5kW		8.0—10	4.5—5.5	2.5—3.4	2.1—2.4	2.0—2.5	1.6—1.9	1.0—1.2	0.7—0.9	0.7—0.8	0.5—0.7							
	1kW	8.0—10	4.5—5.5	2.4—3.0	1.8-2.2	1.6-1.8	1.2-1.3	0.6-0.8	0.5-0.7										
		Thickness	1	2	3(1/8")	4	5	6(1/4")	8	10	12(1/2")	14	16	18	20	25	30	35	40
Stainless steel (201) #2	22kW	speed m/min (1m=39.3in)	72—100	50—75	38—55	25—35	24—32	20—25	15—19	10—13.5	8.0—10	6.0—8.5	4.0—6.0	3.0—3.5	2.0—3.0	1.5—2.2	1.2—1.5	0.4—0.8	0.3—0.6
	12kW		70—85	40—66	35—45	20—32	18—25	12—15	8—12	6.0—8.0	4.0—5.5	3.0—5.0	2.2—2.8	1.2—2.0	1.0—1.6	0.5—0.8	0.3—0.6	0.3—0.5	0.3—0.5
	6kW		42—52	20—33	15—22	10—15	7.0—12	4.8—9.0	3.0—4.0	1.6—2.5	0.8—1.5	0.6—1.2	0.5—1.0	0.4—0.8	0.3—0.6	0.2—0.4			
	3kW		30—55	12—30	6.0-10.0	4.0-6.0	3.0—5.0	2.0-3.2	1.0-1.8	0.5-0.85	0.4-0.5								
	2kW		24—50	9.0-17	4.0-7.0	3.2-4.0	2.0-2.7	1.2-1.8	0.7-1.2										
	1.5kW		20—30	8.0-16	3.0-5.5	1.5-3.2	0.7-1.5	0.7-1.3											
	1kW	18—20	5.0-7.0	2.2-4.0	1.2-2.3														
		Thickness	1	2	3(1/8")	4	5	6(1/4")	8	10	12(1/2")	14	16	18	20	25	30	35	40
Aluminum #2	22kW	speed m/min (1m=3.3ft)	70—100	40—70	35—60	30—43	22—35	18—28	12—20	7.0—12.0	4.5—6.5	3.0—4.0	2.5—3.5	1.8—2.2	1.5—2.0	0.8—1.5	0.6—1.2	0.4—0.9	0.3—0.5
	12kW		60—85	38—50	30—40	20—30	15—25	10—15	7.0—12	4.5—8.0	4.0—5.0	1.8—2.7	1.5—2.5	1.0—1.8	0.9—1.5	0.6—0.9	0.3—0.8	0.3—0.6	0.3—0.4
	6kW		42—55	20—40	15—25	9.5—12	5.0—8.0	3.8—5.0	2.0—2.5	1.0—1.5	0.8—1.3	0.9—1.2	0.5—0.8	0.5—0.7	0.5—0.7	0.3—0.5			
	3kW		25—30	13—20	6.5-7.5	3.5-5.0	2.5-3.5	1.5-2.5	0.7-1.0										
	2kW		15—25	7-10	4.0-8.0	2.5-3.0	1.2-2.5	0.6-0.9											
	1.5kW		10—15	5.0-7.0	2.0-2.6	1.0-1.4	0.5-0.7												
	1kW	8-10	2.8-3.6	0.7-1.1															

Packing Photos



Packing in Factory



In Container



In Container Yard

ABOUT BODOR

A company of over 2,000 people only focusing on fiber laser cutting machines.

Local Sales & Engineer Service team in American.	Leading Manufacturer
Over 150 backbone researchers only into laser field.	
Bodor Super Factory covers over 60, 000 m ² .	
Exports of fiber laser cutting machine in 2019 are No.1 in China.	World Brand
Users of over 150 countries are happy with Bodor.	
Bodor gains patents and certifications (CSA, cTUVus, CE, FDA, ISO 9001, BV, SGS, etc.)	Honors
Became Listed Company in 2016, Red Dot Design Award in 2017.	

Bodor China



Bodor USA



