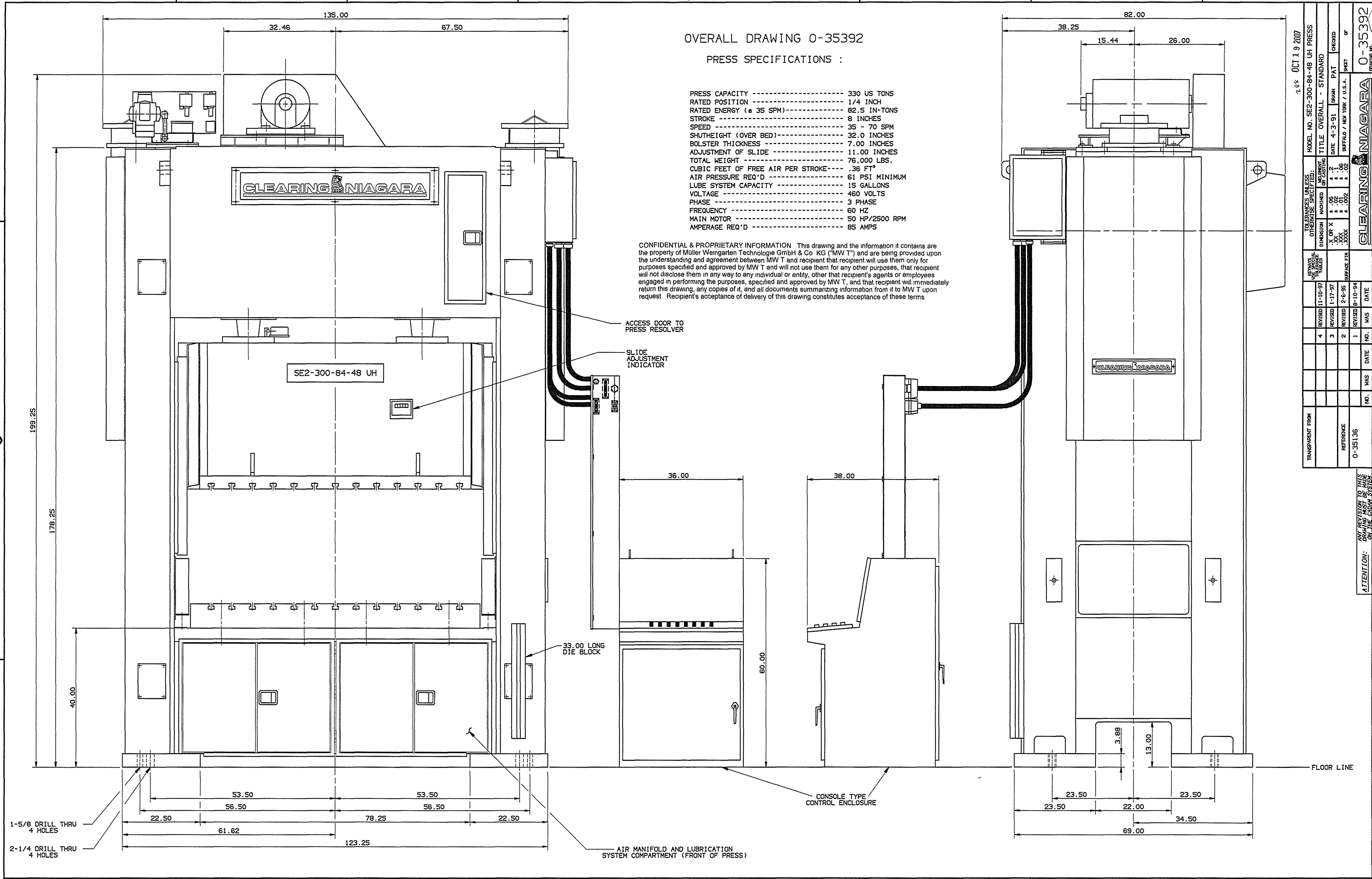


OVERALL DRAWING 0-35392

PRESS SPECIFICATIONS :

PRESS CAPACITY ----- 330 US TONS
 RATED POSITION ----- 1/4 INCH
 RATED ENERGY (@ 35 SPM) ----- 82.5 IN-TONS
 STROKE ----- 8 INCHES
 SPEED ----- 35 - 70 SPM
 SHUTHEIGHT (OVER BED) ----- 32.0 INCHES
 BOLSTER THICKNESS ----- 7.00 INCHES
 ADJUSTMENT OF SLIDE ----- 11.00 INCHES
 TOTAL WEIGHT ----- 76,000 LBS.
 CUBIC FEET OF FREE AIR PER STROKE ----- .36 FT³
 AIR PRESSURE REQ'D ----- 61 PSI MINIMUM
 LUBE SYSTEM CAPACITY ----- 15 GALLONS
 VOLTAGE ----- 460 VOLTS
 PHASE ----- 3 PHASE
 FREQUENCY ----- 60 HZ
 MAIN MOTOR ----- 50 HP/2500 RPM
 AMPERAGE REQ'D ----- 85 AMPS

CONFIDENTIAL & PROPRIETARY INFORMATION This drawing and the information it contains are the property of Müller Weingarten Technologie GmbH & Co KG ("MW T") and are being provided upon the understanding and agreement between MW T and recipient that recipient will use them only for purposes specified and approved by MW T and will not use them for any other purposes, that recipient will not disclose them in any way to any individual or entity, other than recipient's agents or employees engaged in performing the purposes, specified and approved by MW T, and that recipient will immediately return this drawing, any copies of it, and all documents summarizing information from it to MW T upon request. Recipient's acceptance of delivery of this drawing constitutes acceptance of these terms.



OCT 19 2007

TOLERANCES UNLESS OTHERWISE SPECIFIED:				MODEL NO. SE2-300-84-48 UH PRESS	
FINISH	ASSEMBLY	DIMENSION		TITLE OVERALL - STANDARD	
XXX	X	OR X	XXX	DATE	4-3-91
XXX	X	OR X	XXX	DRAWN	PAT
XXX	X	OR X	XXX	CHECKED	OF
XXX	X	OR X	XXX	DATE	4-3-91
XXX	X	OR X	XXX	BUFFALO / NEW YORK / U.S.A.	
XXX	X	OR X	XXX	DRAWING NO.	
XXX	X	OR X	XXX	0-35392	
XXX	X	OR X	XXX	DRAWING NO.	
XXX	X	OR X	XXX	0-35392	

ANY REVISION TO THIS DRAWING MUST BE MADE ON THE CADAM SYSTEM