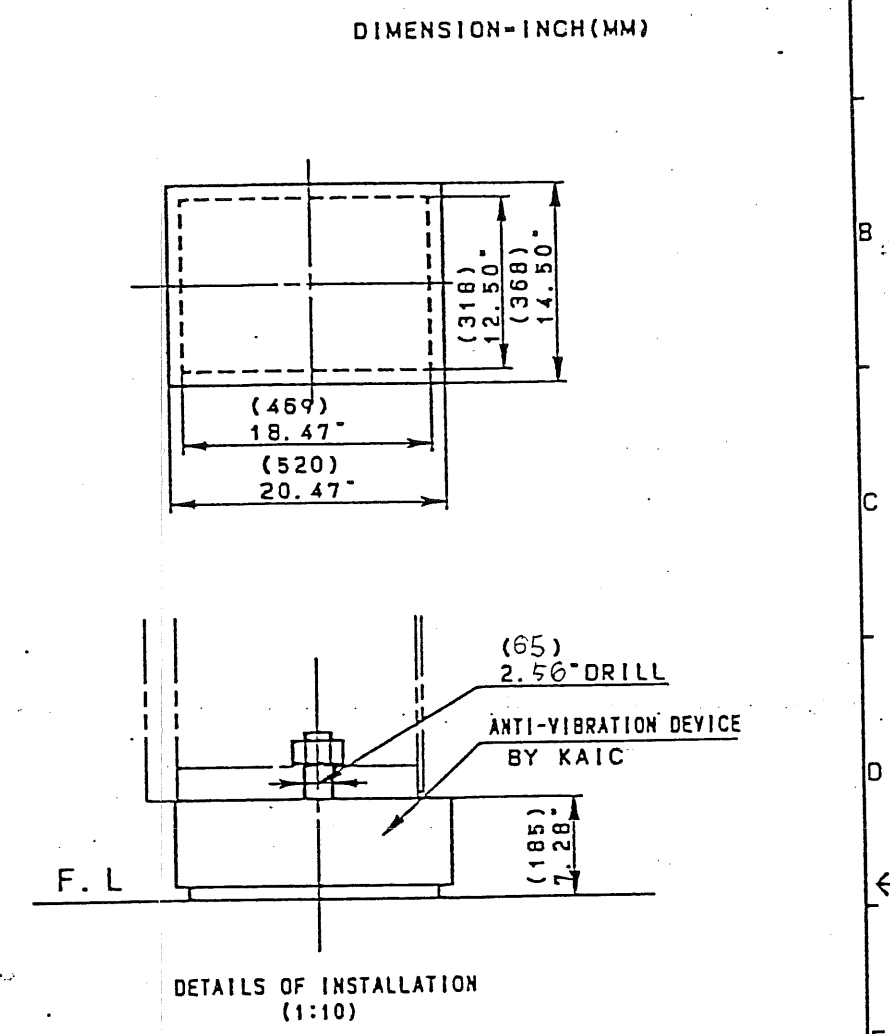
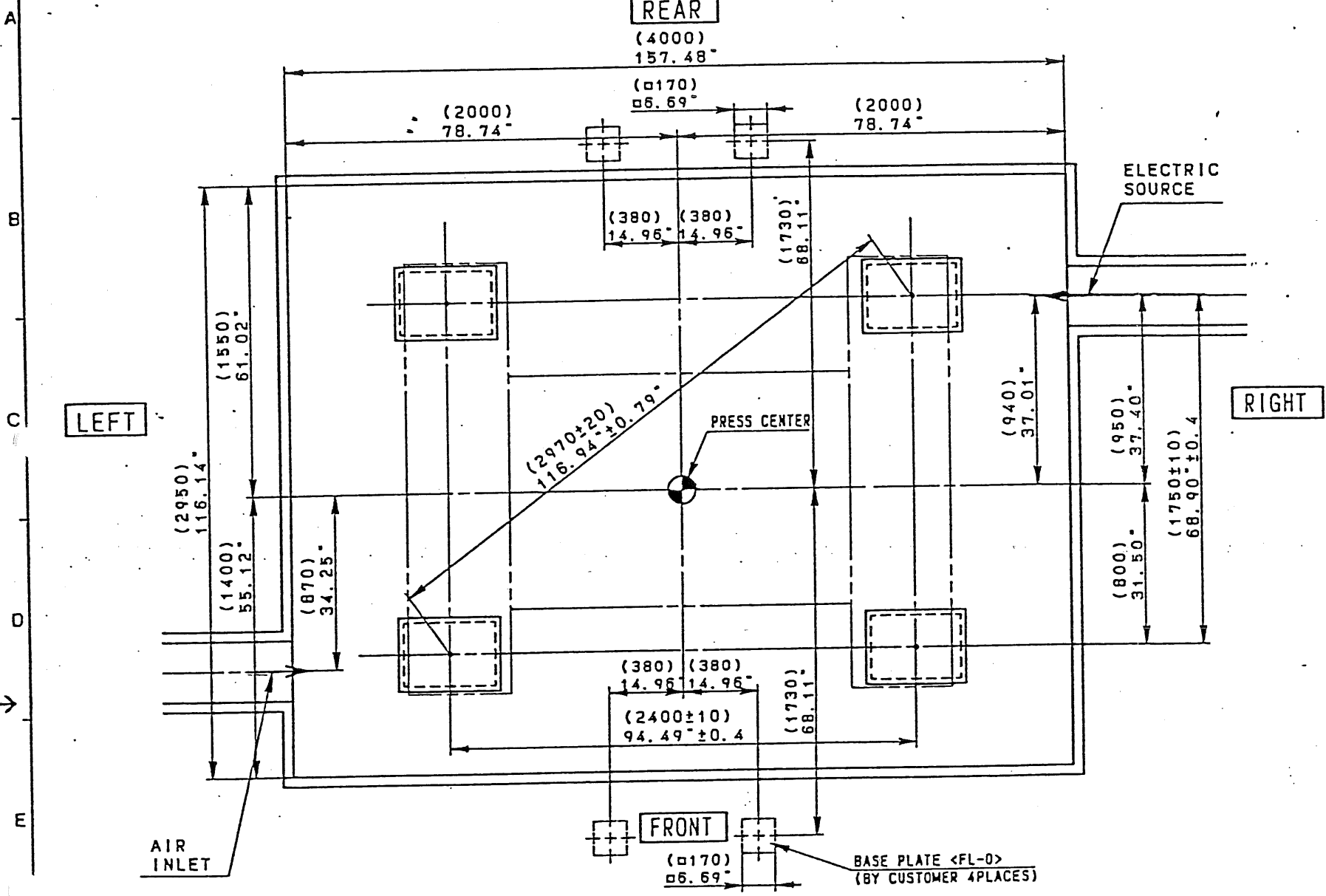


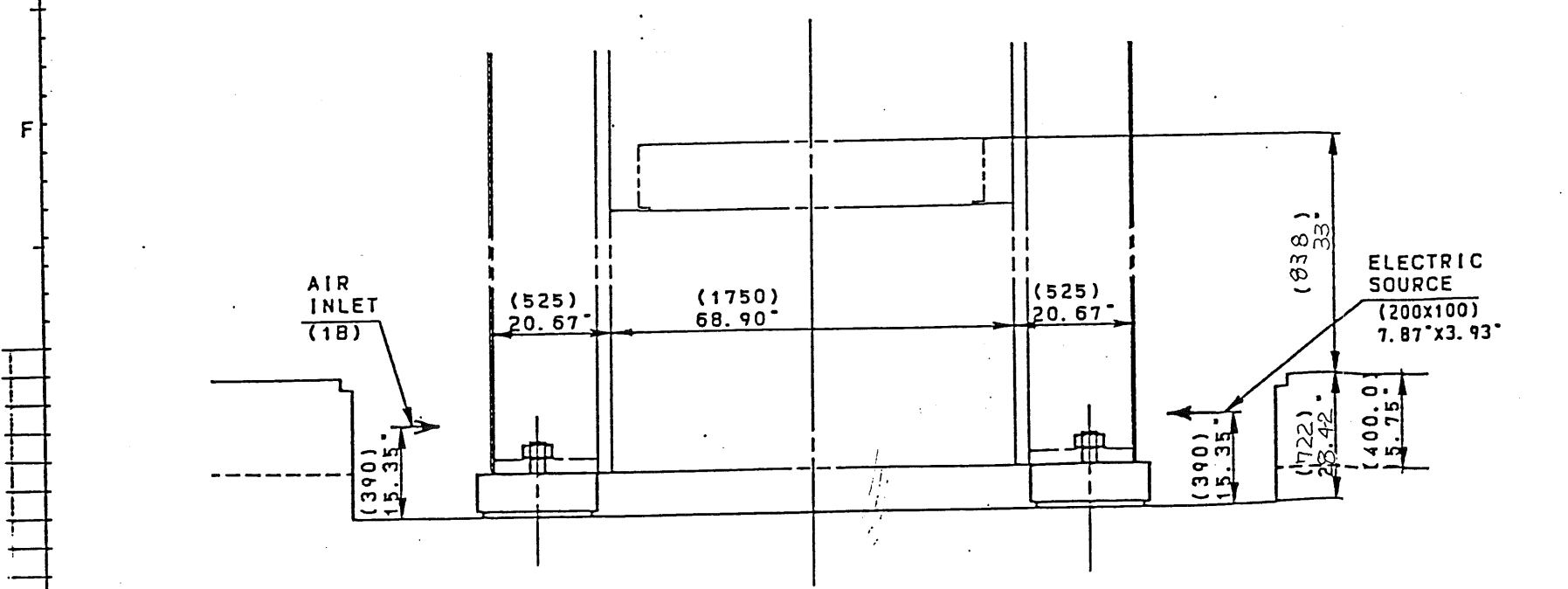


RANGE	OVER 20 TO 30	OVER 30 TO 40	OVER 40 TO 50	OVER 50 TO 60	OVER 60 TO 70	OVER 70 TO 80	OVER 80 TO 90	OVER 90 TO 100	OVER 100 TO 150	OVER 150 TO 200	OVER 200 TO 300	OVER 300 TO 400	OVER 400 TO 500
GENERAL TOLERANCE FOR MACHINING	±0.15	±0.2	±0.3	±0.4	±0.5	±0.6	±0.8	±1.0	±1.2	±1.5	±2.0	±2.5	±3.0

1	92-2-4112980	CODE NO.	XXXX	REVISION	11.11.14	THIS DRAWING MADE FOR E2M300-2	A301-2
△x.							
△x.							



- NOTE
- DESIGN, PROCUREMENT OF MATERIAL, AND WORKS OF THE FOUNDATION SHALL BE ACCOMPLISHED BY CUSTOMER.
  - PIPING AND WIRING WORKS OUTSIDE THE MACHINE SHALL BE ACCOMPLISHED BY CUSTOMER.
  - DIFFERENCE IN HEIGHT AMONG LEVEL PLATES SHOULD BE WITHIN 0.08 INCH AND HORIZONTALITY OF A LEVEL PLATE SHOULD BE WITHIN 0.006 INCH PER LENGTH OF 39.37 INCH.
  - WHEN DESIGNING THIS FOUNDATION, DYNAMIC FORCE (APPROX 60% OF THE MACHINE WEIGHT) SHOULD BE ADDED TO THE MACHINE WEIGHT.
  - TOTAL WEIGHT OF THE MACHINE (EXCEPT) IS 48 TON.



TO MESSRS:  
 OHI-AMERICA  
 E2M300-2NL(190M4A6)

SYMBOL	PART NAME	MATERIAL	HT/TREAT	REMARKS
	FOUNDATION VIEW			
DATE: 91.11.14 SCALE: 1:20 SIZE: 2 PART NO.: 192-2-4112980				

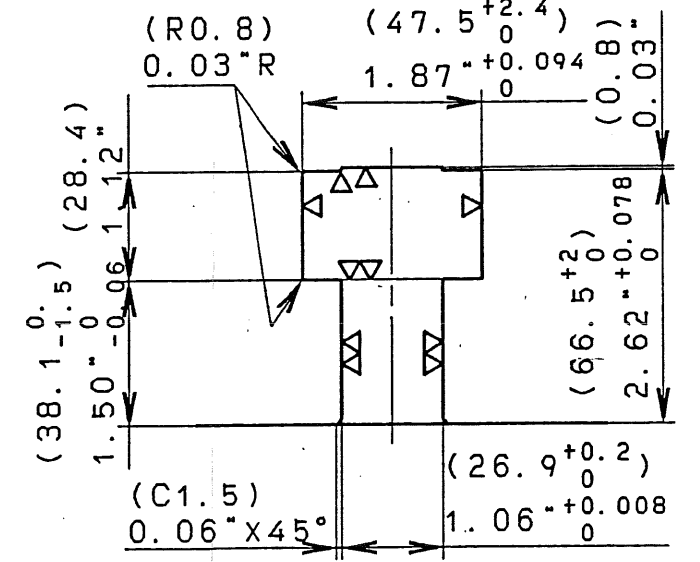
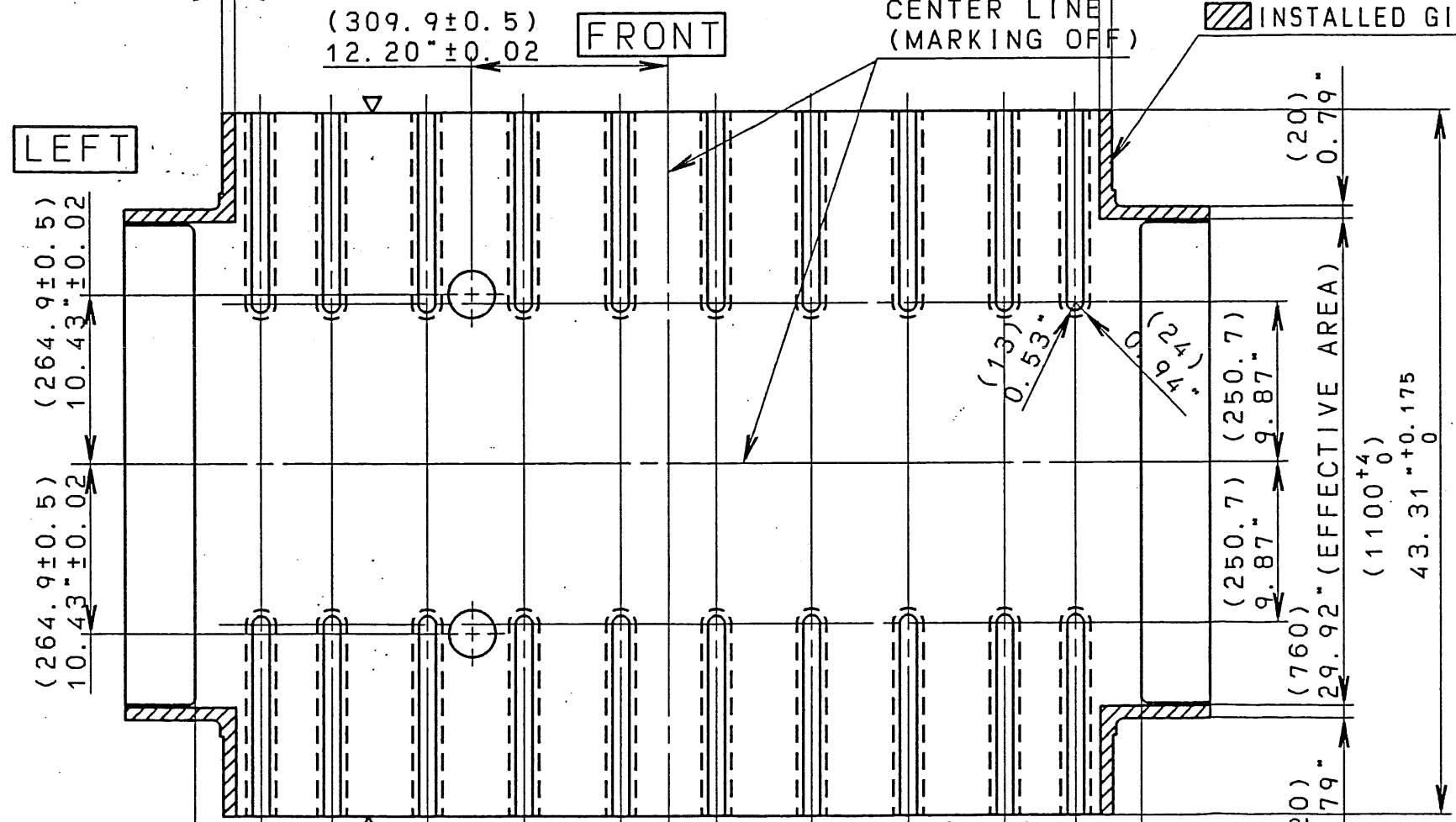
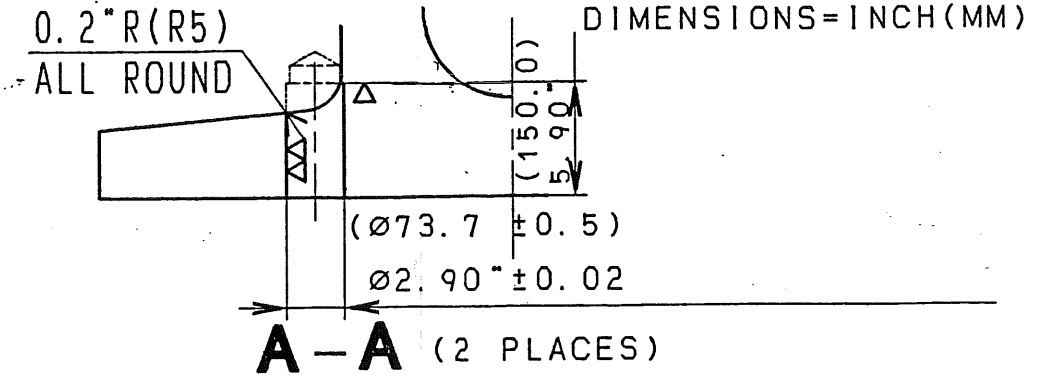
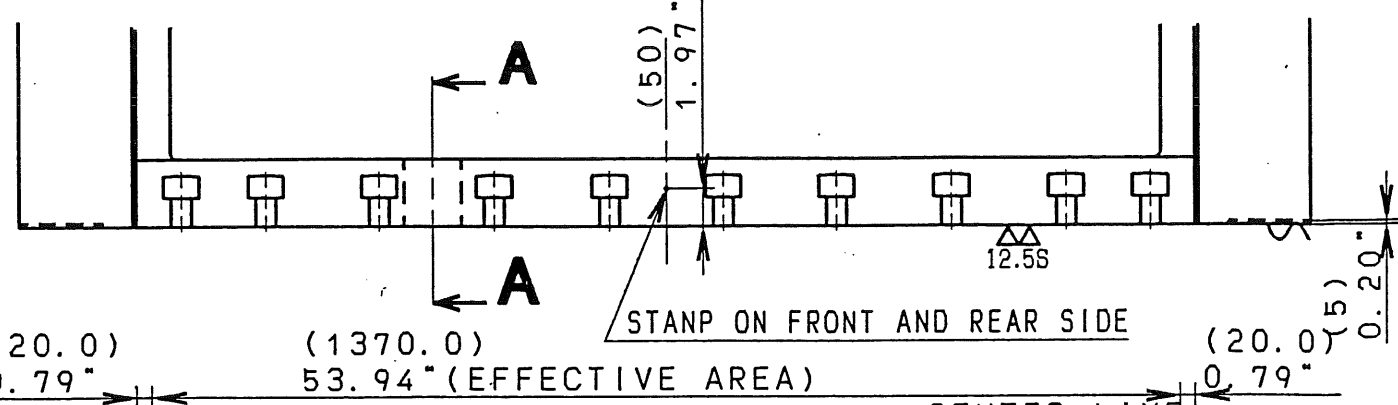
190M4A6	
APPLICATION	Q'TY
MATERIAL	
PART NO.	

GENERAL TOLERANCE FOR MACHINING	RANGE	OVER 0.5 TO 3	OVER 3 TO 6	OVER 6 TO 30	OVER 30 TO 120	OVER 120 TO 315	OVER 315 TO 1000	OVER 1000 TO 2000	OVER 2000 TO 4000	OVER 4000 TO 8000
	TOLERANCE	±0.15	±0.2	±0.5	±0.8	±1.2	±2	±3	±4	±5

GENERAL TOLERANCE SHALL CONFORM TO KES 04.052.0.

REVISION	'91.11.14	本図はE2M300-2用として作製する THIS DRAWING MADE FOR E2M300-2	A301-3
△X			
△X			

1192-3-4272520  
CODE NO. XXXX



TEE SLOTS (1:2)  
(20 PLACES)

TO MESSRS:  
OHI-AMERICA  
E2M300-2NL (190M4A6)

SYM.	PART NAME	MATERIAL	Q'TY/SET	MASS (kg)	REMARKS

190M4A6	1
30410-2/△	
APPLICATION	Q'TY

CAD図面管理不可 手書き変更不可 REVISE ONLY ON CAD	3RD ANGLE P.	MASS (kg)	X	HEAT TREATMENT	CASE DEPTH	MATERIAL
	PROJECT MANAGER 栗原	DESIGNER 堀川	CHECKED BY 馬場	DRAWN BY ばんば	COPIED BY	DATE '91.11.14
SIMILAR PARTS	APPROVAL	SCALE 1:10	SIZE 3	PART NAME BOTTOM OF SLIDE		PART NO. 1192-3-4272520△

DUPLICATE

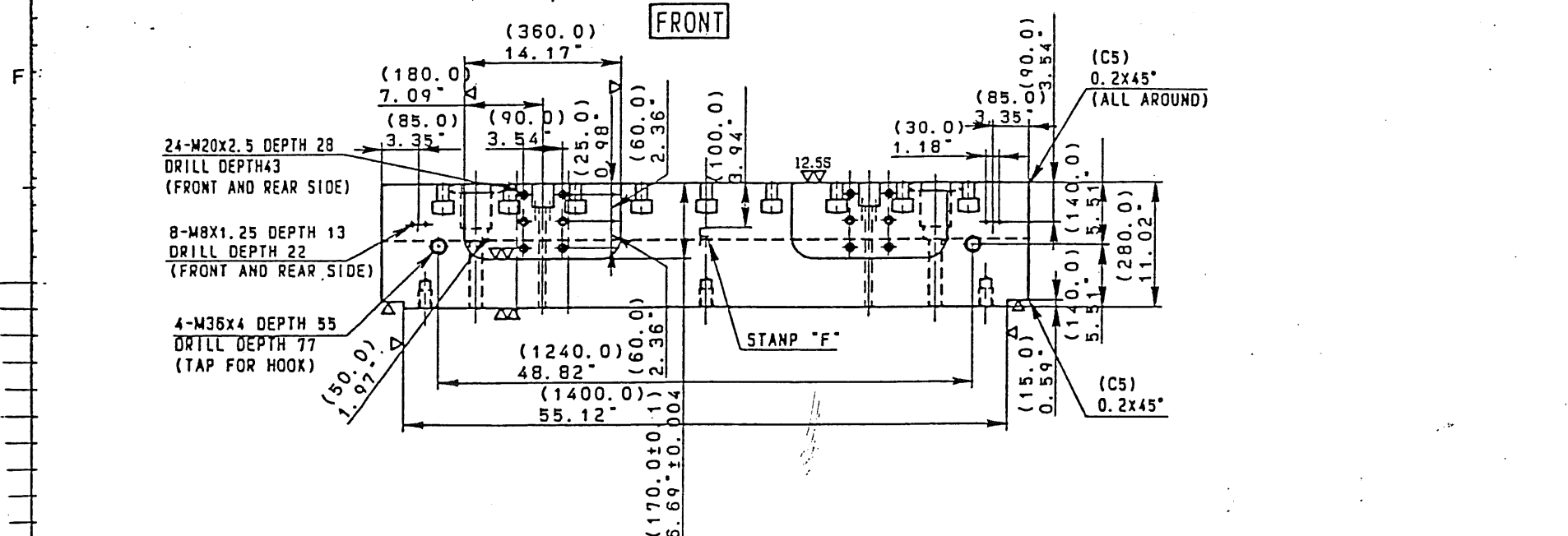
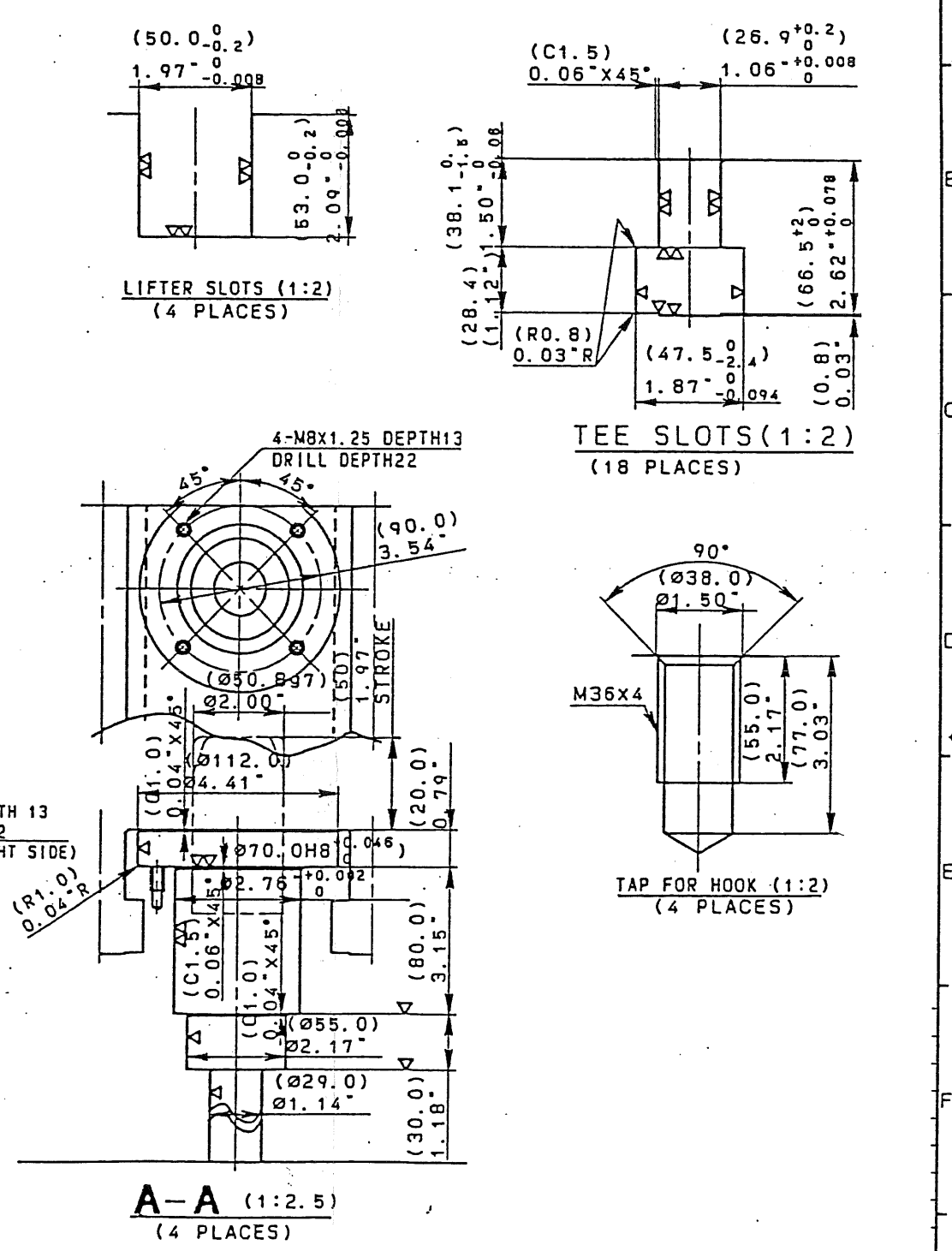
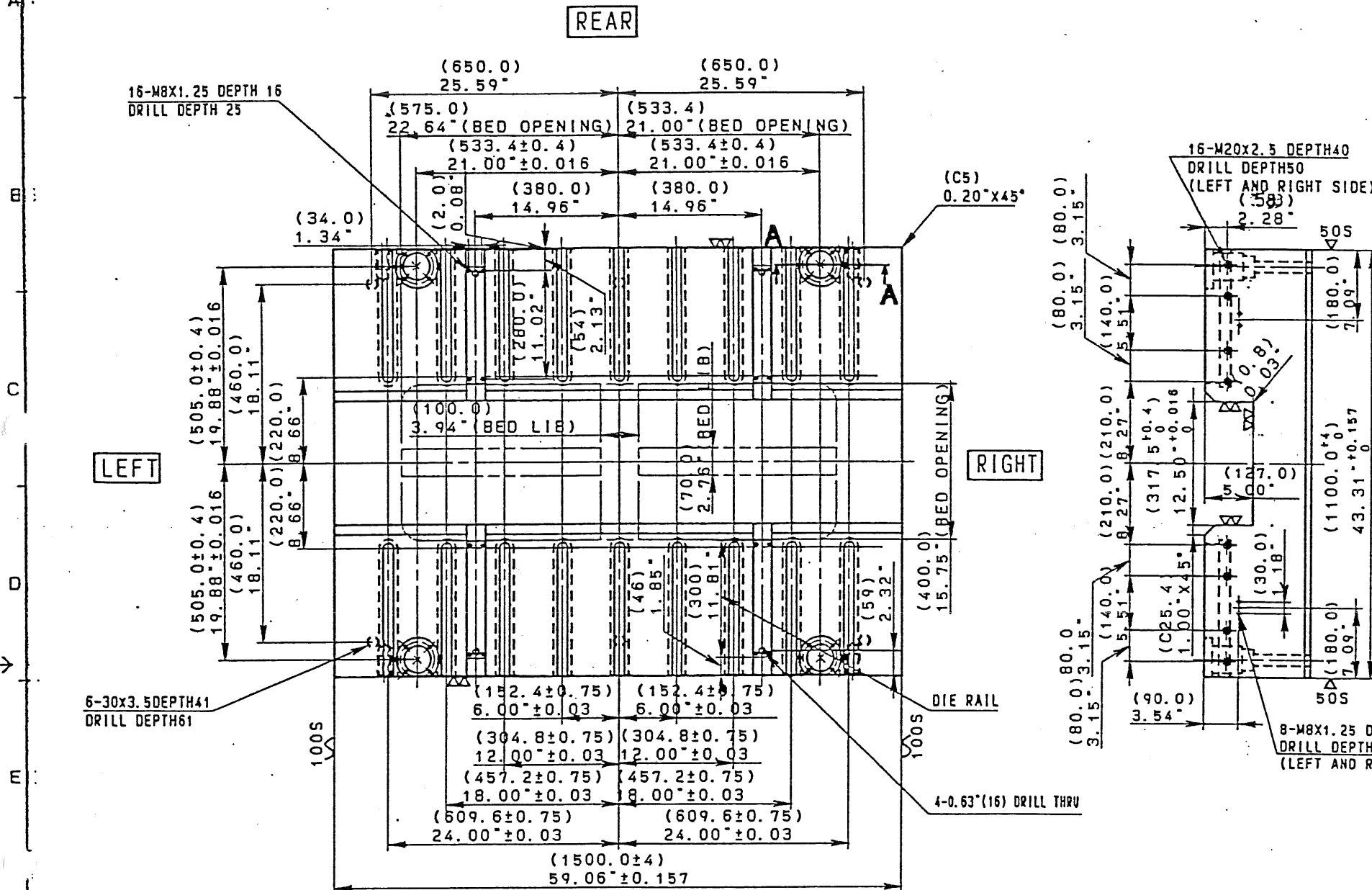
KOMATSU

KES A3-2  
9107

GENERAL TOLERANCE FOR MACHINING	RANGE	OVER 0.3 TO 0.5	OVER 0.5 TO 0.8	OVER 0.8 TO 1.2	OVER 1.2 TO 2.0	OVER 2.0 TO 3.0	OVER 3.0 TO 5.0	OVER 5.0 TO 10.0	OVER 10.0 TO 20.0	OVER 20.0 TO 50.0	OVER 50.0 TO 100.0	OVER 100.0 TO 500.0	OVER 500.0 TO 1000.0
TOLERANCE		±0.15	±0.2	±0.3	±0.5	±0.8	±1.2	±2	±3	±4	±5	±6	±8

GENERAL TOLERANCE SHALL CONFORM TO JIS B 04 032.0.

192-2-4112990	CODE NO. XXXX	REVISION 11.11.16	THIS DRAWING MADE FOR E2M300-2	A301-4
△x				
△x				



TO MESSRS:  
OHI-AMERICA  
E2M300-2NL (190M4A6)

SYM.	PART NAME	MATERIAL	S'TY/SET	MASS (KG)	REMARKS

190M4A6	1
60400-11	△
APPLICATION	Q'TY

MASS (KG)	2850	HEAT TREATMENT		CASE DEPTH		MATERIAL	SS400P
PROJ. ANGLE P.		DATE	91.11.14	PART NAME	BOLSTER		PAIN'T OR SURFACE TREAT. CODE
APPROVAL	SCALE	SIZE	1:10	2	PART NO.		192-2-4112990

DIMENSIONS-INCH(MM)