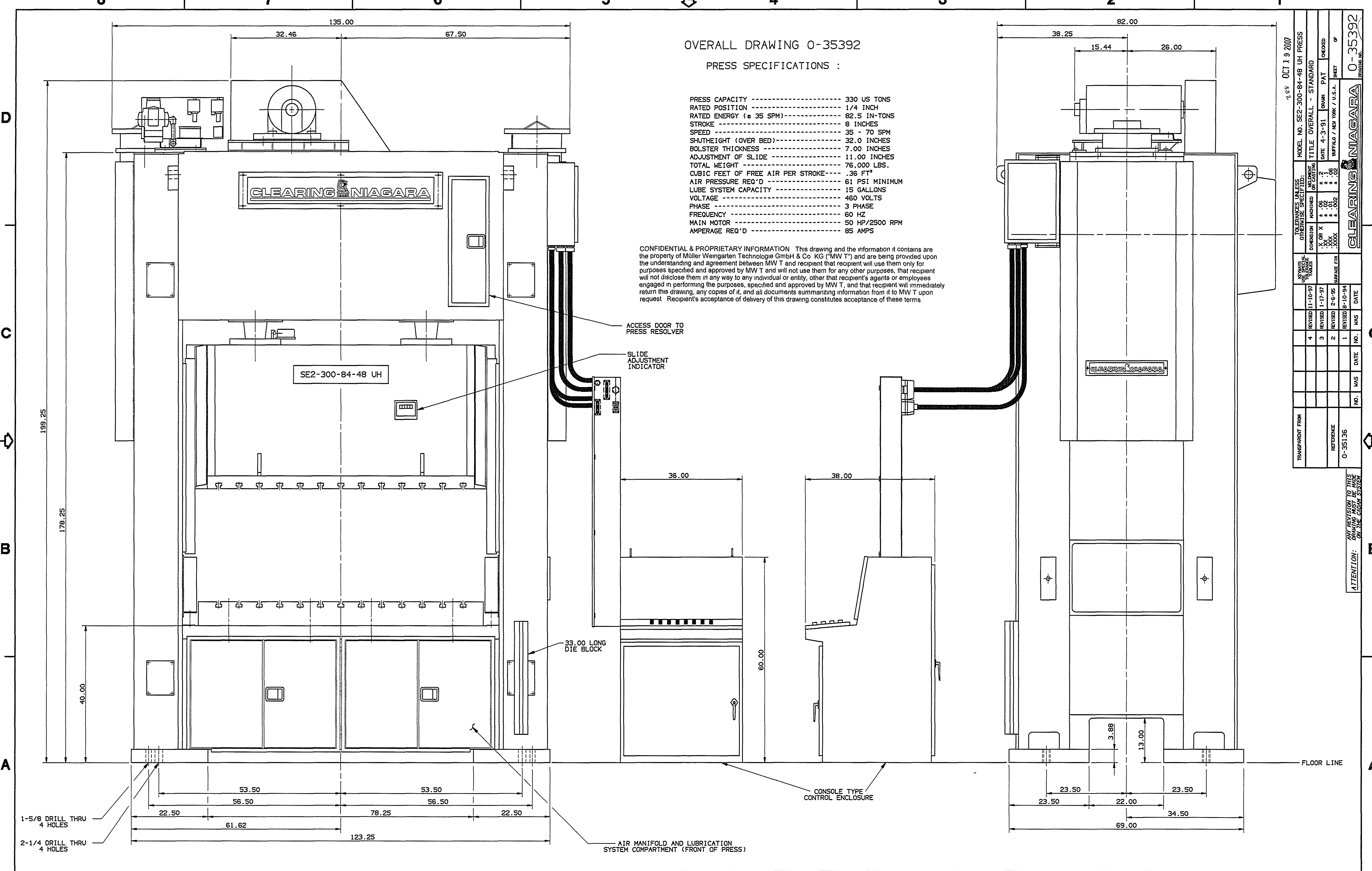


OVERALL DRAWING 0-35392

PRESS SPECIFICATIONS :

PRESS CAPACITY	-----	330 US TONS
RATED POSITION	-----	1/4 INCH
RATED ENERGY (@ 35 SPM)	-----	82.5 IN-TONS
STROKE	-----	8 INCHES
SPEED	-----	35 - 70 SPM
SHUTHEIGHT (OVER BED)	-----	32.0 INCHES
BOLSTER THICKNESS	-----	7.00 INCHES
ADJUSTMENT OF SLIDE	-----	11.00 INCHES
TOTAL WEIGHT	-----	76,000 LBS.
CUBIC FEET OF FREE AIR PER STROKE	-----	.36 FT ³
AIR PRESSURE REQ'D	-----	61 PSI MINIMUM
LUBE SYSTEM CAPACITY	-----	15 GALLONS
VOLTAGE	-----	460 VOLTS
PHASE	-----	3 PHASE
FREQUENCY	-----	60 HZ
MAIN MOTOR	-----	50 HP/2500 RPM
AMPERAGE REQ'D	-----	85 AMPS

CONFIDENTIAL & PROPRIETARY INFORMATION This drawing and the information it contains are the property of Müller Weingarten Technologie GmbH & Co KG ("MW T") and are being provided upon the understanding and agreement between MW T and recipient that recipient will use them only for purposes specified and approved by MW T and will not use them for any other purposes, that recipient will not disclose them in any way to any individual or entity, other than recipient's agents or employees engaged in performing the purposes, specified and approved by MW T, and that recipient will immediately return this drawing, any copies of it, and all documents summarizing information from it to MW T upon request Recipient's acceptance of delivery of this drawing constitutes acceptance of these terms



ACCESS DOOR TO PRESS RESOLVER
SLIDE ADJUSTMENT INDICATOR

33.00 LONG DIE BLOCK

CONSOLE TYPE CONTROL ENCLOSURE

AIR MANIFOLD AND LUBRICATION SYSTEM COMPARTMENT (FRONT OF PRESS)

1-5/8 DRILL THRU 4 HOLES
2-1/4 DRILL THRU 4 HOLES

MODEL NO.	SE2-300-84-48 UH PRESS
TITLE	OVERALL - STANDARD
DATE	4-3-91
DRAWN	PAT
CHECKED	
PREP	OF
BUFAFO / NEW YORK / U.S.A.	
CLEARING NIAGARA	0-35392
DRAWING NO.	

NO.	HAS	DATE	NO.	HAS	DATE
4		11-10-97	1		8-10-94
3		1-17-97	2		2-6-95
2		2-6-95	3		1-17-97
1		2-6-95	4		11-10-97

ATTENTION: ANY REVISION TO THIS DRAWING MUST BE MADE ON THE CADAM SYSTEM

FLOOR LINE