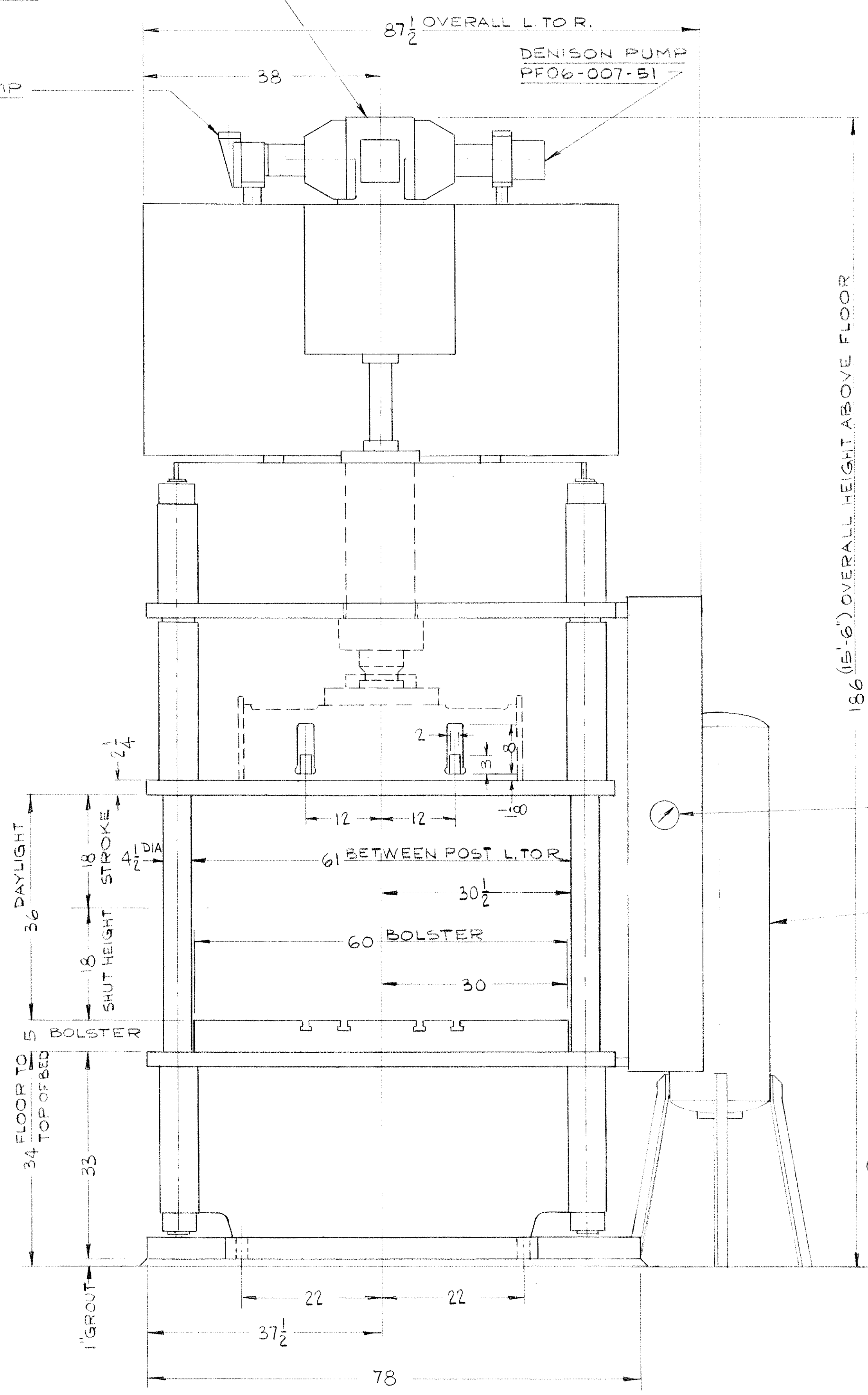


30 HP, 1800 R.P.M.
MOTOR

DENISON PUMP
TID-038-21

87 1/2" OVERALL L. TO R.

DENISON PUMP
PF06-007-51



186 (15'-6") OVERALL HEIGHT ABOVE FLOOR

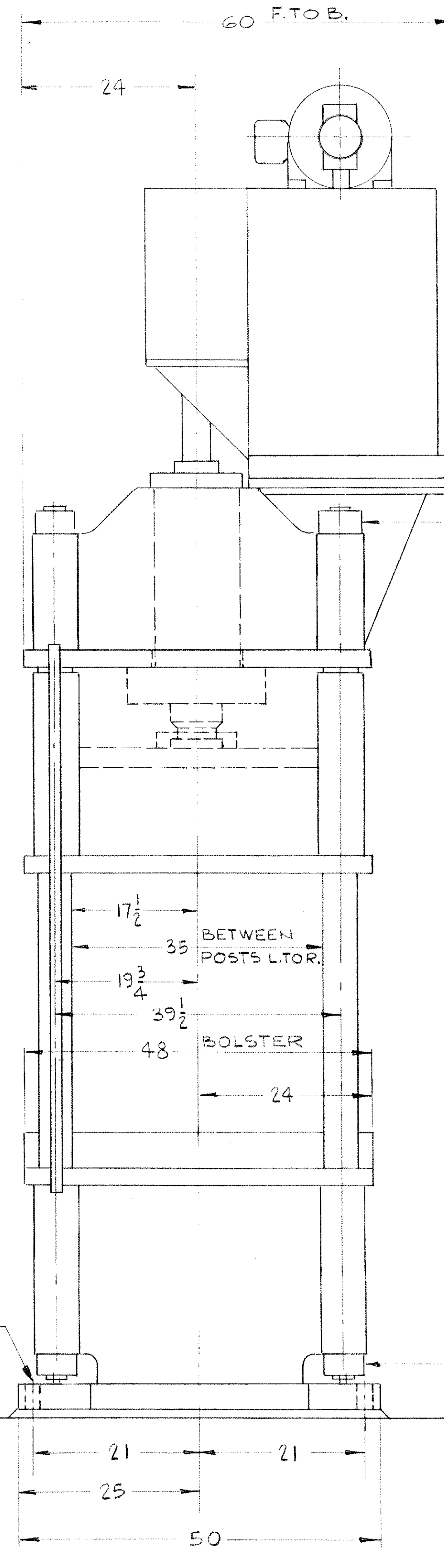
PRESSURE GAUGE

HYDRAULIC PRESSURE TANK

(4) 2" DIA HOLES FOR 1 1/4" DIA FOUNDATION STUDS

FLOOR LINE

60 F. TO B.



SHRINK TIE RODS ON TOP
35° OR 3/32" OF ONE TURN TIGHT

SHRINK TIE RODS ON BOTTOM
50° OR 3/64" OF ONE TURN TIGHT

HDI-150-60-48P HYDR. PRESS

CAPACITY OF PRESS @ 3821 P.S.I.	150 TONS
STROKE OF PLATEN	18 IN.
FAST ADVANCE SPEED	400 IN/MIN
PRESSING SPEED	31 IN/MIN
FAST RETURN SPEED	385 IN/MIN
NET LIFTING CAPACITY @ FAST RETURN	15 TONS
CUSHION CAPACITY @ 1000 P.S.I.	56 TONS
STROKE OF CUSHION	9 IN.
OIL REQ'D FOR PRESS	283 GAL.
OIL REQ'D FOR CUSHION	30 GAL.

BREAK DOWN WEIGHT APPROX.

BED	7718*
PLATEN	5245
CROWN	4018*
BOLSTER	4100*
TIE RODS	1863*
OIL POT ASSEM.	5400*
TOTAL	28,350*

REVISION	80.	21921-4001	SCALE: 1"=1'-0"
DATE			DATE 3-28-69
			DRAWN BY L.T.
			CHECKED BY
			APPROVED

TRADE **Verson** MARK
VERSON ALLSTEEL PRESS CO.
 CHICAGO, ILL.
 HDI-150-60-48P HYDR. PR.
 GENERAL ASSEMBLY