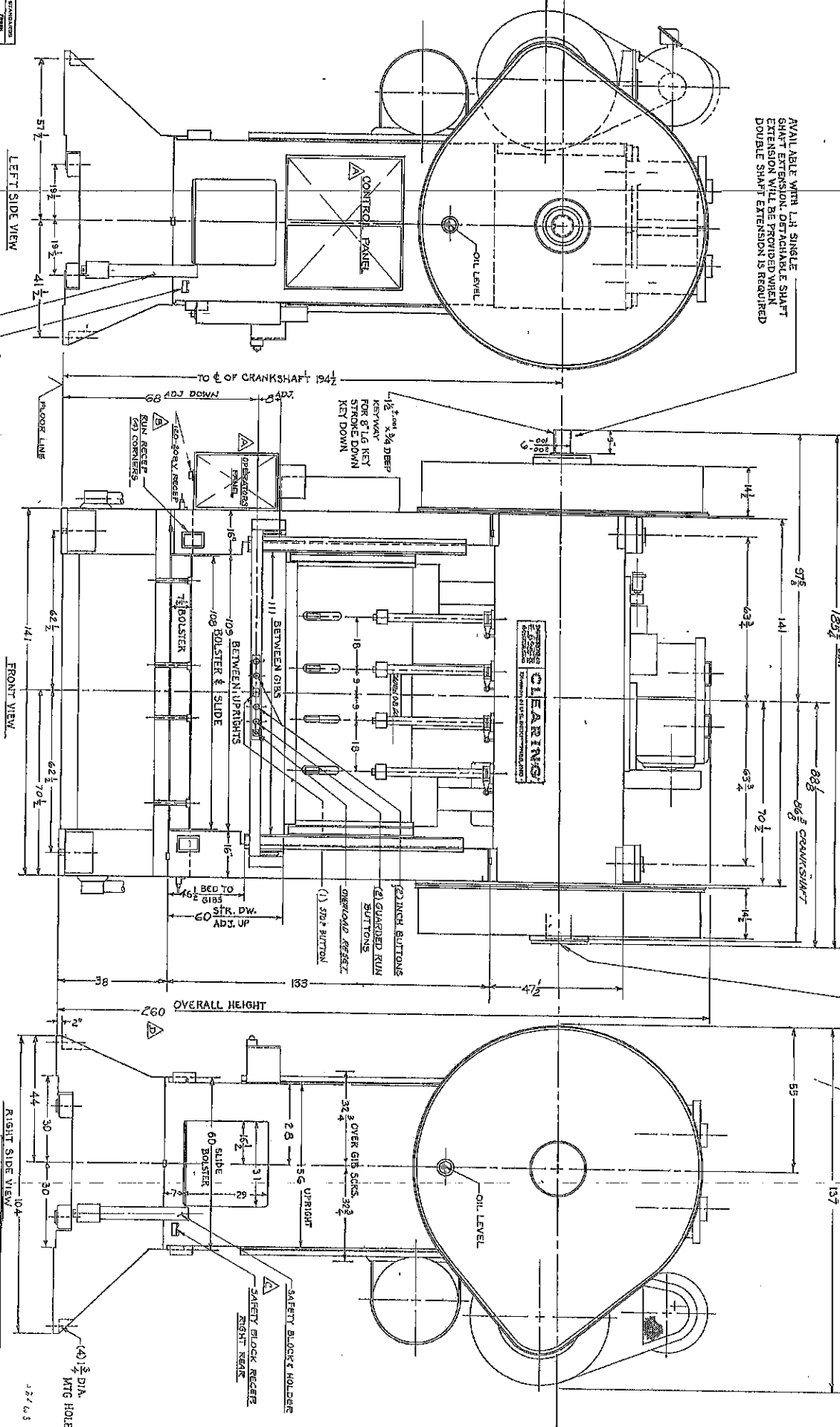


AVAILABLE WITH LH SINGLE SHAFT EXTENSION OR RH DOUBLE SHAFT EXTENSION. DOUBLE SHAFT EXTENSION IS REQUIRED.



ITEM NO.	DESCRIPTION	QUANTITY	UNIT
1	STROKE OF SLIDE (BY MOTOR)	20	INCHES
2	CAPACITY OF COUSHIONS @ 100 PSI	50	STROKES PER MINUTE
3	CAPACITY OF COUSHIONS @ 1200 RPM	50	STROKES PER MINUTE
4	CAPACITY OF COUSHIONS @ 1800 RPM	50	STROKES PER MINUTE

LEFT SIDE VIEW
 SAFETY BLOCK RECEPT LEFT FRONT
 SAFETY BLOCK HOLDER
 TO CENTER OF CRANKSHAFT 194 1/2
 102 DOWN
 104 DOWN RECEPT
 108 DOWN RECEPT
 108 CORNERS
 111 BETWEEN GIBS
 108 BETWEEN UPPER RIBS
 109 ROLLER & SLIDE
 108 BOLSTER
 108 BOLSTER

FRONT VIEW
 141
 62 1/2
 70 1/2
 141
 62 1/2
 70 1/2
 141

PRESS DATA
 CAPACITY OF PRESS 400 TONS @ 2 UP
 STROKE OF SLIDE (BY MOTOR) 20 INCHES
 ADT OF SLIDE (BY MOTOR) 12 INCHES
 STROKES PER MINUTE 50
 CAPACITY OF COUSHIONS @ 100 PSI 50
 CAPACITY OF COUSHIONS @ 1200 RPM 50
 CAPACITY OF COUSHIONS @ 1800 RPM 50
 STROKE LENGTH 50

RIGHT SIDE VIEW

SAFETY BLOCK RECEPT RIGHT REAR
 SAFETY BLOCK HOLDER

60 SLIDE
 60 BOLSTER

16 1/2
 3 1/2
 3
 104
 44
 30
 30
 30

32 1/2 OVER GIB SCISS 20 1/2
 2 3/4
 15 5/8
 2 3/4

UPRIGHT

3 1/2
 2 3/4
 3 1/2
 2 3/4
 3 1/2
 2 3/4
 3 1/2
 2 3/4

44
 30
 30
 30

104
 44
 30
 30
 30

3 1/2 DIA. M16 HOLES

ITEM NO.	DESCRIPTION	QUANTITY	UNIT
1	STROKE OF SLIDE (BY MOTOR)	20	INCHES
2	CAPACITY OF COUSHIONS @ 100 PSI	50	STROKES PER MINUTE
3	CAPACITY OF COUSHIONS @ 1200 RPM	50	STROKES PER MINUTE
4	CAPACITY OF COUSHIONS @ 1800 RPM	50	STROKES PER MINUTE

PROVISIONS FOR DETACHABLE SHAFT EXTENSION

PRESS CLEARING
 DIVISION OF U.S. INDUSTRIES, INC.
 GENERAL SALES BRANCH
 52-400-108-60 PRESS
 32-400-108-60 PRESS