



HP415, HP615

Four Post/Six Post
Mobile Column Lift



**P
A
R
T
S

B
R
E
A
K
D
O
W
N**

IMPORTANT: When ordering parts or requesting service always give exact model and power unit serial number. Model number is shown on nameplate attached to air lock release valve. Power unit serial number is located on side of power unit.

OWNERS RECORD
Complete information
at right and keep in
a safe place.

Date Installed _____

Installed in Bay # _____

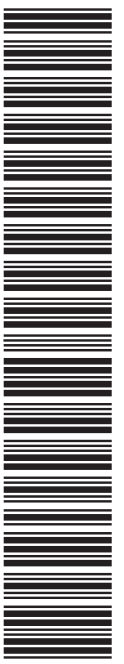
Power Unit Serial # _____

Power Unit Model # _____

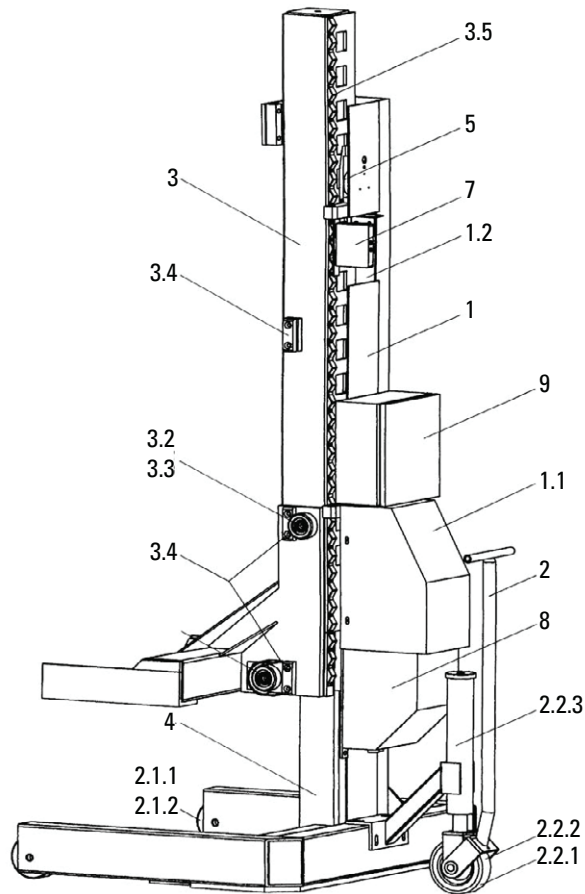
Lift Serial # _____

Lift Model # _____

NOTE: For replacement parts -See your nearest Rotary Parts Distributor.



MECHANICAL COMPONENTS

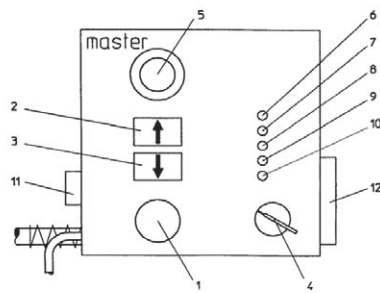


PANZITTA SALES & SERVICE
72 George Avenue
Wilkes-Barre, PA 18705
570-822-6720 800-822-6720
www.panzittasales.com

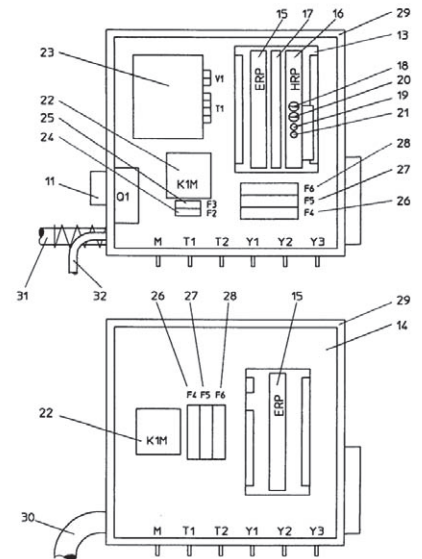
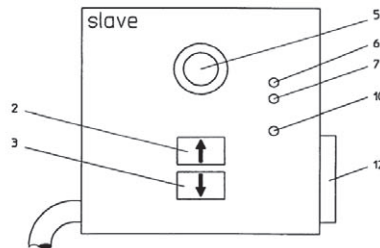
pos.	Description	qty.	Part number
1	Column complete	1	
1.1	Cover for hydraulic driving unit	1	HP13-43
1.2	Cover for roller switches	1	HP13-105
2	Wheel jack complete	1	HP13-106
2.1.1	Front steel wheel D125mm	2	HP13-47
2.1.2	Ball bearing	4	HP13-46
2.2.1	Rubber wheel D200mm	1	HP13-107
2.2.2	Flat spring plate (brake)	1	HP13-108
2.2.3	Spring	1	HP13-45
2.2.4	Axle ball bearing	1	HP13-109
3	Carriage complete	1	Consult factory
3.2	Axle for roller	4	HP13-110
3.3	Roller with slide bearings	4	HP13-111
3.4	Lateral slide bearings	4	HP13-112
3.5	Switch cam	7	HP13-113
4	Hydraulic lifting cylinder	1	See hydraulics
5	Lock latch	1	HP13-114
7	Housing for roller switches	1	HP13-50
8	Hydraulic power unit	1	See hydraulic
9	Electrical control panel	1	See electric

ELECTRIC COMPONENTS

MASTER CONTROL PANEL



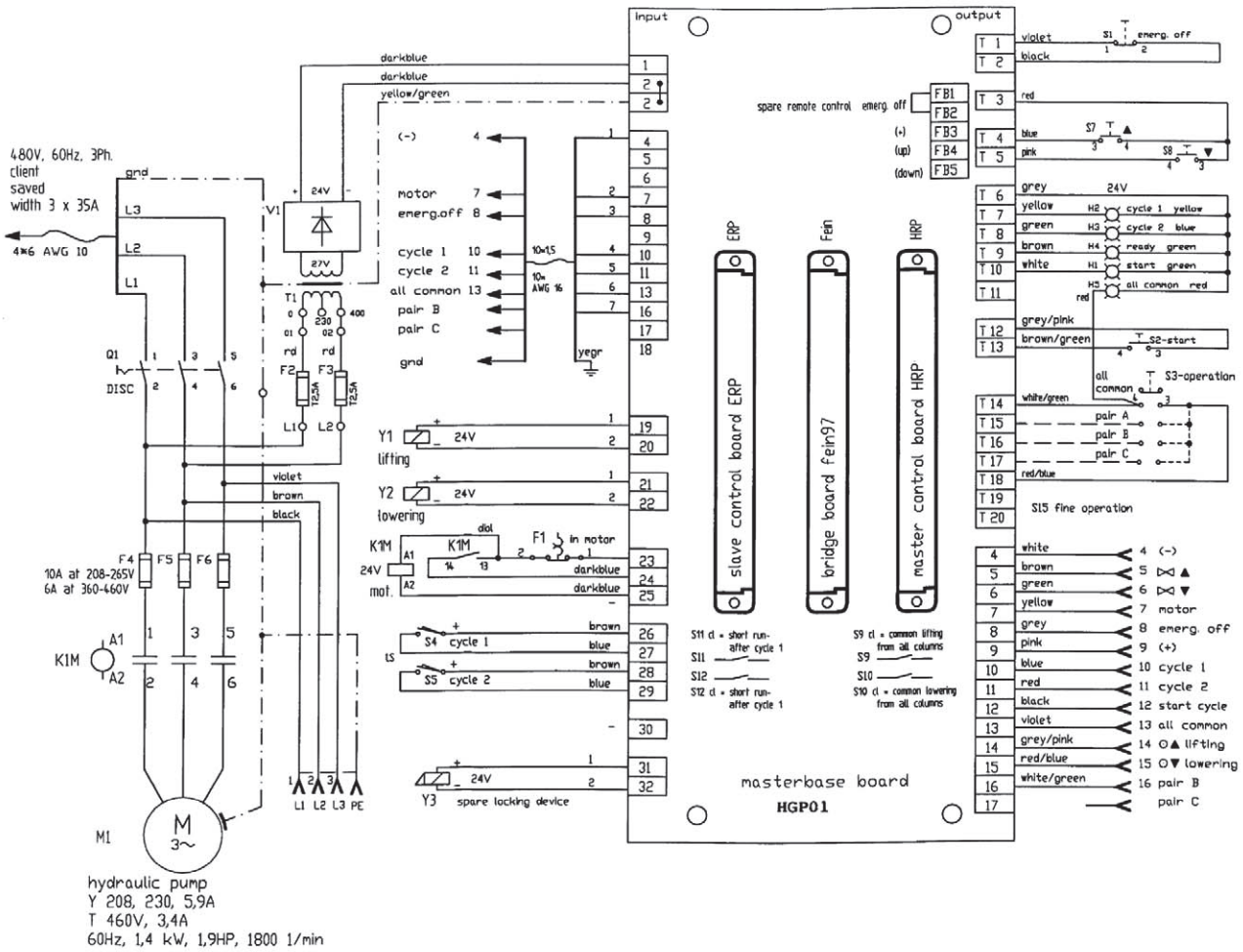
SLAVE CONTROL PANEL



pos.	Description	Part number
1	Push button CONTROL ON, control voltage ON	HP13-79
2	Push button LIFTING	HP13-81
3	Push button LOWERING	HP13-81
4	Selection switch SINGLE / COMMON operation mode	HP13-80
5	EMERGENCY STOP, lockable	HP13-78
6	Control LED lamp YELLOW, synchronism cycle 1	HP13-74
7	Control LED lamp BLUE, synchronism cycle 2	HP13-75
8	Control LED lamp GREEN, COMMON CYCLE	HP13-76
9	Control LED lamp GREEN, CONTROL ON	HP13-73
10	Control LED-lamp RED, on = single, off = common operation	HP13-77
11	Main disconnect switch, lockable	HP13-28
12	Socket housing	HP13-17
13	Master base board HGP01	HP13-68
14	Slave base board EGP99	HP13-85
15	Slave control board ERP96, plugable	HP13-30
16	Master control board HRP99-light, plugable	HP13-69
17	Control bridge board FEIN97BR	HP13-70
18	Fuse F7 on master control board	HP13-56
19	Control LED-lamp (green) on master control board for fuse F7	HP13-73
20	Fuse F8 on master control board	HP13-57

21	Control LED-lamp (yellow) on master control board for fuse F8	HP13-74
22	Motor contactor K1M	HP13-52
23	Transformer T1, 208/230/460 V / 24 V DC	FA7990
24	Fuse F2 for transformer, control currency	HP13-25
25	Fuse F3 for transformer, control currency	HP13-25
26	Fuse F4 for supply current	See wiring
27	Fuse F5 for supply current	See wiring
28	Fuse F6 for supply current	See wiring
29	Control box assm with cables	See wiring
30	Control supply cable – slave column, 15 x 1.5 + 5 x 6 – 33ft with plug 16/3 poles	HP13-61
31	Power supply cable – master column, 4 x AWG10 –50W-50ft, rubber	HP13-83
32	Control cable – master column, 8 x 1 – 33ft with plug 16 poles	HP13-84
M	Cable 4 x 1.5 to electric motor	HP13-120
T1	Cable 3 x 1 to switch S1, cycle 1 (yellow)	HP13-121
T2	Cable 3 x 1 to switch S2, cycle 2 (blue)	HP13-122
Y1	Cable 2 x 1 to solenoid valve lifting	HP13-60
Y2	Cable 2 x 1 to solenoid valve lowering	HP13-60
Y3	Cable 2 x 1 to solenoid of mechanical locking device	HP13-123

MASTER COLUMN WIRING DIAGRAM



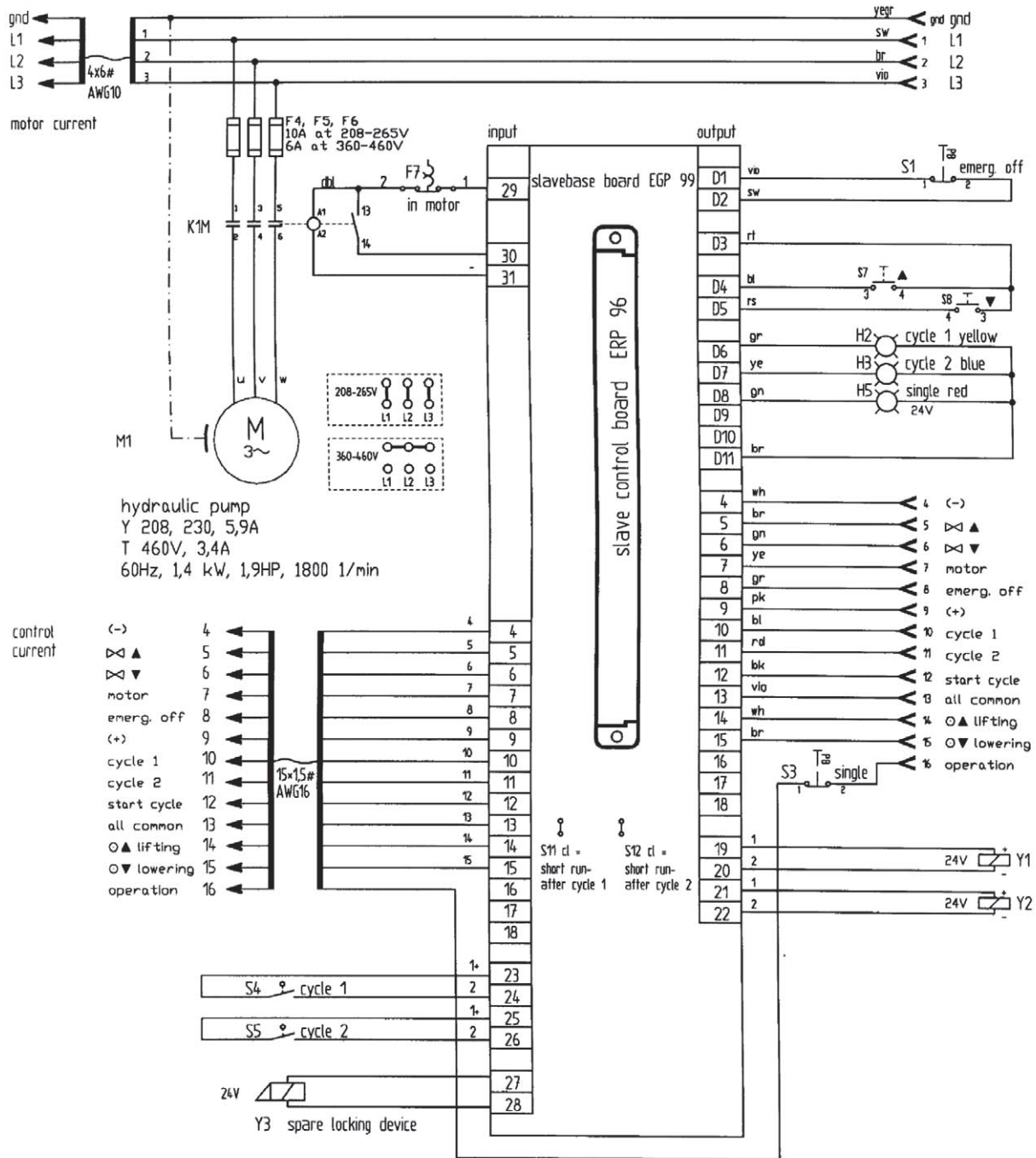
PANZITTA SALES & SERVICE
 72 George Avenue
 Wilkes-Barre, PA 18705
 570-822-6720 800-822-6720
 www.panzittasales.com

pos.	description	part-number
	Master control box assm with cables	HP13-41
HGP01	Master base circuit board	HP13-68
HRP99L	Master control circuit board	HP13-69
ERP96	Slave control circuit board	HP13-30
FEIN97BR	Bridge circuit board	HP13-70
6LED	LED circuit board	HP13-71
F1	Thermal overload switch inside motor	
F2	Fuse transformer control voltage M 2.5 A	HP13-25
F3	Fuse transformer control voltage M 2.5 A	HP13-25
F4, 5, 6	Fuse – supply current, Amps. depending on voltage:	
	208-230V: 10 Amps	HP13-55
	460V: 6.3 Amps	HP13-54
F7	Fuse on master control board M1.6 Amp.	HP13-56
F8	Fuse on master control board M6.3 Amp.	HP13-57
H1	LED lamp CONTROL ON, green	HP13-73
H2	LED lamp cycle 1, yellow	HP13-74
H3	LED lamp cycle 2, blue	HP13-75
H4	LED lamp common cycle, green	HP13-76
H5	LED lamp on=single, off=common operation, red, blink.	HP13-77
K1M	Motor contactor	HP13-52
LED1	Solenoid voltage o.k. (green), on master control board	HP13-73
LED2	Control voltage o.k. (yellow), on master control board	HP13-74
Q1	Main disconnect switch, lockable	HP13-28
S1	Emergency-stop, lockable	HP13-78
S2	Start, CONTROL ON	HP13-79
S3	Selection switch single / all	HP13-80
S4	Limit roller switch with cable – cycle 1	HP13-10
S5	Limit roller switch with cable – cycle 2	HP13-10
S7/S8	Push button Lifting/Lowering	HP13-81
T1	Transformer 208/230/460V / 24V	FA7990
V1	rectifier 24VDC	HP13-82
Y1	Solenoid valve Lifting , 24 V	See hydraulic
Y2	Solenoid valve Lowering, 24 V	See hydraulic
Y3	Solenoid for mechanical lock, 24 V	HP13-9
M	Motor 208/230/460V/3Ph/60Hz/ 1.9HP/1800rpm (included thermal overload switch)	
HP13-40		

	Plug housing	HP13-14
	Plug inset 16-poles	HP13-15
	Plug inset 3-poles	HP13-16
	Socket housing, with locking device	HP13-17
	Socket inset 16-poles	HP13-18
	Socket inset 3-poles	HP13-19
	Small strain relief at box	HP13-116
	Small strain relief at hood	HP13-116
	Power cord strain relief at box	HP13-117
	Adapter strain relief (PG29-PG36)	HP13-119
	Large strain relief at box slave column (PG36)	HP13-118
	Small cable reducer (PG29-PG13.5)	HP13-128
	Cable thread adapter for box	HP13-129

PANZITTA SALES & SERVICE
72 George Avenue
Wilkes-Barre, PA 18705
570-822-6720 800-822-6720
www.panzittasales.com

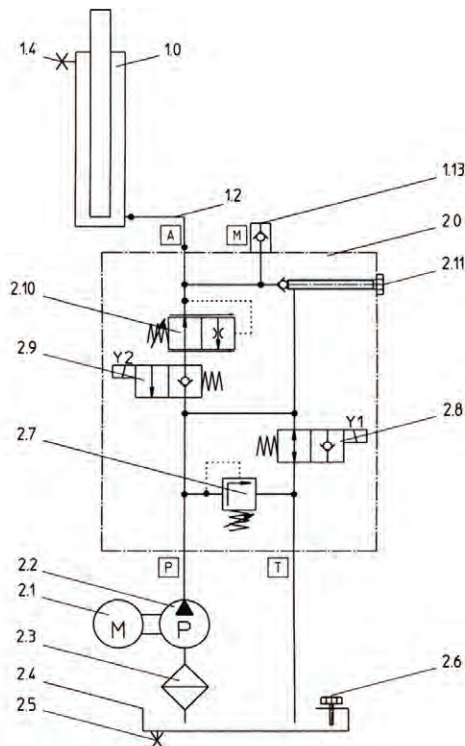
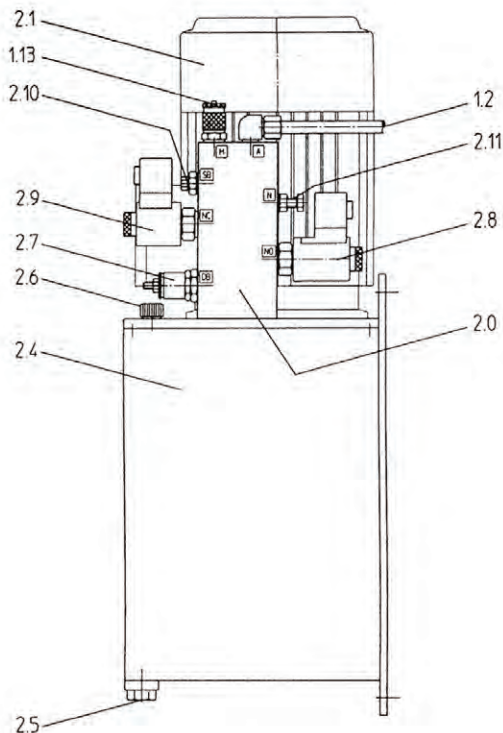
SLAVE COLUMN WIRING DIAGRAM



PANZITTA SALES & SERVICE
 72 George Avenue
 Wilkes-Barre, PA 18705
 570-822-6720 800-822-6720
 www.panzittasales.com

	Slave control box assm with cables	HP13-42
EGP99	Slave base circuit board	HP13-85
ERP96	Slave control circuit board	HP13-30
6LED00	LED-circuit board	HP13-86
F4, 5, 6	Fuse – supply current, Amps. depending on voltage:	
	208-230V: 10 Amps	HP13-55
	460V: 6.3 Amps	HP13-54
F1	Thermal overload relays inside motor	
H2	LED lamp cycle 1, yellow	HP13-74
H3	LED lamp cycle 2, blue	HP13-75
H5	LED lamp, on=single, off=common operation, red, blink.	HP13-77
K1M	Motor contactor	HP13-52
S1	Emergency stop	HP13-78
S4	Limit roller switch with cable – cycle 1	HP13-10
S5	Limit roller switch with cable – cycle 2	HP13-10
S7/S8	Push button Lifting/Lowering	HP13-81
Y1	Solenoid valve Lifting, 24 V	See hydraulic
Y2	Solenoid valve Lowering, 24 V	See hydraulic
Y3	Solenoid for mechanical lock, 24 V	HP13-9
M	Motor 208/230/460V/3Ph/60Hz	
	included thermal overload switch	HP13-40
	Plug housing	HP13-14
	Plug inset 16-poles	HP13-15
	Plug inset 3-poles	HP13-16
	Socket housing, with locking device	HP13-17
	Socket inset 16-poles	HP13-18
	Socket inset 3-poles	HP13-19
	Large strain relief at box	HP13-118
	Large strain relief at hood	HP13-118
	Adaptor, Strain relief	HP13-119

HYDRAULIC CIRCUIT DIAGRAM



pos.	description	part-number
1.0	Lifting cylinder, pin retained	HP13-48
	Lifting cylinder, cup retained	HP13-66
1.2	Hydraulic tubing	HP13-87
1.4	Bleeding screw of lifting cylinder	HP13-88
2.0	Valve housing	HP13-89
2.0	Motor 208/230/460V/3Ph/60Hz	See electric
2.2	Gear pump	HP13-90
2.2.1	Clutch for gear pump	HP13-91
2.2.2	Clutch motor	HP13-92
2.2.3	Dog clutch	HP13-93
2.3	Oil filter	HP13-94
2.4.1	Oil tank	HP13-95
2.4.2	Cover for oil tank	HP13-96
2.4.3	Cork seal	HP13-97
2.5	Oil drain screw	HP13-98
2.6	Dip stick	HP13-99
2.7	Pressure relief valve, 240 bar	HP13-100
2.8	2/2-way-solenoid valve 24 V = NO lifting valve	HP13-59
2.9	2/2-way-solenoid valve 24 V = NC lowering valve	HP13-58

2.10	Regulation valve SB05H for lowering	HP13-101
2.11	Emergency lowering screw M8 x 30	HP13-102
2.11.1	Lock nut M10 at emergency lowering screw	HP13-103
2.11.2	Ball D 6.5 mm	HP13-104
2.13	Test connection	HP13-115

PANZITTA SALES & SERVICE
72 George Avenue
Wilkes-Barre, PA 18705
570-822-6720 800-822-6720
www.panzittasales.com



A DOVER COMPANY

