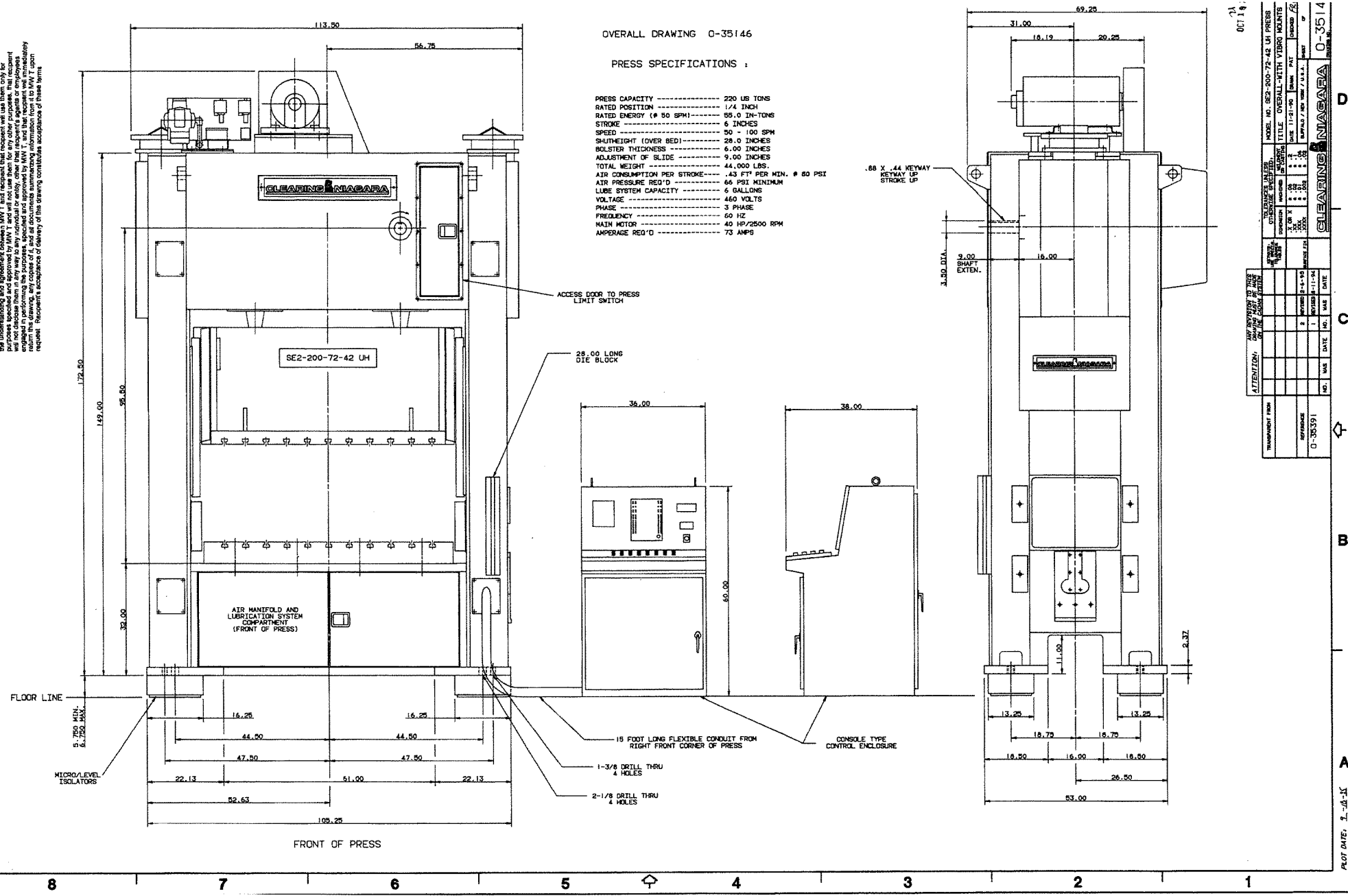


CONFIDENTIAL & PROPRIETARY INFORMATION. This drawing and the information it contains are the property of Miller Waukegan Technology Group & Co. (MW T) and are being provided upon the understanding that they are for the use of the recipient only. The recipient shall not disclose them in any way to any individual or entity, other than recipient's agents or employees, without the prior written consent of MW T. The recipient shall not copy, reproduce, modify, or otherwise use this drawing, any portion of it, and all documents containing information from it, MW T, upon request. Recipient's acceptance of delivery of the drawing constitutes acceptance of these terms.

OVERALL DRAWING 0-35146

PRESS SPECIFICATIONS :

- PRESS CAPACITY ----- 220 US TONS
- RATED POSITION ----- 1/4 INCH
- RATED ENERGY (# 50 SPM) ----- 55.0 IN-TONS
- STROKE ----- 6 INCHES
- SPEED ----- 50 - 100 SPM
- SHUTHEIGHT (OVER BED) ----- 28.0 INCHES
- BOLSTER THICKNESS ----- 6.00 INCHES
- ADJUSTMENT OF SLIDE ----- 9.00 INCHES
- TOTAL WEIGHT ----- 44,000 LBS.
- AIR CONSUMPTION PER STROKE ----- 43 FT³ PER MIN. @ 60 PSI
- AIR PRESSURE REQ'D ----- 66 PSI MINIMUM
- LUBE SYSTEM CAPACITY ----- 6 GALLONS
- VOLTAGE ----- 480 VOLTS
- PHASE ----- 3 PHASE
- FREQUENCY ----- 60 HZ
- MAIN MOTOR ----- 40 HP/2500 RPM
- AMPERAGE REQ'D ----- 73 AMPS



ATTENTION: ANY CHANGES TO THIS DRAWING MUST BE APPROVED BY THE DESIGN ENGINEER

NO.	DATE	BY	CHKD.	DATE	BY	CHKD.
1	11-11-94
2	05-15-95
3	08-11-95

TRANSPORT FROM: REFERENCE: 0-35391

NO.	DATE	BY	CHKD.	DATE	BY	CHKD.
1	11-11-94
2	05-15-95
3	08-11-95

MODEL NO. SE2-200-72-42 UM PRESS
 TITLE: OVERALL-WITH VIBRO MOUNTS
 DATE: 11-21-94
 DRAWN: PAT
 CHECKED: SE
 APPROVAL / REV: / U.S.A. / MINT

CLEARING NIAGARA 0-35146