



AMERICAN AUCTIONEERS
— GROUP —

1146 N Central Avenue #535
Glendale, California 91202

Phone:

818-763-2021

WWW.AAGAUCATION.COM

PUBLIC AUCTION

AUCTION DATE:
TUESDAY JUNE 9, 2026
STARTING @ 10:30 AM. (PST)

AUCTION LOCATION:
1937 S. SANTA FE AVENUE. LOS ANGELES, CA

AEROSPACE MACHINE TOOLS AND FLUID FORMING PRISTINE MACHINE TOOLS

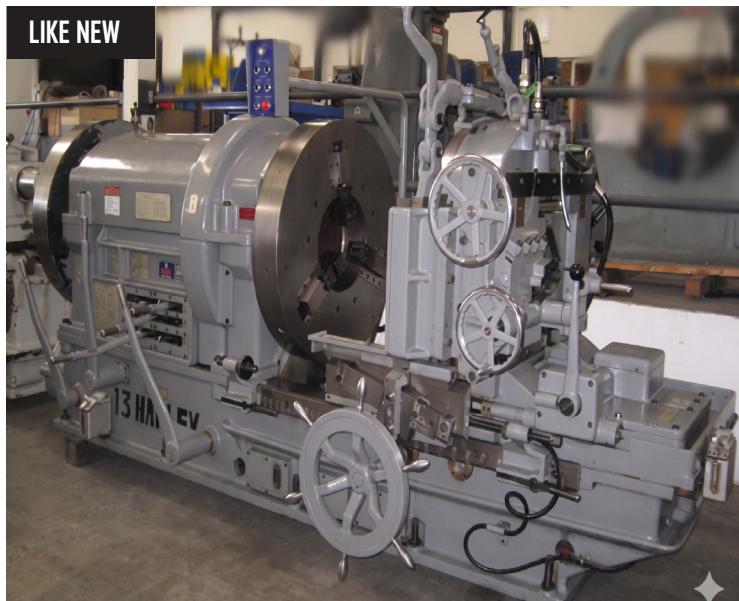


Farnham Model 1510-E, 15 Ft Capacity Forming Rolls, 1.625" Top and Bottom Rolls, s/n 3-43-11.

Inspection :Monday June 8th from 9:00am to 3:00pm.
"Live Webcast Online Only – No Onsite Bidding".
"Bidding thru Bidspotter.com".

PRESORTED
Standard Mail
U.S. Postage
PAID
STA CLARITA, CA
Permit No. 298

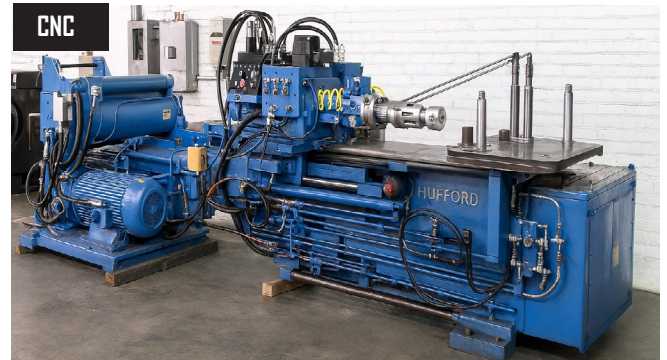
"FIRST CLASS" AEROSPACE & AERONATICS MACHINE TOOLS



Harley Model HP 763 Receding Die Head 8 1/5" thru 13 1/5" Capacity Pipe Threader & Cutting Machine, w/ Revolving Chuck, 8" Thread Length, 4.6 thru 13.1 RPM Spindle Speed s/n 3046



Versom Wheelon Model 8600R-36-92 Direct-Acting Hydraulic Forming Press, 8600 Ton Capacity, 5000 psi Forming Pressure, 36" x 92" Tray Size.



L & F Hufford Model A-5 CNC Stretch Wrap Forming Machine, 12 Tons, 115" Distance Between Jaws, 20" Tension Cylinder Stroke, 30" Tension Cylinder Swing, w/ DeMott CNC Controls and Remote Hand Controls.

FLUID FORMING & STRETCH FORMING

LOCATED AT MANSFIELD, OH

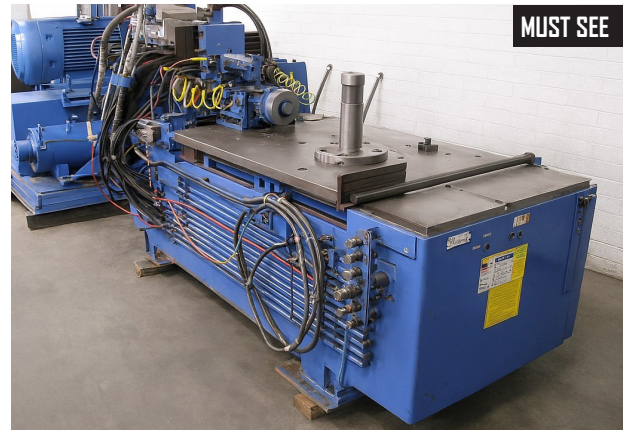


Versom Wheelon Model 8600R-36-92 Direct-Acting Hydraulic Forming Press, 8600 Ton Capacity, 5000 psi Forming Pressure, 36" x 92" Tray Size.

CNC



MUST SEE



L & F Hufford Model A-5 CNC Stretch Wrap Forming Machine, 12 Tons, 115" Distance Between Jaws, 20" Tension Cylinder Stroke, 30" Tension Cylinder Swing, w/ DeMott CNC Controls and Remote Hand Controls.

LOCATED AT MANSFIELD, OH



Hufford Model A-10 Stretch Wrap Forming Press, 17.5 Ton Forming, 219" Distance Between Jaws, Hydraulic Clamping, Simultaneous Arm Motion Swing, s/n BHW-P-361.

AEROSPACE FORMING AND ROLLING



1 of 2
Farnham Model 1510-E, 15 Ft Capacity Forming Rolls, 1.625" Top and Bottom Rolls, s/n 3-43-11.



MUST SEE
Farham Model 1558-E and 1510-E Forming Rolls w/ 15 FT Capacity Rolls.



11 TON
NAS Division 11 Ton Stretch Wrap Forming Press w/ 136" Max Length of Tension Cylinders fully retracted, Equipped w/ 1 set of 3" jaws and Gripper jaws.



MUST SEE
Marchant Model 4 Hydraulic Shrinker Stretcher Machine, w/ 2 Sets of Stretcher Jaws and Assembly, 7.5 hp.



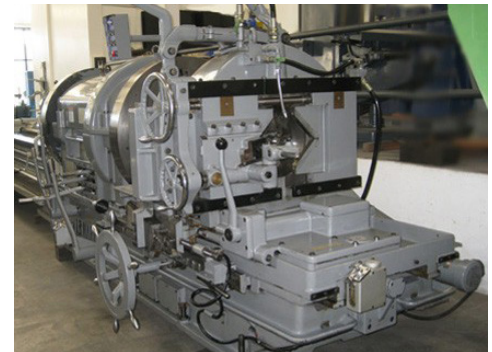
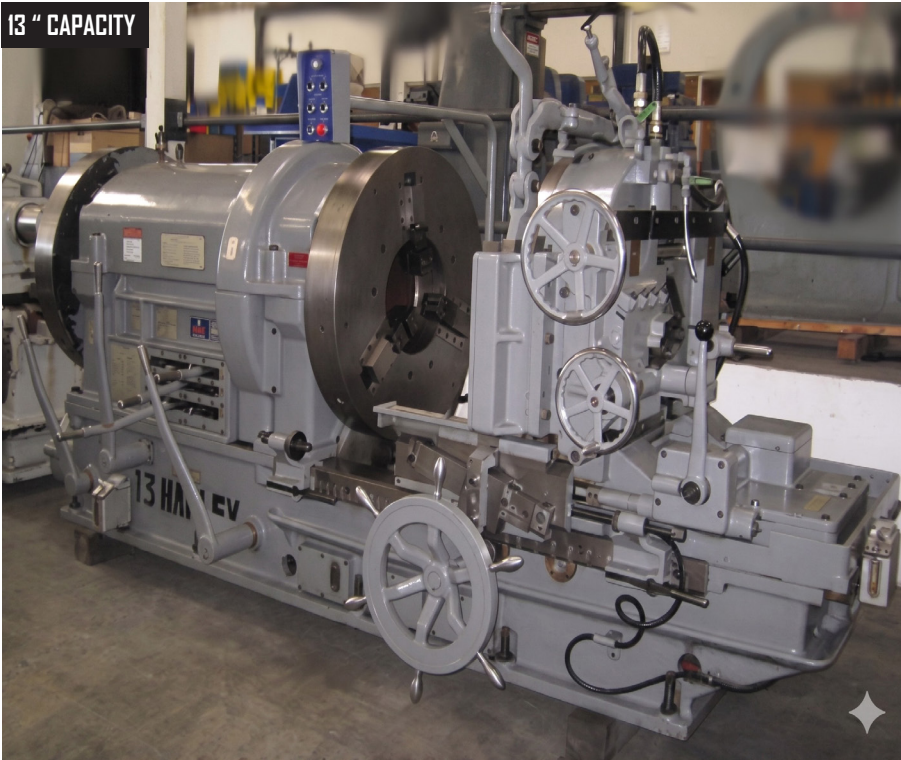
6' CAP
Roper Whitney Jensen Model 616 Leaf Hand Brake, 6 Ft x 16 Gauge Capacity.



48" CAP
Chicago Model L31 Box and Pan Hand Brake, 48" x 14 Gauge Capacity.

PIPE THREADING AND SANDING

13" CAPACITY



Harley Model HP 763 Receding Die Head 8 1/5" thru 13 1/5" Capacity Pipe Threader & Cutting Machine, w/ Revolving Chuck, 8" Thread Length, 4.6 thru 13.1 RPM Spindle Speed s/n 3046

FEATURING

Boyar Schultz Model 2A 6" x 12" Hydraulic Surface Grinder w/ Permanent Magnetic Chuck.
 Miller Syncrowave 351 Tig Welder.
 Miller Deltaweld 452 Mig Welder.
 Poloni 16" Tilting Arbor Table Panel Saw w/ Holzher 1112 Power Feeder.
 Feeler Precision Tool Room Lathe w/ Inch and English Metric Threading, tooled with 5C Collets, DRO, 3 Jaw Chucks.
 Victor Model 518EM Tool Room Lathe w/ English Metric Tool Room Lathe, 11" x 18" Capacity, DRO and 5C Collets, s/n 21093.
 Graziano-SAG 12.5" x 40" Engine Lathe, English-Metric, 3 and 4 Jaw Chuck, 7-2000 RPM.
 Mitutoyo Crysta-Plus M7106 CMM, model 196-487, s/n BH000042.
 Rotex Model 18AK, 8 Ton Turret Punch, s/n 14119
 2004 Soco HVS-375-FA-DR Programmable Automatic Cold Saw, 14.76" Blade, 4.5" Bar Capacity.
 2000 Soco Model MC275AC 12" Semi Auto Mitre Cold Saw, 4" Round Capacity.
 Pehaka 40" Vertical Band Saw, Model USF10R.
 Do All Model 3612-3, 36" Vertical Band Saw, 3 Speed Gear Box, Power Feed Table, 25-6000 RPM.
 Do All Model 2013-20, 20" Vertical Band Saw w/ Welder.
 Clausing-Kalamazoo Model MS1318SA Mitering Semi-Automatic Swivel Horizontal Band Saw.
 S.F. Bowser & Co Portable Wheeled Self Measuring Oil & Dispensing Pump Cart and Antique Shoeshine Machine.
 Rotex and Di Acro Turret Punch.
 Cushman All Steel 3 Jaw 9.5" and 4 Jaw 10.5" Spindle Hole Chucks.
 Kitagawa 17.5" 4 Jaw Chuck w/ 4" Hole.
) Ingersoll Bolt on Boring Mill Turret Lathe 10.5" x 12.5" Jaws.

30" DISC



Max 30" Combination Disc 30DVS and Spindle Sander VS-1, 15" F-B Working Surface x 38.5" L-R For Disc Sander and 24" x 24" Spindle Sander Table.

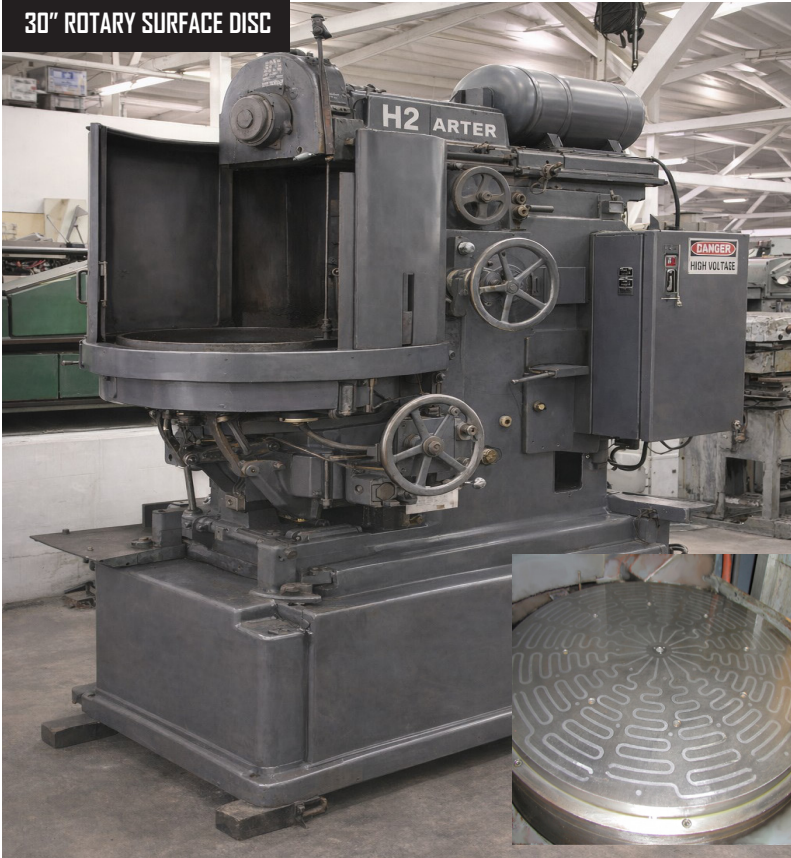
36" CAP



Burlington Rand Model S36X75R, 36" Abrasive Belt Grinder.

PRECISION GRINDING & WELDING

30" ROTARY SURFACE DISC



Arter Sunstrand B-30, 30" Rotary Surface Grinder, w/ 40" Swing Inside Water Pan, 33" DPWN, 10 HP Stone Drive, Angular Adjustment Convex and Concave at 10 Degrees.

13,500 LB CAPACITY



Hyster S135XL 13,500 Lb Capacity LPG Forklift, 3200 hours, Equipped w/ Side Shift, 2 Sets of Forks (6 Ft and 4 Ft).

MUST SEE



Boyar Schultz Model 2A 6" x 12" Hydraulic Surface Grinder w/ Permanent Magnetic Chuck

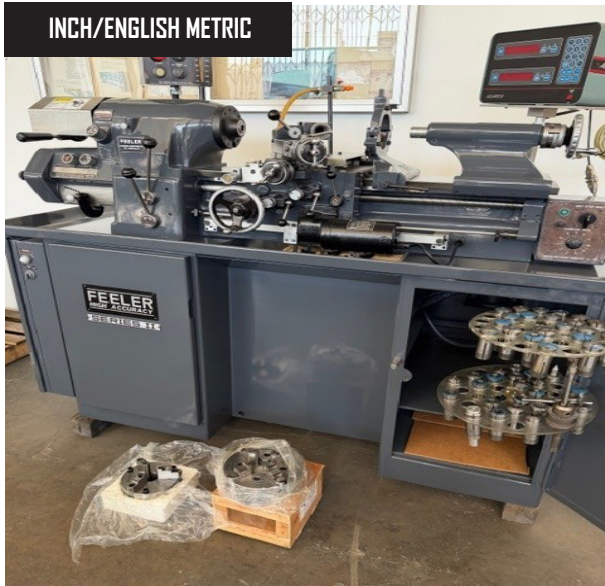


Miller Syncrowave 351 Tig Welder.



Miller Deltaweld 452 Mig Welder.

PRECISION MACHINE TOOLS & SUPPORT



Feeler Precision Tool Room Lathe w/ Inch and English Metric Threading, tooled with 5C Collets, DRO, 3 Jaw Chucks.



Victor Model 518EM Tool Room Lathe w/ English Metric Tool Room Lathe, 11" x 18" Capacity, DRO and 5C Collets, s/n 21093.



Graziano-SAG 12.5" x 40" Engine Lathe, English-Metric, 3 and 4 Jaw Chuck, 7-2000 RPM.



Mitutoyo Crysta-Plus M7106 CMM, model 196-487, s/n BH000042.



Rotex Model 18AK, 8 Ton Turret Punch, s/n 14119



Sullair 50 hp Rotary Screw Air Compressor with Dryer

METAL CUTTING AND SAWING



AUTO
2004 Soco HVS-375-FA-DR Programmable Automatic Cold Saw, 14.76" Blade, 4.5" Bar Capacity.



MUST SEE
2000 Soco Model MC275AC 12" Semi Auto Mitre Cold Saw, 4" Round Capacity.



40" CAP
Pehaka 40" Vertical and Saw, Model USF10R.



36" CAP
Do All Model 3612-3, 36" Vertical Band Saw, 3 Speed Gear Box, Power Feed Table, 25-6000 RPM.



20" CAP
Do All Model 2013-20, 20" Vertical Band Saw w/ Welder.



MUST SEE
Clausing-Kalamazoo Model MS1318SA Mitering Semi Automatic Swivel Horizontal Band Saw.



Poloni 16" Tilting Arbor Table Panel Saw w/ Holzher 1112 Power Feeder.



PUBLIC AUCTION



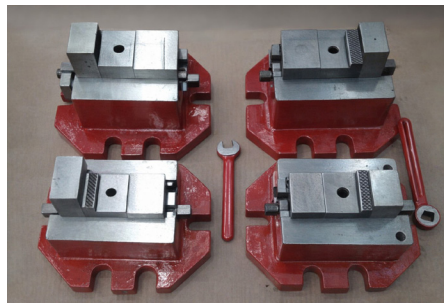
ANTIQUE
S.F. Bowser & Co Portable Wheeled Self Measuring Oil & Dispensing Pump Cart and Antique Shoeshine Machine.



MUST SEE
Rotex and Di Acro Turret Punch




Cushman All Steel 3 Jaw 9.5" and 4 Jaw 10.5" Spindle Hole Chucks.



Ingersoll Bolt on Boring Mill Turret Lathe 10.5" x 12.5" Jaws.



Kitagawa 17.5" 4 Jaw Chuck w/ 4" Hole.

	<p align="center">BID ON BIDSPOTTER.COM</p>	<p><small>TERMS OF SALE: CASH OR CASHIER'S CHECK ONLY. 18% BUYER'S PREMIUM ON ALL PURCHASES \$2000 OR REFUNDABLE CASH DEPOSIT. 25% CASH DEPOSIT TOWARDS ALL PURCHASES. ALL SALES ARE SUBJECT TO CALIFORNIA SALES TAX. THERE WILL BE NO EXCEPTIONS.</small></p>	<p align="center">BID LIVE OR VIA WEBCAST</p> <p align="center"></p>	<p align="center"><small>TERMS AND CONDITIONS ALL ITEMS ARE SOLD AS-IS / WHERE - IS NO GUARANTEES, OR WARRANTIES ARE APPLIED ALL ITEMS MUST BE PICKED UP BY SPECIFIED DATE</small></p>	
---	--	--	--	--	---


PARTIAL & ABBREVIATED TERMS AND CONDITIONS OF AUCTION

ALL TERMS AND CONDITIONS BEHIND THE BIDDERS CARD SUPPLIED WILL APPLY TO ALL AUCTION SALE ITEMS AND FOR ALL PRIVATE NEGOTIATIONS. BY PARTICIPATING AND BIDDING AT AUCTION YOU ARE LEGALLY BINDING A CONTRACT WITH THE AUCTION COMPANY.

ALL INVOICES MUST BE PAID WITHIN 24 HOURS FROM AUCTION DATE. IT IS PROHIBITED TO BID ON ANY ITEM THAT CANNOT BE PAID IN FULL WITHIN 24 HOURS FROM AUCTION DATE. PAYMENTS MUST BE CASHIER'S CHECK, WIRE TRANSFER, OR LETTER OF GUARANTEE FROM BANK.
ALL ITEMS MUST BE REMOVED BY JUNE 19, 2026 3:00 PM (PST)
NO LOADING OR PICK UP ON SATURDAY AND SUNDAY.
NO LOADING BY AUCTIONEER OR SELLER.
BUYER'S PREMIUM 18% FOR ALL ONLINE BIDDING ON BIDSPOTTER.COM.
AUCTIONEER IS NOT RESPONSIBLE FOR MIS IDENTIFICATION OF ANY EQUIPMENT OR ASSETS BEING SOLD AT AUCTION EITHER BY VERBAL OR WRITTEN. IT IS THE BUYER'S RESPONSIBILITY TO INSPECT THE GOODS AND ASCERTAIN IF THE SPECIFICATIONS, DESCRIPTIONS AND CONDITION OF THE GOODS CONFORM TO THE BUYER'S REQUIREMENT INCLUDING SERIAL NUMBERS.

BUYER ACKNOWLEDGES THAT THE EQUIPMENT OR ITEMS PURCHASED ONCE MAY HAVE CONTAINED, EXPOSED TO, AND OR UTILIZED HAZARDOUS MATERIAL. THERE MAY BE SURFACES ON ITEMS WHERE DECONTAMINATION CANNOT BE VALIDATED: AS SUCH, THE BUYER OR BIDDER ACKNOWLEDGING THAT THEY ARE ACCEPTING THIS EQUIPMENT OR ITEMS IN AN "AS IS" CONDITION.

BUYER AND THEIR ASSOCIATES WILL HOLD AUCTIONEER AND "THE SELLER" HARMLESS AGAINST ANY AND ALL CLAIMS AND ACTIONS ARISING OUT OF THE PARTICIPATION OF THE INDEMNITEE IN THE ACTIVITY, INCLUDING, WITHOUT LIMITATION, EXPENSES, JUDGEMENTS, FINES, SETTLEMENTS AND OTHER AMOUNTS INCURRED IN CONNECTION WITH ANY LIABILITY, SUIT, ACTION, LOSS, OR DAMAGE ARISING OR RESULTING FROM THE INDEMNITEE'S PARTICIPATION IN THE AUCTION. ALL BIDDERS MUST ONLY USE APPROVED MACHINERY MOVERS BY SELLER WITH LIABILITY INSURANCE OF \$2,000,000 OR HIGHER. NO ITEMS SHALL BE REMOVED UNLESS PAID IN FULL AND ALL ITEMS SHALL BE REMOVED IN THE TIME ALLOCATED BY THE AUCTIONEER.
ALL SALES ARE FINAL, AND ALL ITEMS ARE SOLD AS IS WHERE IS, WITH ALL FAULTS AND DEFECTS.
THERE ARE NO GUARANTEE OR WARRANTY TO ANY ITEMS SOLD (RE: MAKE, MODEL, YEAR, HOURS, MILES, OR MERCHANTABILITY BY AUCTIONEER OR SELLER).
BUYER'S RESPONSIBILITY TO INSURE PROPER USE FOR SAFETY.
ALL ITEMS ARE SOLD AS "PARTS ONLY"
BUYER ACKNOWLEDGES THAT THE GOODS ARE PRE-OWNED AND GOODS WERE NEITHER DESIGNED NOR MANUFACTURED BY SELLER. SELLER HAS NO KNOWLEDGE OF OR CONTROL OVER THE PRIOR USE OR MISUSE OF THE GOODS OR ANY MODIFICATIONS TO THE GOODS FOLLOWING ORIGINAL MANUFACTURE. NEITHER DOES SELLER HAVE KNOWLEDGE OR CONTROL OVER THE APPLICATION OF THE GOODS BY BUYER. IT IS THE BUYER'S SOLE RESPONSIBILITY TO PROVIDE PROPER SAFETY DEVICES, EQUIPMENT AND INSTRUCTIONS FOR ANY PARTICULAR USE OR TAKE NECESSARY STEPS TO CONFORM THE GOODS AND OPERATION THEREOF TO ALL FEDERAL, STATE OR LOCAL GOVERNMENT SAFETY STANDARDS AND LAWS INCLUDING WITHOUT LIMITATION THE OCCUPATIONAL SAFETY AND HEALTH ACT OF "OSHA". ANNOUNCEMENTS MADE BY THE AUCTIONEER ON THE DAY OF THE AUCTION TAKE PRECEDENCE OVER ANY PREVIOUS PRINTED MATERIAL PERTAINING TO THIS AUCTION. AUCTIONEER RESERVES THE RIGHT TO REMOVE OR ADD TO ANY AUCTION ITEMS ON THE LIST UNTIL AUCTION TIME.

	<p>LIVE WEBCAST ONLINE ONLY NO ONSITE BIDDING</p> <p>JUNE 9, 2026 ~ AUCTION</p>	
--	---	---