



AMERICAN AUCTIONEERS
— GROUP —
1146 N Central Avenue #535
Glendale, California 91202
Phone:
818-763-2021
WWW.AAGAUCION.COM

“2 DAY “ PUBLIC AUCTION

AUCTION DATE:
WEDNESDAY JUNE 3, 2026 & THURSDAY JUNE 4, 2026
STARTING BOTH DAYS @ 10:00 AM. (MST)

AUCTION LOCATION:
2140 W. PINNACLE PEAK ROAD. PHOENIX, AZ

“IMMACULATE & FIRST CLASS” AMADA SHEET METAL FAB & POWDER COATING FACILITY

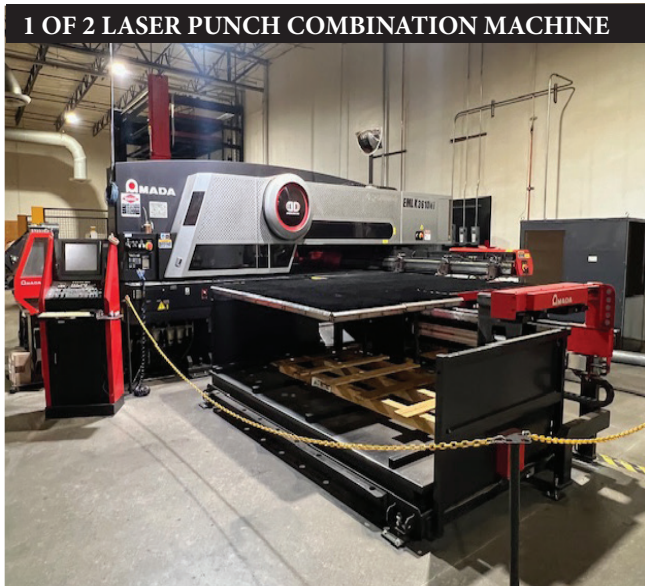


200,000 SQ/FT MFG Facility

Inspection: Monday, June 1, 2026, and Tuesday, June 2, 2026
from 9:00 am to 3:00 pm.
“Live Webcast Online Only – No Onsite Bidding”.
“Bidding thru Bidspotter.com”.

PRESORTED
Standard Mail
U.S. Postage
PAID
STA CLARITA, CA
Permit No. 298

“2 DAY SALE” MULTI-MILLION \$\$ FABRICATION FACILITY



2011 Amada EMLK 3610 NT CNC Hybrid Servo-Electric Laser/Punch Combination Machine, 33 Ton Capacity, 4.0 KW Laser, 58 Station Thick Turret, 4 Auto Index, 60” x 100 Laser Cutting and 60” x 120” Punching Sheet Size, Brush Table, Amada AMNC PC Controls, and Amada AASR 510M Automation Tower, s/n 43612064.



Amada Series HDS 8025NT and HDS 1303NT CNC Hydraulic Press Brakes.

200,000 SQ/FT FACILITY

AMADA CNC STAMPING/LASER CUTTING

1 OF 2 LASER PUNCH COMBINATION MACHINE

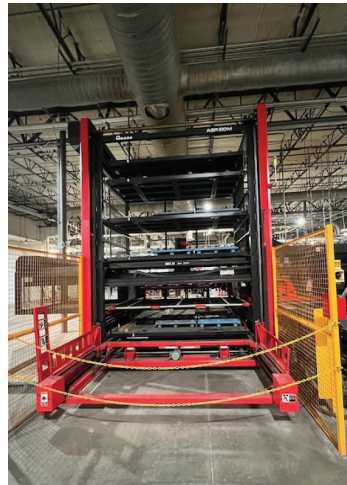


4000 KW LASER ELECTRIC



2011 Amada EMLK 3610 NT CNC Hybrid Servo-Electric Laser/Punch Combination Machine, 33 Ton Capacity, 4.0 KW Laser, 58 Station Thick Turret, 4 Auto Index, 60" x 100 Laser Cutting and 60" x 120" Punching Sheet Size, Brush Table, Amada AMNC PC Controls, and Amada AASR 510M Automation Tower, s/n 43612064.

SERVO-ELECTRIC LASER/PUNCH



2008 Amada EMLK 3610 NT CNC Hybrid Servo-Electric Laser/Punch Combination Machine, 33 Ton Capacity, 4.0 KW Laser, 58 Station Thick Turret, 4 Auto Index, 60" x 100 Laser Cutting and 60" x 120" Punching Sheet Size, Brush Table, Amada AMNC PC Controls, and Amada AASR 510M Automation Tower, s/n 43012034.

MUST SEE



1994 Amada Model LC1212Alpha CNC Laser Cutting Machine, CO2, 1.5 KW Laser Capacity, w/ Fanuc 16-L Controls, 4' x 8' Sheet Capacity, 0.5" Maximum Cutting Capacity, s/n 12120057.

MUST SEE



Amada-Virtek LPS-1E Laser Scanning Inspection System, s/n 11027917.

AMADA CNC FORMING DEPARTMENT



2011 Amada HDS-1303NT 126.8" x 1143 Ton Servo-Hydraulic Press Brake, Multi Axis AMNC-PC Controls, 87" Distance Between Frames, s/n 13304265.



2000 Amada FDB-1253NT, 118.1" x 137 Ton CNC Hydraulic Up-acting Press Brake, Multi Axis Amada AMNC/PC Controls, s/n 12530259



2011 Amada HDS-8025NT 102.4" x 88 Ton Servo-Hydraulic Press Brake, w/ AMNC-PC 5 Axis Control, s/n 82504216.



2001 Amada FDB-1030NT, 118.1" x 110 Ton CNC Hydraulic Press Brake, 7 Axis Amada AMNC/PC Controls, s/n 10300119.



2011 Amada HDS-8025NT 102.4" x 88 Ton Servo-Hydraulic Press Brake, w/ AMNC-PC 5 Axis Control, s/n 82504198.

VERY LARGE Quantity of Quality Amada Forming Dies and Amada Turret Punching Punches and Dies with Lista Cabinets.



WELDING & HAEGER INSERTION PRESSES



"9" MILLER DYNASTY 300
9 Miller Dynasty 300, 300 Amp Industrial AC/DC Tig and Stick Welders.



LARGE SELECTION
Miller Millermatic 210, 140, and 250X Mig Welders.



150 KVA AND 50 KVA
Janda 150 KVA and Janda 50 KVA Spot Welders with iii CNC Controls.



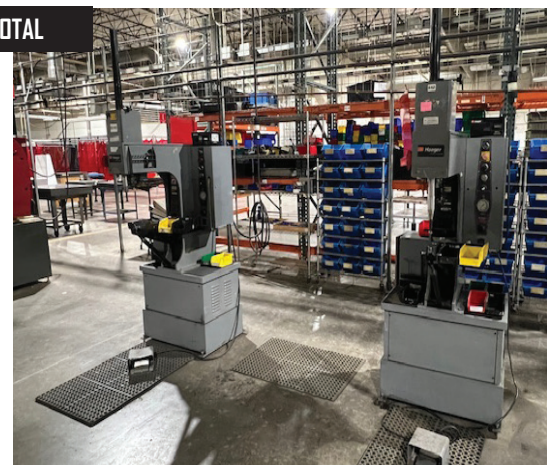
4 TOTAL LIKE NEW
4) Camfil Zephyr 3 Mobile Industrial Dust Collector for Dust and Fumes.



2013
2013 Haeger 824WT-4H, 8-ton Hydraulic Hardware Insertion Press w/ Bowl Feed, 24" Throat Depth, Window Touch 4e Controls.



10 TOTAL
2 of 10) Haeger HP6-C, 6 Ton Hydraulic Hardware Insertion Press w/ Bowl Feed.



2 of 10) Haeger HP6-C, 6 Ton Hydraulic Hardware Insertion Press w/ Bowl Feed.

SHEET METAL MANUFACTURING EQUIPMENT



Lodge & Shipley Model 0208 8' x 10 GA Power Shear, Sq Arm, Front Operated Power Back Gage.



Wysong 52" Power Mechanical Shear w/ Squaring Arm and Foot Pedal.



Timesaver 137-2 HD CMW 37" Dual Head Wet Wide Belt Sander w/ Controls and Filtration System, s/n 22561.



Dorringer D350, 14" Cold Saw w/ Pneumatic Clamping.



Di Acro M 1835 K Prene Rolling & Curving Machine, s/n GK 1123.



New Holland K-24 Spin Dryer and Vibratory Polishing Machine Model FCV 150ULE-2.



Amada Togu III Tool Grinder.



2023 IPG Photonics LightWeld 1500XR Fiber Laser Welder w/ Multi Function Auto Tig Wire Feeder.

POWDER COATING DEPARTMENT

MUST SEE



Nordson Powder Coating System.

MUST SEE



Nordson Electrostatic Powder Coating Booth Model Horizon 400 w/ Manual Guns and Controls.



5 STAGE WASH LINE



GFC General Fabrication Corporation 5 Stage Stainless Steel Wash Line For Powder Coating.

MUST SEE



GFC Infrared Powder Coating Ove

POWDER COATING BATCH SYSTEMS

MUST SEE



Powder Coating / Wet Coating Paint System with ConveyORIZED Processing.

MUST SEE



Powder Coating Batch System Spray Booth with Guns.

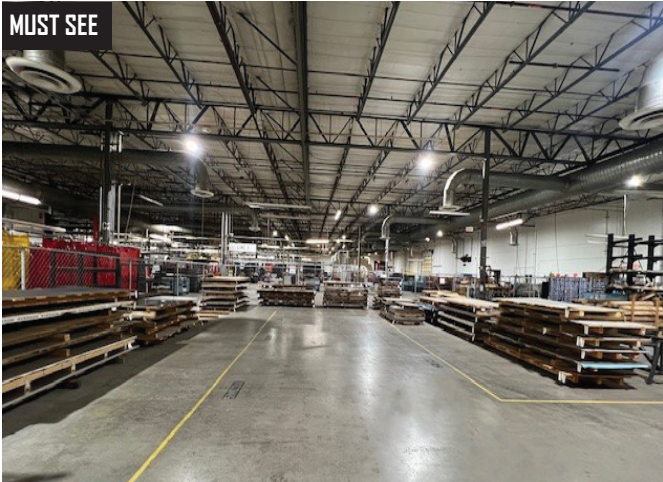
1 OF 2



1 of 2) Precision Quincy Corp Walk-in Oven, Gas-Fired, 450f Max Temperature.

LARGE MATERIAL DEPARTMENT

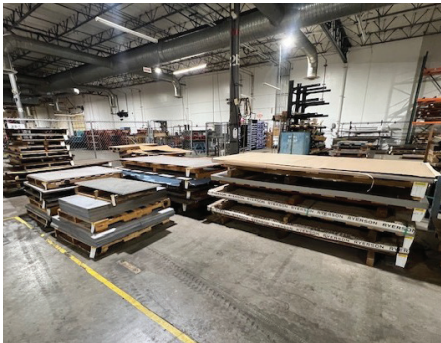
MUST SEE



MUST SEE



VERY LARGE Quantity of NEW Sheet Metal Materials, Consisting of Stainless Steel, Aluminum, and Cold Steel.



VERY LARGE Quantity of NEW Sheet Metal Materials, Consisting of Stainless Steel, Aluminum, and Cold Steel.

PCB INSPECTION SYSTEM & MACHINING



Yestech F1 AOI Automatic PCB Inspection System.



TRI TR7500 High Performance Automated Optical Inspection System for PCB.



TRI TR7006 High Speed PC Board Inspection Solder Paste Inspection System



Vectron Parametrik 6 AOI Automated Optical Inspection System for PCB



Acer Vertical Mill w/ Variable Speed, DRO and Power Feed & Bridgeport CNC Ez Trak Milling Machine.

MUST SEE

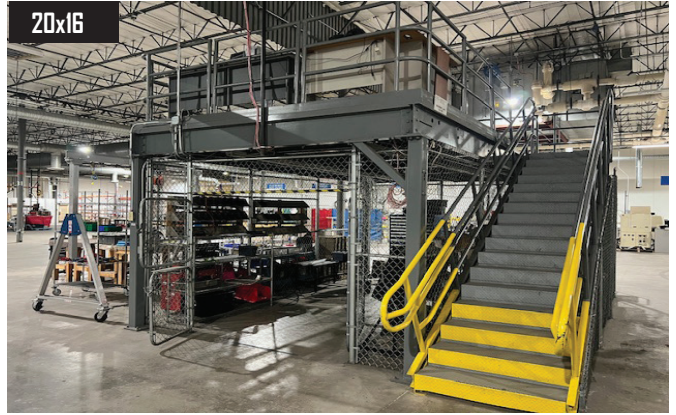


Kent Hydraulic Surface Grinder, Automatic, Controls and Filtration System.

PUBLIC AUCTION



Mezzanine 20' x 16' with Stairs, Lights and Power.



Mezzanine 20' x 16' with Stairs, Lights and Power.



Chevy T7500 Box Truck with Lift Gate (NO TITLE)



Toyota 5000 LB LPG Forklift, 2 Stage w/ Hard Pneumatic Tires.

MUST SEE



2) Hyster N40XMR2 4000 Lb Electric Stand Up Forklift with Chargers.



BID ON BIDSPOTTER.COM

TERMS OF SALE: CASH OR CASHIER'S CHECK ONLY. 18% BUYERS PREMIUM ON ALL PURCHASES \$200.00 REFUNDABLE CASH DEPOSIT. 25% CASH DEPOSIT TOWARDS ALL PURCHASES. ALL SALES ARE SUBJECT TO ARIZONA SALES TAX. THERE WILL BE NO EXCEPTIONS.

BID LIVE OR VIA WEBCAST

BidSpotter.com

TERMS AND CONDITIONS
ALL ITEMS ARE SOLD AS-IS / WHERE - IS NO GUARANTEES, OR WARRANTIES ARE APPLIED
ALL ITEMS MUST BE PICKED UP BY SPECIFIED DATE



PARTIAL & ABBREVIATED TERMS AND CONDITIONS OF AUCTION

ALL TERMS AND CONDITIONS BEHIND THE BIDDERS CARD SUPPLIED WILL APPLY TO ALL AUCTION SALE ITEMS AND FOR ALL PRIVATE NEGOTIATIONS. BY PARTICIPATING AND BIDDING AT AUCTION YOU ARE LEGALLY BINDING A CONTRACT WITH THE AUCTION COMPANY.

ALL INVOICES MUST BE PAID WITHIN 24 HOURS FROM AUCTION DATE. IT IS PROHIBITED TO BID ON ANY ITEM THAT CANNOT BE PAID IN FULL WITHIN 24 HOURS FROM AUCTION DATE. PAYMENTS MUST BE CASHIERS CHECK, WIRE TRANSFER, OR LETTER OF GUARANTEE FROM BANK.

ALL ITEMS MUST BE REMOVED BY JUNE 23, 2026 3:00 PM (PST)

NO LOADING OR PICK UP ON SATURDAY AND SUNDAY.

NO LOADING BY AUCTIONEER OR SELLER.

BUYERS PREMIUM 18% FOR ALL ONLINE BIDDING ON BIDSPOTTER.COM.

AUCTIONEER IS NOT RESPONSIBLE FOR MIS IDENTIFICATION OF ANY EQUIPMENT OR ASSETS BEING SOLD AT AUCTION EITHER BY VERBAL OR WRITTEN. IT IS THE BUYER'S RESPONSIBILITY TO INSPECT THE GOODS AND ASCERTAIN IF THE SPECIFICATIONS, DESCRIPTIONS AND CONDITION OF THE GOODS CONFORM TO THE BUYER'S REQUIREMENT INCLUDING SERIAL NUMBERS.

BUYER ACKNOWLEDGES THAT THE EQUIPMENT OR ITEMS PURCHASED ONCE MAY HAVE CONTAINED, EXPOSED TO, AND OR UTILIZED HAZARDOUS MATERIAL. THERE MAY BE SURFACES ON ITEMS WHERE DECONTAMINATION CANNOT BE VALIDATED: AS SUCH, THE BUYER OR BIDDER ACKNOWLEDGING THAT THEY ARE ACCEPTING THIS EQUIPMENT OR ITEMS IN AN "AS IS" CONDITION.

BUYER AND THEIR ASSOCIATES WILL HOLD AUCTIONEER AND "THE SELLER" HARMLESS AGAINST ANY AND ALL CLAIMS AND ACTIONS ARISING OUT OF THE PARTICIPATION OF THE INDEMNITEE IN THE ACTIVITY, INCLUDING, WITHOUT LIMITATION, EXPENSES, JUDGEMENTS, FINES, SETTLEMENTS AND OTHER AMOUNTS INCURRED IN CONNECTION WITH ANY LIABILITY, SUIT, ACTION, LOSS, OR DAMAGE ARISING OR RESULTING FROM THE INDEMNITEE'S PARTICIPATION IN THE AUCTION. ALL BIDDERS MUST ONLY USE APPROVED MACHINERY MOVERS BY SELLER WITH LIABILITY INSURANCE OF \$2,000,000 OR HIGHER. NO ITEMS SHALL BE REMOVED UNLESS PAID IN FULL AND ALL ITEMS SHALL BE REMOVED IN THE TIME ALLOCATED BY THE AUCTIONEER.

ALL SALES ARE FINAL, AND ALL ITEMS ARE SOLD AS IS WHERE IS, WITH ALL FAULTS AND DEFECTS.

THERE ARE NO GUARANTEE OR WARRANTY TO ANY ITEMS SOLD (RE: MAKE, MODEL, YEAR, HOURS, MILES, OR MERCHANTABILITY BY AUCTIONEER OR SELLER).

BUYERS RESPONSIBILITY TO INSURE PROPER USE FOR SAFETY.

ALL ITEMS ARE SOLD AS "PARTS ONLY"

BUYER ACKNOWLEDGES THAT THE GOODS ARE PRE-OWNED AND GOODS WERE NEITHER DESIGNED NOR MANUFACTURED BY SELLER. SELLER HAS NO KNOWLEDGE OF OR CONTROL OVER THE PRIOR USE OR MISUSE OF THE GOODS OR ANY MODIFICATIONS TO THE GOODS FOLLOWING ORIGINAL MANUFACTURE. NEITHER DOES SELLER HAVE KNOWLEDGE OR CONTROL OVER THE APPLICATION OF THE GOODS BY BUYER. IT IS THE BUYER'S SOLE RESPONSIBILITY TO PROVIDE PROPER SAFETY DEVICES, EQUIPMENT AND INSTRUCTIONS FOR ANY PARTICULAR USE OR TAKE NECESSARY STEPS TO CONFORM THE GOODS AND OPERATION THEREOF TO ALL FEDERAL, STATE OR LOCAL GOVERNMENT SAFETY STANDARDS AND LAWS INCLUDING WITHOUT LIMITATION THE OCCUPATIONAL SAFETY AND HEALTH ACT OF "OSHA". ANNOUNCEMENTS MADE BY THE AUCTIONEER ON THE DAY OF THE AUCTION TAKE PRECEDENCE OVER ANY PREVIOUS PRINTED MATERIAL PERTAINING TO THIS AUCTION. AUCTIONEER RESERVES THE RIGHT TO REMOVE OR ADD TO ANY AUCTION ITEMS ON THE LIST UNTIL AUCTION TIME.



LIVE WEBCAST ONLINE ONLY NO ONSITE BIDDING
JUNE 3RD & 4TH, 2026 ~ 2 DAY AUCTION

