

TRUCKS - FABRICATION EQUIPMENT
SHOP EQUIPMENT & MORE



Cobalt Industries Ltd. provided custom welding and fabrication support for the food, grain, meat, and oil and gas industries in Manitoba since 2007. Bid now on a vast lineup of trucks, telehandlers, Spydercranes, fabrication equipment & more

Scheduled Viewing:

view sale online

April 8, 2024 from 8:30 AM to 5:00 PM

April 9, 2024 from 8:30 AM to 5:00 PM

at
www.mcdougallauction.com April 10, 2024 from 8:30 AM to 5:00 PM



UNRESERVED

Lot 276: 2014 Unic Spydercrane
URW295CR1U Mini Crane

Hours (Showing Unverified): 720.4 Hours
Tracks
Capacity: 6,450lbs



Starting Bid : \$100
Bidding Increments: \$100



UNRESERVED

Lot 284: 2007 JLG Skytrak 8042
Telehandler

Model: 8042
Engine: Cummins Diesel
Hours (Showing Unverified): 7,121 Hours
Enclosed Cab



Starting Bid : \$100
Bidding Increments: \$100



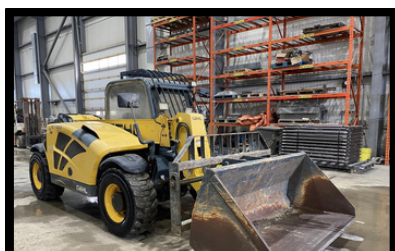
UNRESERVED

Lot 284: 2013 Skyjack SJ111-3219
Scissor Lift

Hours (Showing Unverified): 207.7 Hours
Tires: 20.0x8
Max Height: 19'
Basket Capacity: 550lb



Starting Bid : \$100
Bidding Increments: \$100



UNRESERVED

Lot 283: 2008 Gehl RS5-19 Low Profile
Telehandler

Engine/HP: Yanmar 3.3L 16-Valve 64HP
Hours (Showing Unverified): 3,165.7 Hours
Enclosed Cab
5,500lb Capacity



Starting Bid : \$100
Bidding Increments: \$100



Fabrication Equipment

**OVER 100,000
REGISTERED
BIDDERS!**



UNRESERVED

Lot 300: 2019 Durma SBT 3006 CNC Hydraulic Shear

7,300kg
Powers On
Emergency Stop Button Broken
Buyer Responsible for Disconnect and Removal



Starting Bid : \$25
Bidding Increments: \$25



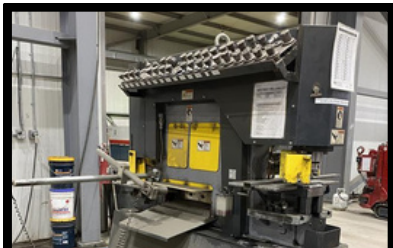
UNRESERVED

Lot 301: 2018 Messer Metal Master Evolution CNC Plasma Cutter

Powers On
114" Wide
320" long
Hypertherm Hyperformance
Plasma Automatic Gas Console
Buyer Responsible for Disconnect and Removal



Starting Bid : \$25
Bidding Increments: \$25



UNRESERVED

Lot 302: 2018 Marvel MSIW93D Iron Worker

Working Condition
Buyer Responsible for Disconnect and Removal



Starting Bid : \$25
Bidding Increments: \$25



UNRESERVED

Lot 303: 2017 Durma AD-R 43220 Hydraulic Press Brake

4300mmx 220 Ton
265mm Stroke
Delom DA-58t Controls
Powers On
Buyer Responsible for Disconnect and Removal



Starting Bid : \$25
Bidding Increments: \$25



UNRESERVED

Lot 305: 2007 Ficpep 1001 DZB CNC Beam Drill Line Including Ficpep Band Saw & Conveyers

Approx. 100' Bed Length
Infeed and Outfeed Conveyers
Buyer Responsible for Disconnect and Removal



Starting Bid : \$25
Bidding Increments: \$25



Used Trucks



UNRESERVED

Lot 61: 2018 Dodge Ram 2500 SLT Outdoorsman Truck

Mileage (Showing Unverified): 190,528km
Engine: 6.7 Cummins Diesel
GVWR: 10,000lb
Dents and Scratches
Coolant Light On



Starting Bid : \$100
Bidding Increments: \$100



UNRESERVED

Lot 62: 2018 Dodge Ram 2500 ST Crew Cab Truck

Mileage (Showing Unverified): 220,212 km
Engine: 6.7L Cumming Diesel
GVWR: 10,000 lb
Tailgate Dented



Starting Bid : \$100
Bidding Increments: \$100



UNRESERVED

Lot 63: 2018 Dodge Ram 3500 Crew Cab Truck

Mileage (Showing Unverified): 276,199 km
Engine: 6.7L Cummins Diesel
(4) Box Toolboxes
GVWR: 12,300 Lb



Starting Bid : \$100
Bidding Increments: \$100



UNRESERVED

Lot 64: 2016 Dodge Ram 2500 Crew Cab Truck

Mileage (Showing Unverified): 347,467 km
Engine: 6.7L Cummins Diesel
(4) Toolboxes
GVWR: 10,000 lb



Starting Bid : \$100
Bidding Increments: \$100



UNRESERVED

Lot 65: 2016 Dodge Ram 3500 SLT Crew Cab Truck

Engine/HP: 6.7L Cummins Diesel
Mileage (Showing Unverified): 176,657 km
Transmission: Auto



Starting Bid : \$100
Bidding Increments: \$100



UNRESERVED

Lot 401: 2021 Southland Royal Cargo 18' T/A V-Nose Trailer

Dimensions: 16' x 2' V-Nose
Axle Capacity: 3,500 lbs (x2)
Hitch Type: 2 5/16" Ball
Side Access Door
GVWR: 7,815lbs



Starting Bid : \$100
Bidding Increments: \$100



UNRESERVED

Lot 403: 2016 Load Trail T/A 22' Tilt Flat Deck Trailer

Dimensions: 101" W x 22' L
Axle Capacity: 7,000 lbs (x2)
Tires: 235/80R16
Hitch Type: 2 5/16" Ball
Tilt Deck
GVWR: 14,000 lbs



Starting Bid : \$100
Bidding Increments: \$100



UNRESERVED

Lot 406: 2015 Load Trail T/A 22' Flat Deck Trailer

Dimensions: 101" (W) x 22' (L)
Axle Capacity: 7,000 lbs (x2)
Tires: 235/80R16
Hitch Type: 2 5/36" Ball
GVWR: 14,000 lbs



Starting Bid : \$100
Bidding Increments: \$100



UNRESERVED

Lot 407: 2015 Trailtech T/A 20' Flat Deck Trailer

Dimensions: W102" x L20' w/ a 5' Beaver Tail
Axle Cap: 1,000 Lbs (x2)
Tires: 235/80R16
Hitch Type: Pintle
GVWR: 2,3000 lbs



Starting Bid : \$100
Bidding Increments: \$100

For More Information Regarding This Sale, Please Call Mike Y at (204) 997-8572.

Book Your Sale Today!

**mc MCDUGALL
AUCTIONEERS**

1-800-263-4193

mcdougallauction.com

5221 Portage Ave. Headingley, MB R4H 1E1

