

2-DAY

ONLINE AUCTION

INSPECT ONSITE AND BID ONLINE

For Upcoming Machinery
Liquidations and Auctions:
www.flsales.com or
www.stevensmachinery.com

THE FORMER WORLD HEADQUARTERS OF A FORTUNE 500 COMPANY

ONLINE BIDDING CLOSES: Tuesday, May 23rd and Wednesday, 24th, 2023
Lots begin to close at 10:00 AM EDT each day
ONSITE INSPECTION: Monday, May 22nd from 9:00 AM to 3:00 PM EDT
EQUIPMENT LOCATION: 1950 Richmond Road, Lyndhurst, Ohio

BID NOW

Building to be demolished! All items must go, Over 500,000 s.f. of building components



Major items include: Numerous Smith hot water heaters, Vidmar type cabinets, building electrical, transformers, switchgear, disconnects, electrical distribution centers, variable frequency drives, (2) Caterpillar 625kva standby generators, fuel tanks, AC and heat exchanger equipment, complete maintenance department, Trane climate changers, Cleaver Brooks mdl 4 M4S-4000 watertube boiler, Cleaver Brooks SM-7 Spraymaster deaerator, (2) Aquaplex 750I Turbopower gas water heaters, Cleaver Brooks CB-700-250 CB packaged boiler, Sellers 15 Commodore c-100-2 boiler, 2017 York YKEETQ6 MaxE centrifugal chiller, (2) York Chillers, ELGi en11-120 compressor sequencer, air compressors & air dryer, conference & office furniture, commercial kitchen equipment, tools, decorative doors and windows, art works, chandeliers, potted plants, exercise equipment, lockers and lots more



FL Sales Inc.
Equipment, Appraisals, Liquidations, Auctions

30505 Bainbridge Road, Suite 210, Solon, Ohio 44139
Phone: (440) 498-8484 Email: jgreene@flsales.com

In Conjunction
With:

Lee Stevens
Machinery, Inc.

48985 Wixom Tech Drive, Wixom, Mi. 48393
Phone: 248-926-8400 Email: randy@stevensmachinery.com

AIR CONDITIONING AND CHILLERS

2017 YORK MAXE CENTRIFUGAL CHILLER MODEL YKEEETQ6-ENG S/N SEEM-808540, 235 REFRIG. PSIG, 150 LIQUID PSIG., 3 PASSES, BAFFLE CONDENSER GAS INLET, R-134A REFRIGERANT, COMPRESSOR MODEL YDHF-491VDD, 2 HP OIL PUMP, ABB CHILL WATER PUMP CONTROLS

(2) YORK MODEL CHILLERS, GENERAL ELECTRIC CONTROLS

OVER 16 TRANE DRAW-THRU CLIMATE CHANGERS
RELATED PUMPS AND MOTORS



2017



TEMPERATURE CONTROL

LIEBERT SYSTEM 3 TEMPERATURE
CONTROL SYSTEM



VIEW COMPLETE
CATALOG, REGISTER
& BID NOW!

BidSpotter

BOILERS AND PUMPS

SELLERS MODEL 15 COMMODORE C-100-W BOILER S/N 99137 RATED AT 100 PSI., ASME # 8657, NAT BOARD # 6737, 4,185,000 BTU/HR, NATURAL GAS FIRED, 18# FUEL PRESSURE, 3,350,000 OUTPUT BTU/HR, 5 HP 460 VOLT, UL RATED

1983 CLEAVER BROOKS MODEL 4 WATERTUBE BOILER MODEL M4S-4000 SERIES 700MG, S/N G-15352-M4, 15 PSI, 4,000,000 BTU/HOUR, 4000 CFH, 170 SQ. FT. AREA, UL RATED WITH 1986 CLEAVER BROOKS SPRAYMATER DEAERATOR MODEL SM-7, S/N DG-4975, 7,000 GALLON CAPACITY

(2) 1983 CLEAVER BROOKS MODEL CB-700—250 CB PACKAGED BOILERS S/N L-77154 AND L-77155 RATED AT 125 H/W PSI, 10,461,000 BTU/HR, NATURAL GAS, 480 VOLT 3 PH, UL RATED

(2) 60 HP CHILL WATER PUMPS AND MOTORS WITH ABB ACH400 CONTROLS AND TRANAFROMERS

(3) 40 HP CONDITIONED WATER PUMPS AND MOTORS

(2) 20 HP HTG WATER PUMPS AND MOTORS

15HP CHILL WATER PUMP AND MOTOR

(2) 15 HP STORM WATER PUMPS AND MOTORS

(2) 5 HP SANITARY PUMPS AND MOTORS

RELATED PUMP AND MOTORS, AND MISC. ITEMS



HOT WATER HEATERS

(2) AQUAPLEX MODEL 750L-215-TP 215 GALLON HOT WATER HEATERS
S/N 1014138736, 600,000 BTU INPUT, 176 KW, RATED AT 750 GPH, 120 VOLT
1 PHASE AND MODEL 750N-225A-TP S/N 019790169 225 GALLON CAPACITY

(16) AC SMITH HOT WATER HEATERS



STANDBY GENERATORS

CATERPILLAR MODEL 3412 520 KW STANDBY GENERATOR WITH MODEL SR4 GENERATOR, 1800 RPM, 60 HERTZ, FRAME
588 S/N 5N5078, 3 PHASE, 10 WIRE, 650 KVA, 520 KW, .8 PF, 240/480 VOLTS, CATERPILLAR 3400 DIESEL ENGINE, AIR
COOLED, SKID MOUNT, CUMMINS POWERCOMMAND TRANSFER SWITCH, BATTERY

CATERPILLAR MODEL 3412 520 KW STANDBY GENERATOR WITH MODEL SR4 GENERATOR, 1800 RPM, 60 HERTZ, FRAME
588 S/N 5N507, 3 PHASE, 10 WIRE, 650 KVA, 520 KW, .8 PF, 240/480 VOLTS, CATERPILLAR 3400 DIESEL ENGINE, AIR
COOLED, SKID MOUNT, RUSSELECTRIC MODEL 2000 TRANSFER SWITCH, BATTERY

(2) DIESEL FUEL TANKS



AIR COMPRESSORS

QUINCY 10 HP TWO STAGE TANK MOUNTED AIR COMPRESSOR S/FF370-347493-01 WITH HANKINSON AIR DRYER MODEL HPR50 RATED AT 50CFM S/N H050A1151207035, 2015 ELGI MODEL EN11-120 SEQUENCER S/N MOKC370643



VARIABLE FREQUENCY DRIVES

(6) ABB VARIOUS MODEL VARIABLE FREQUENCY DRIVES FOR AIR HANDLERS



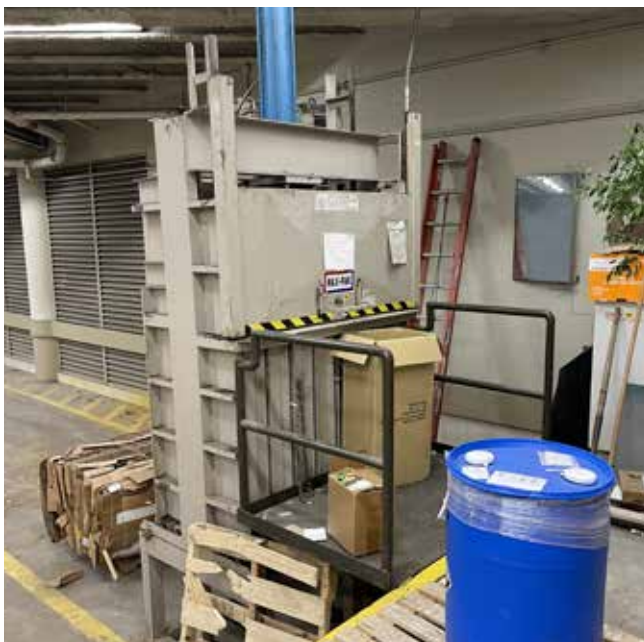
BUILDING ELECTRICAL

INCOMING POWER SWITCHGEAR, LARGE QUANTITY OF ELECTRICAL DISCONNECTS, BREAKERS



BALER

MAX-PAK PAPER BALER WITH HYDRAULIC SYSTEM



FURNITURE AND FIXTURES

EXECUTIVE OFFICE FURNITURE

KITCHENETTES

100'S OF MODULAR OFFICES PARTITIONS, DESKS, FILES, CHAIRS, ETC.

100'S OF FILE CABINETS

100'S OF OFFICES WITH DESKS, CHAIRS, ETC

LOT'S OF CONFERENCE TABLES UP TO 14' X 26'

LOTS OF MISC. FILES, CABINETS, SHELVING, BOOKCASES, ETC



RESTAURANT EQUIPMENT (ALL STAINLESS STEEL)

3' X 10' SILVERWARE TABLE

(2) 3' X 7' CASHIER TABLES

3' X 12' FOOD SERVING TABLE

14' TRAY AND SILVERWARE SERVING COUNTER

16' FOOD SERVING COUNTER WITH 2- PLATE STATIONS AND
(2) WARMING STATIONS

20' FOOD SERVING COUNTER WITH DELFIELD FOOD DISPLAY
SERVER

100" TRAUlsen SIDE BY SIDE 3 DOOR REFRIGERATOR 28" DEEP

(2) 68" TRAUlsen SIDE BY SIDE 2 DOOR REFRIGERATOR 28"
DEEP

40' WORK AND SERVING COUNTER WITH 2 DOOR CABINETS, 18"
X 46" GRIDDLE, 2- FRYERS, SINKS

(8) STATION WARMING OVEN

40' WORK AND SERVING COUNTER WITH 8- PLATE SERVERS,
(13) WARMING STATIONS, FRONT AND TOP GLASS GUARD

TWIN AMERICAN COFFER AND HOT WATER BREWER AND STAND

(2) 13' PREP COUNTERS WITH SINK AND CABINETS (NO SHELF)

(2) ISE MODEL SS300 DISPOSALS

SOUTHBEND 6 BURNER STOVE, OVEN WITH TOP BROILER

13' PREP COUNTER WITH SINK AND HOT WATER BATH

SERVING STATION WITH SINK, (3) WARMERS, AND CONDIMENT
STATION

TRAULSEN 2 DOOR REFRIGERATOR TOP AND BOTTOM

GAYLORD VENT SYSTEM WITH HOODS

DISH WASHING STATION WITH COUNTER TOPS, (3) SINKS,
HOBART 24" X 30" WASH STATION WITH ECOLAB TIMER



2-DAY

ONLINE AUCTION

INSPECT ONSITE AND BID ONLINE

THE FORMER WORLD HEADQUARTERS OF A FORTUNE 500 COMPANY

**BUILDING TO BE DEMOLISHED
ALL ITEMS MUST GO!**

MAJOR ITEMS INCLUDE: NUMEROUS SMITH HOT WATER HEATERS, BUILDING ELECTRICAL, TRANSFORMERS, SWITCHGEAR, DISCONNECTS, ELECTRICAL DISTRIBUTION CENTERS, VARIABLE FREQUENCY DRIVES, GENERATORS WITH TRANSFER SWITCHES, FUEL TANKS, MODULAR OFFICE FURNITURE AND LOTS MORE.

ONLINE BIDDING CLOSES:

Tuesday, May 23rd and
Wednesday, 24th, 2023
Lots begin to close at
10:00 AM EDT each day

ONSITE INSPECTION:

Monday, May 22nd from
9:00 AM to 3:00 PM EDT

EQUIPMENT LOCATION:

1950 Richmond Road,
Lyndhurst, Ohio

TERMS OF PAYMENT:

Please contact an FLSales representative
for complete Terms and Conditions.

REMOVAL:

Rigging/Removal of sold equipment is the sole responsibility of the buyer. Rigging/Removal may not begin until payment has been made in full. All heavy rigging requiring the use of forklifts, cranes, etc whether performed by the customer or a rigging company, must present a certificate of insurance for \$1,000,000 prior to any removal being done onsite. Removal starts TBD

SHIPPING INFORMATION:

Please see website for shipping information.

BUYER'S PREMIUM:

18% for all purchases.

ONLINE BIDDING PROVIDED BY:

VIEW COMPLETE
CATALOG, REGISTER
& BID NOW!

BidSpotter

In Conjunction With:

FL Sales Inc.
Equipment, Appraisals, Liquidations, Auctions

30505 Bainbridge Road, Suite 210, Solon, Ohio 44139
Phone: (440) 498-8484 Email: jgreene@flsales.com
For Upcoming Auctions and Bidding Information:

www.flsales.com

MISC. ITEMS

OVER 50 LIKE NEW 1/2 LOCKERS WITH KEYS, DECORATIVE DOORS,
OVER 300 AUDITORIUM CHAIRS, (4) PRECOR MODEL 9561 THREADMILLS,
PRECOR MODEL 9321 TREADMILL, VARIOUS OTHER EXERCISE ITEMS,
POTTED PLANTS, CHANDELIERS, TRAYS, LUNCHROOM TABLES AND
CHAIRS, COFFEE MAKERS, A/V ITEMS, AND TONS MORE



Lee Stevens
Machinery, Inc.

48985 Wixom Tech Drive, Wixom, MI. 48393
Phone: 248-926-8400 Email: randy@stevensmachinery.com
Please visit us online:

www.stevensmachinery.com